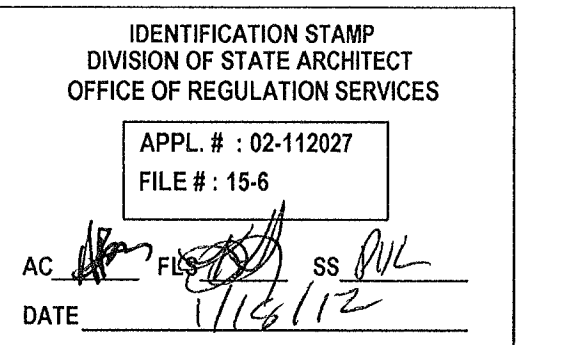




Danny J. Ordiz
DANNY J. ORDIZ, AIA
ARCHITECT C-14728
WILLIAM J. MELBY, AIA
ARCHITECT C-16,835
CONSULTANT

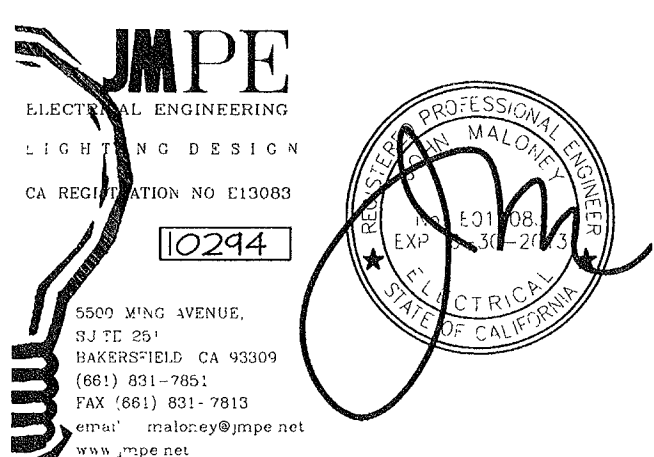


NEW ELEMENTARY SCHOOL
9801 HIGHLAND KNOLLS DR
BAKERSFIELD
CALIFORNIA
93306

NEW MIDDLE SCHOOL
4115 VINELAND ROAD
BAKERSFIELD
CALIFORNIA
93306

FOR:

BAKERSFIELD CITY SCHOOL
DISTRICT
1300 BAKER STREET
BAKERSFIELD
CALIFORNIA
93305



MARK DATE DESCRIPTION

△		
△		
△		
△		

JOB NUMBER:
20101244
CAD DRAWING FILE

DRAWN BY:
AC
CHECKED BY:
PH

CHECK AND VERIFY ALL DIMENSIONS BEFORE
PROCEEDING WITH THE WORK.
REPORT DISCREPANCIES TO THE ARCHITECT.

THE DRAWINGS, IDEAS, AND DESIGNS
REPRESENTED ON THIS SHEET ARE THE
PROPERTY OF THE ARCHITECT

COPYRIGHT
ORDIZ-MELBY ARCHITECTS, INC 2010

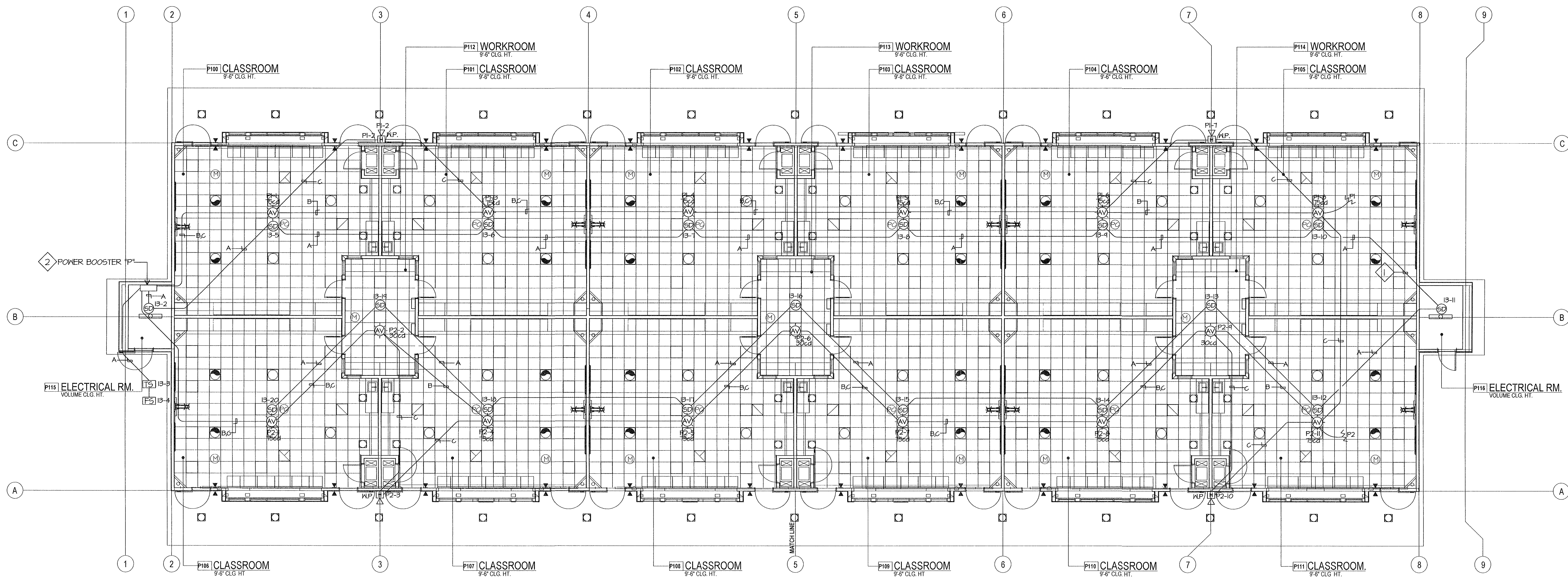
SHEET TITLE
FIRE ALARM PLAN
BUILDING P

SHEET IDENTIFICATION NUMBER

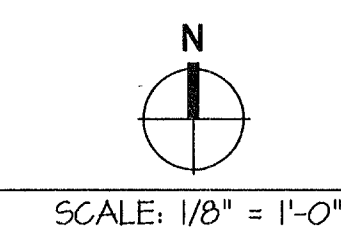
E-131P
SHEET OF

FIRE ALARM PLAN NOTES

- 1 FIRE ALARM CABLES SHOWN ARE DIAGRAMMATIC. INSTALL CABLES PARALLEL AND PERPENDICULAR TO WALLS AT HIGHEST LOCATION POSSIBLE. SUPPORT FIRE ALARM CABLE(S) EVERY 5' W/RED J-HOOKS TYPICAL. FIRE ALARM CABLE(S) AND THEIR SUPPORT(S) SHALL BE INDEPENDENT FROM COMMUNICATION CABLE SUPPORT, TYPICAL.
- 2 INSTALL POWER BOOSTER PANEL FLUSH IN NEW WALL. ALL FIRE ALARM CABLES INSTALLED IN WALLS SHALL BE IN EMT CONDUIT.



FIRE ALARM PLAN BUILDING P



CABLE LEGEND	
A	WESTPENN 975 (SLC)
B	WESTPENN 998 (STROBE)
C	WESTPENN 975 (SPEAKERS)