



Danny E. Ordiz
DANNY E. ORDIZ, AIA
ARCHITECT C-14,728
WILLIAM J. MELBY, AIA
ARCHITECT C-16,835
CONSULTANT

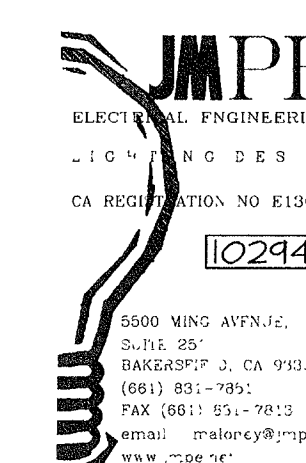
IDENTIFICATION STAMP
DIVISION OF STATE ARCHITECT
OFFICE OF REGULATION SERVICES
APPL. # : 02-112027
FILE # : 15-6
AC: [Signature] FL: [Signature] SS: [Signature]
DATE: JAN 20 2012

NEW ELEMENTARY SCHOOL
9801 HIGHLAND KNOLLS DR
BAKERSFIELD
CALIFORNIA
93306

NEW MIDDLE SCHOOL
4115 VINELAND ROAD
BAKERSFIELD
CALIFORNIA
93306

FOR:

DISTRICT
1300 BAKER STREET
BAKERSFIELD
CALIFORNIA
93305



MARK DATE DESCRIPTION

△		
△		
△		
△		

JOB NUMBER:
20101244
CAD DRAWING FILE:

DRAWN BY:
AC
CHECKED BY:
PH

CHECK AND VERIFY ALL DIMENSIONS BEFORE
PROCEEDING WITH THE WORK.
REPORT DISCREPANCIES TO THE ARCHITECT.

THE DRAWINGS, IDEAS, AND DESIGNS
REPRESENTED ON THIS SHEET ARE THE
PROPERTY OF THE ARCHITECT

COPYRIGHT
ORDIZ MELBY ARCHITECTS, INC. 2010

SHEET TITLE

FIRE ALARM PLAN
BUILDING M

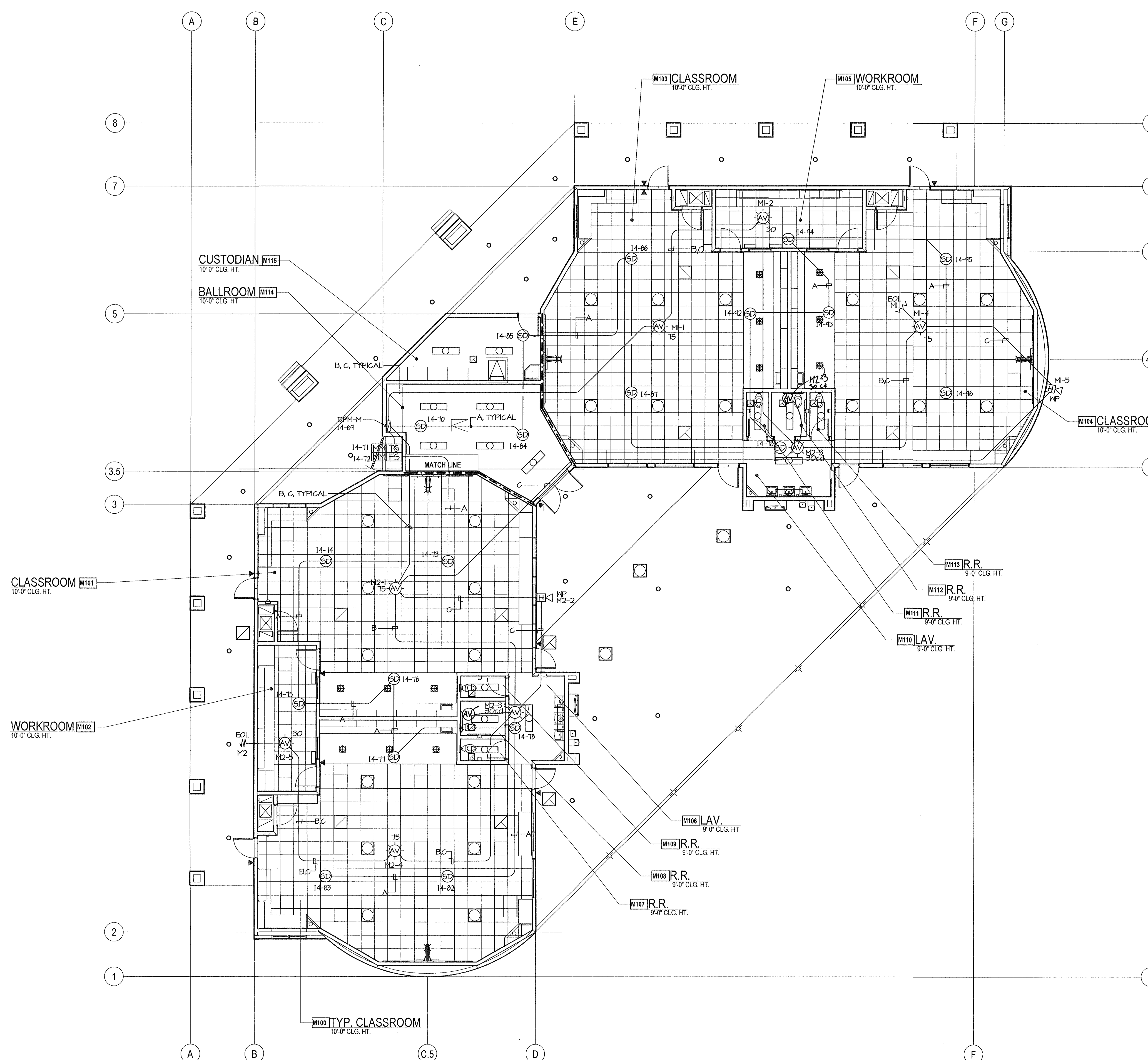
SHEET IDENTIFICATION NUMBER

E-131M
SHEET OF

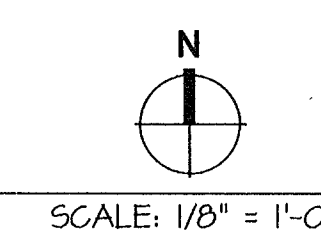
FIRE ALARM PLAN NOTES

- 1 FIRE ALARM CABLES SHOWN ARE DIAGRAMMATIC. INSTALL CABLES PARALLEL AND PERPENDICULAR TO WALLS AT HIGHEST LOCATION POSSIBLE. SUPPORT FIRE ALARM CABLE(S) EVERY 5' W/ RED J-HOOKS TYPICAL. FIRE ALARM CABLE(S) AND THEIR SUPPORT(S) SHALL BE INDEPENDENT FROM COMMUNICATION CABLE SUPPORT, TYPICAL.
- 2 INSTALL POWER BOOSTER PANEL FLUSH IN NEW WALL. ALL FIRE ALARM CABLES INSTALLED IN WALLS SHALL BE IN EMT CONDUIT.
- 3 AT WALLS ABLE TO RESIST THE PASSAGE OF SMOKE, CAULK ALL PENETRATIONS.

LINE TYPE	WALL TYPE
---	SMOKE SEPARATION



FIRE ALARM PLAN BUILDING M



CABLE LEGEND	
A	WESTPENN 975 (SLC)
B	WESTPENN 998 (STROBE)
C	WESTPENN 975 (SPEAKERS)