

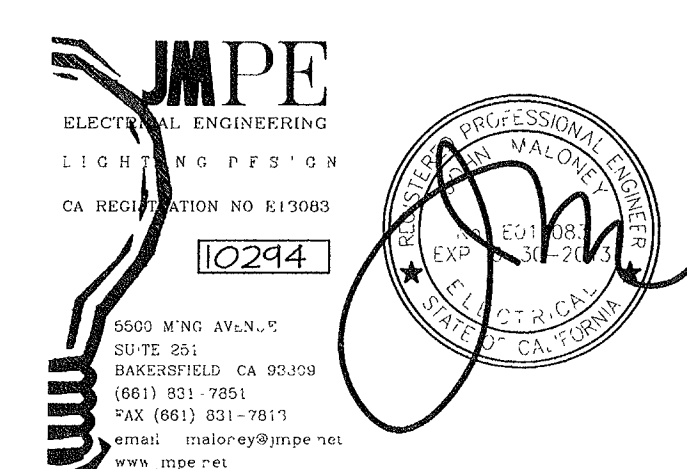
D. Ordiz
DANNY E. ORDIZ, AIA
ARCHITECT C-14728
WILLIAM J. MELBY, AIA
ARCHITECT C-16,835
CONSULTANT

IDENTIFICATION STAMP
DIVISION OF STATE ARCHITECT
OFFICE OF REGULATION SERVICES
APPL. # - 02-112027
FILE # - 15-6
DATE JAN 20 2012

NEW ELEMENTARY SCHOOL
9801 HIGHLAND KNOLLS DR
BAKERSFIELD
CALIFORNIA
93306

NEW MIDDLE SCHOOL
4115 WINELAND ROAD
BAKERSFIELD
CALIFORNIA
93306

FOR:
DISTRICT
1300 BAKER STREET
BAKERSFIELD
CALIFORNIA
93305



MARK	DATE	DESCRIPTION

JOB NUMBER:
20101244
CAD DRAWING FILE:

DRAWN BY:
AC
CHECKED BY:
PH

CHECK AND VERIFY ALL DIMENSIONS BEFORE
PROCEEDING WITH THE WORK.
REPORT DISCREPANCIES TO THE ARCHITECT.

THE DRAWINGS, IDEAS, AND DESIGNS
REPRESENTED ON THIS SHEET ARE THE
PROPERTY OF THE ARCHITECT.

COPYRIGHT
ORDIZ-MELBY ARCHITECTS, INC. 2010
SHEET TITLE
**ELECTRICAL MECHANICAL
PLAN BUILDING M**

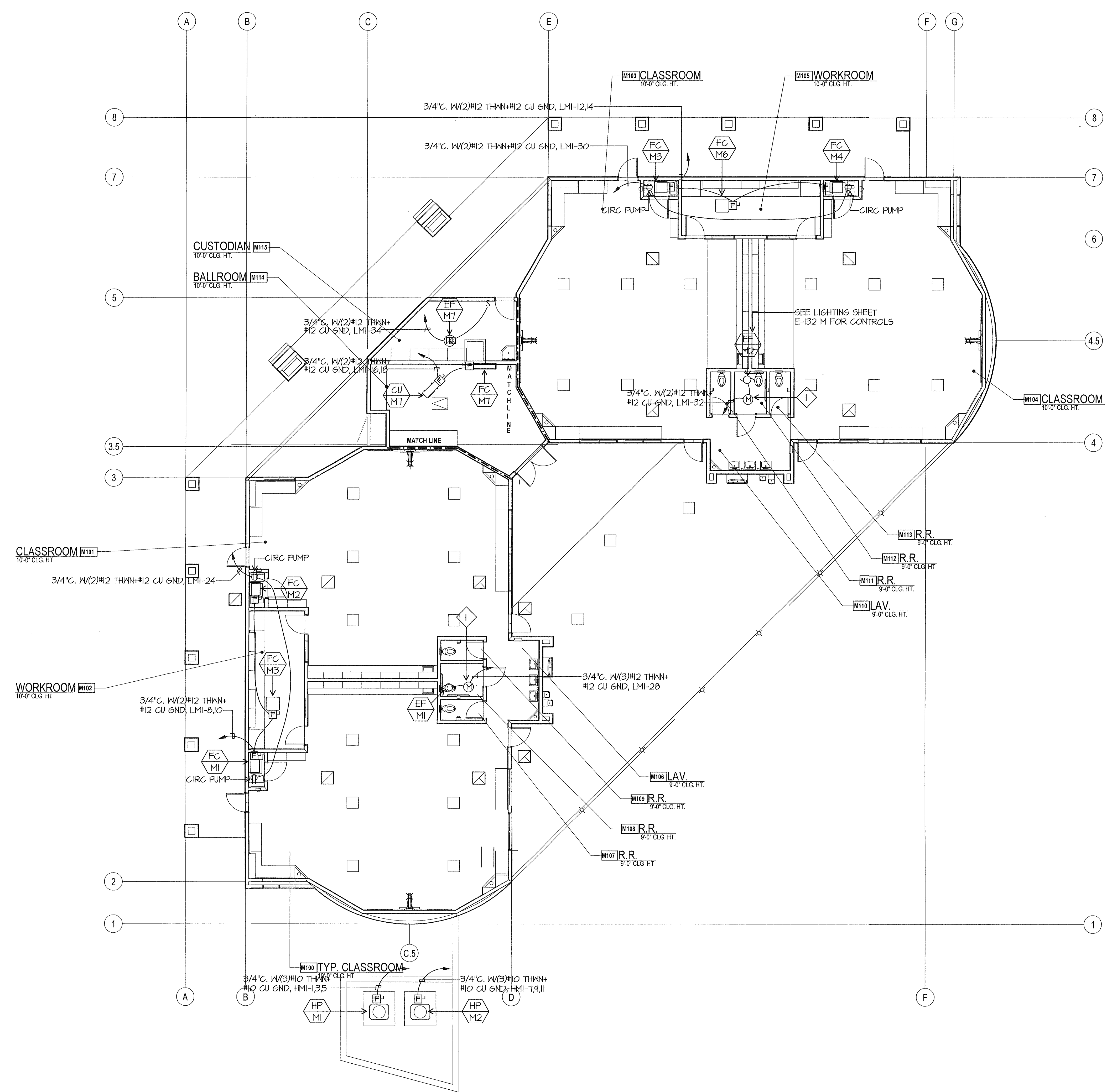
SHEET IDENTIFICATION NUMBER

E-122M
SHEET OF

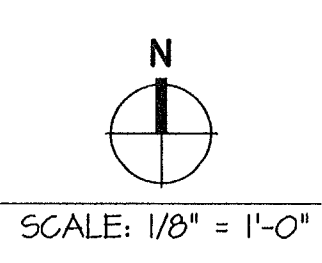
ELECTRICAL PLAN NOTES

- 1 PROVIDE SENSOR SWITCH MOTION SENSOR, CMR-PDT-9. CONNECT TO EXHAUST FAN THAT SERVES AREA.
- 2 AT WALLS ABLE TO RESIST THE PASSAGE OF SMOKE, CAULK ALL PENETRATIONS.

LINE TYPE	WALL TYPE
---	SMOKE SEPARATION



ELECTRICAL MECHANICAL PLAN BUILDING M



J:\MFE\JDBR\02R\DATE\12-21-11 AC