

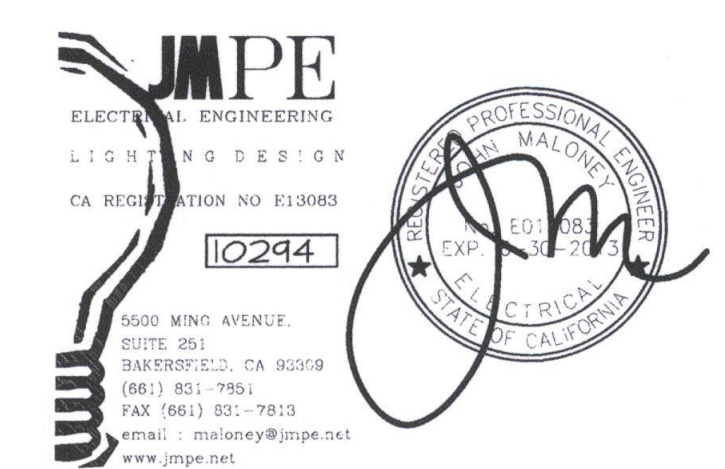


William J. Melby
DANNY E. ORDIZ, AIA
ARCHITECT C-14,728
WILLIAM J. MELBY, AIA
ARCHITECT C-16,835
CONSULTANT

IDENTIFICATION STAMP
DIVISION OF STATE ARCHITECT
OFFICE OF REGULATION SERVICES
APPL. # 02-112027
FILE # 15-6
AC [Signature] SS [Signature]
DATE JAN 20 2012

NEW ELEMENTARY SCHOOL
9801 HIGHLAND KNOLLS DR
BAKERSFIELD
CALIFORNIA
93306
NEW MIDDLE SCHOOL
4115 VINELAND ROAD
BAKERSFIELD
CALIFORNIA
93306

FOR:
BAKERSFIELD CITY SCHOOL
DISTRICT
1300 BAKER STREET
BAKERSFIELD
CALIFORNIA
93305



MARK DATE DESCRIPTION

| | | |
|---|--|--|
| △ | | |
| △ | | |
| △ | | |
| △ | | |

JOB NUMBER:
20101244
CAD DRAWING FILE:

DRAWN BY:
AC
CHECKED BY:
PH

CHECK AND VERIFY ALL DIMENSIONS BEFORE
PROCEEDING WITH THE WORK.
REPORT DISCREPANCIES TO THE ARCHITECT.

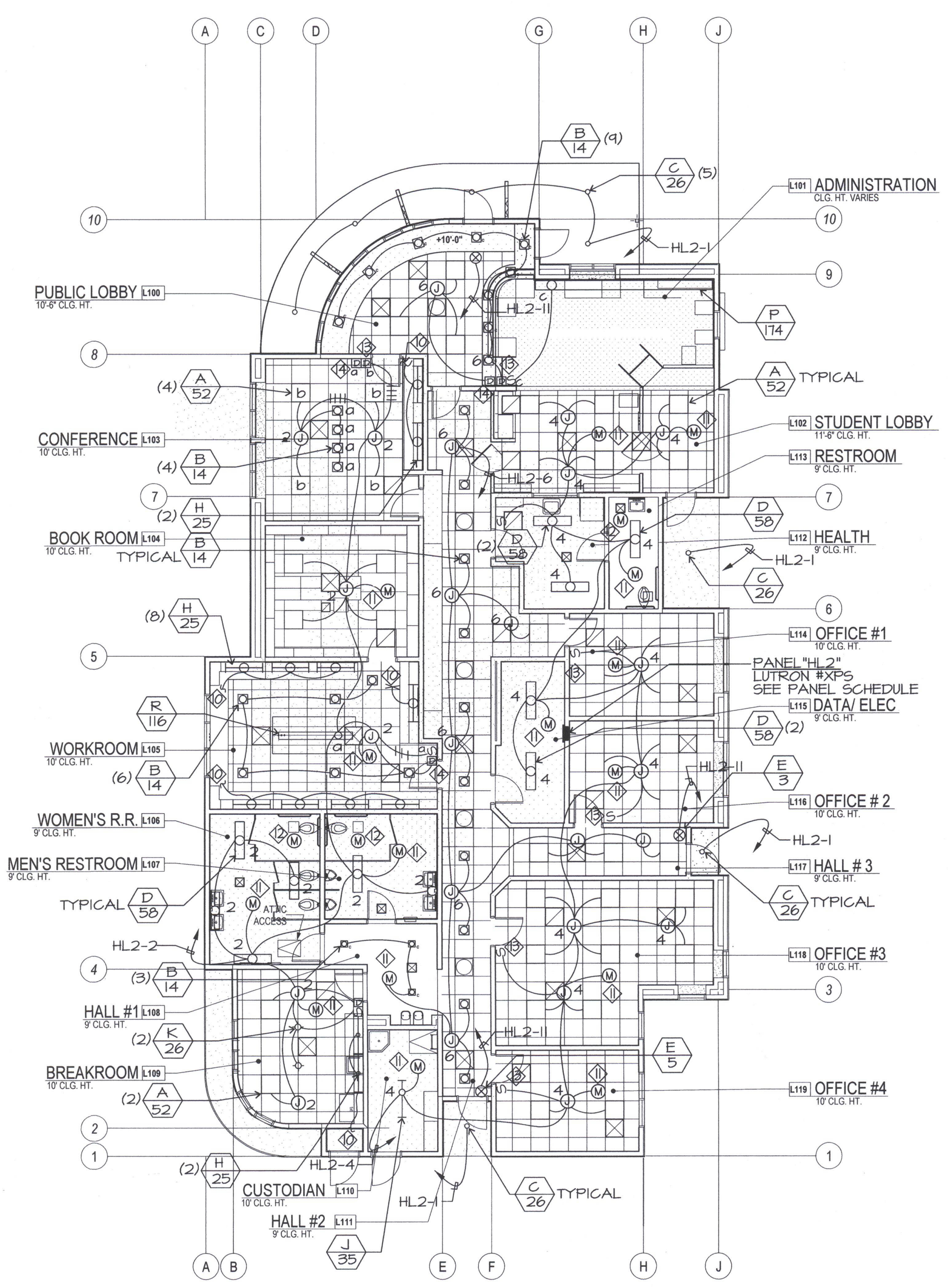
THE DRAWINGS, IDEAS, AND DESIGNS
REPRESENTED ON THIS SHEET ARE THE
PROPERTY OF THE ARCHITECT.

COPYRIGHT
ORDIZ-MELBY ARCHITECTS, INC. 2010

SHEET TITLE
LIGHTING PLAN
BUILDING L

SHEET IDENTIFICATION NUMBER

E-132L
SHEET OF



LIGHTING PLAN NOTES

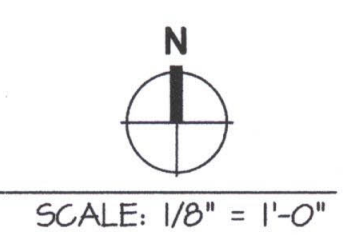
- 1 NOT USED
- 2 NOT USED
- 3 NOT USED
- 4 NOT USED
- 5 NOT USED
- 6 NOT USED
- 7 NOT USED
- 8 NOT USED
- 9 NOT USED
- 10 CONNECT TO RECEPTACLE CIRCUIT
- 11 SENSOR SWITCH #CMR-PDT-277-WH
- 12 SENSOR SWITCH #CMR-PDT-WH CONNECT TO E
- 13 0-10V DIMMER, 277V, LUTRON #DVSCTV-WH
- 14 MLV DIMMER, 277V, LUTRON #

RFI 375
RDM Electric - 9/10/13
Voltage for Type K Lights
Fixtures to be 277v and issues has been resolved.
Reference Sheets E016, E132A & E132L
The Electrical Plans for Buildings A & L show (5) Type K light fixtures to be installed in Room A105. (3) to be installed in Room A114 and (2) to be installed in Room L109. The fixture schedule calls out for the Type K light fixtures to be 277V, however the Type K light fixture that was submitted and approved is a 120V fixture. These light fixtures have already been ordered and delivered to the jobsite, but will not work with a 277V circuit. Please advise.

RFI 219
REQUEST:
RDM Electric - 12/6/12
Reference Sheets A232L & E132L
The Electrical Plan for Building L shows (1) Type H light fixture to be installed under the cabinet on the east wall of Room L109. The Type H light fixture is an Aris-4, which is 36-1/4" long. The cabinet that is to be installed along the east wall will not allow for the fixture to fit in the high under cabinet section.
Consultor Solution: Install an Aris-21, which is 19-1/4" long and will fit in this section.
ANSWER:
Ed Havitt - CMA - 12/18/12
Proposed solution acceptable.

RFI 288
REQUEST:
RDM Electric - 5/21/13
Reference Sheet E132L
In Building L, the Type B light fixtures in Hallway #2 (L111) and the Type A light fixtures in Hallway #3 (L117) do not appear to be controlled by a sensor or wall switch. Is it the intent for these lights to be controlled by the sensor in Hallway #1 (L109)? Please advise.
ANSWER:
John Maloney - JAIIE - 3/22/13
These hallways are controlled by the Lutron lighting control panel. They are programmed to be on during school/work hours. There is no motion control for these lights.

LIGHTING PLAN BUILDING L



J:\PE\L08B-1024\DATE\12-20-11 AC