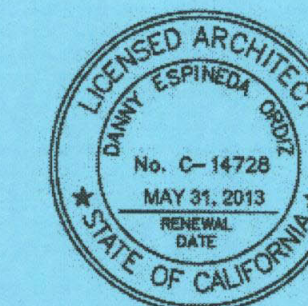


**ORDIZ
MELBY**
ARCHITECTS, INC.

5500 MING AVENUE SUITE 280
BAKERSFIELD, CALIFORNIA 93309
TELEPHONE (805) 832-6258
FACSIMILE (805) 832-4291



DANNY E. ORDIZ, AIA
ARCHITECT C-14,728

WILLIAM J. MELBY, AIA
ARCHITECT C-16,835

CONSULTANT

IDENTIFICATION STAMP
DIVISION OF STATE ARCHITECT
OFFICE OF REGULATION SERVICES

APPL # : 02-112027
FILE # : 15-6

AC _____ FLS _____ SS _____
DATE _____

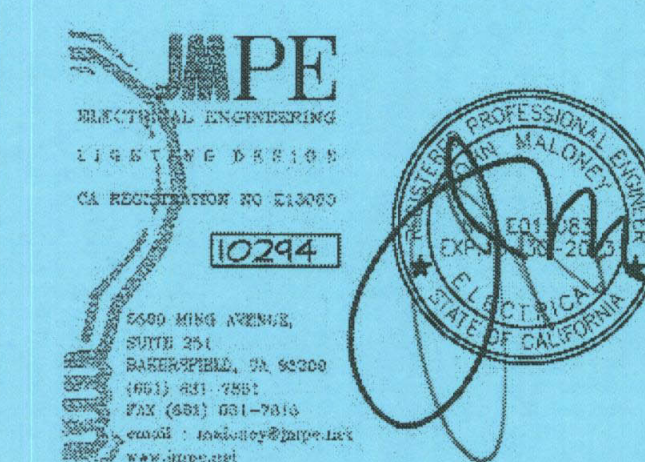
PTN # 63221-112

NEW ELEMENTARY SCHOOL
9801 HIGHLAND KNOLLS DR
BAKERSFIELD
CALIFORNIA
93306

NEW MIDDLE SCHOOL
4115 VINELAND ROAD
BAKERSFIELD
CALIFORNIA
93306

FOR:

BAKERSFIELD CITY SCHOOL
DISTRICT
1300 BAKER STREET
BAKERSFIELD
CALIFORNIA
93305



MARK	DATE	DESCRIPTION
------	------	-------------

△	2-7-12	REVISION REPLACE SHEET
△		
△		
△		

JOB NUMBER:
20101244
CAD DRAWING FILE:
#P1244-BLDG J,K (RESTROOM MID)-REV.ph
DRAWN BY:
AC
CHECKED BY:
PH

CHECK AND VERIFY ALL DIMENSIONS BEFORE
PROCEEDING WITH THE WORK.
REPORT DISCREPANCIES TO THE ARCHITECT.

THE DRAWING, IDEAS, AND DESIGNS
REPRESENTED ON THIS SHEET ARE THE
PROPERTY OF THE ARCHITECT.

COPYRIGHT
ORDIZ-MELBY ARCHITECTS, INC. 2010

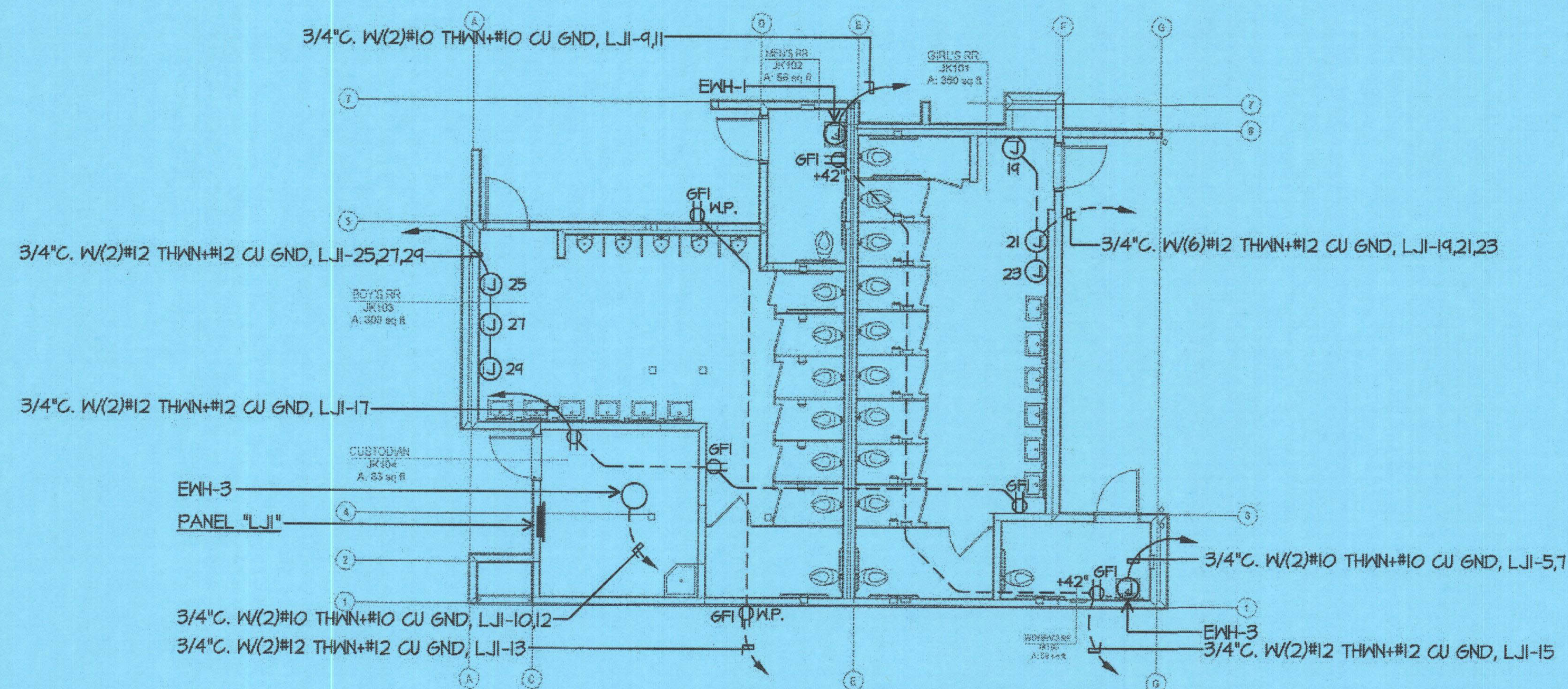
SHEET TITLE

ELECTRICAL PLAN
BUILDING J,K,Q,R

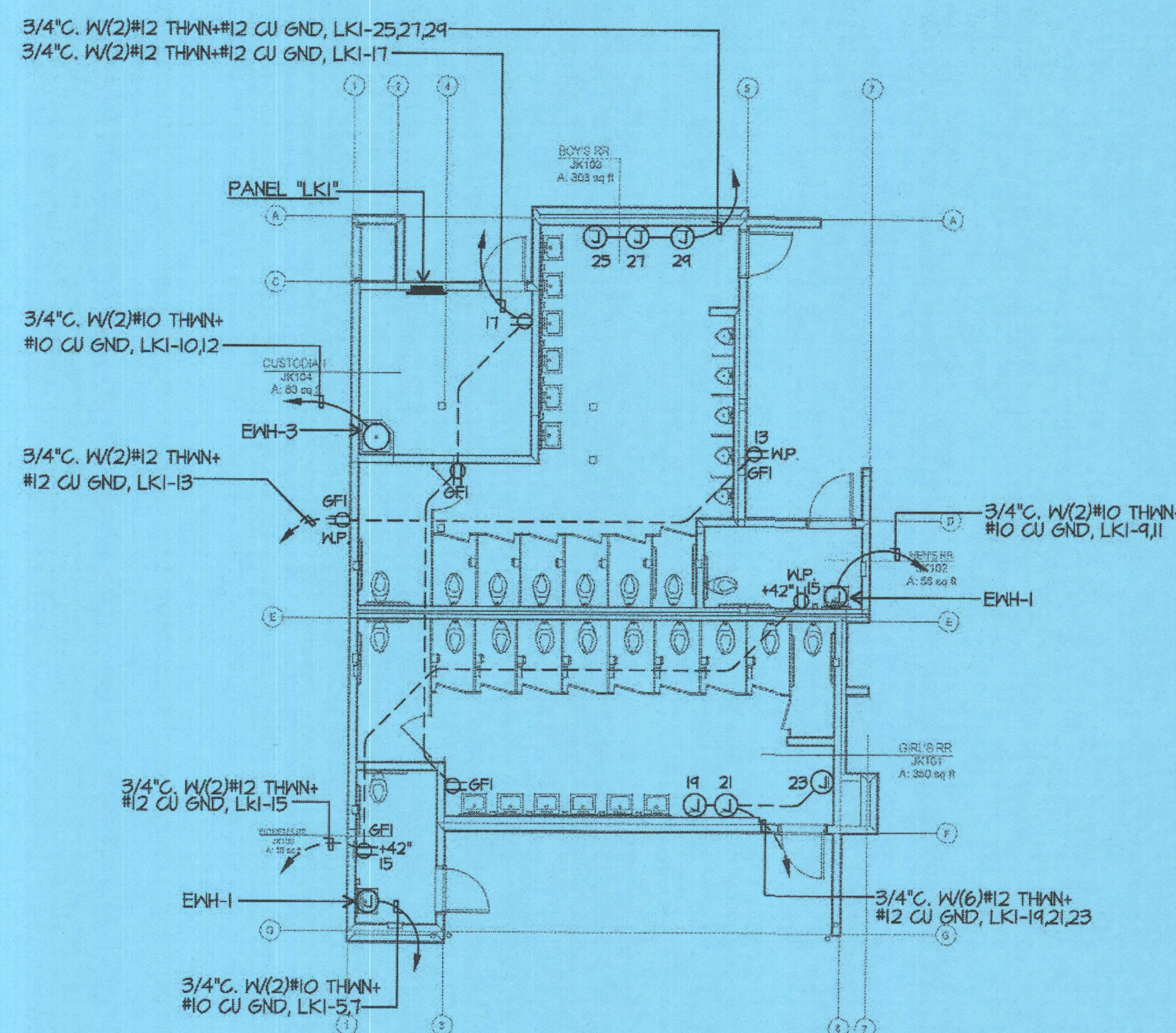
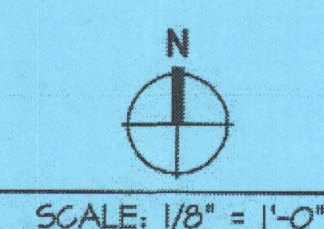
SHEET IDENTIFICATION NUMBER

E-R121J,K,Q,R

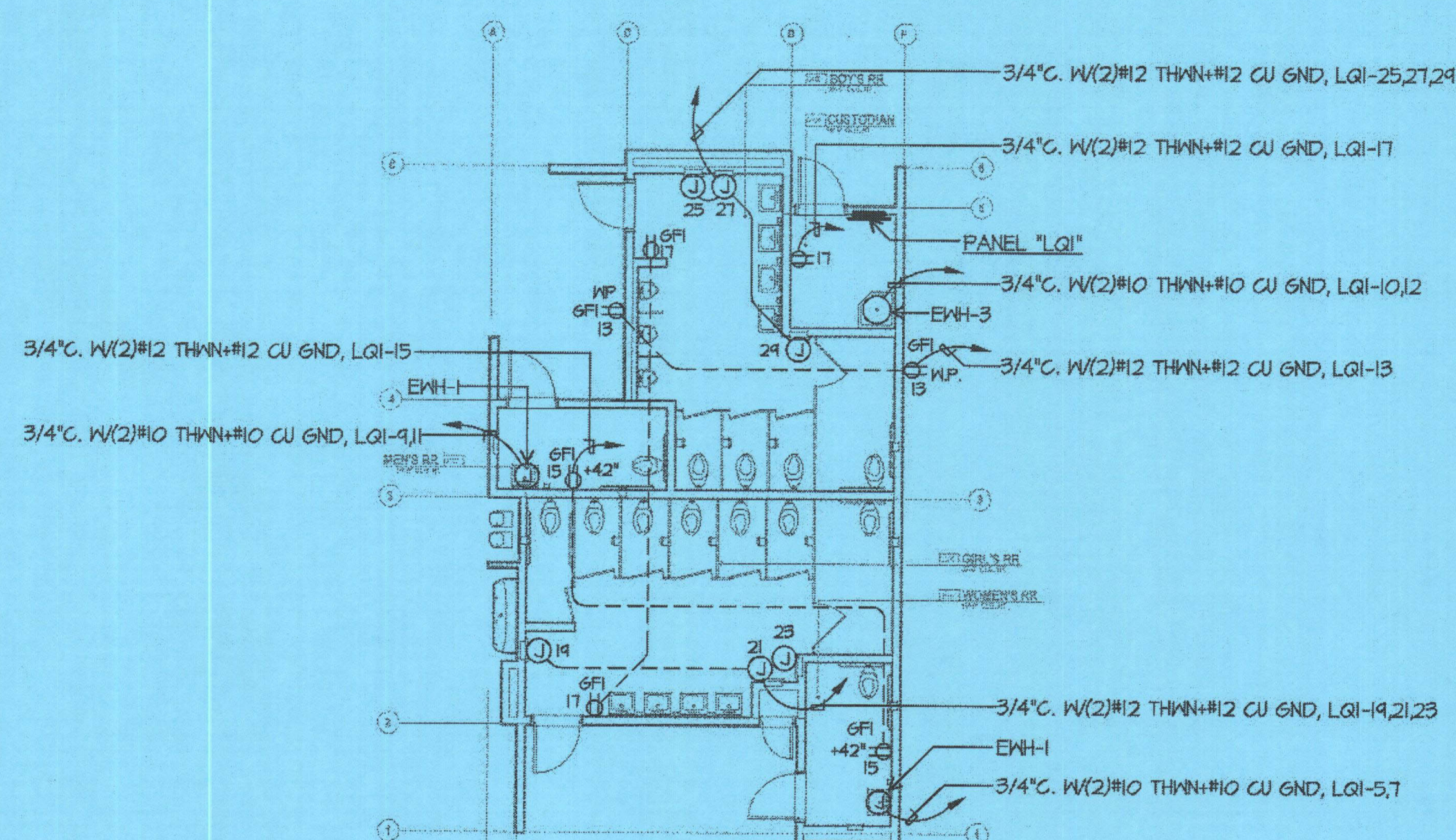
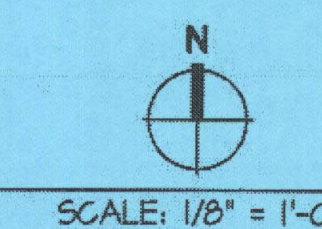
SHEET OF



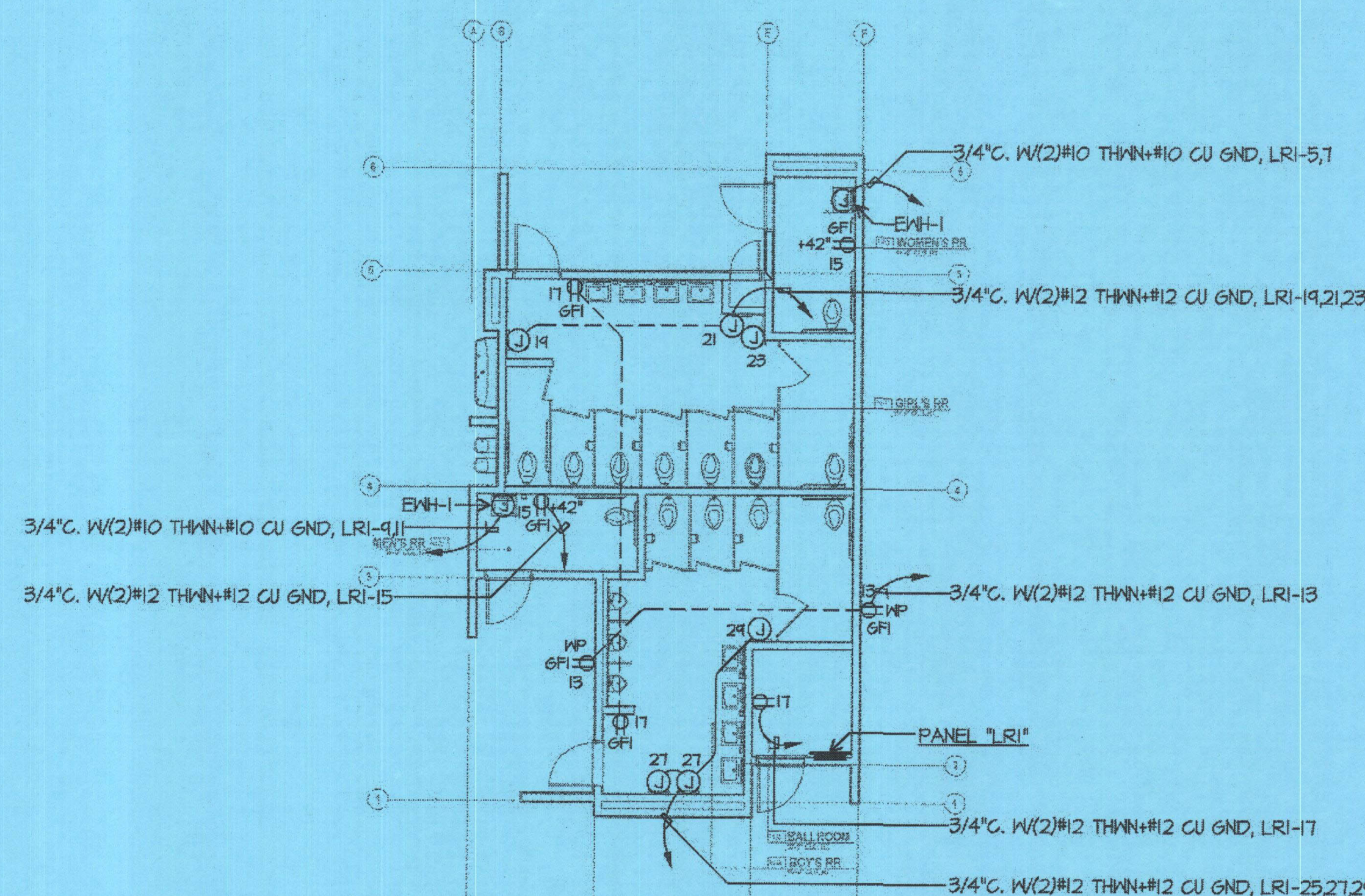
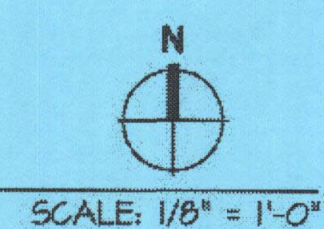
ELECTRICAL PLAN BUILDING J



ELECTRICAL PLAN BUILDING K



ELECTRICAL PLAN BUILDING Q



ELECTRICAL PLAN BUILDING R

