



DANNY E. ORDIZ, AIA
ARCHITECT C-14,728
WILLIAM J. MELBY, AIA
ARCHITECT C-16,835
CONSULTANT

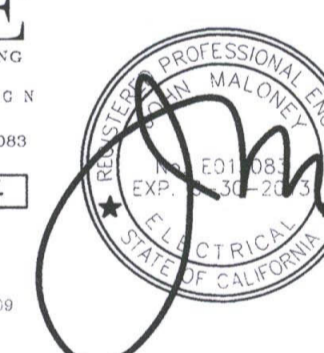
IDENTIFICATION STAMP
DIVISION OF STATE ARCHITECT
OFFICE OF REGULATION SERVICES
APPL. # 02-112027
FILE # 15-6
DATE JAN 20 2012

NEW ELEMENTARY SCHOOL
8601 HIGHLAND KNOLLS DR
BAKERSFIELD
CALIFORNIA
93306

NEW MIDDLE SCHOOL
4115 VINELAND ROAD
BAKERSFIELD
CALIFORNIA
93306

FOR:
BAKERSFIELD CITY SCHOOL
DISTRICT
1300 BAKER STREET
BAKERSFIELD
CALIFORNIA
93305

JMPE
ELECTRICAL ENGINEERING
LIGHTING DESIGN
CA REGISTRATION NO. E13093
10294



MARK	DATE	DESCRIPTION
△		
△		
△		

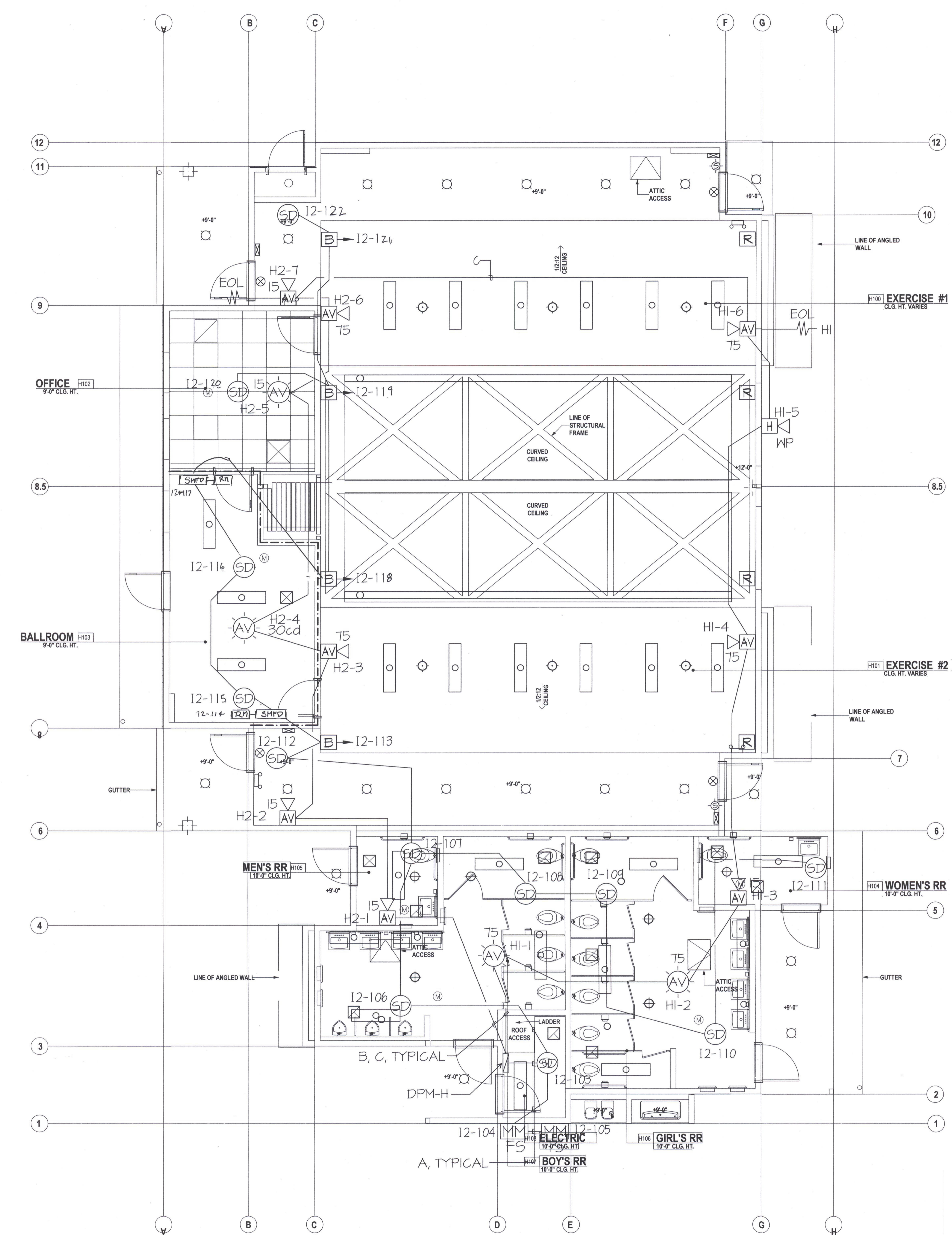
JOB NUMBER:
20101244
CAD DRAWING FILE:
DRAWN BY:
AC
CHECKED BY:
PH
CHECK AND VERIFY ALL DIMENSIONS BEFORE
PROCEEDING WITH THE WORK.
REPORT DISCREPANCIES TO THE ARCHITECT.
THE DRAWINGS, IDEAS, AND DESIGNS
REPRESENTED ON THIS SHEET ARE THE
PROPERTY OF THE ARCHITECT.
COPYRIGHT
ORDIZ MELBY ARCHITECTS, INC. 2010

**FIRE ALARM PLAN
BUILDING H**

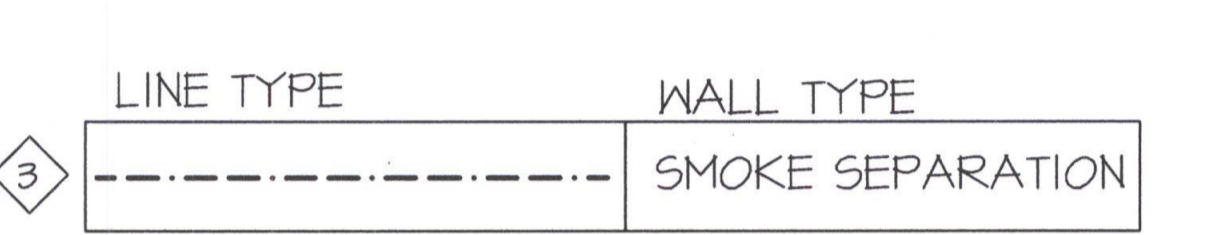
SHEET IDENTIFICATION NUMBER

E-131H

SHEET OF



- FIRE ALARM PLAN NOTES**
- 1 FIRE ALARM CABLES SHOWN ARE DIAGRAMMATIC. INSTALL CABLES PARALLEL AND PERPENDICULAR TO WALLS AT HIGHEST LOCATION POSSIBLE. SUPPORT FIRE ALARM CABLE(S) EVERY 5' W/ RED J-HOOKS TYPICAL. FIRE ALARM CABLE(S) AND THEIR SUPPORT(S) SHALL BE INDEPENDENT FROM COMMUNICATION CABLE SUPPORT, TYPICAL.
 - 2 INSTALL POWER BOOSTER PANEL FLUSH IN NEW WALL. ALL FIRE ALARM CABLES INSTALLED IN WALLS SHALL BE IN EMT CONDUIT.
 - 3 AT WALLS ABLE TO RESIST THE PASSAGE OF SMOKE, CAULK ALL PENETRATIONS.



- BEAM DETECTOR NOTES**
1. MAX DISTANCE BETWEEN BEAMS IS 30FT.
 2. MAX DISTANCE FROM WALL AND CEILING PEAK IS 15FT.

REQUEST:
RDM Electric - 12/27/12 RFI 237

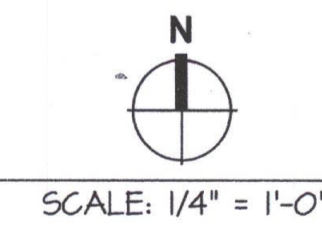
Reference A131H & E132H
The Architectural Plan for Building H shows (2) exterior light fixtures located just south of Room H106. However, the Electrical Plan for Building H does not show these light fixtures. Are they required? If so, please advise on the fixture type, quantity & size of conductive panel designation and circuitry.

ANSWER:
Ed Hewitt - OMA - 12/28/12
The lights questioned in RFI 237 are not required.

CABLE LEGEND

A	WESTPENN 975 (SLC)
B	WESTPENN 998 (STROBE)
C	WESTPENN 975 (SPEAKERS)

FIRE ALARM PLAN BUILDING H



.MPE/2/DBH/0294/DATE:12-27-11 AC