



*Danny E. Ordiz*  
DANNY E. ORDIZ, AIA  
ARCHITECT C-14,728  
WILLIAM J. MELBY, AIA  
ARCHITECT C-16,835  
CONSULTANT

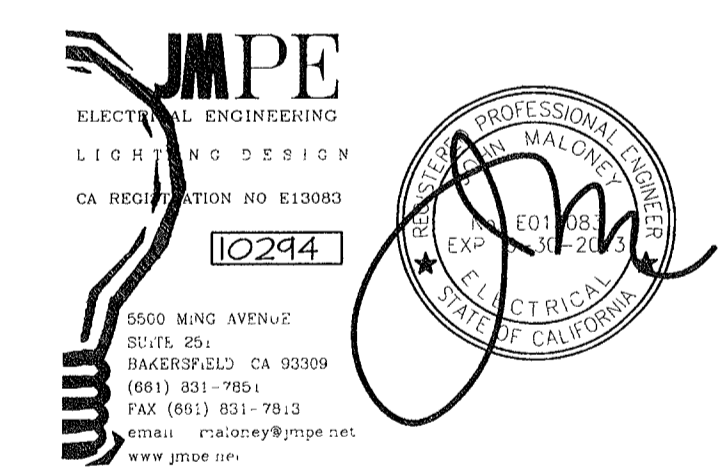
IDENTIFICATION STAMP  
DIVISION OF STATE ARCHITECT  
OFFICE OF REGULATION SERVICES  
APPL. # 02-112027  
FILE # 15-6  
AC. *[Signature]* SS. *[Signature]*  
DATE 1/18/12

NEW ELEMENTARY SCHOOL  
9801 HIGHLAND KNOLLS DR  
BAKERSFIELD  
CALIFORNIA  
93306

NEW MIDDLE SCHOOL  
4115 VINELAND ROAD  
BAKERSFIELD  
CALIFORNIA  
93306

FOR:

BAKERSFIELD CITY SCHOOL DISTRICT  
1300 BAKER STREET  
BAKERSFIELD  
CALIFORNIA  
93305



MARK DATE DESCRIPTION

△		
△		
△		
△		

JOB NUMBER  
20101244  
CAD DRAWING FILE

DRAWN BY:  
AC  
CHECKED BY:  
PH

CHECK AND VERIFY ALL DIMENSIONS BEFORE  
PROCEEDING WITH THE WORK.  
REPORT DISCREPANCIES TO THE ARCHITECT.

THE DRAWINGS, IDEAS, AND DESIGNS  
PRESENTED ON THIS SHEET ARE THE  
PROPERTY OF THE ARCHITECT

COPYRIGHT  
ORDIZ MELBY ARCHITECTS, INC. 2010

SHEET TITLE  
**FIRE ALARM PLAN  
BUILDING E**

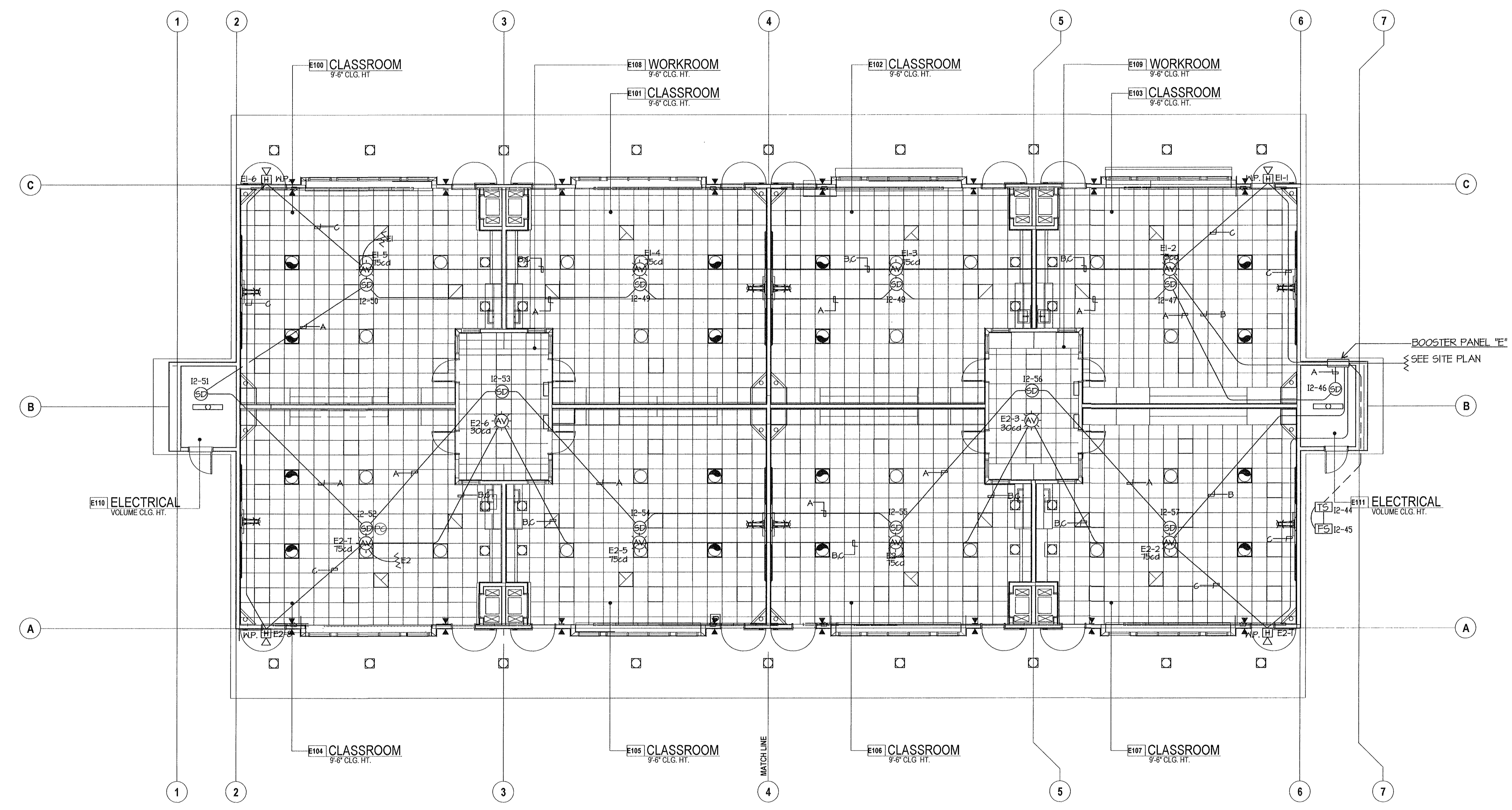
SHEET IDENTIFICATION NUMBER

**E-131E**

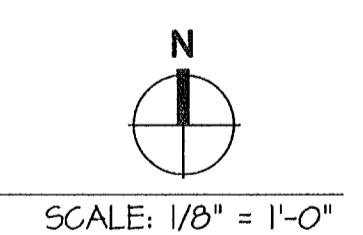
SHEET OF

**FIRE ALARM PLAN NOTES**

- 1 FIRE ALARM CABLES SHOWN ARE DIAGRAMMATIC. INSTALL CABLES PARALLEL AND PERPENDICULAR TO WALLS AT HIGHEST LOCATION POSSIBLE. SUPPORT FIRE ALARM CABLE(S) EVERY 5' W/ RED J-HOOKS TYPICAL. FIRE ALARM CABLE(S) AND THEIR SUPPORT(S) SHALL BE INDEPENDENT FROM COMMUNICATION CABLE SUPPORT, TYPICAL.
- 2 INSTALL POWER BOOSTER PANEL FLUSH IN NEW WALL. ALL FIRE ALARM CABLES INSTALLED IN WALLS SHALL BE IN EMT CONDUIT.



FIRE ALARM PLAN BUILDING E



SCALE: 1/8" = 1'-0"

CABLE LEGEND	
A	WESTPENN 975 (SLC)
B	WESTPENN 998 (STROBE)
C	WESTPENN 975 (SPEAKERS)

\*E:\JOB\10244\DATE\12-04-11 AC