



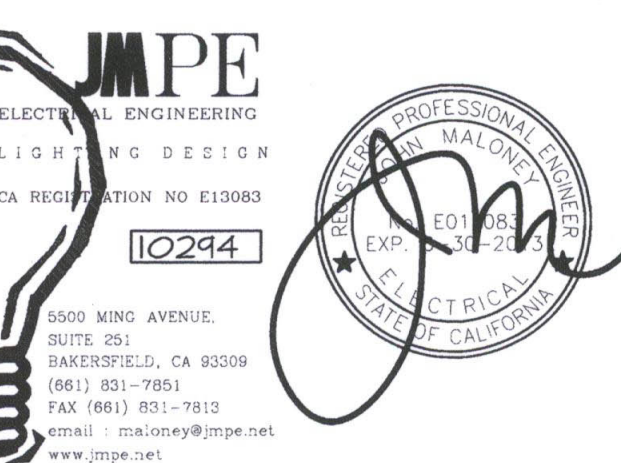
Danny E. Ordiz, AIA
ARCHITECT C-14,728
William J. Melby, AIA
ARCHITECT C-16,835
CONSULTANT

IDENTIFICATION STAMP
DIVISION OF STATE ARCHITECT
OFFICE OF REGULATION SERVICES
APPL # : 02-112027
FILE # : 15-6
DATE 11/5/12

NEW ELEMENTARY SCHOOL
9801 HIGHLAND KNOLLS DR
BAKERSFIELD
CALIFORNIA
93306

NEW MIDDLE SCHOOL
4115 VINELAND ROAD
BAKERSFIELD
CALIFORNIA
93306

FOR:
BAKERSFIELD CITY SCHOOL
DISTRICT
1300 BAKER STREET
BAKERSFIELD
CALIFORNIA
93305



MARK DATE DESCRIPTION

△		
△		
△		
△		

JOB NUMBER:
20101244
CAD DRAWING FILE:
1244-BLDG A (MULTIPURPOSE).CDR
DRAWN BY:
AC
CHECKED BY:
PH

CHECK AND VERIFY ALL DIMENSIONS BEFORE
PROCEEDING WITH THE WORK.
REPORT DISCREPANCIES TO THE ARCHITECT.
THE DRAWINGS, IDEAS, AND DESIGNS
REPRESENTED ON THIS SHEET ARE THE
PROPERTY OF THE ARCHITECT.

COPYRIGHT
ORDIZ-MELBY ARCHITECTS, INC. 2010

SHEET TITLE
**FIRE ALARM PLAN
BUILDING D**

SHEET IDENTIFICATION NUMBER

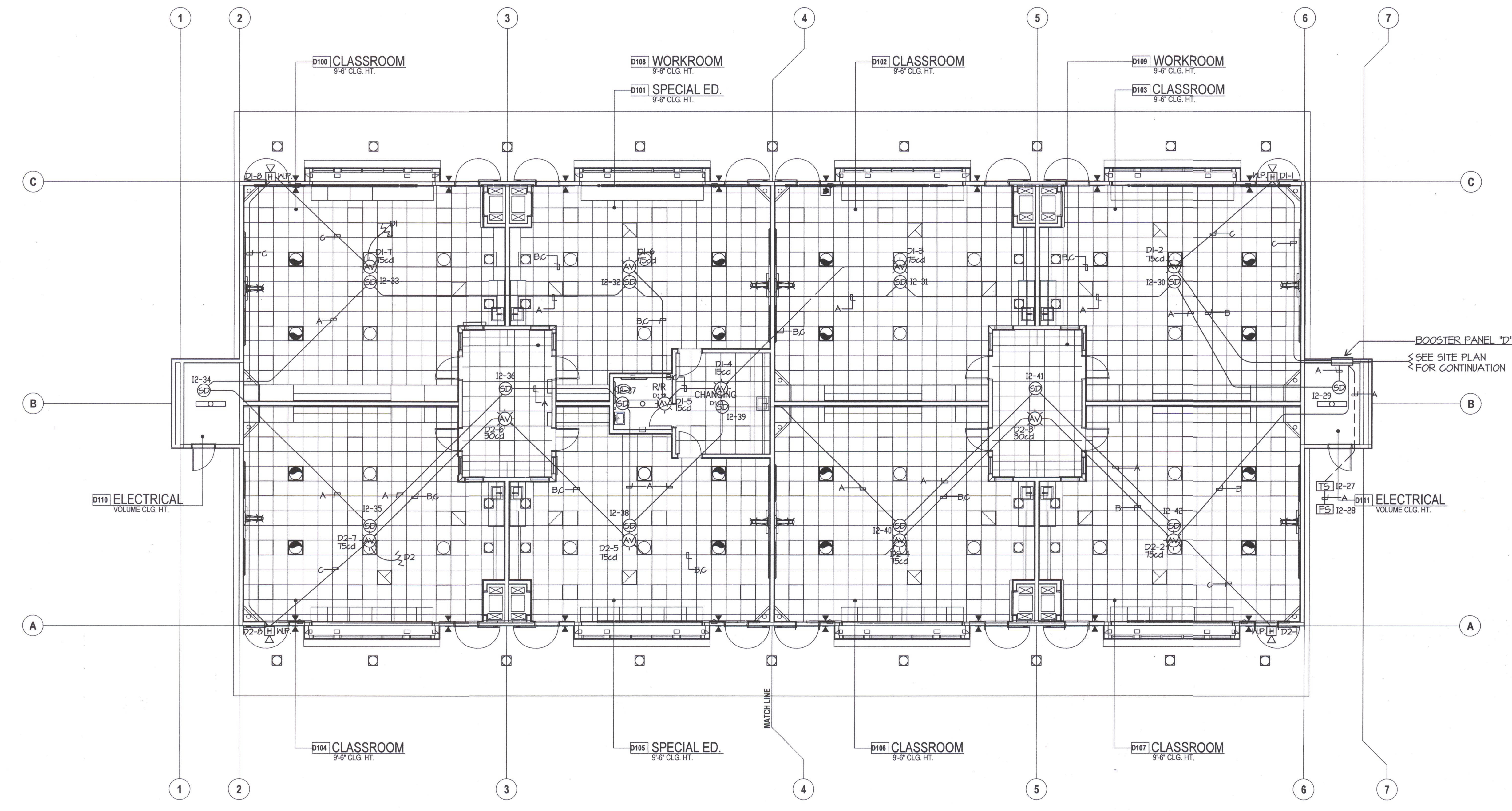
E-131D
SHEET OF

FIRE ALARM PLAN NOTES

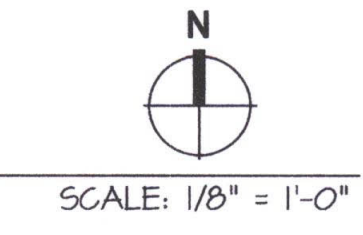
- 1 FIRE ALARM CABLES SHOWN ARE DIAGRAMMATIC. INSTALL CABLES PARALLEL AND PERPENDICULAR TO WALLS AT HIGHEST LOCATION POSSIBLE. SUPPORT FIRE ALARM CABLE(S) EVERY 5' W/RED I-HOOKS TYPICAL. FIRE ALARM CABLE(S) AND THEIR SUPPORT(S) SHALL BE INDEPENDENT FROM COMMUNICATION CABLE SUPPORT, TYPICAL.
- 2 INSTALL POWER BOOSTER PANEL FLUSH IN NEW WALL. ALL FIRE ALARM CABLES INSTALLED IN WALLS SHALL BE IN EMT CONDUIT.

Tomhawk Builders - 517713
Reflected Ceiling Plans at Buildings D & G Classrooms do not show the same Suspended Ceiling quantities as that which are shown on Electrical Drawings Sheet E-1310 and E-1302. Our Schedule submitted was based on the design criteria shown on the Reflected Ceiling Plans. Please advise.

Joe Covington - OMA - 517713
After review of Architectural Plans it has been determined that the Buildings D and G refer to one Classroom in Building D100 as "TYPICAL MIDDLE SCHOOL" classroom.
The Reflected ceiling plan for this one classroom indicates the diameter provided for the skylights as required for the "TYPICAL MIDDLE SCHOOL" classroom.
Whether or not they are shown on other reflected ceiling plans should have raised the question prior to bid.
The fact that the Electrical documents indicate the required electrical connections to be provided for all the locations considered TYPICAL should also have raised the question concerning which skylights are provided with diameters since all documents are to be reviewed and coordinated prior to bid.
We stand by our decision that all Classrooms, both Elementary and Middle have been designed with the exact same layout and amenities, and no statements providing direction of DISCREPANCIES were provided for their use.
Any questions regarding discrepancies or requests for clarification should have been submitted prior to bid.



FIRE ALARM PLAN BUILDING D



CABLE LEGEND	
A	WESTPENN 975 (SLC)
B	WESTPENN 998 (STROBE)
C	WESTPENN 975 (SPEAKERS)

FILED 08/10/2014 DATE: 12-09-11 AC