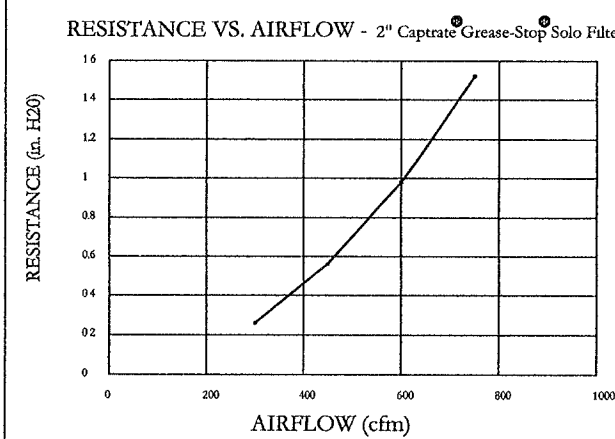


Captrate Grease-Stop Solo Filter



Filter Detail

CAPTRATE

EXHAUST CFM=LENGTH OF HOOD X CFM/LIN.FT. (LOAD)
 SUPPLY CFM=EXHAUST CFM X PERCENTAGE REQUIRED
 TOTAL DUCT AREA=144 X CFM
 DUCT LENGTH= TOTAL DUCT AREA / DUCT DEPTH

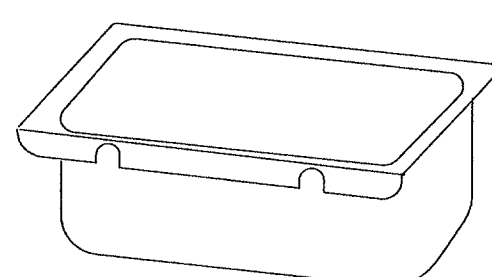
*CAPTRATE HOODS ARE CALCULATED USING AN EXHAUST VELOCITY OF 1600-1800 FPM AND A SUPPLY VELOCITY OF 1000 FPM. PLEASE CONSULT FACTORY FOR MAXIMUM ALLOWABLE DUCT SIZES.

CALCULATIONS UTILIZED

- NFPA #86
- ETL SANITIZATION
- BOLA #20-16
- ICSB 34416
- SROD PST & ESI NO. 63137
- ETL LISTED 304-001-001
- US ASSESS #89890
- ETL IS LISTED TO UL STANDARDS



BUILDING CODES



Grease cup will be supported by 2 studs on the inside wall of the hood. The grease will drain through a concealed grease trough and into this removable cup.

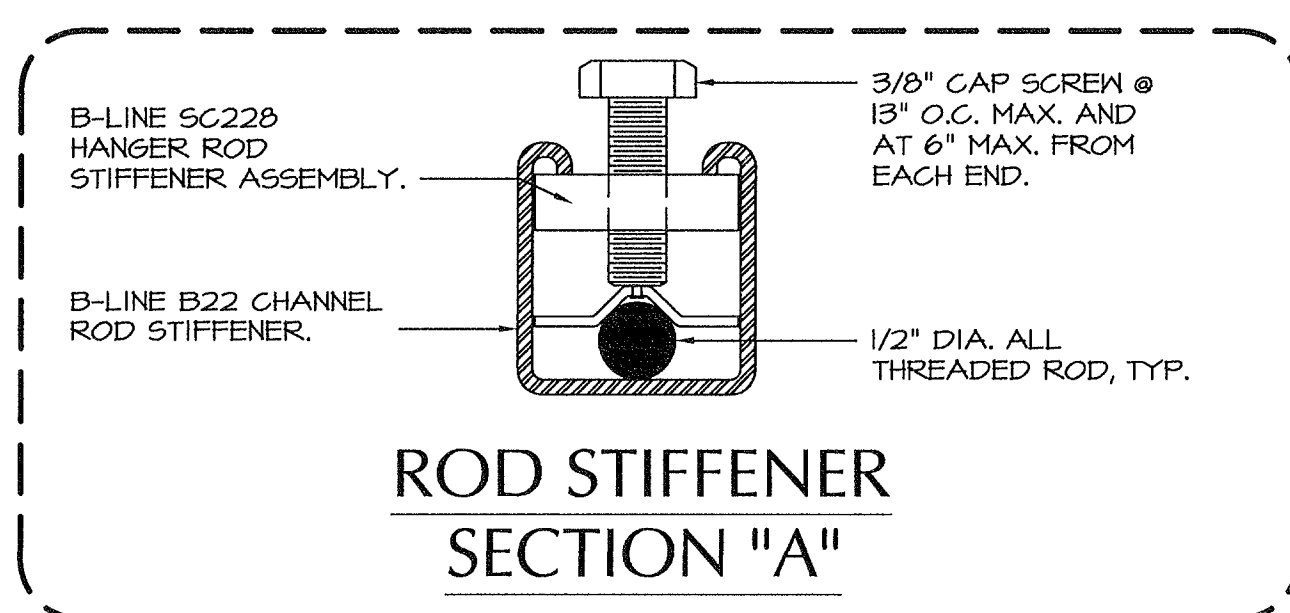
1/2 Pint Grease Cup Detail

HOOD NO.	TAG	MODEL	LENGTH	MAX. COOKING TEMP.	TOTAL EXH. CFM	EXHAUST PLENUM RISER(S)				S.P.	TOTAL SUP. CFM	SUPPLY PLENUM RISER(S)				HOOD CONSTRUCTION	HOOD CONFIG.	
						WIDTH	LENG.	DIA.	CFM			WIDTH	LENG.	DIA.	CFM		END TO END	ROW
A1	ITEM # 11	4824 VHB-G	4' 0.00"	700 Deg.	700			12"	700	-0.090"	0				304 SS 100%	ALONE	ALONE	
A2	ITEM # 26 (LEFT)	6624 VHB-G-PSP-F-ND	8' 9.00"	700 Deg.	1531	16"	16"		1531	-0.114"	1378			304 SS 100%	LEFT	ALONE		
A3	ITEM # 26 (RIGHT)	6624 VHB-G-PSP-F-ND	8' 9.00"	700 Deg.	1531	16"	16"		1531	-0.114"	1378			304 SS 100%	RIGHT	ALONE		
A4	ITEM # 32	6024 ND-2-PSP-F	14' 7.00"	450 Deg.	2552	10"	12"		1276	-0.545"	2297			304 SS 100%	ALONE	ALONE		

HOOD NO.	FILTER(S)				LIGHT(S)			UTILITY CABINET(S)				FIRE SYSTEM PIPING	HOOD HANGING WGT	
	TYPE	QTY.	HEIGHT	LENGTH	TYPE	WIRE GUARD	LOCATION	TYPE	SIZE	MODEL #	QUANTITY			LOCATION
A1													NO	177 LBS
A2					4' LED Tube light, T8	NO							NO	443 LBS
A3					4' LED Tube light, T8	NO							NO	418 LBS
A4	Captrate Solo Filter w/	1	20"	16"	4' LED Tube light, T8	NO	Right	Ansul R102	3.0/3.0/1.5	EMS21183	1 Light 1 Fan 1 Other	Outside	YES	881 LBS

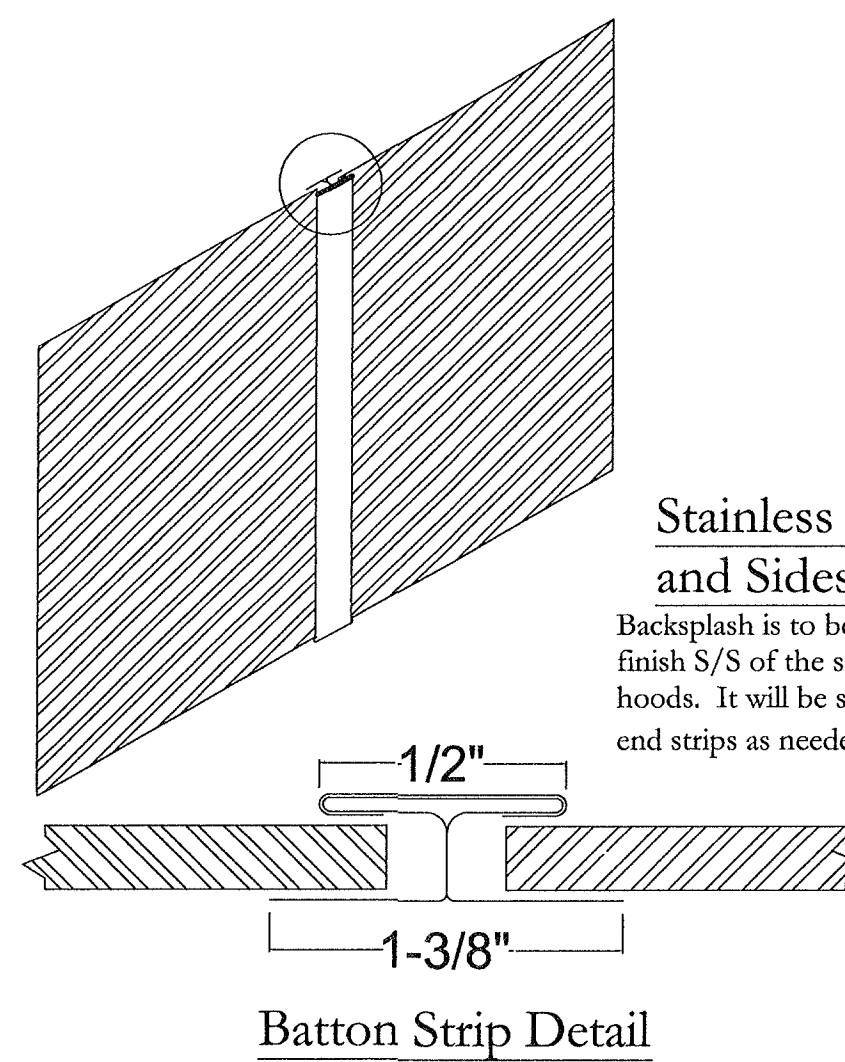
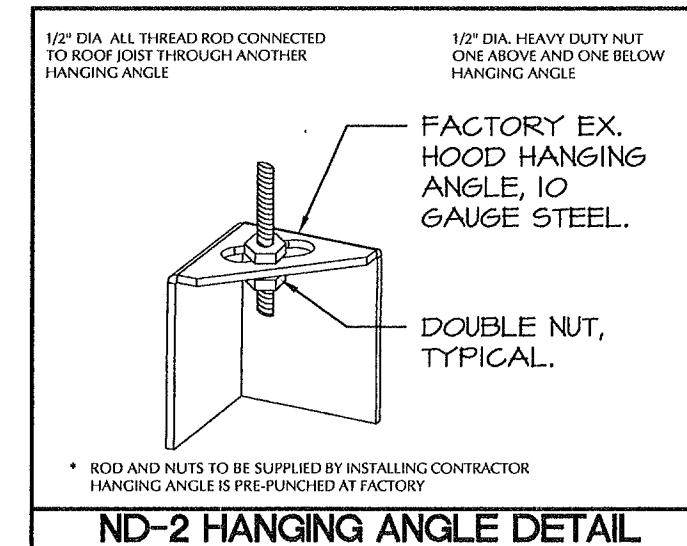
HOOD NO.	OPTION		LENGTH	WIDTH	HEIGHT	MATERIAL
	TYPE	LOCATION				
A1	FIELD WRAPPER	Front, Right	Field determine height.			
	BACKSPLASH	80.00" High X 48.00" Long	304 SS			
	LEFT SIDESPLASH	80.00" High X 48.00" Long	304 SS			
	BACKSPLASH - INSIDE CORNER	80.00" High X 4.00" Long	304 SS			
A2	FIELD WRAPPER	Front, Left	Field determine height.			
	BACKSPLASH	80.00" High X 105.00" Long	304 SS			
	LEFT QUARTER END PANEL	23" Top Width, 0" Bottom Width, 23" High	304 SS			
A3	FIELD WRAPPER	Front	Field determine height.			
	BACKSPLASH	80.00" High X 105.00" Long	304 SS			
	RIGHT SIDESPLASH	80.00" High X 66.00" Long	304 SS			
	BACKSPLASH - INSIDE CORNER	80.00" High X 4.00" Long	304 SS			
A4	FIELD WRAPPER	Front, Left, Right	Field determine height.			
	BACKSPLASH	80.00" High X 187.00" Long	304 SS			
	RIGHT QUARTER END PANEL	23" Top Width, 0" Bottom Width, 23" High	304 SS			
	LEFT QUARTER END PANEL	23" Top Width, 0" Bottom Width, 23" High	304 SS			
	STRUCTURAL FRONT PANEL					

HOOD NO.	POS.	LENGTH	WIDTH	HEIGHT	RISER(S)				
					WIDTH	LENG.	DIA.	CFM	S.P.
A2	Front	105"	12"	6"	8"	26"		687	0.202"
A3	Front	105"	12"	6"	8"	26"		687	0.202"
A4	Front	187"	12"	6"	8"	26"		764	0.213"
					8"	26"		764	0.213"



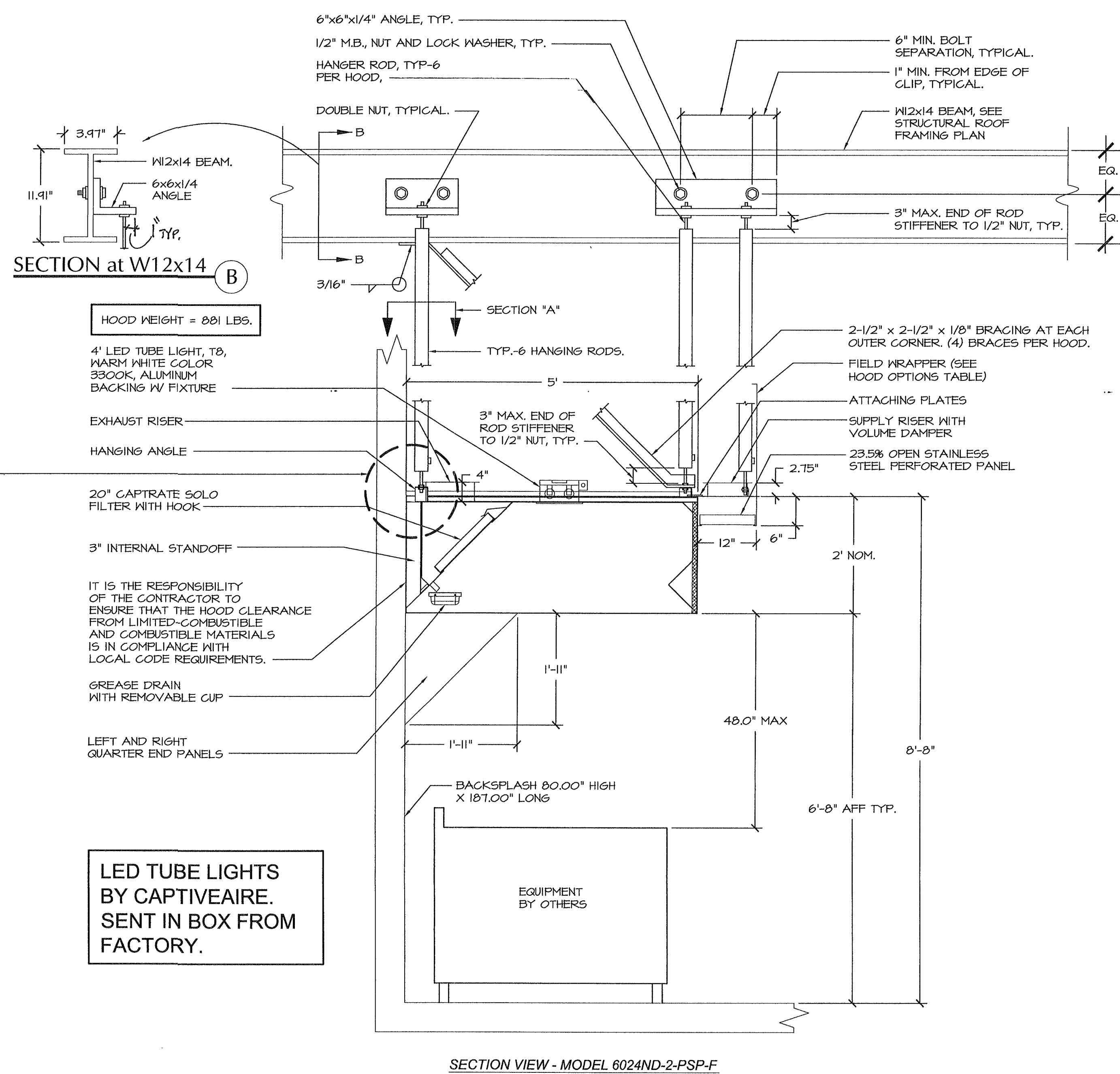
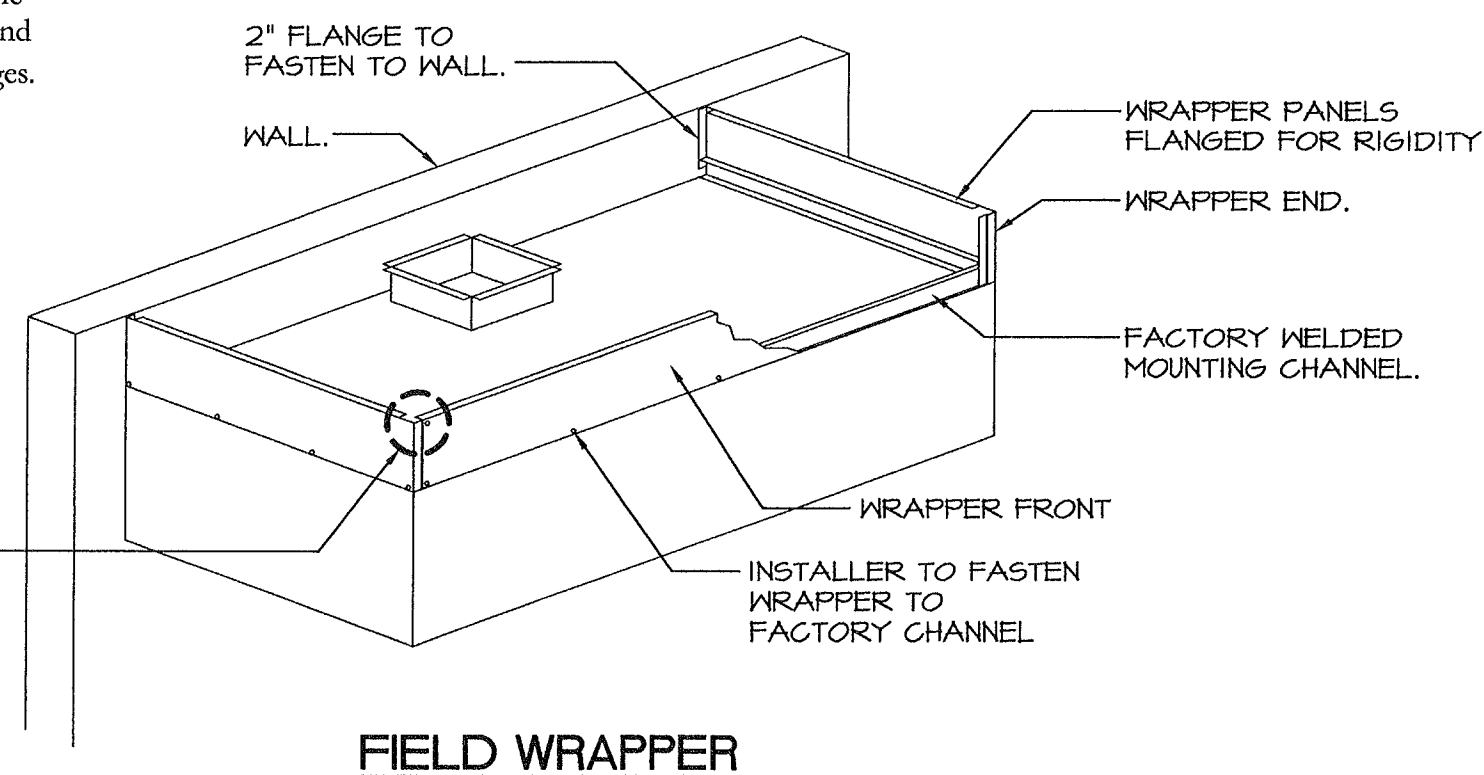
HANGING ANGLES WILL BE LOCATED IN THE FOLLOWING LOCATIONS FOR WALL CANOPIES

HOOD STYLE	DIM FROM REAR	DIM FROM FRONT (24" High Hood)	DIM FROM FRONT (30" High Hood)
Wall Exhaust Only	4.166"	2.25"	2.25"
Wall With MUA	4.166"	2.25"	2.25"
Back Shelf Exhaust Only	4.166"	2.25"	2.25"
Back Shelf With MUA	4.166"	2.25"	2.25"
Condensate	2.25"	2.25"	

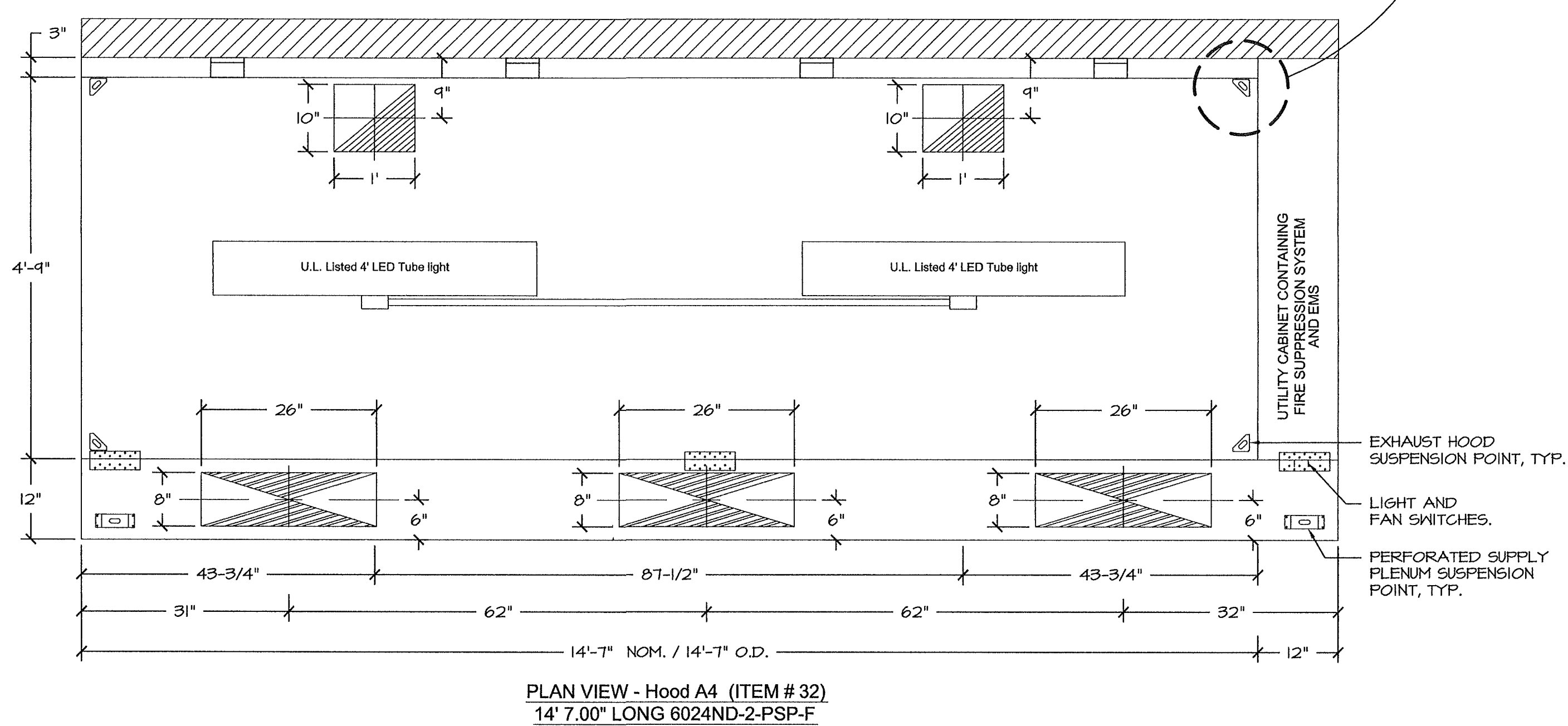


Stainless Steel Backsplash and Sidesplash

Backsplash is to be manufactured from #3 or #4 finish S/S of the same gauge and material as the hoods. It will be supplied with Batton strips and end strips as needed to close all seams and edges.



LED TUBE LIGHTS BY CAPTIVEAIRE. SENT IN BOX FROM FACTORY.



ITEM # 32 (KH-4)
 NOTE: MODEL ND-2-PSP IS AN ETL LISTED HOOD
 ETL LISTING IS 105 CFM/FT (450 DEGREES)
 Q = ETL LISTING * 14' 7" = 1531 CFM < 2552 CFM (DESIGN)
 MODEL ND-2-PSP IS ETL LISTED WITH 1 EX RISER UP TO 16'

FOR QUESTIONS, CALL
 KURT CURTIS, REGIONAL MANAGER
 133 KISSLING ST., SAN FRANCISCO, CA 94103
 PHONE: (415) 956-2200
 FAX: (919) 227-5940
 EMAIL: kcg91@captivaire.com

ORDIZ MELBY
 ARCHITECTS, INC.
 5500 MING AVENUE SUITE 280
 BAKERSFIELD, CALIFORNIA 93309
 TELEPHONE (661) 832-5258
 FACSIMILE (661) 832-4291

IDENTIFICATION STAMP
 DIVISION OF STATE ARCHITECT
 OFFICE OF REGULATION SERVICES
 APPR. #02-112027
 FILE # 15-6
 DATE JAN 2 0 2012
 P/N # 63321-112

NEW ELEMENTARY SCHOOL
 9801 HIGHLAND KNOLLS DR
 BAKERSFIELD CALIFORNIA 93306
 NEW MIDDLE SCHOOL
 4115 VINELAND ROAD
 BAKERSFIELD CALIFORNIA 93306

FOR:
 BAKERSFIELD CITY SCHOOL DISTRICT
 1300 BAKER STREET
 BAKERSFIELD CALIFORNIA 93305

MARK	DATE	DESCRIPTION
△		
△		
△		
△		

20010244
 CAD DRAWING FILE:
 DRAWN BY: KW
 CHECKED BY: MB
 CHECK AND VERIFY ALL DIMENSIONS BEFORE PROCEEDING WITH THE WORK.
 REPORT DISCREPANCIES TO THE ARCHITECT.
 THE DRAWINGS, IDEAS AND DESIGN REPRESENTED ON THIS SHEET ARE THE PROPERTY OF THE ARCHITECT.
 COPYRIGHT
 ORDIZ-MELBY ARCHITECTS, INC. 2010
 SHEET TITLE

MECHANICAL DETAILS - KITCHEN EXHAUST HOOD

SHEET IDENTIFICATION NUMBER

M-505

CAPTIVEAIRE
 MECHANICAL DESIGN CONCEPTS, INC.
 5500 Ming Ave, Suite 251 Bakersfield, CA 93309
 Tel #: (661) 397-2114 Fax #: (661) 397-2114
 Job: 09091

