



D. Ordiz
DANNY E. ORDIZ, AIA
ARCHITECT C-14,728
WILLIAM J. MELBY, AIA
ARCHITECT C-16,835
CONSULTANT

IDENTIFICATION STAMP
DIVISION OF STATE ARCHITECT
OFFICE OF REGULATION SERVICES
APPL. # : 02-112027
FILE # : 15-6
AC - [Signature] SS - [Signature]
DATE: JAN 20 2012

LIGHTING PLAN NOTES

- 1 LIGHTING FURNISHED WITH WALK-IN.
- 2 LUTRON CONTROL CABLE TO GRAFIK EYE.
- 3 SENSOR SWITCH #CMR-PDT. CONNECT EF.
- 4 SENSOR SWITCH #CMR-PDT-277
- 5 CONNECT TO RECEPTACLE CIRCUIT AT COUNTER.
- 6 0-10V DIMMER, 277V
- 7 MLV DIMMER
- 8 REFER TO SHEET A121B FOR LOCATION OF FIREBARRIER. SEE DETAILS "A" "B" AND "C" ON SHEET E-007 FOR FIREWALL PENETRATION REQUIREMENTS.
- 9 EMERGENCY EXTERIOR FIXTURES SHALL HAVE EQUIPMENT GROUNDING CONDUCTOR, NEUTRAL, SWITCHED HOT AND HOT TYPICAL.
- 10 AT WALLS ABLE TO RESIST THE PASSAGE OF SMOKE, CAULK ALL PENETRATIONS.

LINE TYPE	WALL TYPE
(Symbol)	FIRE BARRIER WALL
(Symbol)	SMOKE SEPARATION

Type	To Request From	Number	Issue	Title	Answer	Status	Order	Responsible	Required
RFI	CM	LM	MM200	Dimmer Switches	John Maloney - JMPE Electrical Engineering & Lighting Design - 2/10/12	CLO	2/10/12	2/22/12	

A/C Electric - 2/14/12
Sheet E-132B, Rooms B106, B102 & B103 show 5-0-5-7-7 as the lighting control. If the 5-0-5-7-7 is a Lutron DSVC277 dimmer and the 5-0-7-7 is a Lutron T0130 Dimmer, they need to be in separate switch boxes as the Lutron DSVC277 dimmer and the Lutron T0130 Dimmer are not compatible. In this case, please specify both dimmers. Both should be under one cover in the same box. Lutron DSVC277 dimmer, Lutron T0130 Dimmer, 2 gang pass - Lutron.

REQUEST:
RFI Electric - 10/18/12
Reference Sheet E-132B, E-132B & E-132C.
1. The Light Fixture Schedule calls out for a Type F light fixture to be installed in Room B105. The Electrical Plans for Building B show a Type F light fixture to be installed in Room B105, but this fixture measures out to be 16 feet long. Is this (1) Type F light fixture to be 16 feet long as called out for on the Fixture Schedule or does it need to be 18 feet long? Please advise.
2. The Light Fixture Schedule calls out for a Type P light fixture to be 12 feet long. The Electrical Plans for Building B show a Type P light fixture to be installed in Room B100, but this fixture measures out to be 14 feet long. Also, the Electrical Plans show a Type P light fixture to be installed in Room B101, but this fixture measures out to be approximately 19 feet long. Please confirm the lengths and quantities of the Type P light fixtures in Rooms B100 and B101.

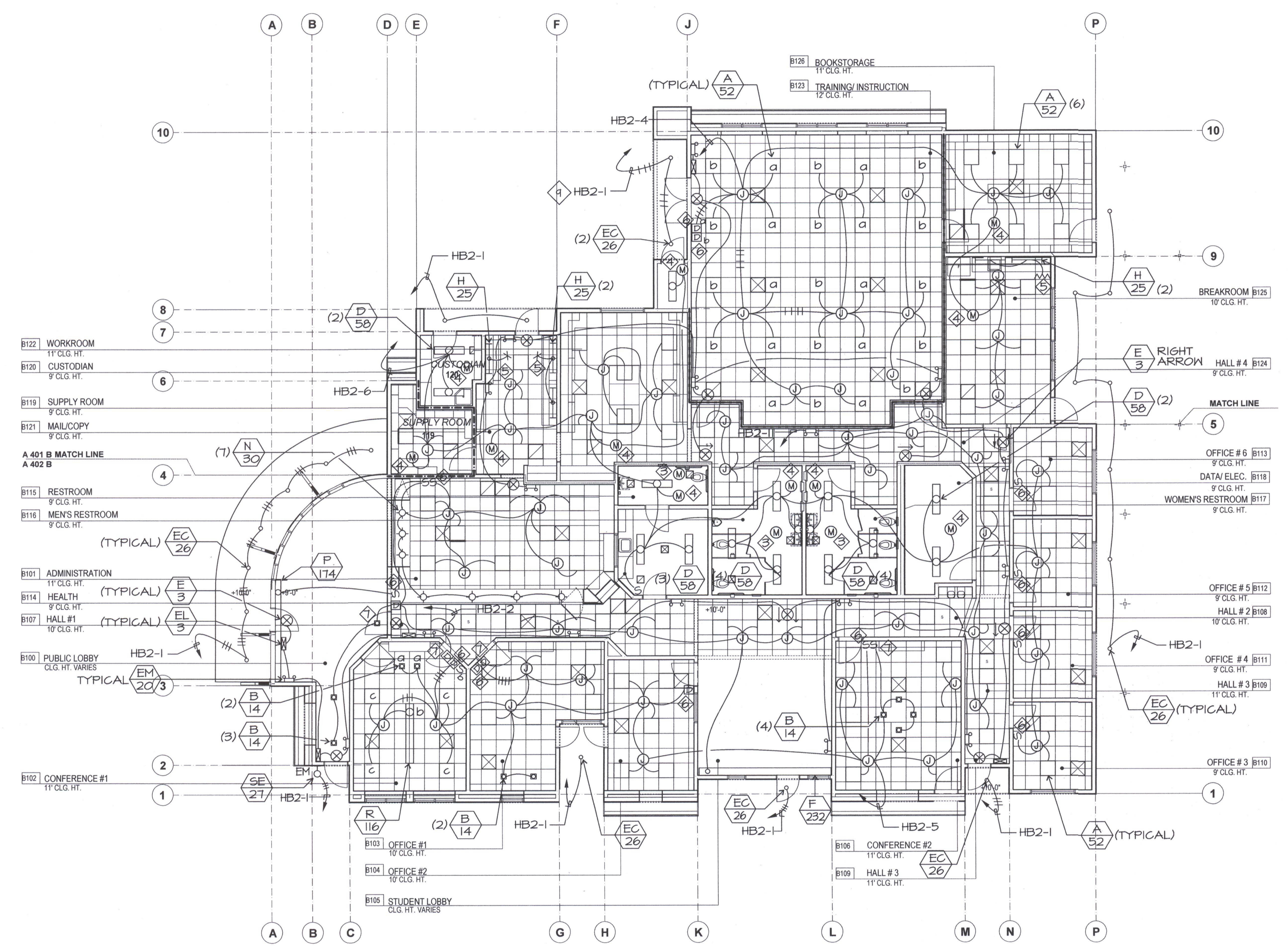
ANSWER:
John Maloney - JMPE - 11/2/12
1. Room B105 - Type F is 16ft long
2. Room B100 - Type P is 12ft long
3. Room B101 - Type P is 12ft long

REQUEST:
RFI Electric - 12/10/12
Reference Sheets A131B & E132B
1. Per the Electrical Plan for Building B, there is (1) Type B light fixture that is to be installed just outside door B108. However, this light fixture is not shown on the Architectural Plan for Building B. Which layout is correct? Please advise.
2. Per the Architectural Plan for Building B, there are (5) ceiling mount light fixtures shown to be installed along the radius, just off Gridline B, in Room B100. However, these (5) light fixtures are not shown on the Electrical Plan for Building B. Are these light fixtures required? If so, what type of light fixtures are they? Please advise.

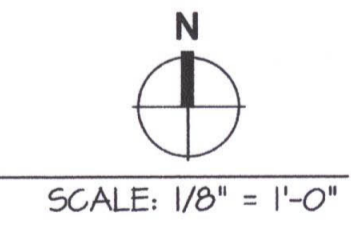
ANSWER:
Joe Covington - CMA - 12/11/12
1. Type B' fixture to be relocated per Item #2.
2. At Room B100 - Other (5), only one Type B' fixture to be relocated to Room 100. Add one Type A' fixture per attachment. At Room B100 - Public Lobby, omit 2 Type B' fixtures shown on A131B (2 shown), relocate 1 Type B' fixture from adjacent door B108 to soft, adjust location of attic access panel as required. See attachment.

REQUEST:
RFI Electric - 12/11/12
Reference Sheet A131B & E132B
1. Per the Electrical Plan for Building B, there is (1) Type B' light fixture that is to be installed just outside door B108. However, this light fixture is not shown on the Architectural Plan for Building B. Which layout is correct? Please advise.
2. Per the Architectural Plan for Building B, there are (5) ceiling mount light fixtures shown to be installed along the radius, just off Gridline B, in Room B100. However, these (5) light fixtures are not shown on the Electrical Plan for Building B. Are these light fixtures required? If so, what type of light fixtures are they? Please advise.

ANSWER:
Joe Covington - CMA - 12/11/12
1. Type B' fixture to be relocated per Item #2.
2. At Room B100 - Other (5), only one Type B' fixture to be relocated to Room 100. Add one Type A' fixture per attachment. At Room B100 - Public Lobby, omit 2 Type B' fixtures shown on A131B (2 shown), relocate 1 Type B' fixture from adjacent door B108 to soft, adjust location of attic access panel as required. See attachment.



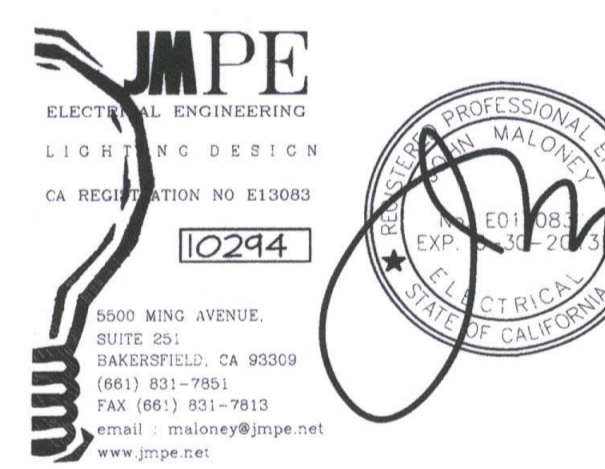
LIGHTING PLAN BUILDING B



NEW ELEMENTARY SCHOOL
9801 HIGHLAND KNOLLS DR
BAKERSFIELD
CALIFORNIA
93306

NEW MIDDLE SCHOOL
4115 VINELAND ROAD
BAKERSFIELD
CALIFORNIA
93306

FOR:
BAKERSFIELD CITY SCHOOL
DISTRICT
1300 BAKER STREET
BAKERSFIELD
CALIFORNIA
93305



MARK	DATE	DESCRIPTION

JOB NUMBER:
20101244
CAD DRAWING FILE:

DRAWN BY:
AC
CHECKED BY:
PH

CHECK AND VERIFY ALL DIMENSIONS BEFORE
PROCEEDING WITH THE WORK.
REPORT DISCREPANCIES TO THE ARCHITECT.

THE DRAWINGS, DEAS, AND DESIGNS
REPRESENTED ON THIS SHEET ARE THE
PROPERTY OF THE ARCHITECT.

COPYRIGHT
ORDIZ MELBY ARCHITECTS, INC. 2010

SHEET TITLE
**LIGHTING PLAN
BUILDING B**

SHEET IDENTIFICATION NUMBER

E-132B
SHEET OF

TEL: 068-102944/DATE: 12-27-11 AC