



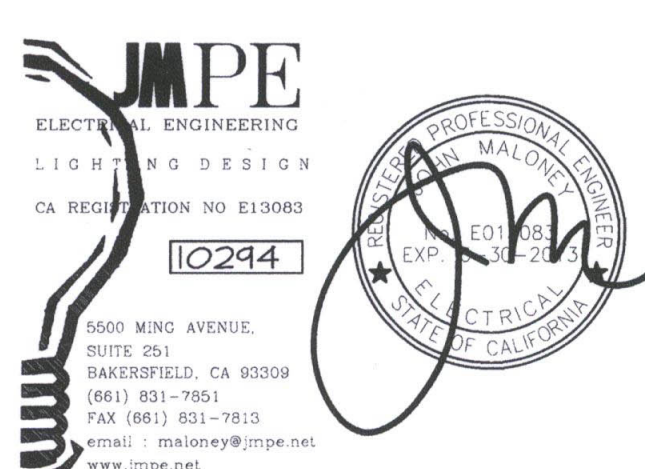
DANNY E. ORDIZ, AIA
ARCHITECT C-14,728
WILLIAM J. MELBY, AIA
ARCHITECT C-16,836
CONSULTANT

IDENTIFICATION STAMP
DIVISION OF STATE ARCHITECT
OFFICE OF REGULATION SERVICES
APPL. # - 02-112027
FILE # - 15-6
DATE JAN 20 2012

NEW ELEMENTARY SCHOOL
9801 HIGHLAND KNOLLS DR
BAKERSFIELD CALIFORNIA 93306

NEW MIDDLE SCHOOL
4115 VINELAND ROAD
BAKERSFIELD CALIFORNIA 93306

FOR:
BAKERSFIELD CITY SCHOOL DISTRICT
1300 BAKER STREET
BAKERSFIELD CALIFORNIA 93305



MARK	DATE	DESCRIPTION

△	
△	
△	
△	

JOB NUMBER:
20101244
CAD DRAWING FILE:

DRAWN BY:
AC
CHECKED BY:
PH

CHECK AND VERIFY ALL DIMENSIONS BEFORE PROCEEDING WITH THE WORK. REPORT DISCREPANCIES TO THE ARCHITECT.

THE DRAWINGS, IDEAS AND DESIGN REPRESENTED ON THIS SHEET ARE THE PROPERTY OF THE ARCHITECT.

COPYRIGHT
ORDIZ-MELBY ARCHITECTS, INC. 2010

SHEET TITLE
**FIRE ALARM PLAN
BUILDING B**

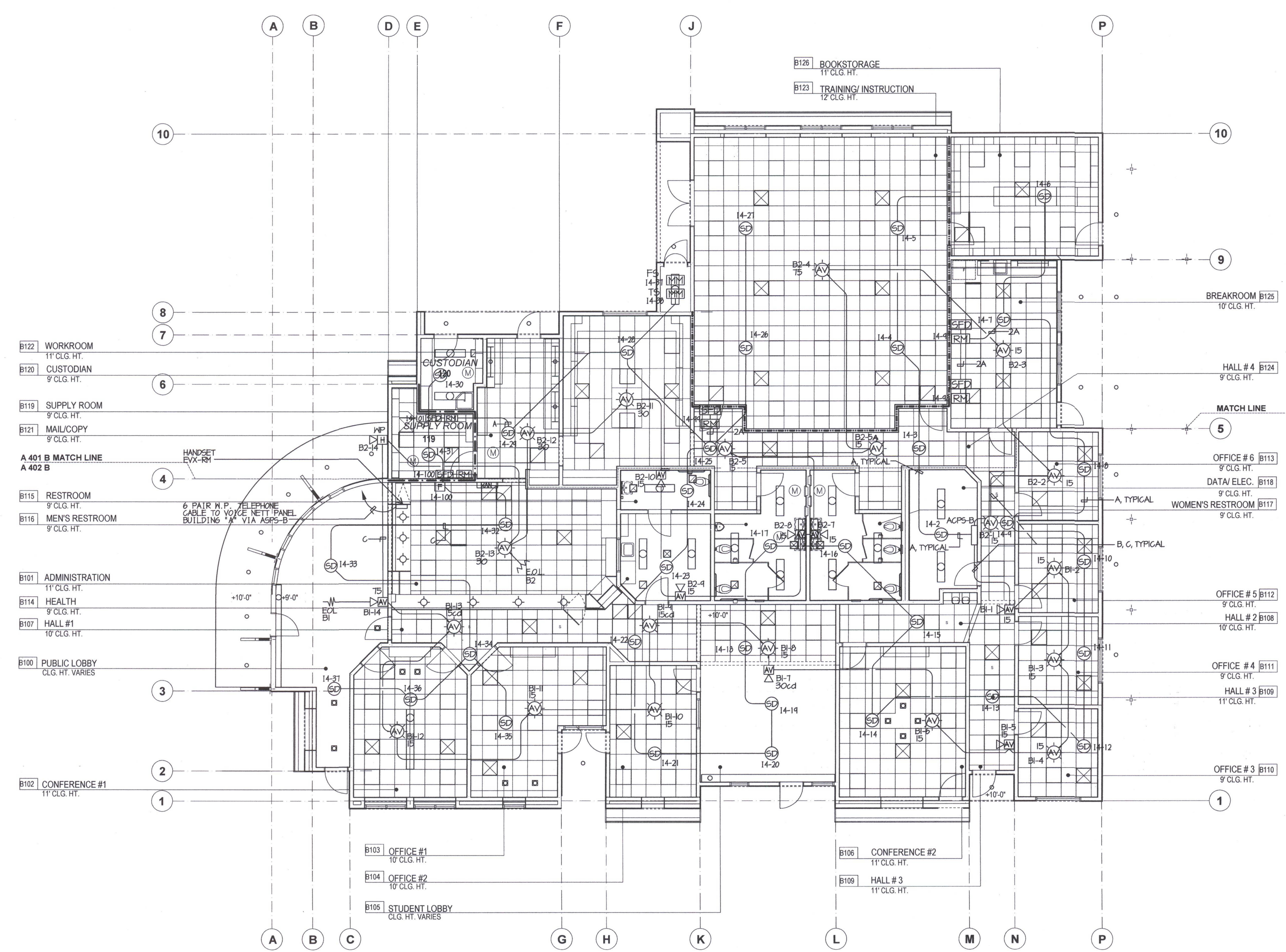
SHEET IDENTIFICATION NUMBER

E-131B
SHEET OF

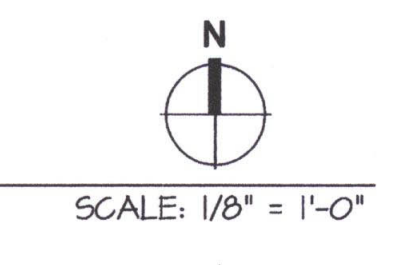
FIRE ALARM PLAN NOTES

- 1 FIRE ALARM CABLES SHOWN ARE DIAGRAMMATIC. INSTALL CABLES PARALLEL AND PERPENDICULAR TO WALLS AT HIGHEST LOCATION POSSIBLE. SUPPORT FIRE ALARM CABLE(S) EVERY 5' W/ RED J-HOOKS TYPICAL. FIRE ALARM CABLE(S) AND THEIR SUPPORT(S) SHALL BE INDEPENDENT FROM COMMUNICATION CABLE SUPPORT, TYPICAL.
- 2 INSTALL POWER BOOSTER PANEL FLUSH IN NEW WALL. ALL FIRE ALARM CABLES INSTALLED IN WALLS SHALL BE IN EMT CONDUIT.
- 3 REFER TO SHEET A101A FOR LOCATION OF FIRE BARRIERS. SEE DETAILS 'A', 'B' AND 'C' ON SHEET E-007 FOR FIRE BARRIER PENETRATION REQUIREMENTS.
- 4 AT WALLS ABLE TO RESIST THE PASSAGE OF SMOKE, CAULK ALL PENETRATIONS.

LINE TYPE	WALL TYPE
—	FIRE BARRIER WALL
- - -	SMOKE SEPARATION



FIRE ALARM PLAN BUILDING B



REQUEST:
SCM Electric - 12/26/12
Reference Sheet E-131B
The Electrical Plan for Building B shows a Fire Alarm speaker strobe to be installed in B109 (Hall #2) just outside of Room B112. Due to a conflict with the framing, this device cannot be installed in the location shown. Is the following solution acceptable? Please advise.
Contractor Solution: Move this device to the adjacent corridor wall (B108 - Hall #2) across from the existing fountain.

ANSWER:
Ed Hewitt - CMA - 1/21/13
Contractor proposed solution is acceptable.

RFI 231

CABLE LEGEND	
A	WESTPENN 975 (SLC)
B	WESTPENN 998 (STROBE)
C	WESTPENN 975 (SPEAKERS)