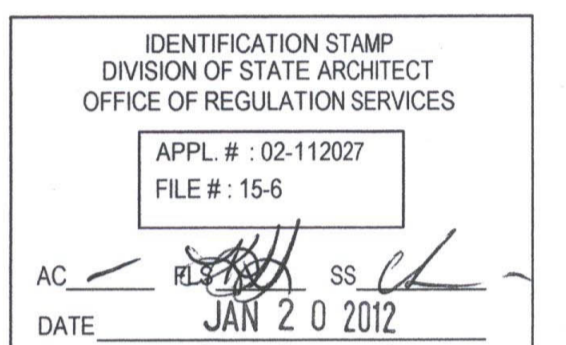




DANNY E. ORDIZ, AIA
ARCHITECT C-14,728
WILLIAM J. MELBY, AIA
ARCHITECT C-16,835
CONSULTANT



ELECTRICAL PLAN NOTES

- 1 VERIFY LOCATION OF RECEPTACLE FOR MECHANICAL CONTROL PANELS WITH MECHANICAL CONTRACTOR.
- 2 REFER TO ELECTRICAL SINGLE LINE DIAGRAM, SHEET E-001 AND ELECTRICAL SITE PLAN SHEET E-111 FOR FEEDER REQUIREMENTS.
- 3 VERIFY ELEVATION OF SPLASH WITH CABINET INSTALLER. RECEPTACLES SHALL BE ABOVE SPLASH WHERE THIS SYMBOL IS SHOWN, TYPICAL.
- 4 PROVIDE THREE 3/4" CONDUITS SPARE STUBBED INTO ACCESSIBLE ATTIC SPACE.
- 5 PROVIDE (2) DUPLEX RECEPTACLES AT FLOOR BOX LOCATIONS IN THIS ROOM. VERIFY LOCATION WITH RUBEN SOLIS, BAKERSFIELD CITY SCHOOL DISTRICT FACILITIES DIRECTOR, 661-631-5883 PRIOR TO INSTALLATION.
- 6 VERIFY WITH ARCHITECT THE EXACT LOCATION AND REQUIREMENTS OF MARQUEE SIGN PRIOR TO ROUGH IN.
- 7 PROVIDE #6 CU GROUND TO TELEPHONE BACKBOARD. CONNECT TO GROUND BUS PROVIDED BY OTHERS.
- 8 REFER TO SHEET A121B FOR LOCATION OF FIRE BARRIERS. SEE DETAILS 'A', 'B' AND 'C' ON SHEET E-007 FOR FIRE BARRIER PENETRATION REQUIREMENTS.
- 9 AT WALLS ABLE TO RESIST THE PASSAGE OF SMOKE, CAULK ALL PENETRATIONS.

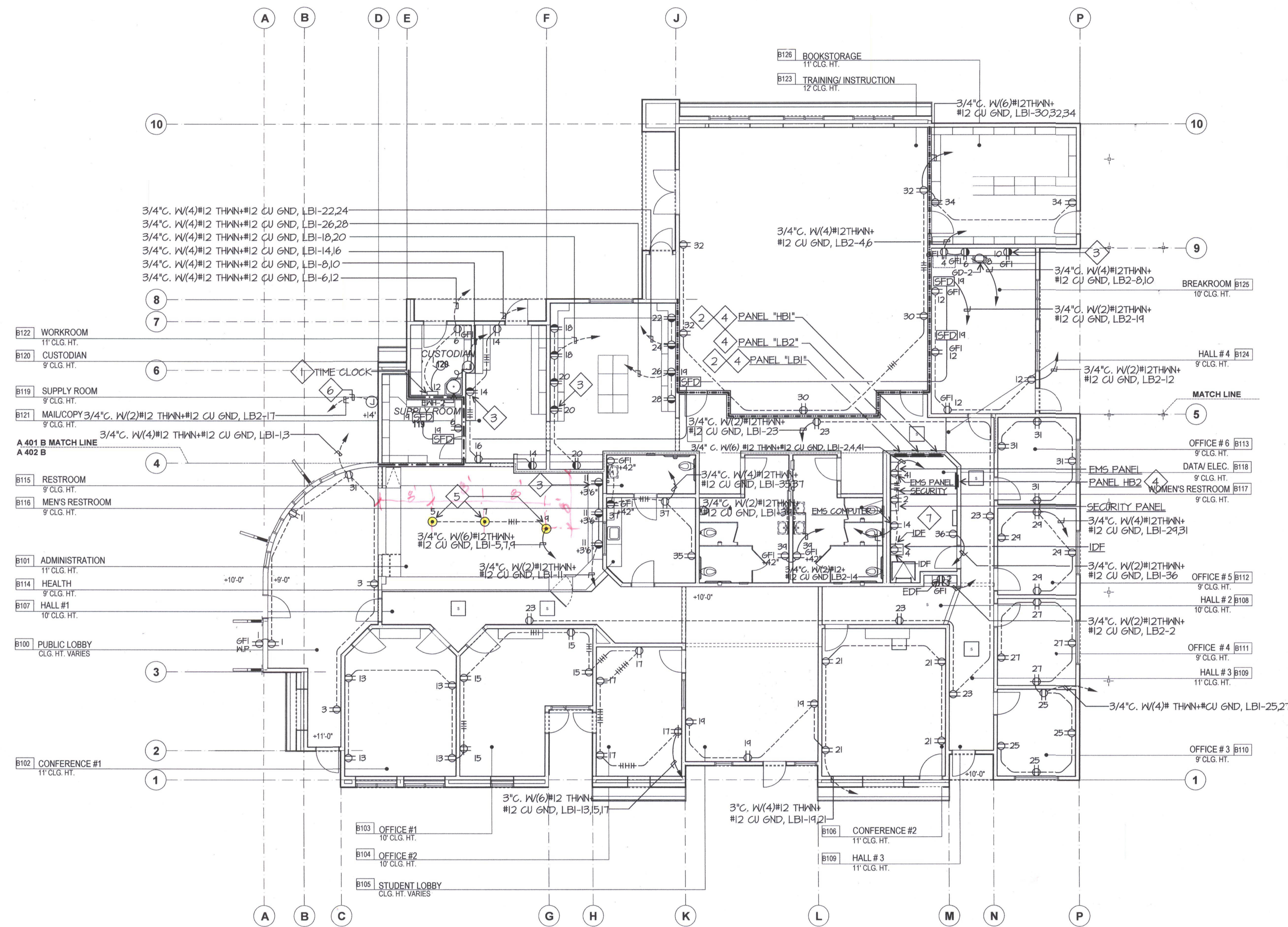
See RFI#66 for Floor Box Locations

LINE TYPE	WALL TYPE
---	FIRE BARRIER WALL
- - -	SMOKE SEPARATION

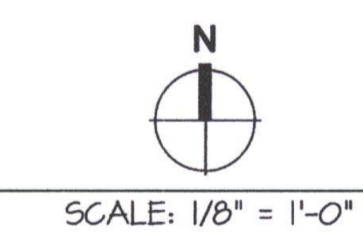
REQUEST:
RDM Electric - 12/28/12
Reference Sheet E121B & T21B
The Telecom Plan for Building B shows (2) data devices to be installed on the west wall and (2) data devices to be installed on the south wall of Room B112. However, the Electrical Plan does not show power devices to be installed in these same locations. Are power receptacles required at these locations? If so, please search the receptacle type, conduit/wire size, panel designation and circuit.

ANSWER:
John Maconey - JMPE - 1/9/13
Provide (2) Duplex Receptacles, connect to circuit LBI-1.

RFI 236



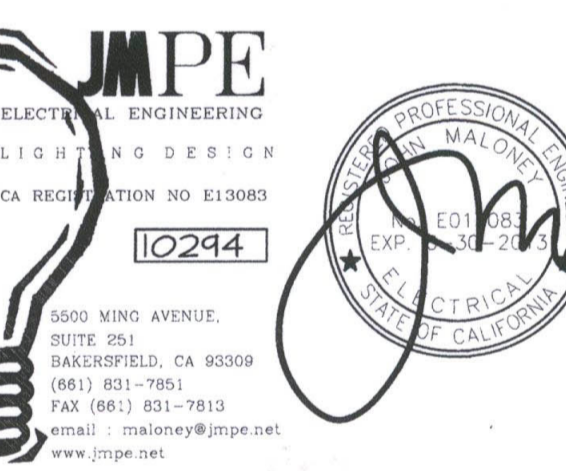
ELECTRICAL PLAN BUILDING B.



NEW ELEMENTARY SCHOOL
9801 HIGHLAND KNOLLS DR
BAKERSFIELD
CALIFORNIA
93306

NEW MIDDLE SCHOOL
4115 VINELAND ROAD
BAKERSFIELD
CALIFORNIA
93306

FOR:
BAKERSFIELD CITY SCHOOL
DISTRICT
1300 BAKER STREET
BAKERSFIELD
CALIFORNIA
93305



MARK	DATE	DESCRIPTION

JOB NUMBER
20101244
CAD DRAWING FILE:

DRAWN BY:
AC
CHECKED BY:
PH

CHECK AND VERIFY ALL DIMENSIONS BEFORE
PROCEEDING WITH THE WORK.
REPORT DISCREPANCIES TO THE ARCHITECT.

THE DRAWINGS, IDEAS AND DESIGNS
REPRESENTED ON THIS SHEET ARE THE
PROPERTY OF THE ARCHITECT.

COPYRIGHT
ORDIZ MELBY ARCHITECTS, INC. 2010

SHEET TITLE
**ELECTRICAL PLAN
BUILDING B**

SHEET IDENTIFICATION NUMBER
E-121B
SHEET OF