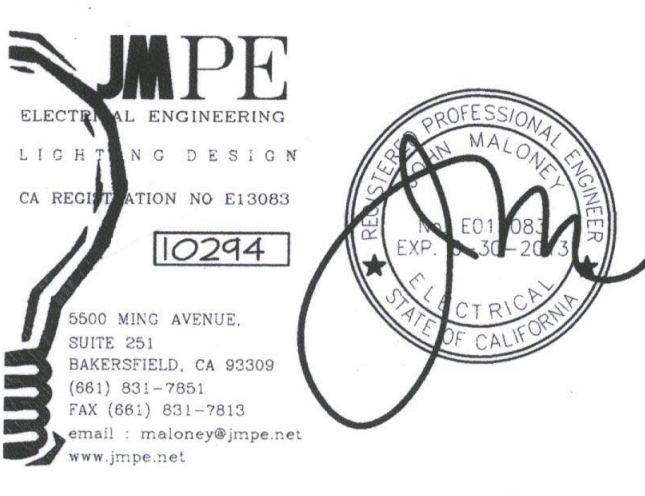


IDENTIFICATION STAMP
 DIVISION OF STATE ARCHITECT
 OFFICE OF REGULATION SERVICES
 APPL # 10212027
 FILE # 15-8
 AC: [Signature] SS: GR
 DATE JAN 20 2012

NEW ELEMENTARY SCHOOL
 9801 HIGHLAND KNOLLS DR
 BAKERSFIELD CALIFORNIA 93306

NEW MIDDLE SCHOOL
 4115 VINLAND ROAD
 BAKERSFIELD CALIFORNIA 93306

FOR:
BAKERSFIELD CITY SCHOOL DISTRICT
 1300 BAKER STREET
 BAKERSFIELD CALIFORNIA 93305



MARK	DATE	DESCRIPTION
△		
△		
△		
△		

JOB NUMBER: 2011244
 CAD DRAWING FILE: 1244-BLDG A (MULTIPURPOSE) CD.dwg
 DRAWN BY: AC
 CHECKED BY: PH
 CHECK AND VERIFY ALL DIMENSIONS BEFORE PROCEEDING WITH THE WORK. REPORT DISCREPANCIES TO THE ARCHITECT.
 THE DRAWINGS, IDEAS, AND DESIGNS REPRESENTED ON THIS SHEET ARE THE PROPERTY OF THE ARCHITECT.
 COPYRIGHT © 2011
 ORDIZ MELBY ARCHITECTS, INC. 2010
SHEET TITLE
KITCHEN ELECTRICAL PLAN BUILDING A

SHEET IDENTIFICATION NUMBER
E-122A
 SHEET OF

KITCHEN ELECTRICAL PLAN NOTES

- REFER TO SHEET A101A FOR LOCATION OF FIRE BARRIERS. SEE DETAILS 'A', 'B' AND 'C' ON SHEET E-007 FOR FIRE BARRIER PENETRATION REQUIREMENTS.
- CONNECT GARBAGE DISPOSERS, SWITCHES, SOLENOID VALVES PER MANUFACTURERS INSTRUCTIONS.
- REFER TO KITCHEN PLAN, SHEET K-2 FOR ELEVATIONS OF RECEPTACLES TYPICAL.
- REFER TO SHEET A101A FOR LOCATION OF FIRE BARRIERS. SEE DETAILS 'A', 'B' AND 'C' ON SHEET E-007 FOR FIRE BARRIER PENETRATION REQUIREMENTS.
- AT WALLS ABLE TO RESIST THE PASSAGE OF SMOKE, CAULK ALL PENETRATIONS.

LINE TYPE	WALL TYPE
④	FIRE BARRIER WALL
⑩	SMOKE SEPARATION

REQUEST:
 RDM Electric - 7/12/12
 Reference Sheets K-2, K-5, K-6 & E-122A
RFI 91

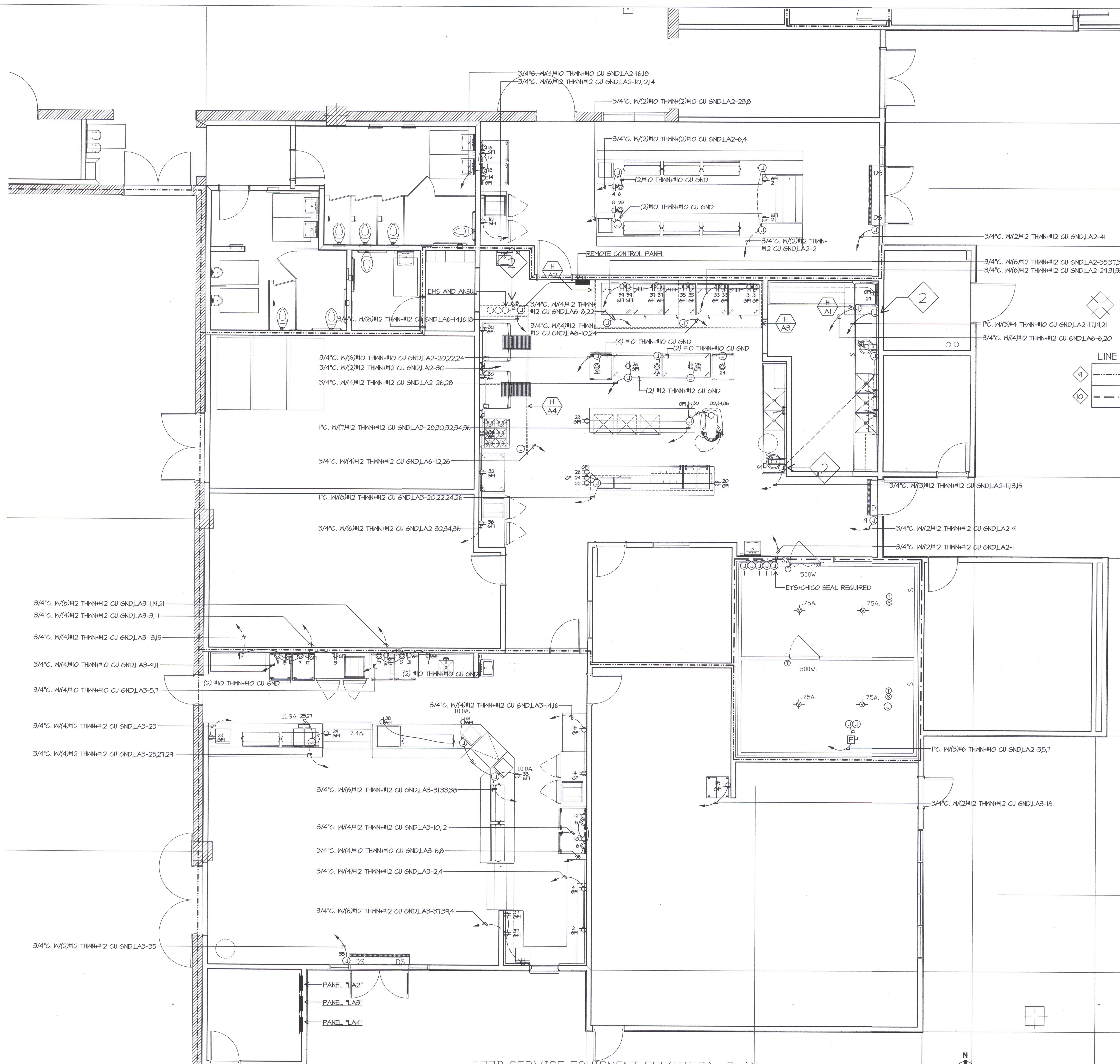
Both the Kitchen and Electrical Plans show receptacles to be installed at kitchen counters #17, 22, 36, 37, 43, 44 and 45. These are freestanding kitchen counters with no back or front panels. Please provide a detail that shows how to mount these receptacles.

ANSWER:
 See the attached sketch for a suggestion. The electrical is provided by the job of electrical. Please refer to the Electrical Engineer.
 CND by BE: 2/13/2012

REQUEST:
 RDM Electric - 3/19/13
 Reference Sheet E-122A
RFI 284

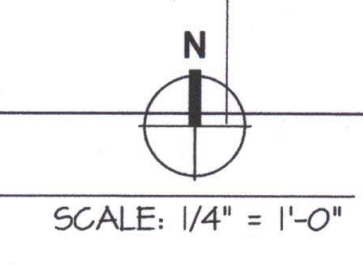
The electrical plan for Building A shows a remote control panel to be installed on the north wall of Room A-123. Room A-123 is to be used for fire suppression. Please provide the following information for this panel: what panel requirements are needed, who is to provide it, what does it control and in it to be surface mounted or recessed?

ANSWER:
 See sheet E-124 - 3/25/13
 Remote panel is part of the fire suppression system. Install as directed by electrical sheets and coordinate with fire suppression system installer.



KITCHEN ELECTRICAL PLAN BUILDING A

FOOD SERVICE EQUIPMENT ELECTRICAL PLAN



J:\E\JOB\10244\DATE\12-27-11 AC