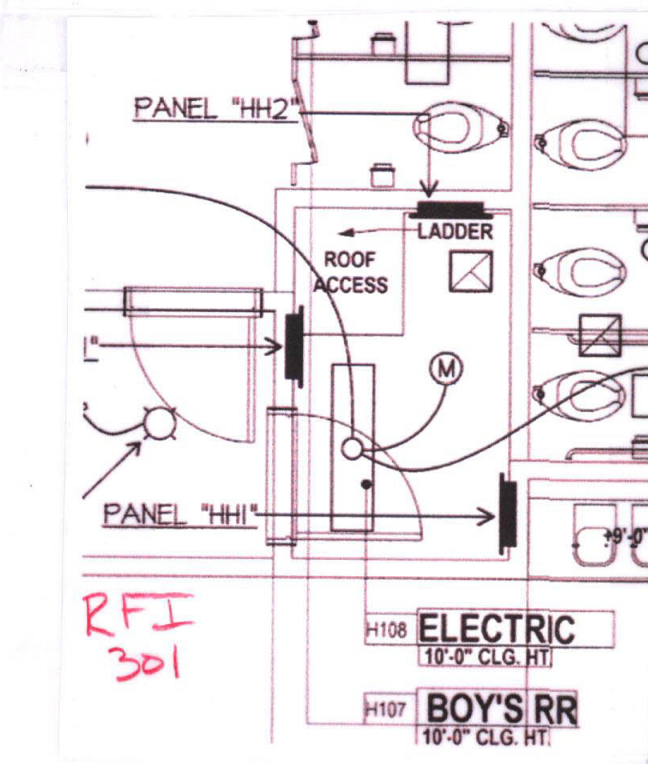


REQUEST:
 Journey AC - 41113
 Please reference Sheet M-131H Room H105. After coordination meeting on site it has been determined that there is not enough space for the EMS panel shown on Sheet M-131H due to electrical, data and fire alarm panels. Please provide new location for EMS panel.

ANSWER:
 Joe Covington - OMA - 41713
 As discussed at a site visit and reviewed by the ICR, the EMS panel may be placed above the telephone backboard. (This location was designated on original plans where Panel H12 is indicated)



ORDIZ MELBY
 ARCHITECTS, INC.
 5500 MING AVENUE SUITE 280
 BAKERSFIELD, CALIFORNIA 93309
 TELEPHONE (861) 832-6258
 FACSIMILE (861) 832-4291

IDENTIFICATION STAMP
 DIVISION OF STATE ARCHITECT
 OFFICE OF REGULATION SERVICES
 APPL. #: 02-112027
 FILE #: 15-6
 DATE JAN 20 2012
 PTN # 63321-112

NEW ELEMENTARY SCHOOL
 9801 HIGHLAND KNOLLS DR
 BAKERSFIELD CALIFORNIA 93306

NEW MIDDLE SCHOOL
 4115 VINELAND ROAD
 BAKERSFIELD CALIFORNIA 93306

FOR:
BAKERSFIELD CITY SCHOOL DISTRICT
 1300 BAKER STREET
 BAKERSFIELD CALIFORNIA 93305

MARK	DATE	DESCRIPTION
△		
△		
△		
△		

JOB NUMBER:
 200101244
CAD DRAWING FILE:
 DRAWN BY: KW
 CHECKED BY: MB
 CHECK AND VERIFY ALL DIMENSIONS BEFORE PROCEEDING WITH THE WORK. REPORT DISCREPANCIES TO THE ARCHITECT.
 THE DRAWINGS, IDEAS AND DESIGN REPRESENTED ON THIS SHEET ARE THE PROPERTY OF THE ARCHITECT.
 COPYRIGHT
 ORDIZMELBY ARCHITECTS, INC. 2010
SHEET TITLE

MECHANICAL PLAN BUILDING H

SHEET IDENTIFICATION NUMBER
 M-131H

MECHANICAL PLAN - BUILDING H
 SCALE: 1/4"=1'-0"

MDC
 MECHANICAL DESIGN CONCEPTS, INC.
 5500 Ming Ave, Suite 251 Bakersfield, CA 93309
 Tel #: (661) 397-2114 Fax #: (661) 397-2116
 Job: 09091 P1: 1-11-12

