

IDENTIFICATION STAMP
DIVISION OF STATE ARCHITECT
OFFICE OF REGULATION SERVICES
APPL # 02-112027
FILE # 15-6
AC - [Signature]
DATE JAN 2 0 2012
PTN # 63321-112

NEW ELEMENTARY SCHOOL
9801 HIGHLAND KNOLLS DR
BAKERSFIELD CALIFORNIA 93306
NEW MIDDLE SCHOOL
4115 VINELAND ROAD
BAKERSFIELD CALIFORNIA 93306

FOR:
BAKERSFIELD CITY SCHOOL DISTRICT
1300 BAKER STREET
BAKERSFIELD CALIFORNIA 93305

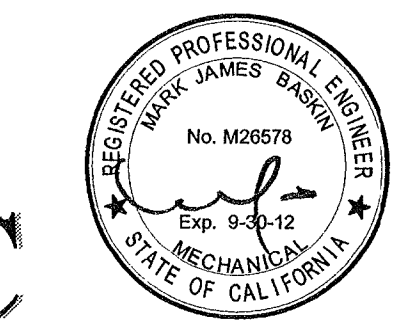
MARK	DATE	DESCRIPTION
△		
△		
△		
△		

JOB NUMBER: 200101244
CAD DRAWING FILE:
DRAWN BY: KW
CHECKED BY: MB
CHECK AND VERIFY ALL DIMENSIONS BEFORE PROCEEDING WITH THE WORK. REPORT DISCREPANCIES TO THE ARCHITECT.
THE DRAWINGS, IDEAS AND DESIGNS REPRESENTED ON THIS SHEET ARE THE PROPERTY OF THE ARCHITECT.
COPYRIGHT: ORDIZMELBY ARCHITECTS, INC. 2010
SHEET TITLE

MECHANICAL PLAN - BUILDING B

SHEET IDENTIFICATION NUMBER
M-131B

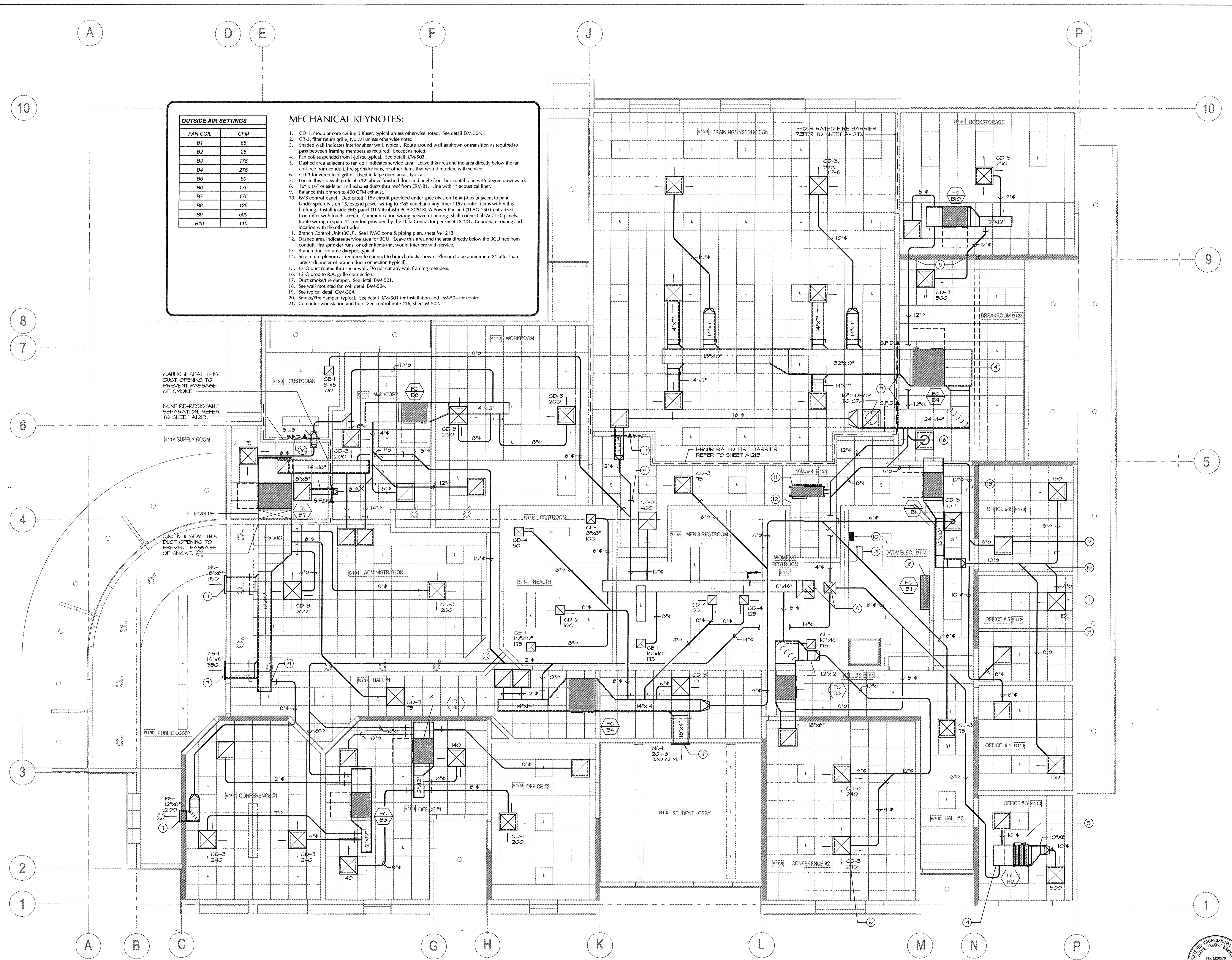
MDC
MECHANICAL DESIGN CONCEPTS, INC.
5500 Ming Ave, Suite 251 Bakersfield, CA 93309
Tel #: (661) 397-2114 FAX #: (661) 397-2116
Job: 09091 Pjt: 1-11-12



OUTSIDE AIR SETTINGS	
FAN COIL	CFM
B1	65
B2	25
B3	175
B4	275
B5	80
B6	175
B7	175
B8	125
B9	500
B10	110

MECHANICAL KEYNOTES:

- CD-1, modular core ceiling diffuser, typical unless otherwise noted. See detail EM-504.
- CR-3, filter return grille, typical unless otherwise noted.
- Shaded wall indicates interior shear wall, typical. Route around wall as shown or transition as required to pass between framing members as required. Except as noted.
- Fan coil suspended from joists, typical. See detail IM-503.
- Dashed area adjacent to fan coil indicates service area. Leave this area and the area directly below the fan coil free from conduit, fire sprinkler runs, or other items that would interfere with service.
- CD-3, louvered face grille. Used in large open areas, typical.
- Locate this sidewall grille at +12' above finished floor and angle front horizontal blades 45 degree downward.
- 16" x 16" outside air and exhaust ducts thru roof from ERV-B1. Line with 1" acoustical liner.
- Balance this branch to 400 CFM exhaust.
- EMS control panel. Dedicated 115v circuit provided under spec division 16 at J-box adjacent to panel. Under spec division 15, extend power wiring to EMS panel and any other 115v control items within this building. Install inside EMS panel (1) Mitsubishi PCA-SC51KUA Power Pac and (1) AG-150 Centralized Controller with touch screen. Communication wiring between buildings shall connect all AG-150 panels. Route wiring in spare 1" conduit provided by the Data Contractor per sheet TS-101. Coordinate routing and location with the other trades.
- Branch Control Unit (BCU). See HVAC zone & piping, sheet M-121B.
- Dashed area indicates service area for BCU. Leave this area and the area directly below the BCU free from conduit, fire sprinkler runs, or other items that would interfere with service.
- Branch duct volume damper, typical.
- Size return plenums as required to connect to branch ducts shown. Plenum to be a minimum 2" taller than largest diameter of branch duct connection (typical).
- 12"Ø duct routed thru shear wall. Do not cut any wall framing members.
- 12"Ø drop to R.A. grille connection.
- Duct smokefire damper. See detail BM-501.
- See wall mounted fan coil detail BM-504.
- See typical detail GM-504.
- Smokefire damper, typical. See detail BM-501 for installation and UM-504 for control.
- Computer workstation and hub. See control note #16, sheet M-502.



MECHANICAL PLAN - BUILDING B
SCALE: 1/4"=1'-0"