

IDENTIFICATION STAMP  
 DIVISION OF STATE ARCHITECT  
 OFFICE OF REGULATION SERVICES  
 APPL. #02-112027  
 FILE # 15-6  
 AC [Signature] SS [Signature]  
 DATE 1/19/12  
 PTN # 63321-112

NEW ELEMENTARY SCHOOL  
 9801 HIGHLAND KNOLLS DR  
 BAKERSFIELD CALIFORNIA 93306  
 NEW MIDDLE SCHOOL  
 4115 VINELAND ROAD  
 BAKERSFIELD CALIFORNIA 93306

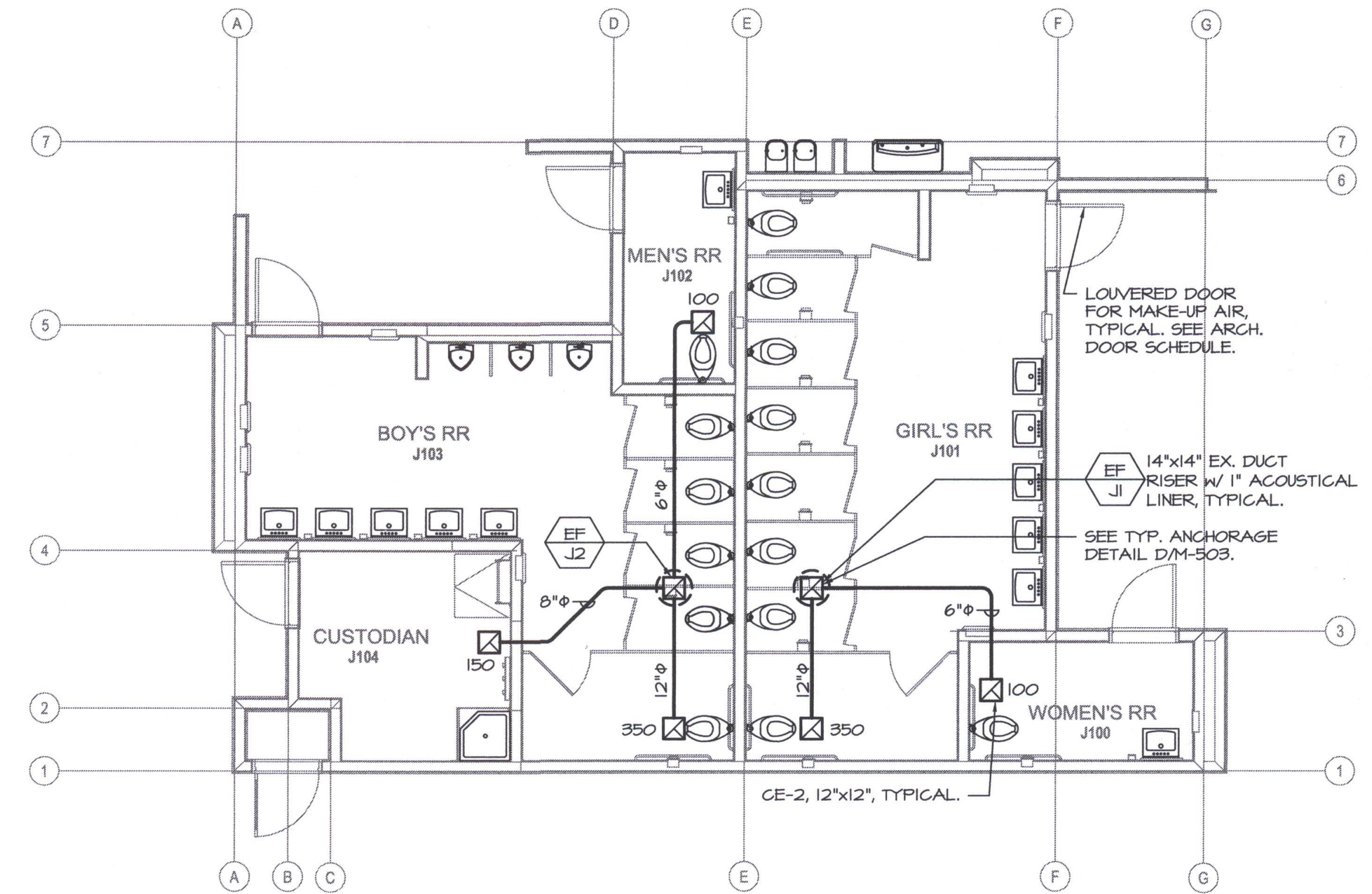
FOR:  
**BAKERSFIELD CITY SCHOOL DISTRICT**  
 1300 BAKER STREET  
 BAKERSFIELD CALIFORNIA 93305

MARK	DATE	DESCRIPTION
△		
△		
△		
△		

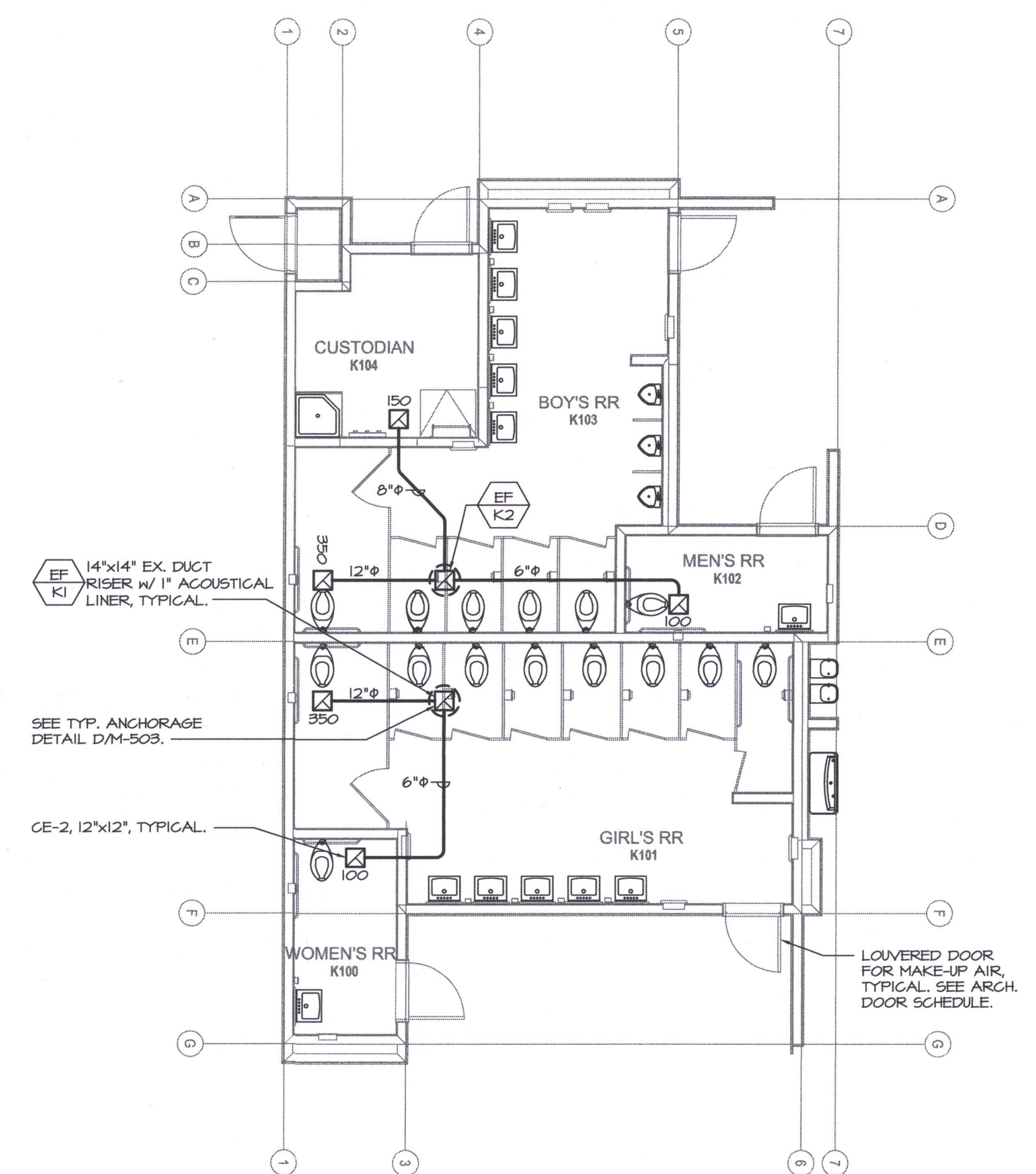
200101244  
 CAD DRAWING FILE:  
 DRAWN BY: KW  
 CHECKED BY: MB  
 CHECK AND VERIFY ALL DIMENSIONS BEFORE PROCEEDING WITH THE WORK. REPORT DISCREPANCIES TO THE ARCHITECT.  
 THE DRAWING, IDEAS, AND DESIGNS REPRESENTED ON THIS SHEET ARE THE PROPERTY OF THE ARCHITECT.  
 COPYRIGHT © 2010  
 ORDIZ-MELBY ARCHITECTS, INC. 2010  
 SHEET TITLE

**MECHANICAL PLANS - BUILDINGS J, K, Q & R**

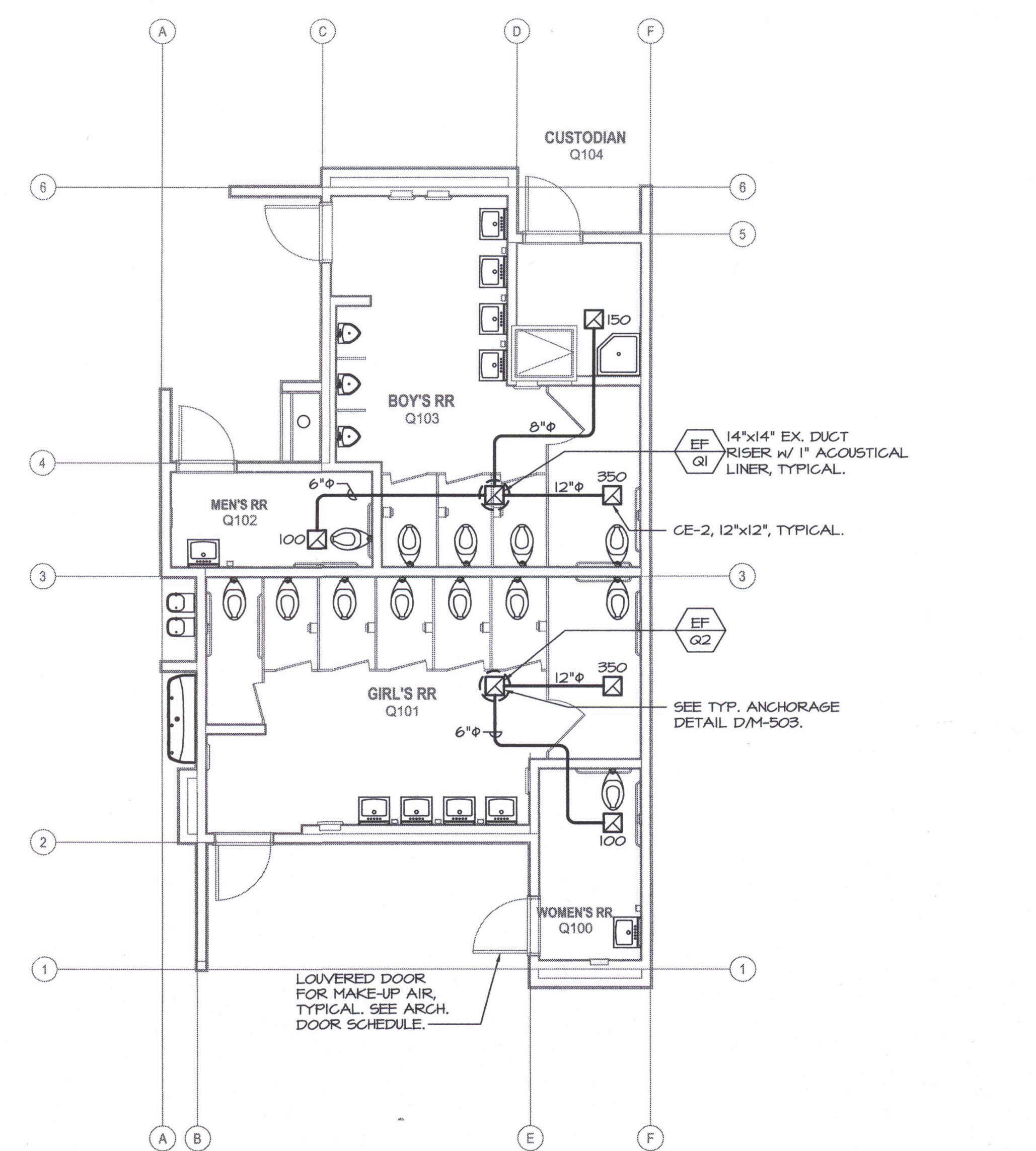
SHEET IDENTIFICATION NUMBER  
**M-121JKQR**



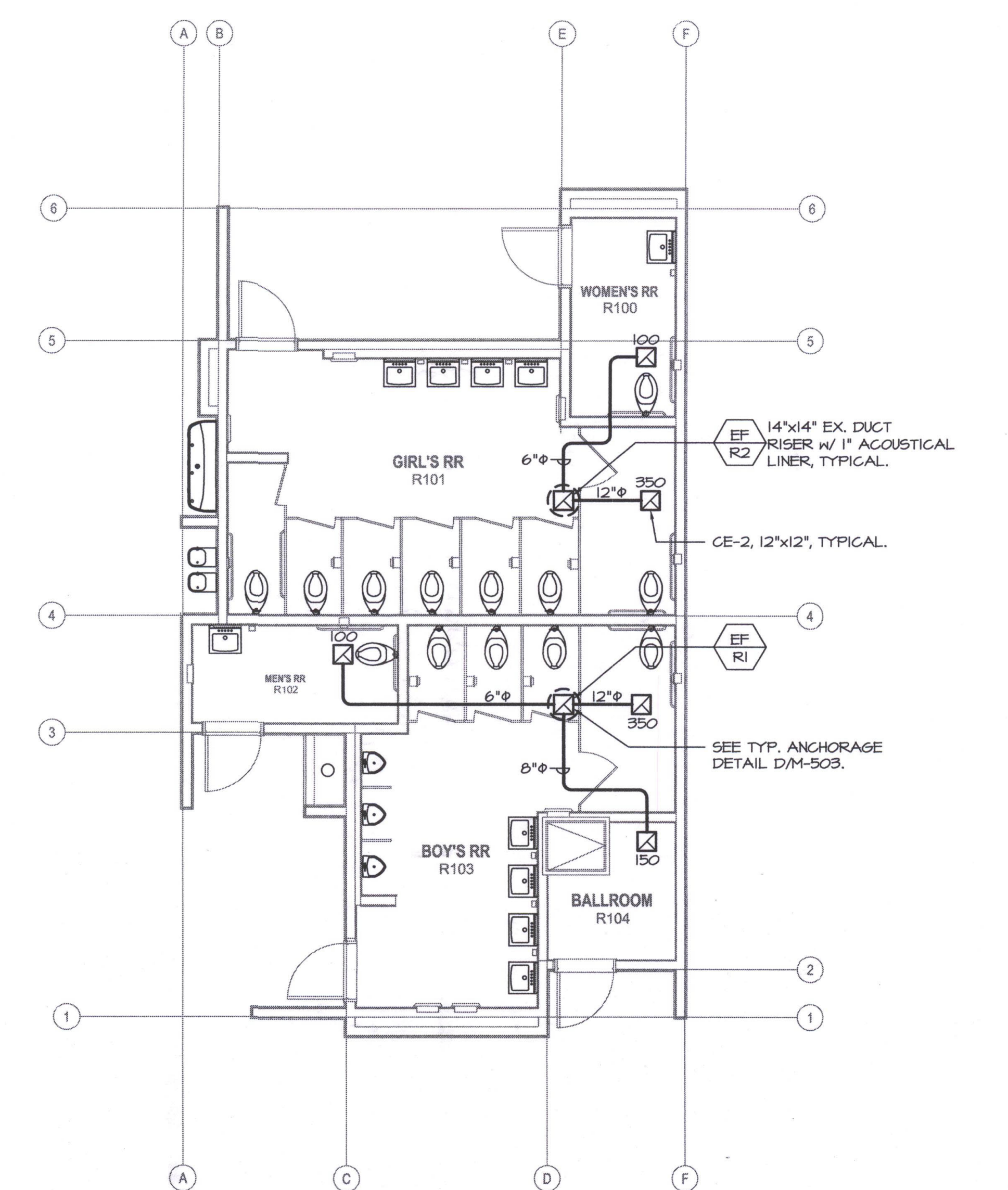
**MECHANICAL PLAN - BUILDING J**  
 SCALE: 3/16"=1'-0"



**MECHANICAL PLAN - BUILDING K**  
 SCALE: 3/16"=1'-0"



**MECHANICAL PLAN - BUILDING Q**  
 SCALE: 3/16"=1'-0"



**MECHANICAL PLAN - BUILDING R**  
 SCALE: 3/16"=1'-0"

Item #26: Refer to Mechanical Drawings M121JKQR.  
 Add: Additional mechanical equipment as illustrated on attached drawings  
 M121JKQR.1, M121JKQR.2, M121JKQR.3, & M121JKQR.4

**MDC**  
 MECHANICAL DESIGN CONCEPTS, INC.  
 5500 Ming Ave, Suite 251 Bakersfield, CA 93309  
 Tel #: (661) 397-2114 FAX #: (661) 397-2116  
 Job: 09091

