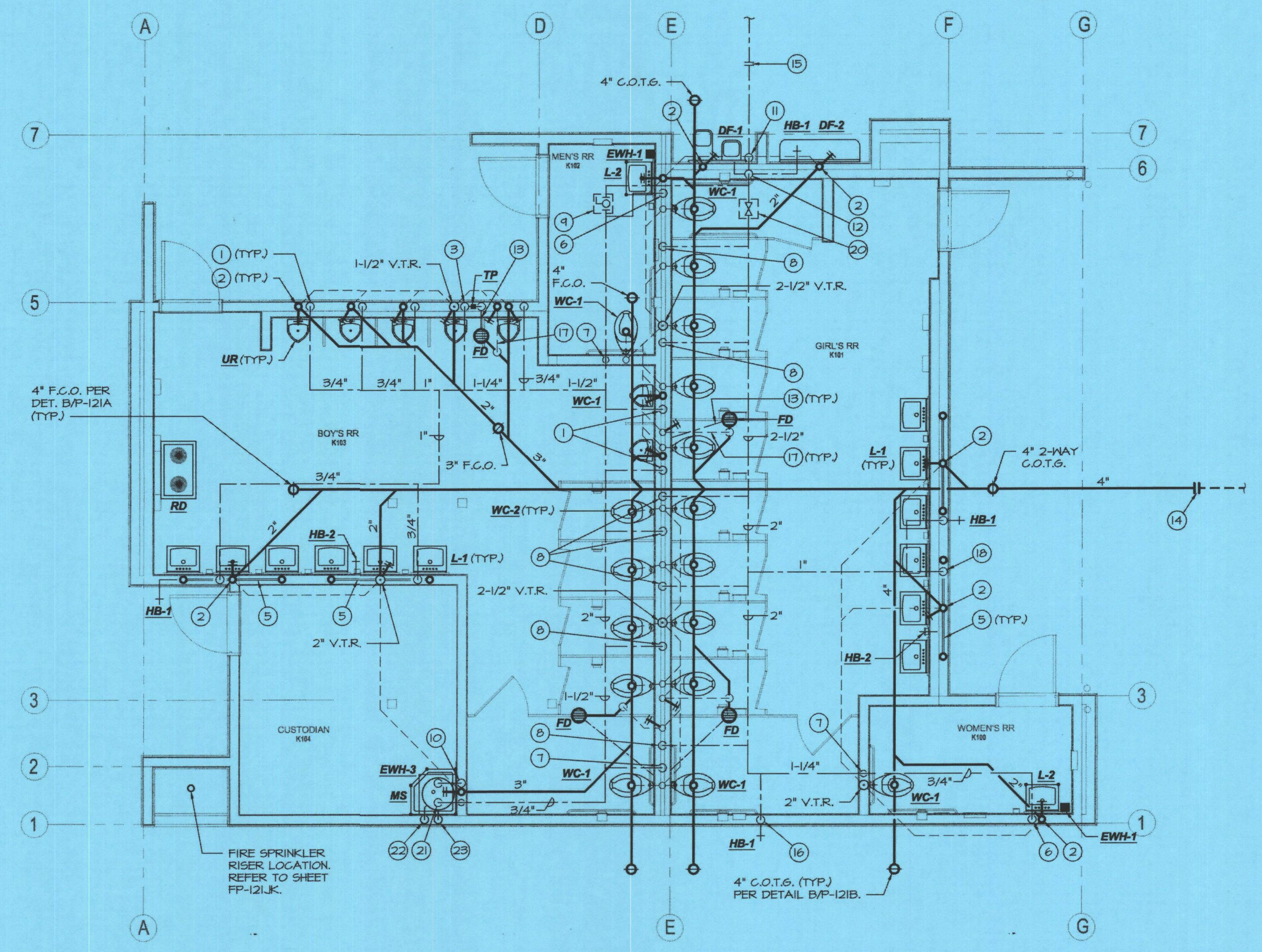


**PLUMBING FLOOR PLAN - BUILDING J**  
SCALE: 1/4"=1'-0"



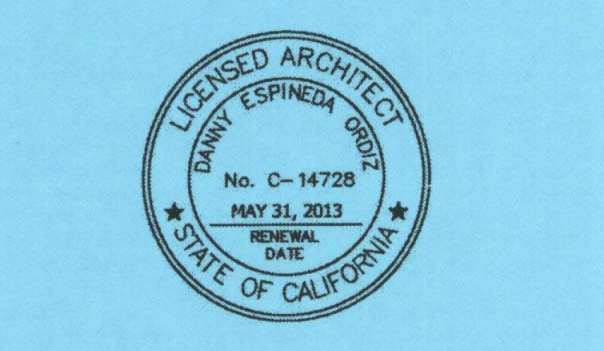
**PLUMBING FLOOR PLAN - BUILDING K**  
SCALE: 1/4"=1'-0"

**PLUMBING KEYNOTES:**

1. 3/4" C.W. down to urinal w/"Shoktrol".
2. 2" W., 2" W.C.O., 1 1/2" V.O. (or V.T.R. - see plan)
3. 3/4" C.W. down to Urinal, 1/2" on to trap primer, "Shoktrol".
4. 3/4" C.W. down to header w/3/4" to H.B., 1/2" to each of 3 lav's.
5. 1 1/2" trap arm
6. 3/4" C.W. down w/ 1/2" to E.W.H. and lav. (provide 1/2" H.W. from E.W.H. up to lav.)
7. 1 1/2" C.W. down w/"Shoktrol", reduce to 1" @ flush valve.
8. 1 1/2" C.W. down to header w/ 1 1/2" to each W.C., "Shoktrol", reduce to 1" @ flush valve.
9. 2" isolation ball valve above ceiling with 12"x12" S.S. access door.
10. W" H.W./C.W. down, 3" W., 3" W.C.O., 1 1/2" V.O. or V.T.R. (see plan).
11. 2 1/2" C.W. up to 12" above grade with gate valve, enter wall and rise.
12. 2 1/2" C.W. up to attic w/ 3/4" taps @ fixture height for D.F.'s and H.B.
13. 1/2" trap primer line below slab.
14. P.O.C. 4" S.A.W. to 5' out, see Civil plans for continuation.
15. P.O.C. 2 1/2" C.W. to 5' out, see Civil plans for continuation.
16. 3/4" C.W. down to H.B.
17. 2" V.O. below slab.
18. 3/4" C.W. down to header w/ 3/4" to H.B., 1/2" to each of 3 lav's.
19. 1" C.W. down to header w/ 3/4" to H.B., 1/2" to each of 5 lav's.
20. 2 1/2" isolation gate valve above ceiling with 12"x12" S.S. access door
21. 3/4" C.W. to / H.W. from E.W.H.
22. 3/4" T.&P. relief to spill @ M.S.
23. 1" secondary pan drain to spill @ M.S.
24. 1" C.W. down to header w/ 3/4" to H.B. & 3/4" to D.F.'s.

**C.W. CALC.'s. (BUILDING J & K)**

14 W.C.	●	5 FIXTURE UNITS	=	45
12 LAV's	●	1 FIXTURE UNIT	=	12
1 M.S.	●	3 FIXTURE UNITS	=	3
1 H.B.	●	25 FIXTURE UNITS	=	25
5 H.B.'s	●	1 FIXTURE UNIT	=	5
3 UR.'s	●	4 FIXTURE UNITS	=	12
1 D.F.	●	1 FIXTURE UNIT	=	1
<b>TOTAL</b>			<b>=</b>	<b>103</b>
75 GPM = 2-1/2" @ 5.4 F.P.S. / 2.4 P.S.I. LOSS / 100'				



DANNY E. ORDIZ, AIA  
ARCHITECT C-14,728  
WILLIAM J. MELBY, AIA  
ARCHITECT C-16,835

IDENTIFICATION STAMP  
DIVISION OF STATE ARCHITECT  
OFFICE OF REGULATION SERVICES  
APPL. #02-112027  
FILE #: 15-6  
AC FL5 SS  
DATE  
PTN # 63321-112

**NEW ELEMENTARY SCHOOL**  
9801 HIGHLAND KNOLLS DR  
BAKERSFIELD CALIFORNIA 93306

**NEW MIDDLE SCHOOL**  
4115 VINELAND ROAD  
BAKERSFIELD CALIFORNIA 93306

FOR:  
**BAKERSFIELD CITY SCHOOL DISTRICT**  
1300 BAKER STREET  
BAKERSFIELD CALIFORNIA 93305

MARK	DATE	DESCRIPTION
△	2-7-12	REVISION REPLACE SHEET
△		
△		
△		

JOB NUMBER:  
**200101244**  
CAD DRAWING FILE:  
**KW**  
DRAWN BY:  
**MB**  
CHECKED BY:  
**MB**  
CHECK AND VERIFY ALL DIMENSIONS BEFORE PROCEEDING WITH THE WORK. REPORT DISCREPANCIES TO THE ARCHITECT.  
THE DRAWINGS, IDEAS, AND DESIGNS REPRESENTED ON THIS SHEET ARE THE PROPERTY OF THE ARCHITECT.  
COPYRIGHT  
ORDIZ MELBY ARCHITECTS, INC. 2010  
SHEET TITLE

**PLUMBING FLOOR PLAN BUILDING J & K**

SHEET IDENTIFICATION NUMBER  
**P-121JK**

**MDC**  
MECHANICAL DESIGN CONCEPTS, INC.  
5500 Ming Ave, Suite 251 Bakersfield, CA 93309  
Tel #: (661) 397-2114 Fax #: (661) 397-2116  
Job: 09091