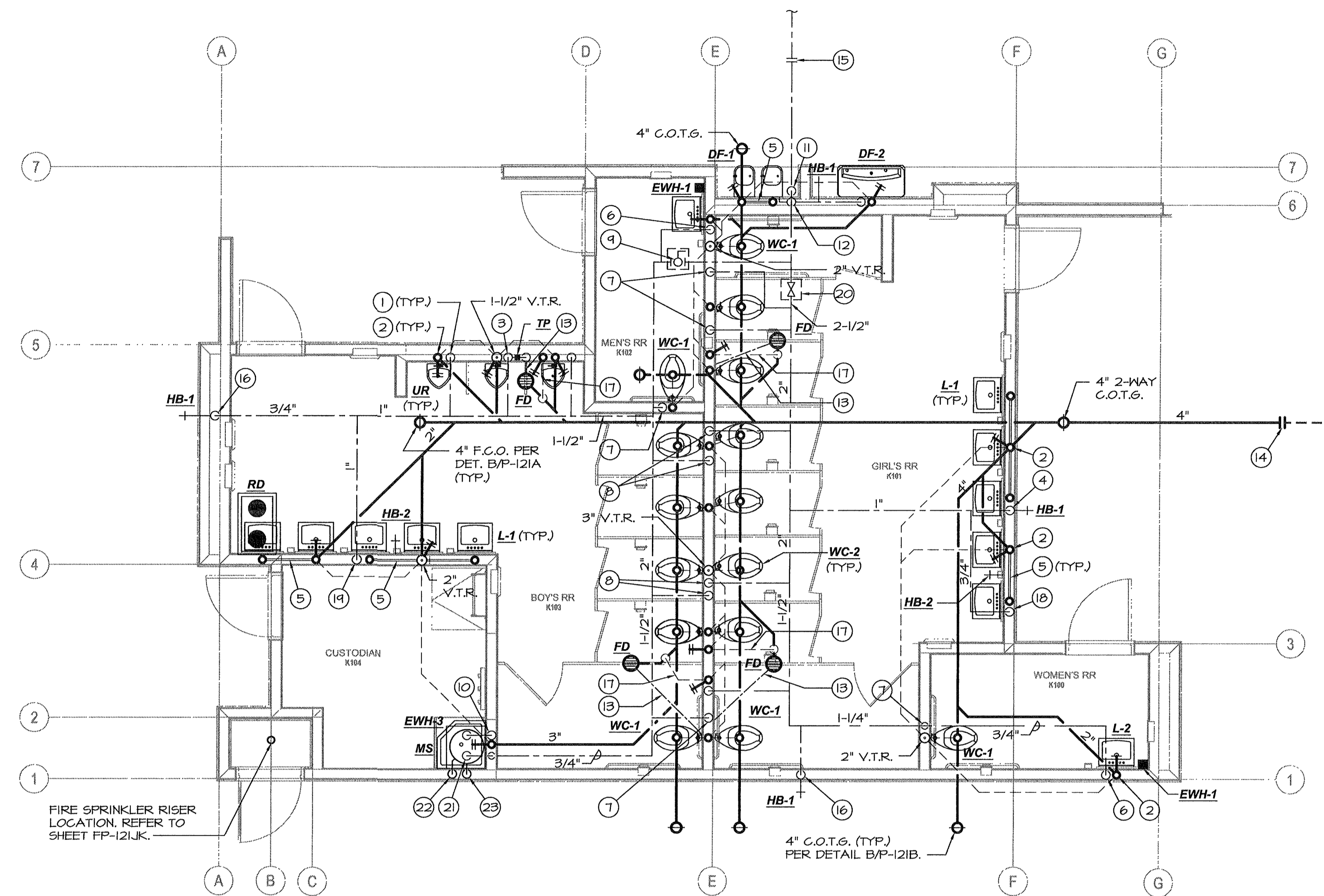


PLUMBING FLOOR PLAN - BUILDING J
SCALE: 1/4"=1'-0"

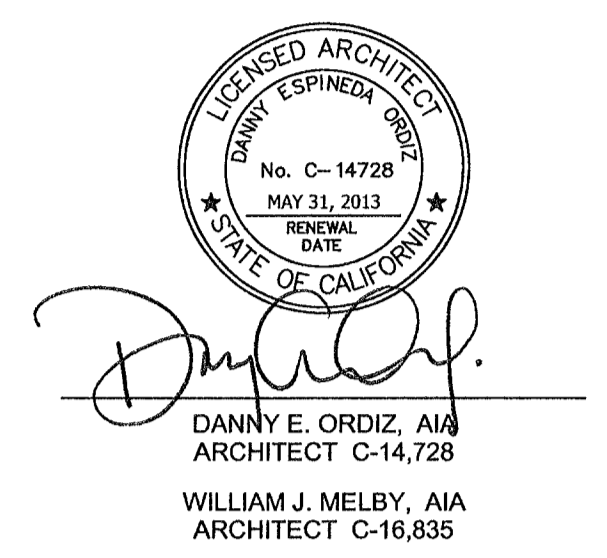


PLUMBING FLOOR PLAN - BUILDING K
SCALE: 1/4"=1'-0"

PLUMBING KEYNOTES:

1. 3/8" C.W. down to urinal w/ Shoktrol.
2. 2" W., 2" W.C.O., 1 1/2" V.O. (or V.T.R. - see plan)
3. 3/8" C.W. down to Urinal, 1/2" on to trap primer, "Shoktrol".
4. 3/8" C.W. down to header w/ 3/4" to H.B., 1/2" to each of 3 lav's.
5. 1 1/2" trap arm
6. 3/8" C.W. down w/ 1/2" to E.W.H. and lav. (provide 1/2" H.W. from E.W.H. up to lav.)
7. 1 1/2" C.W. down w/ "Shoktrol", reduce to 1" @ flush valve.
8. 1 1/2" C.W. down to header w/ 1 1/2" to each W.C., "Shoktrol", reduce to 1" @ flush valve.
9. 2" isolation ball valve above ceiling with 12"x12" S.S. access door.
10. 3/8" H.W./C.W. down, 3" W., 3" W.C.O., 1 1/2" V.O. or V.T.R. (see plan).
11. 2 1/2" C.W. up to 12" above grade with gate valve, enter wall and rise.
12. 2 1/2" C.W. up to attic w/ 3/8" taps @ fixture height for D.F.'s and H.B.
13. 3/8" trap primer line below slab.
14. P.O.C. 4" S.&W. to 5' out, see Civil plans for continuation.
15. P.O.C. 2 1/2" C.W. to 5' out, see Civil plans for continuation.
16. 3/8" C.W. down to H.B.
17. 2" V.O. below slab.
18. 3/8" C.W. down to header w/ 3/8" to H.B., 1/2" to each of 2 lav's.
19. 1" C.W. down to header w/ 3/8" to H.B., 1/2" to each of 5 lav's.
20. 2 1/2" isolation gate valve above ceiling with 12"x12" S.S. access door
21. 3/8" C.W. to / H.W. from E.W.H.
22. 3/8" L.&F. relief to spill @ M.S.
23. 1" secondary pan drain to spill @ M.S.
24. 1" C.W. down to header w/ 3/8" to H.B. & 1/2" to D.F.'s.

C.W. CALC.'s. (BUILDING J & K)		
15 P.L.C.	5 FIXTURE UNITS	= 75
12 LAV'S	1 FIXTURE UNIT	= 12
1 H.S.	3 FIXTURE UNIT	= 3
1 H.B.	2.5 FIXTURE UNITS	= 2.5
5 H.B.'s	1 FIXTURE UNIT	= 5
3 UR's	4 FIXTURE UNITS	= 12
1 D.F.	1 FIXTURE UNIT	= 1
TOTAL		= 110.5 =
70 GPM = 2-1/2" @ 4.9 F.P.S. / 2.0 P.S.I. LOSS / 100'		



IDENTIFICATION STAMP
DIVISION OF STATE ARCHITECT
OFFICE OF REGULATION SERVICES
APPL. #02-112027
FILE # 15-6
DATE 1/19/12
PTN # 63321-112

NEW ELEMENTARY SCHOOL
9801 HIGHLAND KNOLLS DR
BAKERSFIELD CALIFORNIA 93306
NEW MIDDLE SCHOOL
4115 VINELAND ROAD
BAKERSFIELD CALIFORNIA 93306

FOR:
BAKERSFIELD CITY SCHOOL DISTRICT
1300 BAKER STREET
BAKERSFIELD CALIFORNIA 93305

MARK	DATE	DESCRIPTION
△		
△		
△		
△		

JOB NUMBER
200101244
CAD DRAWING FILE
DRAWN BY
KW
CHECKED BY
MB
CHECK AND VERIFY ALL DIMENSIONS BEFORE PROCEEDING WITH THE WORK. REPORT DISCREPANCIES TO THE ARCHITECT.
THE DRAWINGS, IDEAS, AND DESIGNS REPRESENTED ON THIS SHEET ARE THE PROPERTY OF THE ARCHITECT.
COPYRIGHT
ORDIZMELBY ARCHITECTS, INC. 2010
SHEET TITLE

PLUMBING FLOOR PLAN BUILDING J & K

SHEET IDENTIFICATION NUMBER
P-121JK

