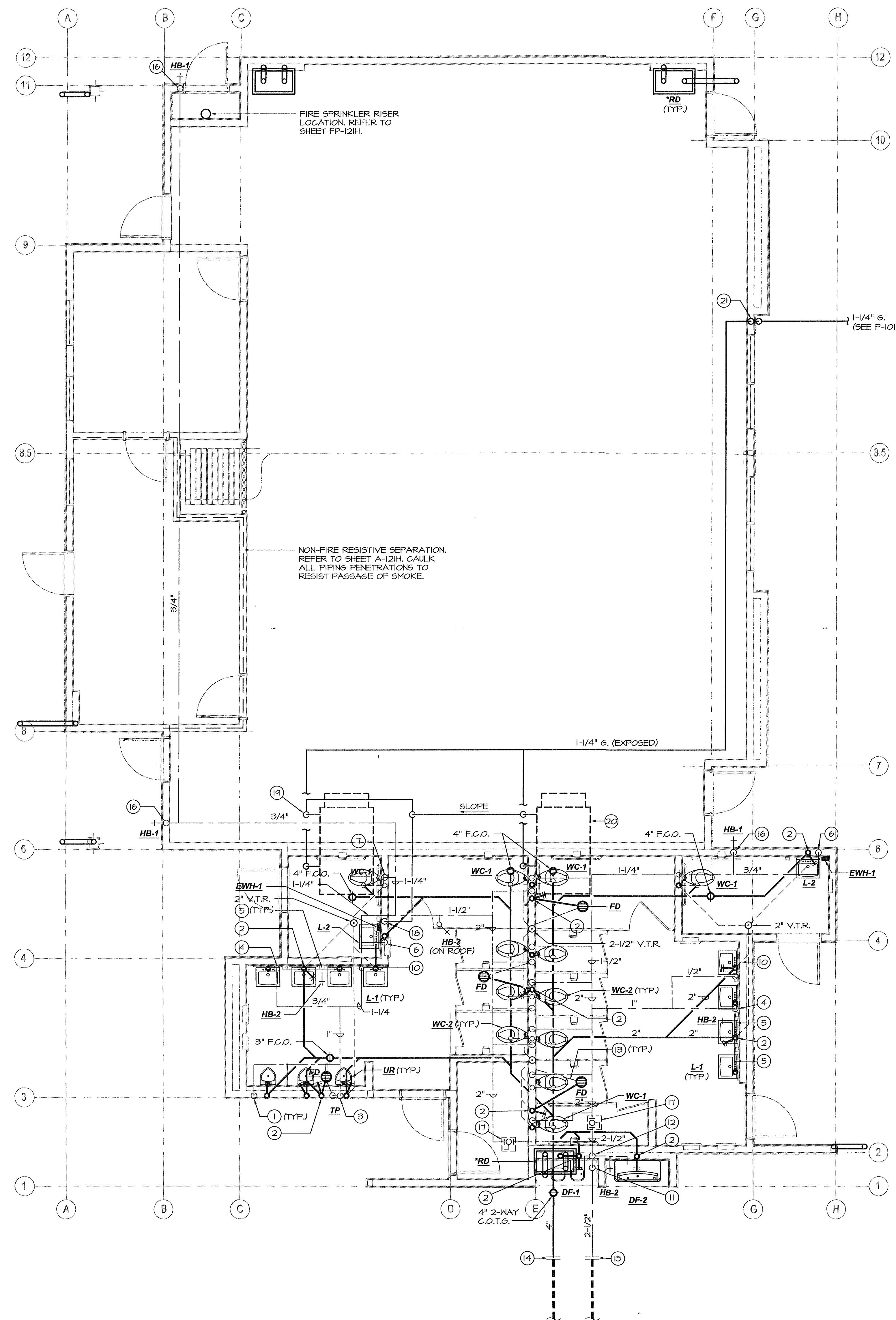


**NEW ELEMENTARY SCHOOL**  
 9801 HIGHLAND KNOLLS DR  
 BAKERSFIELD CALIFORNIA 93306

**NEW MIDDLE SCHOOL**  
 4115 VINELAND ROAD  
 BAKERSFIELD CALIFORNIA 93306

FOR:  
**BAKERSFIELD CITY SCHOOL DISTRICT**  
 1300 BAKER STREET  
 BAKERSFIELD CALIFORNIA 93305



**PLUMBING KEYNOTES:**

1. 3/4" C.W. down to urinal w/ "Shoktrol".
2. 2" W., 2" W.C.O., 1 1/2" V.O.
3. 3/4" C.W. down to Urinal, 1/2" on to trap primer, "Shoktrol".
4. 3/4" C.W. down to header w/3/4" to H.B., 1/2" to each lav.
5. 1 1/2" trap arm
6. 3/4" C.W. down w/ 1/2" to E.W.H. and lav. (provide 1/2" H.W. from E.W.H. up to lav.)
7. 1 1/2" C.W. down w/ "Shoktrol", reduce to 1" @ flush valve.
8. 1 1/2" C.W. down to header w/ 1 1/2" to each W.C., "Shoktrol", reduce to 1" @ flush valve.
9. not used
10. 1/2" C.W. down, 2" W., 2" W.C.O., 1 1/2" V.O. or V.T.R. (see plan).
11. 2 1/2" C.W. up to 12" above grade with gate valve, enter wall and rise.
12. 2 1/2" C.W. up to attic w/ 3/4" traps @ fixture height for D.F.'s and H.B.
13. 1/2" trap primer line below slab.
14. P.O.C. 4" S.&W. to 5' out, see Civil plans for continuation.
15. P.O.C. 2 1/2" C.W. to 5' out, see Civil plans for continuation.
16. 3/4" C.W. down to H.B.
17. 2" isolation ball valve above ceiling with 12"x12" S.S. access door.
18. 3/8" condensate drain down to lav. tailpiece fitting.
19. 3/8" trapped condensate drain thru roof, typical.
20. Packaged gas-electric unit on roof, typical.
21. 1/2" G. up to 12" above grade w/ S.O.V.; enter building and rise up to soffit.

**C.W. CALC'S (BUILDING "H")**

12 P.L.C.'s	5	FIXTURE UNITS	=	60
3 U.R.'s	4	FIXTURE UNITS	=	12
10 LAV.'s	1	FIXTURE UNITS	=	10
1 M.S.	3	FIXTURE UNITS	=	3
1 D.F.	1	FIXTURE UNITS	=	1
1 H.B.	2.5	FIXTURE UNITS	=	2.5
3 H.B.	1	FIXTURE UNITS	=	3
<b>TOTAL</b>				<b>98.5</b>

65 G.P.M. = 2-1/2" @ 4.6 F.P.S./1.8 P.S.I. LOSS/100'

MARK	DATE	DESCRIPTION
△		
△		
△		
△		

20010244  
 CAD DRAWING FILE

DRAWN BY: **KW**  
 CHECKED BY: **MB**

CHECK AND VERIFY ALL DIMENSIONS BEFORE PROCEEDING WITH THE WORK. REPORT DISCREPANCIES TO THE ARCHITECT.

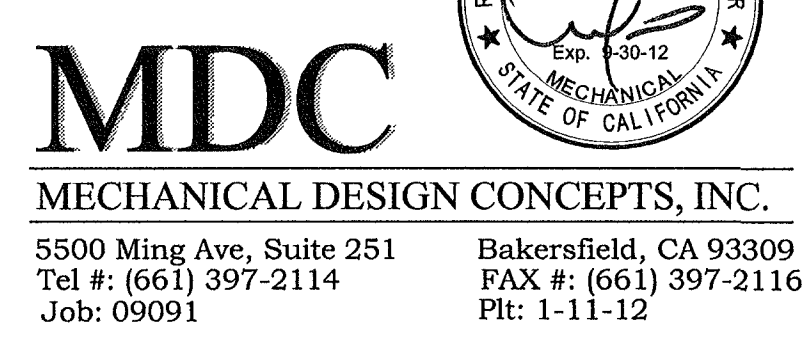
THE DRAWINGS, IDEAS, AND DESIGNS REPRESENTED ON THIS SHEET ARE THE PROPERTY OF THE ARCHITECT.

ORDIZ-MELBY ARCHITECTS, INC. 2010  
 SHEET TITLE

**PLUMBING FLOOR PLAN BUILDING H**

SHEET IDENTIFICATION NUMBER  
**P-121H**

**PLUMBING FLOOR PLAN - BUILDING H**  
 SCALE: 1/4"=1'-0"  
 \* SEE "A" SHEETS FOR PIPE ROUTING.



**MDC**  
 MECHANICAL DESIGN CONCEPTS, INC.  
 5500 Ming Ave, Suite 251 Bakersfield, CA 93309  
 Tel #: (661) 397-2114 FAX #: (661) 397-2116  
 Job: 09091 Pk: 1-11-12