



DANNY E. ORDIZ, AIA
ARCHITECT C-14,728
WILLIAM J. MELBY, AIA
ARCHITECT C-16,835

IDENTIFICATION STAMP
DIVISION OF STATE ARCHITECT
OFFICE OF REGULATION SERVICES
APPL # 02-112027
FILE # 15-6
AC # 11/5/12
DATE 11/5/12
PTN # 63321-112

NEW ELEMENTARY SCHOOL
9801 HIGHLAND KNOLLS DR
BAKERSFIELD CALIFORNIA 93306
NEW MIDDLE SCHOOL
4115 VINELAND ROAD
BAKERSFIELD CALIFORNIA 93306

FOR:
BAKERSFIELD CITY SCHOOL DISTRICT
1300 BAKER STREET
BAKERSFIELD CALIFORNIA 93305

MARK	DATE	DESCRIPTION
△		
△		
△		
△		

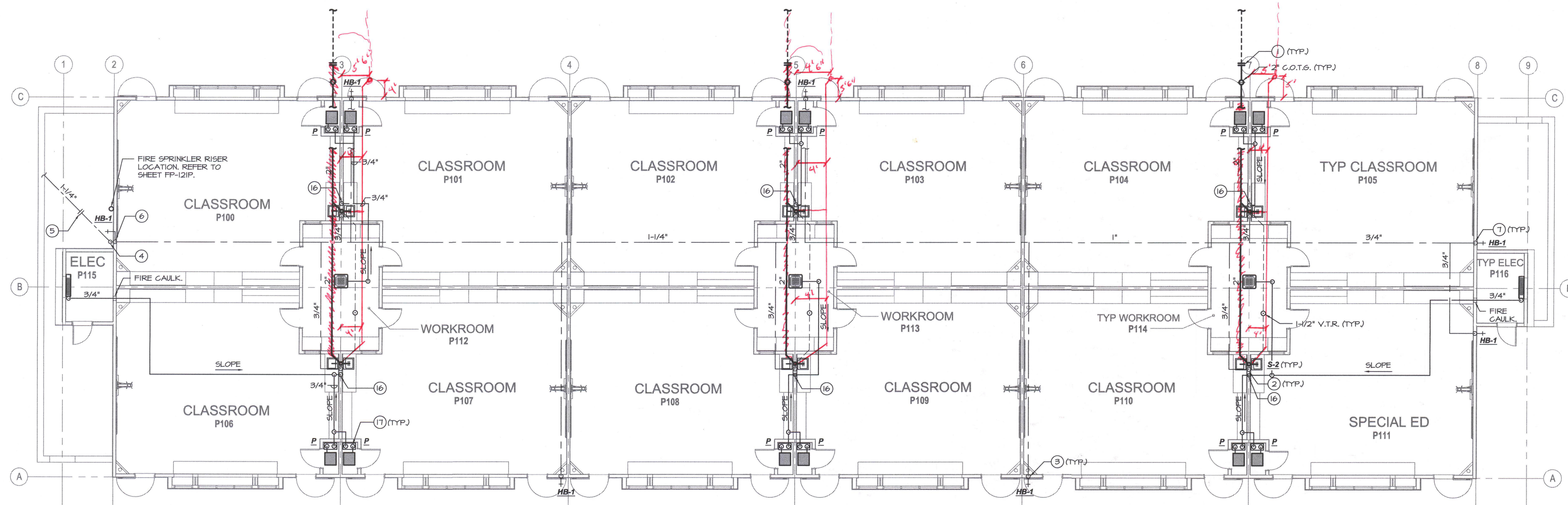
JOB NUMBER
20010244
CAD DRAWING FILE

DRAWN BY:
KW
CHECKED BY:
MB
CHECK AND VERIFY ALL DIMENSIONS BEFORE PROCEEDING WITH THE WORK. REPORT DISCREPANCIES TO THE ARCHITECT.
THE DRAWINGS, IDEAS, AND DESIGNS REPRESENTED ON THIS SHEET ARE THE PROPERTY OF THE ARCHITECT.

COPYRIGHT © 2010
ORDIZ-MELBY ARCHITECTS, INC. 2010

SHEET TITLE
PLUMBING FLOOR PLANS - BUILDINGS D & P

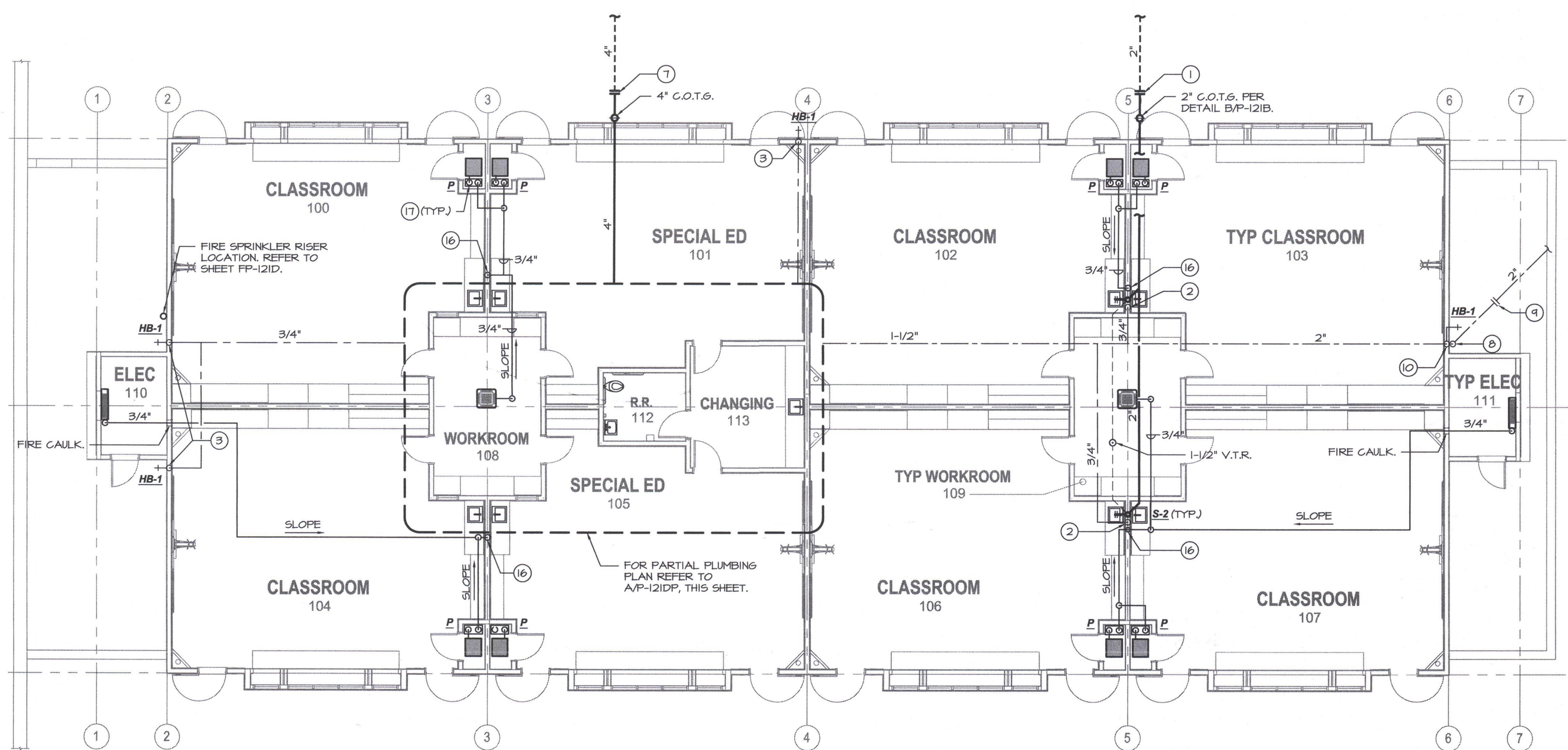
SHEET IDENTIFICATION NUMBER
P-121DP



C.W. CALC's (BUILDING P):

12 SINKS @ 1.5	FIXTURE UNITS = 18
1 H.B. @ 2.5	FIXTURE UNITS = 2.5
5 H.B.'s @ 1	FIXTURE UNIT = 5
TOTAL = 25.5	
18 G.P.M. = 1-1/4" @ 3.0 F.P.S. / 2.1 P.S.I. LOSS / 100'	

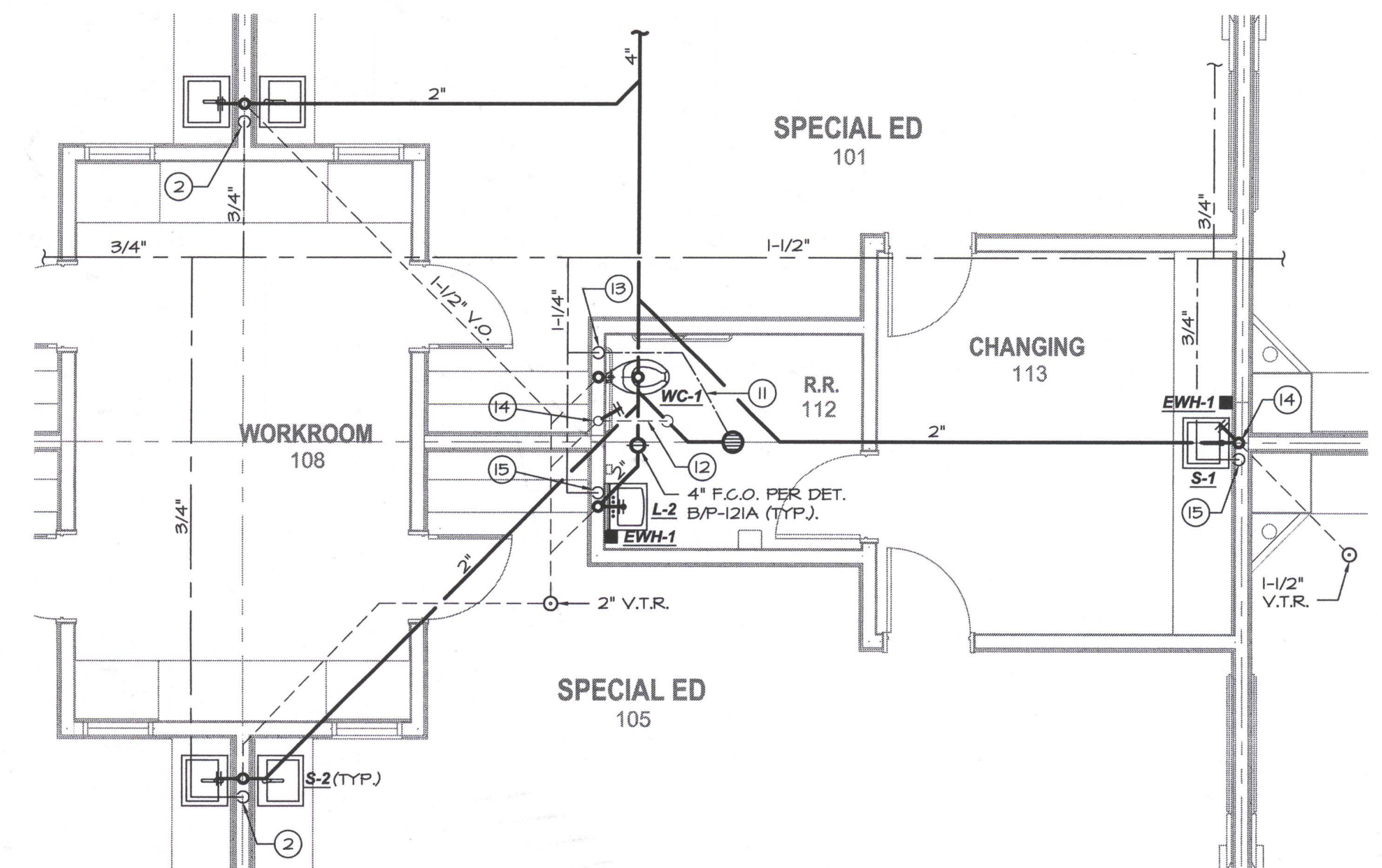
PLUMBING FLOOR PLAN - BUILDING P
SCALE: 1/8"=1'-0"



C.W. CALC's (BUILDING D):

1 W.C. @ 5	FIXTURE UNITS = 5
1 LAV @ 1	FIXTURE UNIT = 1
4 SINKS @ 1.5	FIXTURE UNITS = 13.5
1 H.B. @ 2.5	FIXTURE UNITS = 2.5
5 H.B.'s @ 1	FIXTURE UNIT = 5
TOTAL = 27	
30 G.P.M. = 2" @ 3.0 F.P.S. / 1.7 P.S.I. LOSS / 100'	

PLUMBING FLOOR PLAN - BUILDING D
SCALE: 1/8"=1'-0"



PARTIAL PLUMBING FLOOR PLAN - BUILDING D
SCALE: 1/4"=1'-0"

PLUMBING KEYNOTES (BLD'G. D&P)

- P.O.C. 2" Waste to 5 ft. out, see Civil plans for continuation
- 3/4" C.W. down w/ 1/2" to each sink, 2" W., 2" W.C.O., 1 1/2" V.O.
- 3/4" C.W. down to H.B.
- 1 1/2" C.W. up to 12" above grade with ball valve, enter wall and rise.
- P.O.C. 1 1/2" C.W. to 5 ft. out, see Civil plans for continuation
- 1 1/2" C.W. up to attic with 3/4" tap @ fixture height for H.B.
- P.O.C. 4" S.&W. to 5 ft. out, see Civil plans for continuation
- 2" C.W. up to 12" above grade with ball valve, enter wall and rise.
- P.O.C. 2" C.W. to 5 ft. out, see Civil plans for continuation
- 2" C.W. up to attic with 3/4" tap @ fixture height for H.B.
- 1/2" trap primer line below slab
- 2" V.O. line below slab
- 1 1/2" C.W. down to W.V. w/ "Shoktrol", reduce to 1" @ flush-valve.
- 2" W.C.O., 1 1/2" V.O.
- 3/4" C.W. down w/ 1/2" to lav. and E.W.H. (provide 1/2" H.W. up from E.W.H. to faucet).
- 3/4" condensate drain down to sink tailpiece fitting.
- 3/4" trapped condensate drain down to pump.

