

ORDIZ MELBY
ARCHITECTS, INC.

5500 MING AVENUE SUITE 280
BAKERSFIELD, CALIFORNIA 93309
TELEPHONE (861) 832-5258
FACSIMILE (861) 832-4291



DANNY E. ORDIZ, AIA
ARCHITECT C-14,728
WILLIAM J. MELBY, AIA
ARCHITECT C-16,835

CONSULTANT

IDENTIFICATION STAMP
DIVISION OF STATE ARCHITECT
OFFICE OF REGULATION SERVICES
APPL # 02-112027
FILE # 15-6
AC FLS SS
DATE
PTN # 83321-112

NEW ELEMENTARY SCHOOL
9801 HIGHLAND KNOLLS DR
BAKERSFIELD
CALIFORNIA
93306

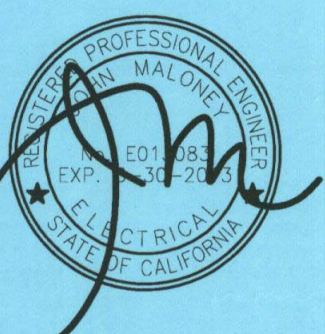
NEW MIDDLE SCHOOL
4115 VINELAND ROAD
BAKERSFIELD
CALIFORNIA
93306

FOR:

BAKERSFIELD CITY SCHOOL
DISTRICT
1300 BAKER STREET
BAKERSFIELD
CALIFORNIA
93305



JMPE
ELECTRICAL ENGINEERING
LICENSED DESIGN
CA REGISTRATION NO. 8130883
10294
5500 MING AVENUE
SUITE 280
BAKERSFIELD, CA 93309
(861) 831-7911
FAX (861) 831-7913
www.jmpe.net



MARK DATE DESCRIPTION

△	2-21-12	ADDENDUM NO. 01
△		
△		
△		

CAD NUMBER: 20101244

CAD DRAWING FILE: #Ph1244-BLDG J-K (RESTROOM MID)-REV.ph

DRAWN BY: AC
CHECKED BY: PH

CHECK AND VERIFY ALL DIMENSIONS BEFORE PROCEEDING WITH THE WORK. REPORT DISCREPANCIES TO THE ARCHITECT.

THE DRAWINGS, IDEAS, AND DESIGNS REPRESENTED ON THIS SHEET ARE THE PROPERTY OF THE ARCHITECT.

COPYRIGHT: ORDIZ-MELBY ARCHITECTS, INC. 2010

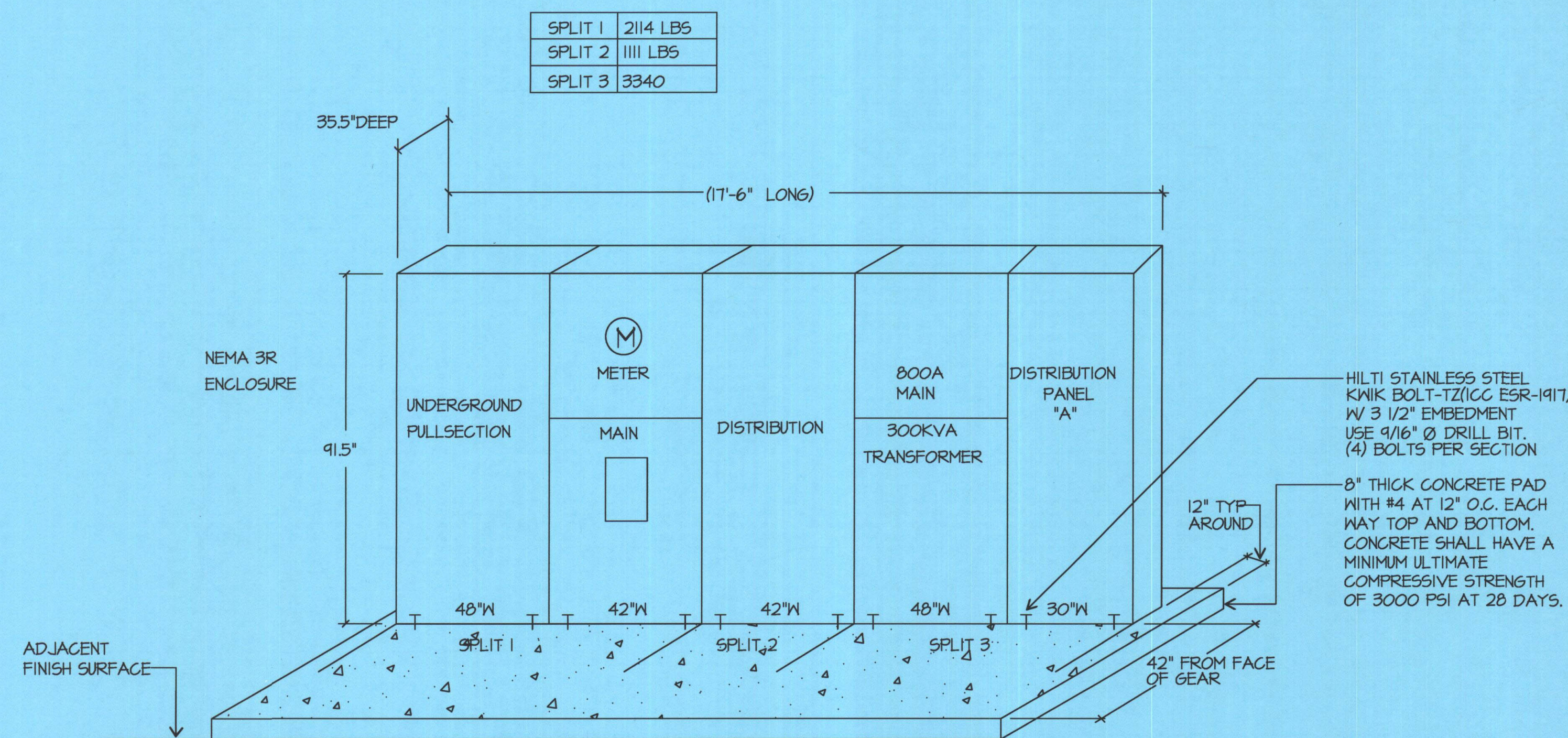
SHEET TITLE

DETAILS

SHEET IDENTIFICATION NUMBER

E-003

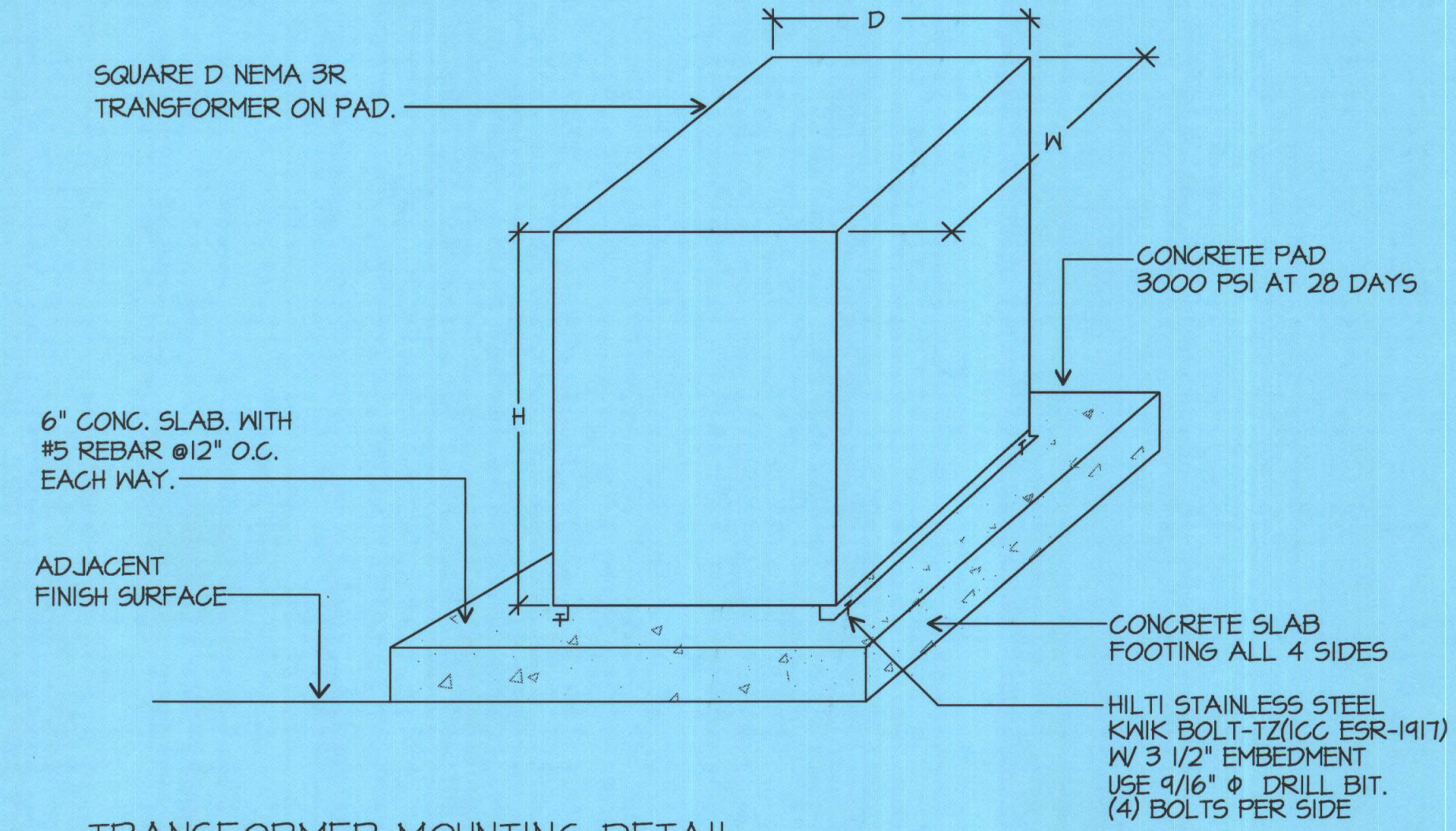
SHEET OF



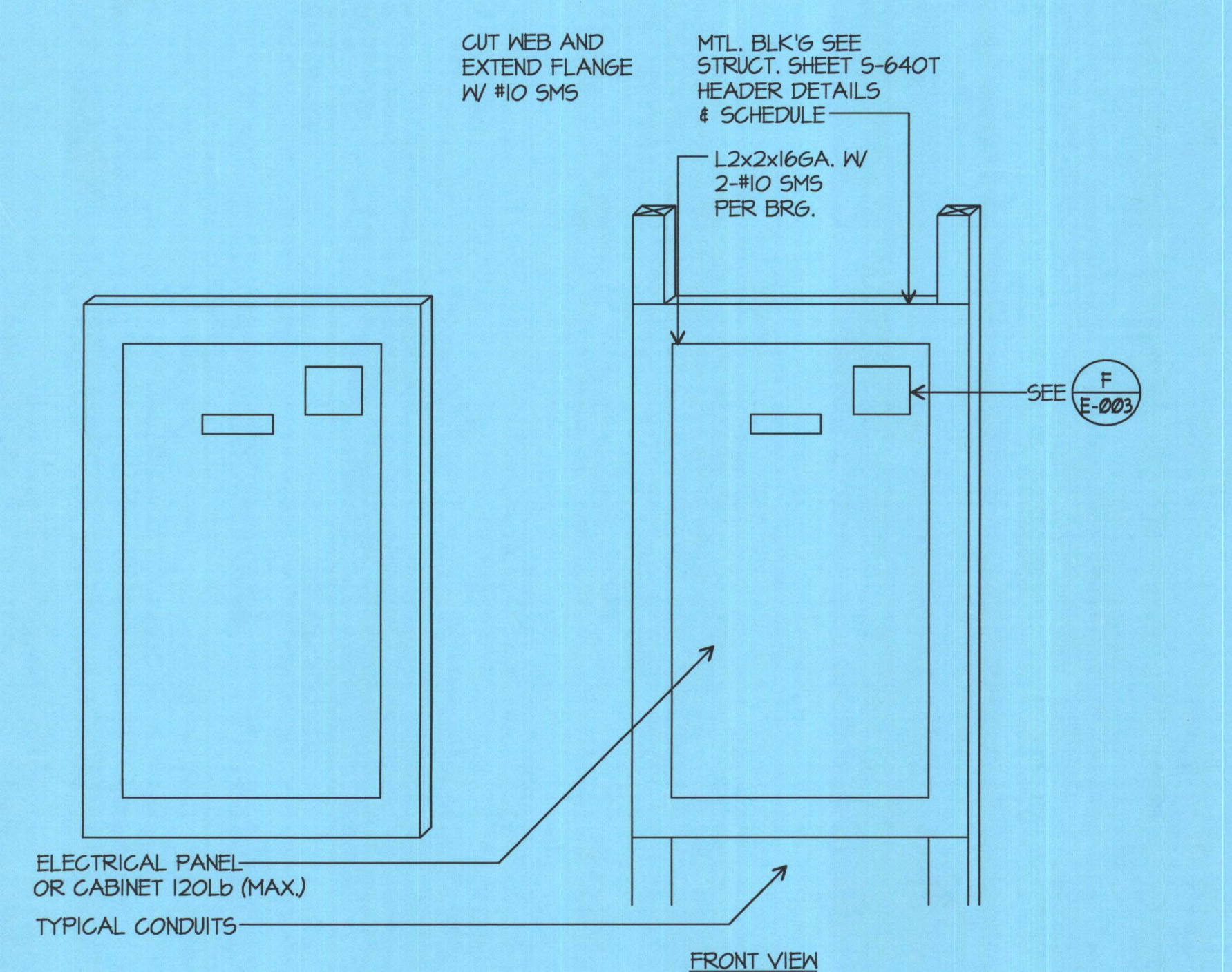
SWITCH BOARD DETAIL "MSB"
SCALE: NONE

TRANSFORMER KVA RATING	H	W	D	WEIGHT
75 KVA	31"	30"	20"	642 LBS
112.5 KVA	31"	30"	24"	125 LBS

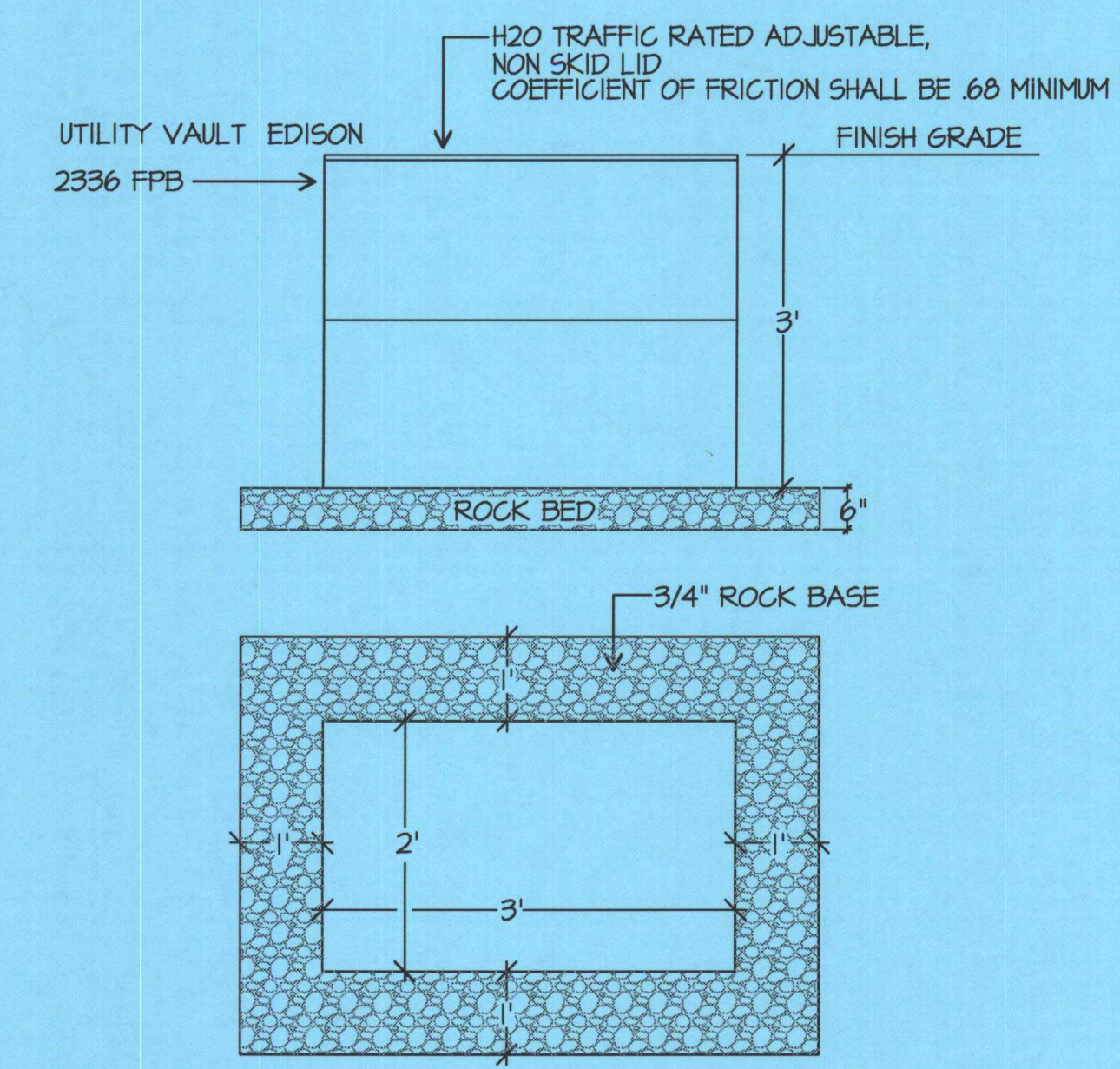
NOTES:
1. FOR OUTDOOR TRANSFORMER MOUNTING, CONCRETE PAD SHALL BE 12" WIDER THAN TRANSFORMER HOUSING. TOP OF PAD SHALL BE 2" ABOVE ADJACENT GRADE.



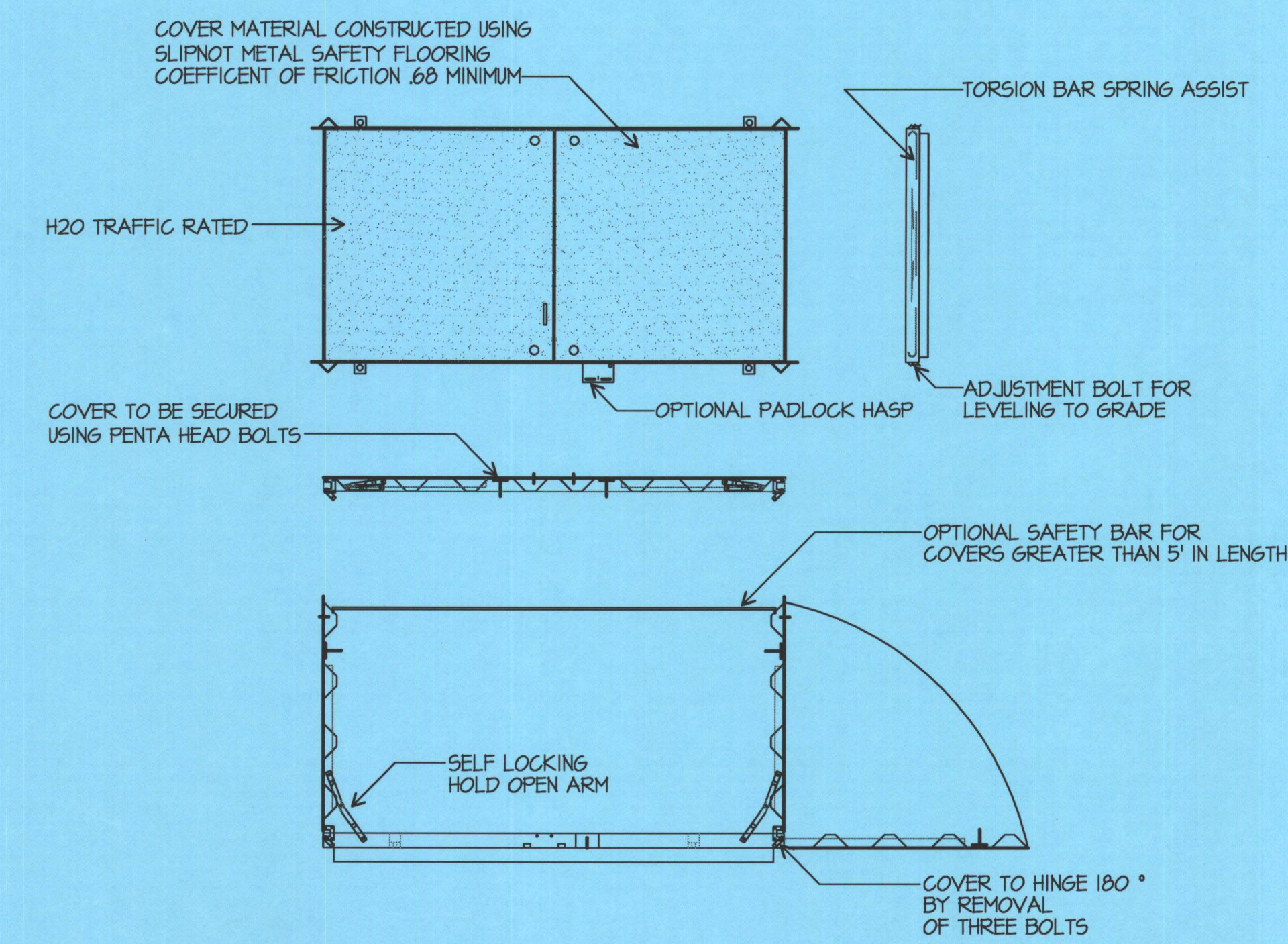
TRANSFORMER MOUNTING DETAIL
SCALE: NONE



PANELBOARD MOUNTING DETAIL
SCALE: NONE



VAULT DETAIL 2'x3'x3'
SCALE: NONE



STANDARD TORSION ASSEMBLY VAULT LID
SCALE: NONE

PANELS SHALL HAVE CONDUCTOR IDENTIFICATION INFORMATION PERMANENTLY POSTED

VOLTAGE 208Y/120V
PHASE A BLACK PHASE B RED PHASE C BLUE NEUTRAL WHITE

VOLTAGE 480Y/277V
PHASE A BROWN PHASE B ORANGE PHASE C YELLOW NEUTRAL GREY

COLOR CODE DETAIL
SCALE: NONE

Item #37: Refer to Electrical Drawings. ADDENDUM No. 001

A. ADD: Detail Sheet E-003. Refer to detail "A" for the MSB mounting detail. Detail "B" is typical for the transformer locations. Detail "C" is typical for electrical panel locations. Details "D" and "E" are typical for the vault locations. Detail "F" refers to panel labeling requirements, typical at all electrical panels.
B. ADD: Electrical PV Conduit Site Plan for future PV project. Contractor to identify conduit cost as separate line item on schedule of values.