



IDENTIFICATION STAMP  
 DIVISION OF STATE ARCHITECT  
 OFFICE OF REGULATION SERVICES  
 APPL. # 02-112027  
 FILE # 15-6  
 AC. W. J. MELBY 188  
 DATE JAN 20 2012  
 PTN # 63321-112

NEW ELEMENTARY SCHOOL  
 9801 HIGHLAND KNOLLS DR  
 BAKERSFIELD CALIFORNIA 93306  
 NEW MIDDLE SCHOOL  
 4115 VINELAND ROAD  
 BAKERSFIELD CALIFORNIA 93306

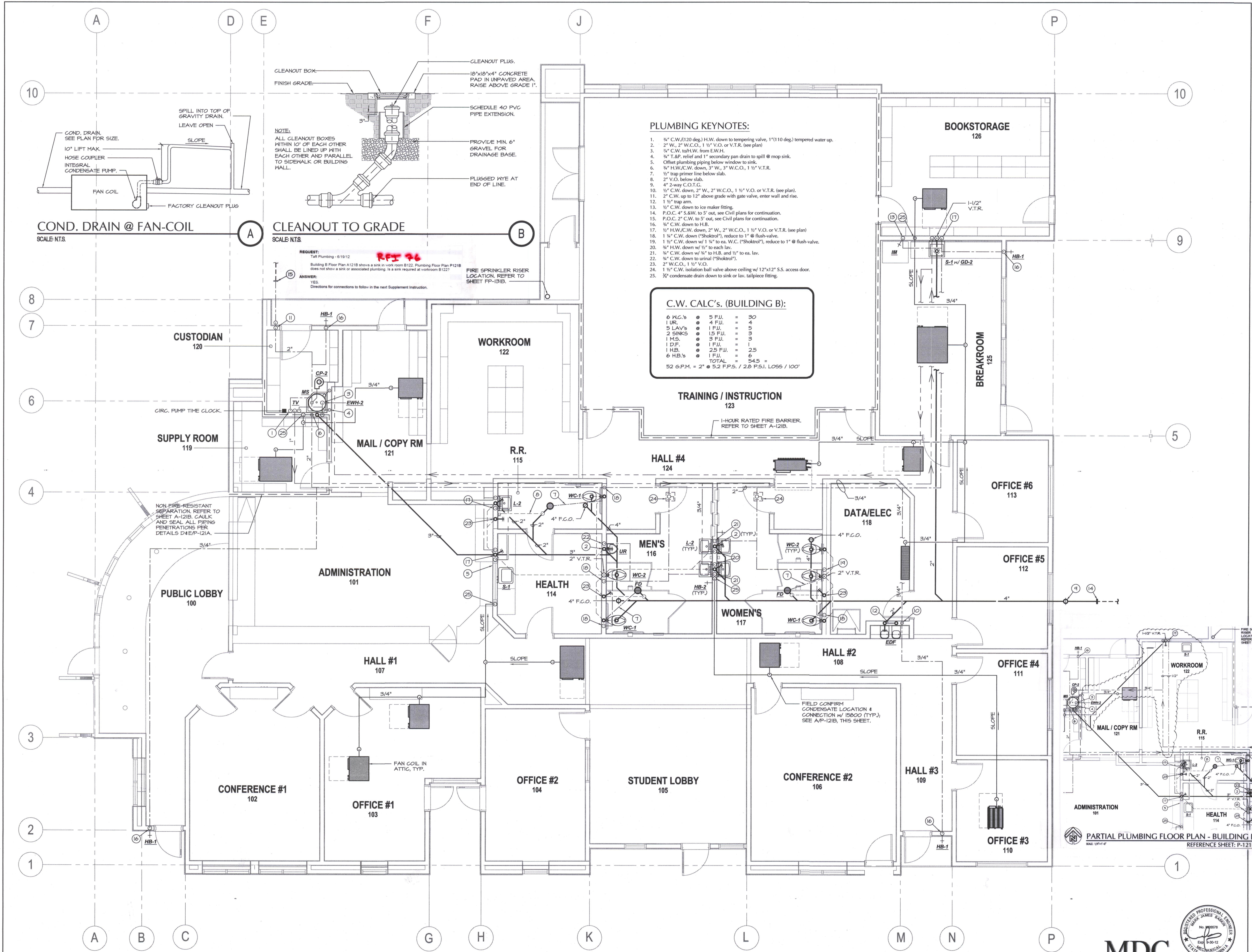
FOR:  
**BAKERSFIELD CITY SCHOOL DISTRICT**  
 1300 BAKER STREET  
 BAKERSFIELD CALIFORNIA 93305

MARK	DATE	DESCRIPTION

JOB NUMBER: **200101244**  
 CAD DRAWING FILE:  
 DRAWN BY: **KW**  
 CHECKED BY: **MB**  
 CHECK AND VERIFY ALL DIMENSIONS BEFORE PROCEEDING WITH THE WORK. REPORT DISCREPANCIES TO THE ARCHITECT.  
 THE DRAWINGS, IDEAS, AND DESIGNS REPRESENTED ON THIS SHEET ARE THE PROPERTY OF THE ARCHITECT.  
 COPYRIGHT © 2010  
 ORDIZ-MELBY ARCHITECTS, INC. 2010

SHEET TITLE  
**PLUMBING FLOOR PLAN BUILDING B**

SHEET IDENTIFICATION NUMBER  
**P-121B**



**PLUMBING KEYNOTES:**

- 1/2" C.W. (120 deg.) H.W. down to tempering valve, 1" (110 deg.) tempered water up.
- 2" W., 2" W.C.O., 1 1/2" V.O. or V.T.R. (see plan).
- 3/4" C.W. to H.W. from E.W.H.
- 3/4" T.A.P. relief and 1" secondary pan drain to spill @ mop sink.
- Offset plumbing piping below window to sink.
- 1/2" H.W./C.W. down, 3" W., 3" W.C.O., 1 1/2" V.T.R.
- 1/2" trap primer line below slab.
- 2" V.O. below slab.
- 4" 2-way C.O.T.G.
- 1/2" C.W. down, 2" W., 2" W.C.O., 1 1/2" V.O. or V.T.R. (see plan).
- 2" C.W. up to 12" above grade with gate valve, enter wall and rise.
- 1 1/2" trap arm.
- 1/2" C.W. down to ice maker fitting.
- P.O.C. 4" S.&W. to 5" out, see Civil plans for continuation.
- P.O.C. 2" C.W. to 5" out, see Civil plans for continuation.
- 3/4" C.W. down to H.B.
- 1/2" H.W./C.W. down, 2" W., 2" W.C.O., 1 1/2" V.O. or V.T.R. (see plan).
- 1 1/2" C.W. down (Shokrol), reduce to 1" @ flush-valve.
- 1 1/2" C.W. down w/ 1 1/2" to ea. W.C. (Shokrol), reduce to 1" @ flush-valve.
- 3/4" H.W. down w/ 1/2" to each lav.
- 1/2" C.W. down w/ 1/2" to H.B. and 1/2" to ea. lav.
- 3/4" C.W. down to urinal (Shokrol).
- 2" W.C.O., 1 1/2" V.O.
- 1 1/2" C.W. isolation ball valve above ceiling w/ 12"x12" S.S. access door.
- 1/2" condensate drain down to sink or lav. tailpiece fitting.

**C.W. CALC'S. (BUILDING B):**

6 W.C.'s	5 F.U.'s	= 30
1 UR.	4 F.U.'s	= 4
5 LAV.'s	1 F.U.'s	= 5
2 SINKS	1.5 F.U.'s	= 3
1 H.S.	3 F.U.'s	= 3
1 D.F.	1 F.U.'s	= 1
1 H.B.	2.5 F.U.'s	= 2.5
6 H.B.'s	1 F.U.'s	= 6
	TOTAL	= 54.5
52 G.P.M. = 2" @ 5.2 F.P.S. / 2.8 P.S.I. LOSS / 100'		

**COND. DRAIN @ FAN-COIL**  
 SCALE N.T.S.

**CLEANOUT TO GRADE**  
 SCALE N.T.S.

**REQUEST:**  
 Talk Plumbing - 8/19/12  
 Building B Floor Plan A121B shows a sink in work room B122. Plumbing Floor Plan P121B does not show a sink or associated plumbing. Is a sink required at workroom B122?  
**ANSWER:**  
 YES.  
 Directions for connections to follow in the next Supplement Instruction.

NON-FIRE-RESISTANT SEPARATION REFER TO SHEET A-121B. CALK AND SEAL ALL PIPING PENETRATIONS PER DETAILS D4E/P-121A.

FIELD CONFIRM CONDENSATE LOCATION & CONNECTION W/ 15800 (TYP.); SEE A/P-121B, THIS SHEET.