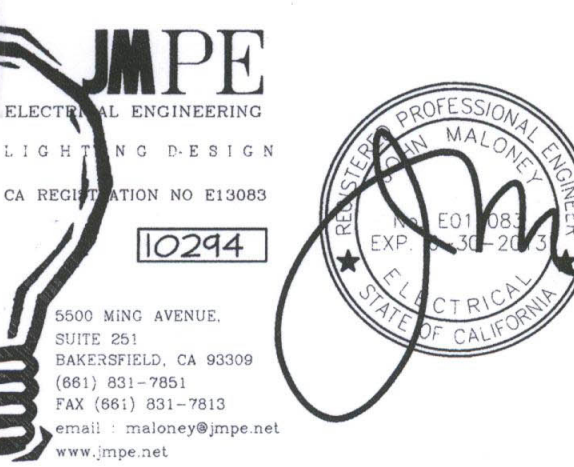


NEW ELEMENTARY SCHOOL
9801 HIGHLAND KNOLLS DR
BAKERSFIELD
CALIFORNIA
93306

NEW MIDDLE SCHOOL
4115 VINELAND ROAD
BAKERSFIELD
CALIFORNIA
93306

FOR:

BAKERSFIELD CITY SCHOOL DISTRICT
1300 BAKER STREET
BAKERSFIELD
CALIFORNIA
93305



MARK	DATE	DESCRIPTION
△		
△		
△		
△		

JOB NUMBER: 20101244
CAD DRAWING FILE:

DRAWN BY: AC
CHECKED BY: PH

CHECK AND VERIFY ALL DIMENSIONS BEFORE PROCEEDING WITH THE WORK. REPORT DISCREPANCIES TO THE ARCHITECT. THE DRAWINGS, IDEAS, AND DESIGNS REPRESENTED ON THIS SHEET ARE THE PROPERTY OF THE ARCHITECT.

COPYRIGHT: ORDIZ-MELBY ARCHITECTS, INC. 2010

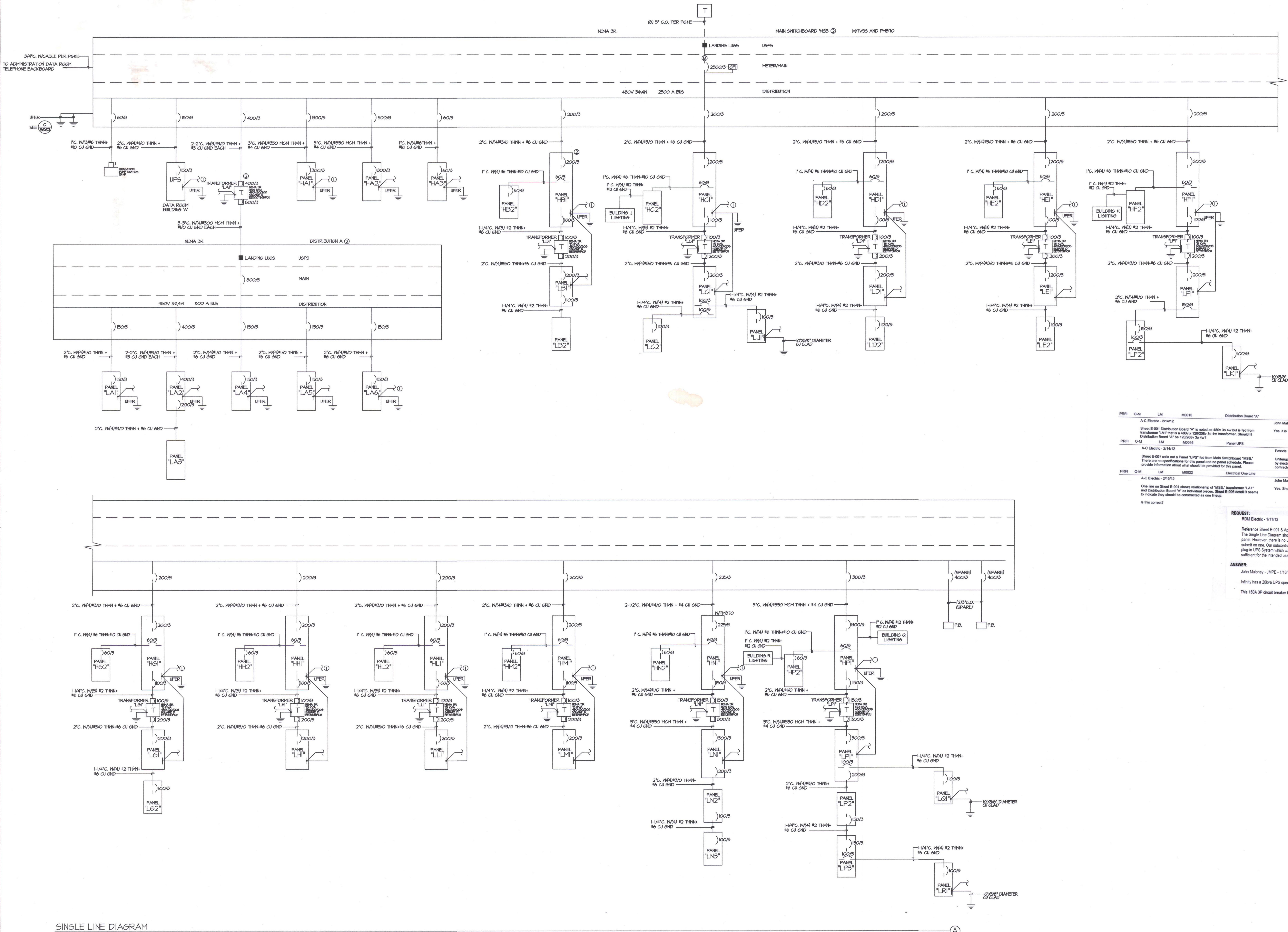
SHEET TITLE
SINGLE LINE DIAGRAM

SHEET IDENTIFICATION NUMBER

E-001

SHEET OF

① BOND TO BUILDING, TYPICAL.
② SEE SHEET E-006 FOR MOUNTING DETAILS, TYPICAL.



PRJ#	Q.M.	LM	MOD#	Distribution Board 'A'	CLO	2/14/2012	2/14/2012	2/14/2012
A-C Electric - 2/14/12				Sheet E-001 Distribution Board 'A' is noted as 480V 3φ but is fed from transformer 'LAT' that is a 480V, 120/208V 3φ transformer. Shown correct	John Matoney - JMPE Electrical Engineering & Lighting Design - 2/14/12	Yes	It is 120/208V 3φ 4w	
PRJ#	Q.M.	LM <td>MOD# <td>Panel UPS</td> <td>CLO</td> <td>2/14/2012</td> <td>2/23/2012</td> <td>2/21/2012</td> </td>	MOD# <td>Panel UPS</td> <td>CLO</td> <td>2/14/2012</td> <td>2/23/2012</td> <td>2/21/2012</td>	Panel UPS	CLO	2/14/2012	2/23/2012	2/21/2012
A-C Electric - 2/14/12				Sheet E-001 calls out a Panel 'UPS' fed from Main Switchboard 'MSB'. There are no specifications for the panel and no panel schedule. Please provide information about what should be provided for this panel.	Patrick J. Hayes, PE Electrical Engineer - 2/23/12	Uninterrupted power supply provided by ERATE contractor. Feeder provided by electrical contractor. Coordinate termination requirements with ERATE contractor.		
PRJ#	Q.M.	LM <td>MOD#</td> <td>Electrical One Line</td> <td>CLO</td> <td>2/15/2012</td> <td>2/17/2012</td> <td>2/22/2012</td>	MOD#	Electrical One Line	CLO	2/15/2012	2/17/2012	2/22/2012
A-C Electric - 2/15/12				One line on Sheet E-001 shows relationship of 'MSB', transformer 'LAT' and Distribution Board 'A' as individual pieces. Sheet E-006 detail B seems to indicate they should be constructed as one piece.	John Matoney - 2/17/12	Yes, Sheet E-006 detail B is correct.		

REQUEST:
RDM Electric - 1/11/13
Reference Sheet E-001 & Approved A/V Submittal
The Single Line Diagram shows a 150A, 3P sub-breaker which is supposed to feed a UPS panel. However, there is no UPS panel schedule provided in the plans, therefore we did not submit one. Our subcontractor, Serban Sound, submitted on a 120V, rack-mounted, plug-in UPS system which was approved. Is the UPS that was submitted by Serban Sound sufficient for the intended use or is there supposed to be an actual UPS panel? Please advise.

ANSWER:
John Matoney - JMPE - 1/16/13
Infinity has a 20kva UPS specified.
This 150A 3P circuit breaker feeds it.

RFE 245

SINGLE LINE DIAGRAM

E:\0208\10244\DATE\12-14-11 AC