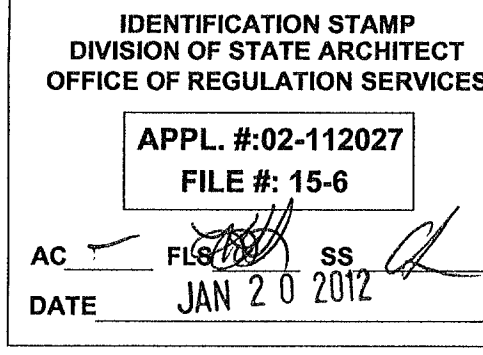


Danny E. Ordiz
 DANNY E. ORDIZ, AIA
 ARCHITECT C-14,728
 WILLIAM J. MELBY, AIA
 ARCHITECT C-16,835



NEW ELEMENTARY SCHOOL
 9801 HIGHLAND KNOLLS DR
 BAKERSFIELD CALIFORNIA 93306
 NEW MIDDLE SCHOOL
 4115 VINELAND ROAD
 BAKERSFIELD CALIFORNIA 93306

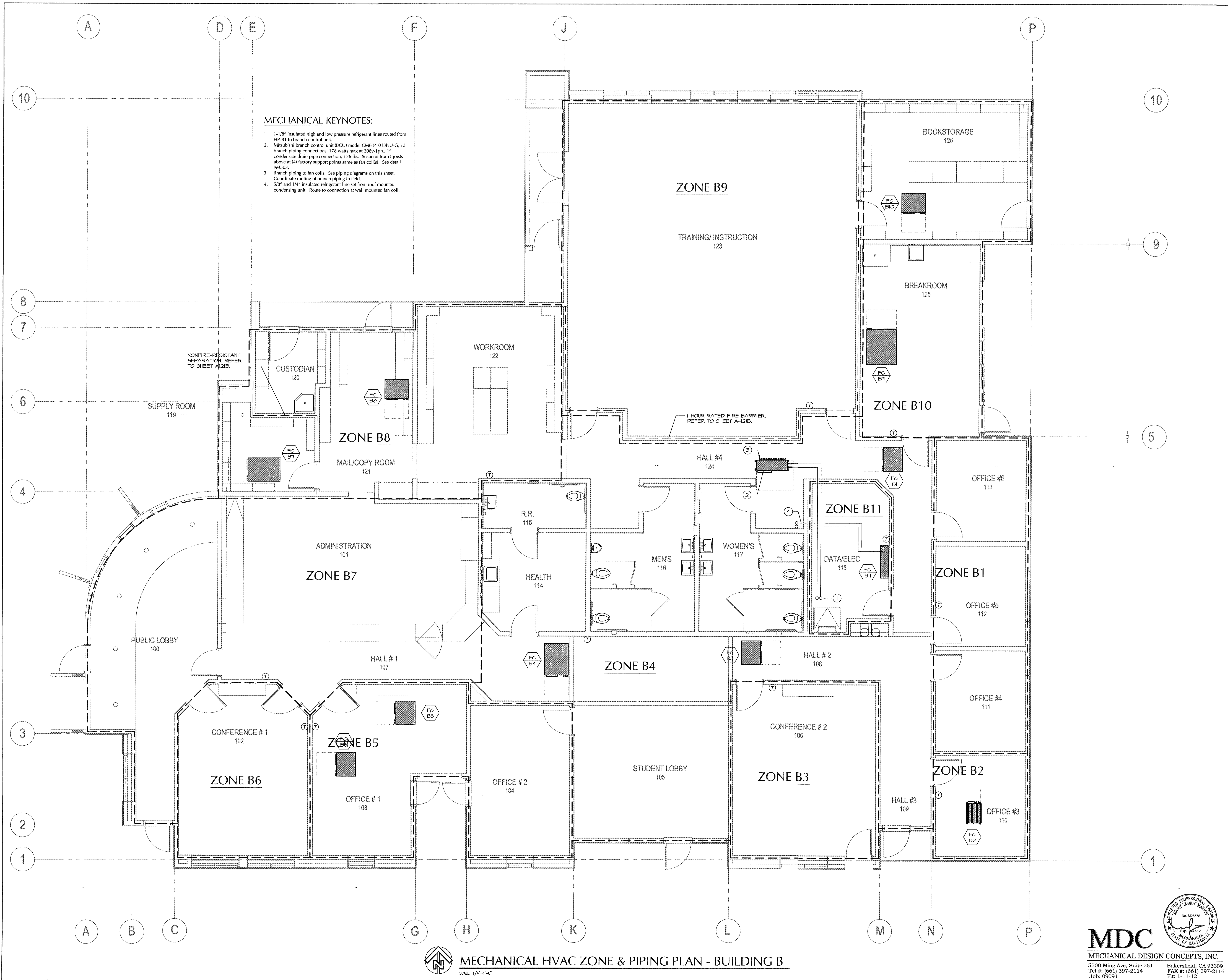
FOR:
BAKERSFIELD CITY SCHOOL DISTRICT
 1300 BAKER STREET
 BAKERSFIELD CALIFORNIA 93305

MARK	DATE	DESCRIPTION
△		
△		
△		
△		

200101244
 CAD DRAWING FILE:
 DRAWN BY: KW
 CHECKED BY: MB
 CHECK AND VERIFY ALL DIMENSIONS BEFORE PROCEEDING WITH THE WORK. REPORT DISCREPANCIES TO THE ARCHITECT. THE DRAWINGS, SEALS, AND DESIGN REPRESENTED ON THIS SHEET ARE THE PROPERTY OF THE ARCHITECT.
 SHEET TITLE

MECHANICAL HVAC ZONE PLAN - BUILDING B

SHEET IDENTIFICATION NUMBER
M-121B



- MECHANICAL KEYNOTES:**
- 1-1/8" insulated high and low pressure refrigerant lines routed from HP-B1 to branch control unit.
 - Mitsubishi branch control unit (BCU) model CMB-P1013NLI-G, 13 branch piping connections, 178 watts max at 208v-1ph., 1" condensate drain pipe connection, 126 lbs. Suspend from I-joints above at (4) factory support points same as fan coils. See detail (M)503.
 - Branch piping to fan coils. See piping diagrams on this sheet. Coordinate routing of branch piping in field.
 - 5/8" and 1/4" insulated refrigerant line set from roof mounted condensing unit. Route to connection at wall mounted fan coil.

MECHANICAL HVAC ZONE & PIPING PLAN - BUILDING B
 SCALE: 1/4"=1'-0"

