

**ORDIZ MELBY**  
ARCHITECTS, INC.

5500 MING AVENUE SUITE 280  
BAKERSFIELD, CALIFORNIA 93309  
TELEPHONE (661) 832-5258  
FACSIMILE (661) 832-4291



*Danny E. Ordiz*  
DANNY E. ORDIZ, AIA  
ARCHITECT C-14,728  
WILLIAM J. MELBY, AIA  
ARCHITECT C-16,835

IDENTIFICATION STAMP  
DIVISION OF STATE ARCHITECT  
OFFICE OF REGULATION SERVICES  
APPL. #: 02-112027  
FILE #: 15-6  
AC \_\_\_\_\_ FLS \_\_\_\_\_ SS \_\_\_\_\_  
DATE JAN 20 2012  
PTN # 63321-112

**MARTIN & ASSOCIATES**  
JOHN A. MARTIN & ASSOCIATES  
Structural Engineers  
2929 The Old Road, Ste. 316  
Stevenson Ranch, CA 91381  
Phone (661) 260-2646  
Fax (661) 260-2646  
JAMA JOB #13145



**NEW ELEMENTARY SCHOOL**  
9801 HIGHLAND KNOLLS DR.  
BAKERSFIELD CALIFORNIA 93306

**NEW MIDDLE SCHOOL**  
4115 VINELAND ROAD  
BAKERSFIELD CALIFORNIA 93306

**FOR: BAKERSFIELD CITY SCHOOL DISTRICT**

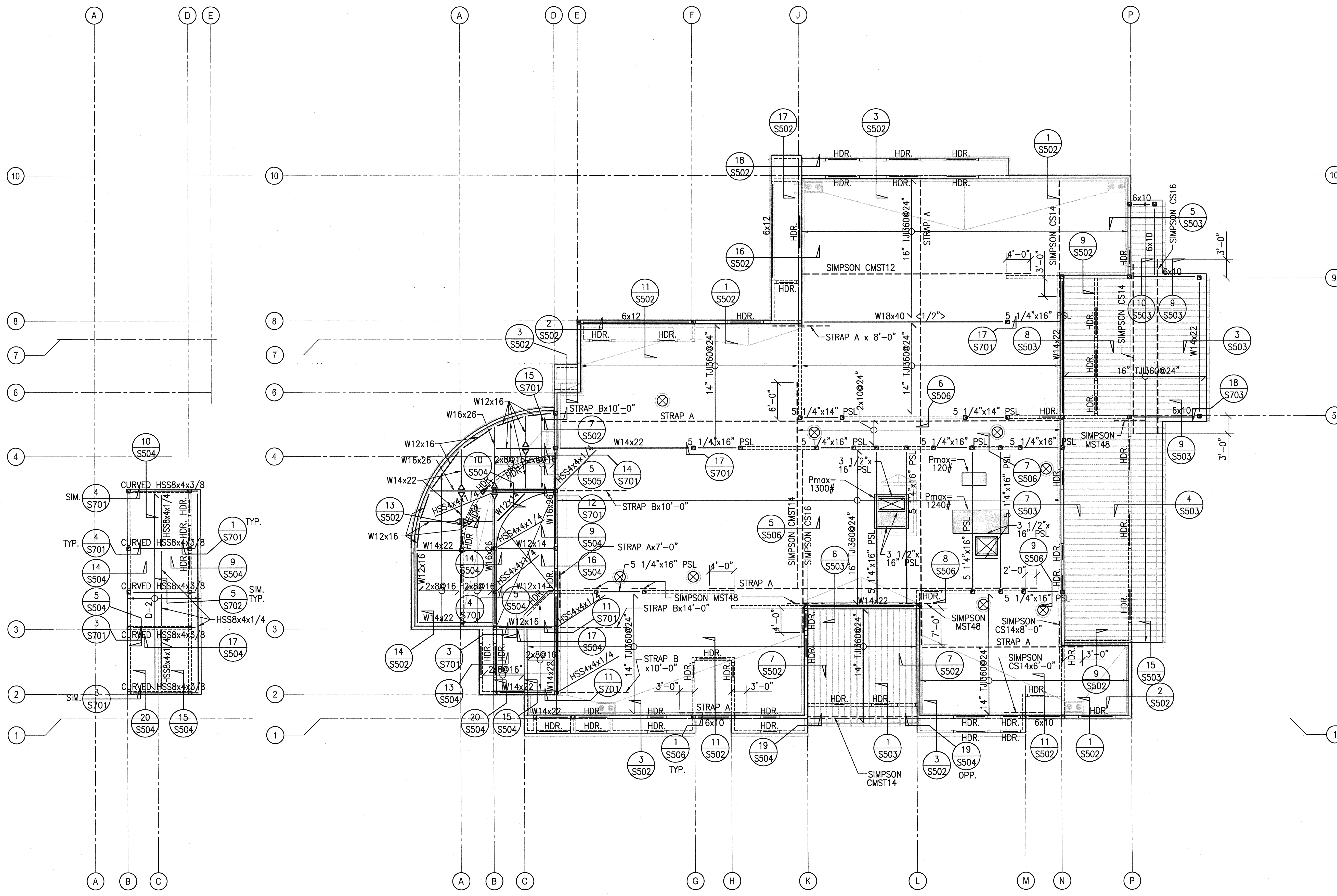
1300 BAKER STREET  
BAKERSFIELD CALIFORNIA 93305

MARK	DATE	DESCRIPTION
△		
△		
△		
△		

20101244  
CAD DRAWING FILE  
DRAWN BY: RM  
CHECKED BY: MDC  
CHECK AND VERIFY ALL DIMENSIONS BEFORE PROCEEDING WITH THE WORK. REPORT DISCREPANCIES TO THE ARCHITECT.  
THE DRAWINGS, IDEAS, AND DESIGNS REPRESENTED ON THIS SHEET ARE THE PROPERTY OF THE ARCHITECT.  
COPYRIGHT ORDIZ/MELBY ARCHITECTS, INC. 2010

SHEET TITLE  
**BUILDING B  
ROOF FRAMING PLAN**

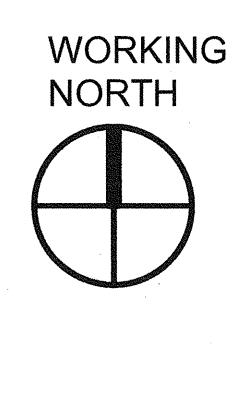
SHEET IDENTIFICATION NUMBER  
**S202B**



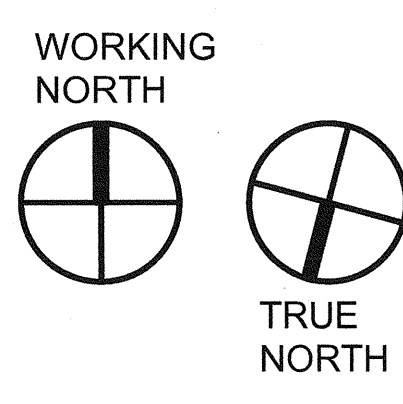
**NOTES:**

- FRAMING PLANS AND STRUCTURAL DRAWINGS INDICATE LOCATION AND EXTENT OF PLYWOOD SHEAR PANELS. IN ADDITION, CONTRACTOR SHALL PROVIDE ADDITIONAL PLYWOOD ADJACENT TO SHEAR PANELS AS REQUIRED TO PROVIDE CONTINUOUS, FLUSH, EVEN SUBSTRATE FOR FINISH MATERIALS. UNLESS SPECIFICALLY DETAILED OTHERWISE, NAILING FOR ADDITIONAL PLYWOOD SHALL BE 10d@8" EDGE, 10d@12" FIELD.
- HDR. - INDICATES HEADER ABOVE SHOWN OPENING, SEE TYPICAL DETAILS.
- ROOF SHEATHING SHALL BE 5/8" PLYWOOD, SEE TYPICAL DETAILS FOR LAYOUT AND NAILING.
- DETAILS IN SHEETS TITLED 'TYPICAL DETAILS', TYPICAL DETAILS AND GENERAL NOTES APPLY TO ALL PARTS OF THE WORK THAT ARE THE SAME OR SIMILAR TO THOSE SPECIFICALLY REFERENCED, EXCEPT WHERE SPECIFICALLY DETAILED OR UNLESS NOTED OTHERWISE.
- D-# INDICATES METAL DECK AND FILL TYPE, SEE TYPICAL DETAILS.  
D-# INDICATES METAL DECK SPAN DIRECTION.
- SEE TYPICAL DETAILS AND ARCHITECTURAL DRAWINGS FOR INFORMATION NOT SHOWN INCLUDING BUT NOT LIMITED TO, ROOF ELEVATIONS, ROOF SLOPE, EDGE OF DECK, ETC.
- D-# INDICATES METAL DECK, SEE TYPICAL DETAILS.  
D-# INDICATES METAL DECK SPAN DIRECTION.
- ⊠ INDICATES OPENING, SEE TYPICAL DETAILS FOR REINFORCING AND ARCHITECTURAL AND MEP DRAWINGS FOR EXACT LOCATION.
- ↔ INDICATES RIGID BEAM CONNECTION, SEE TYPICAL DETAILS.
- X-X INDICATES JOISTS SIZE AND SPACING.  
X-X INDICATES JOIST SPAN DIRECTION.
- INDICATES STEEL STRAP TYPE, SEE TYPICAL DETAIL.
- ALL TOP PLATES AND LEDGERS ARE CONTINUOUS. SEE TYPICAL DETAILS FOR SPLICES U.N.O.

**BLDG B CURVED ROOF FRAMING PLAN**  
SCALE: 1/8" = 1'-0"



**BLDG B ROOF FRAMING PLAN**  
SCALE: 1/8" = 1'-0"



PLOT TIME: 04:58 AM  
 PLOT DATE: 02/02/11  
 PLOT USER: jmelby  
 PLOT DEVICE: HP DesignJet 2550-600  
 PLOT SCALE: 1/8" = 1'-0"  
 PLOT SHEET: 02-112027-15-6  
 PLOT PATH: \\server\projects\2010\1244\Bldg B\Bldg B Roof Framing Plan.dwg  
 PLOT STATUS: OK  
 PLOT MESSAGE: The sheet was successfully plotted.