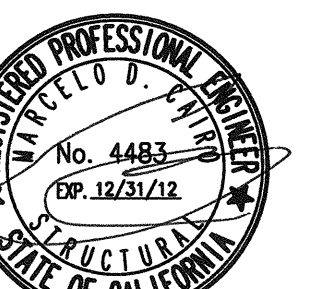




*D. Ordiz*  
DANNY E. ORDIZ, AIA  
ARCHITECT C-14,728  
WILLIAM J. MELBY, AIA  
ARCHITECT C-16,835

IDENTIFICATION STAMP  
DIVISION OF STATE ARCHITECT  
OFFICE OF REGULATION SERVICES  
APPL. #: 02-112027  
FILE #: 15-6  
AC: FLS SS  
DATE: JAN 20 2012  
PTN # 63321-112

**MARTIN & ASSOCIATES**  
JOHN A. MARTIN & ASSOCIATES  
Structural Engineers  
2529 The Old Road, Ste. 316  
Stevenson Ranch, CA 91381  
Phone (661) 260-2846  
Fax (661) 260-2849  
JAMA JOB #13145



**NEW ELEMENTARY SCHOOL**  
9801 HIGHLAND KNOLLS DR.  
BAKERSFIELD CALIFORNIA 93306

**NEW MIDDLE SCHOOL**  
4115 VINELAND ROAD  
BAKERSFIELD CALIFORNIA 93306

FOR:  
**BAKERSFIELD CITY SCHOOL DISTRICT**

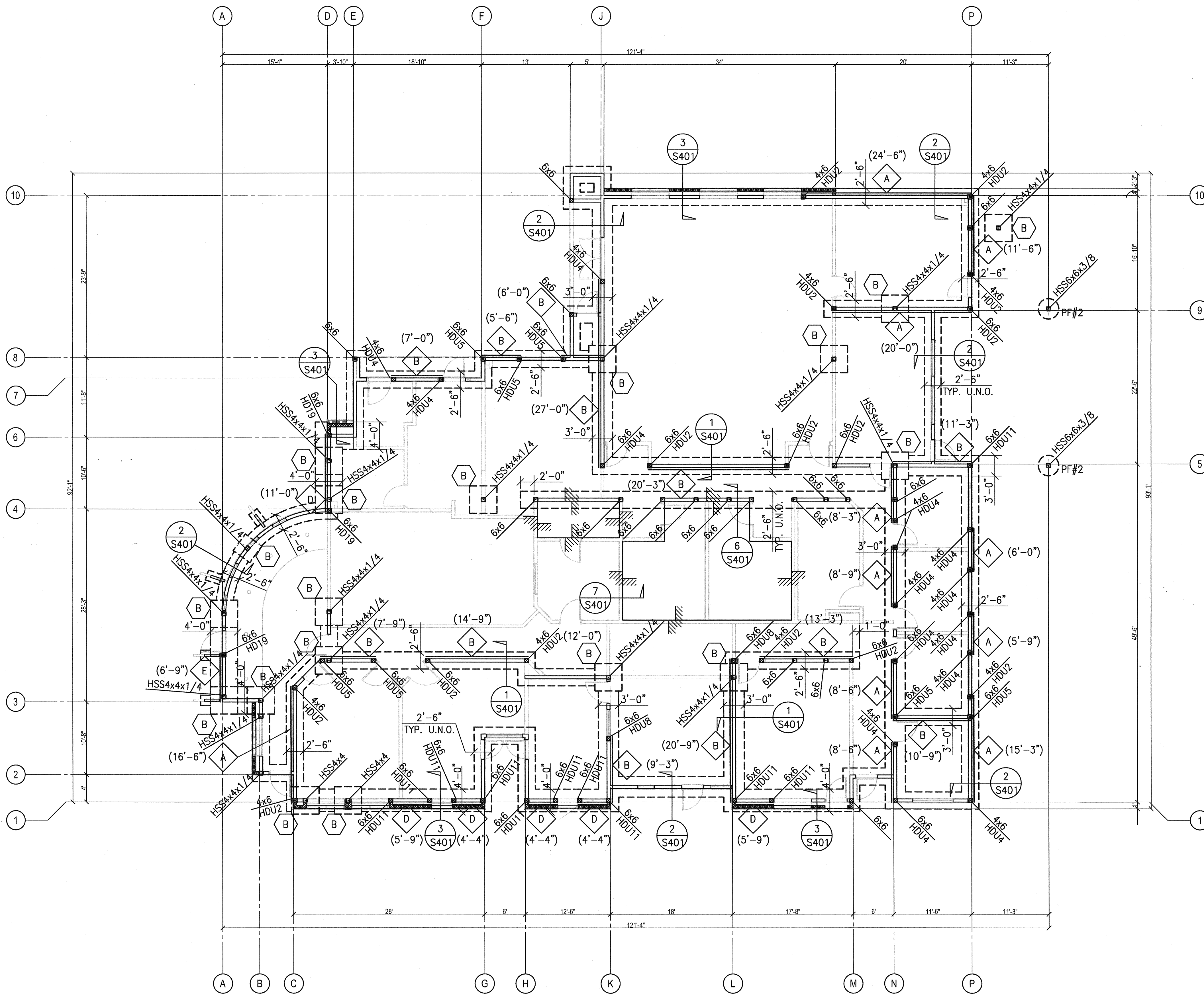
1300 BAKER STREET  
BAKERSFIELD CALIFORNIA 93305

MARK	DATE	DESCRIPTION
△		
△		
△		
△		

JOB NUMBER:  
**20101244**  
CAD DRAWING FILE:  
DRAWN BY:  
RH  
CHECKED BY:  
MDC  
CHECK AND VERIFY ALL DIMENSIONS BEFORE PROCEEDING WITH THE WORK. REPORT DISCREPANCIES TO THE ARCHITECT.  
THE DRAWINGS, IDEAS, AND DESIGNS REPRESENTED ON THIS SHEET ARE THE PROPERTY OF THE ARCHITECT.  
COPYRIGHT  
ORDIZ-MELBY ARCHITECTS, INC. 2010

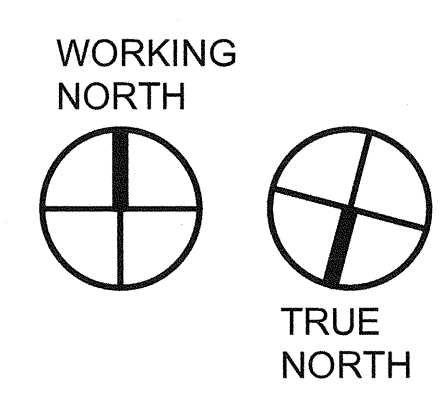
SHEET TITLE  
**BUILDING B  
FOUNDATION PLAN**

SHEET IDENTIFICATION NUMBER  
**S201B**



**NOTES:**

- T.O.F.=XX - INDICATES APPROXIMATE TOP OF FOOTING. ELEVATION FROM GROUND FLOOR FINISH ELEVATION. (+0'-0" DATUM, SEE ARCHITECTURAL DRAWINGS FOR FINISH FLOOR ELEVATION INFORMATION), T.O.F. = -1'-0" TYPICAL, UNLESS NOTED OTHERWISE. THE CONTRACTOR SHALL FIELD VERIFY THE FOOTING DEPTH AND LOWER THE BOTTOM OF FOOTING AS REQUIRED TO CONFORM TO THE GEOTECHNICAL REPORT, FINISH GRADES AS SHOWN IN THE ARCHITECTURAL DRAWINGS AND TYPICAL DETAILS.
- GRADING AND SLAB ON GRADE SHALL SLOPE IN ACCORDANCE WITH ELEVATIONS SHOWN IN ARCHITECTURAL DRAWINGS, TYPICAL.
- SEE TYPICAL DETAILS AND ARCHITECTURAL DRAWINGS FOR INFORMATION NOT SHOWN INCLUDING BUT NOT LIMITED TO, SLAB DEPRESSIONS, SLAB DETAILS, EDGE OF SLAB, SITE WORK, ETC.
- SEE TYPICAL DETAILS FOR CONTROL JOINT REQUIREMENTS AT SLABS ON GRADE.
- GEOTECHNICAL ENGINEER SHALL INSPECT AND APPROVE FOUNDATION EXCAVATION PRIOR TO REQUESTING INSPECTIONS.
- REFER TO GEOTECHNICAL REPORT FOR SUB GRADE PREPARATION REQUIREMENTS.
- DETAILS IN SHEETS TITLED "TYPICAL DETAILS", TYPICAL DETAILS AND GENERAL NOTES APPLY TO ALL PARTS OF THE WORK THAT ARE THE SAME OR SIMILAR TO THOSE SPECIFICALLY REFERENCED, EXCEPT WHERE SPECIFICALLY DETAILED OR UNLESS NOTED OTHERWISE.
- ALL STUD BEARING AND/OR SHEAR WALLS ARE 2x6@16" UNLESS NOTED OTHERWISE.
- INDICATES 2x6@16" SLOPED STUD WALL FRAMING.
- FRAMING PLANS AND STRUCTURAL DRAWINGS INDICATE LOCATION AND EXTENT OF PLYWOOD SHEAR PANELS. IN ADDITION, CONTRACTOR SHALL PROVIDE ADDITIONAL PLYWOOD ADJACENT TO SHEAR PANELS AS REQUIRED TO PROVIDE CONTINUOUS, FLUSH, EVEN SUBSTRATE FOR FINISH MATERIALS. UNLESS SPECIFICALLY DETAILED OTHERWISE, NAILING FOR ADDITIONAL PLYWOOD SHALL BE 10d@6" EDGE, 10d@12" FIELD.
- INDICATES PLYWOOD SHEAR WALL TYPE, SEE TYPICAL DETAILS AND SCHEDULE.  
(X'-X") - INDICATES MINIMUM LENGTH OF SHEAR WALL.
- INDICATES WOOD POST SIZE.
- ALL HOLDDOWNS AND PLYWOOD SHEATHING NAILING SHALL BE INSPECTED BY THE IOR PRIOR TO COVERING.
- INDICATES SHEAR WALL JAMB TYPE. SEE TYPICAL DETAILS AND SCHEDULE.  
INDICATES HOLDDOWN TYPE. SEE TYPICAL DETAILS AND SCHEDULE.
- INDICATES FOOTING TYPE, SEE SCHEDULE AND TYPICAL DETAILS, TYPICAL.
- INDICATES CHANGE OF ELEVATION ON SLAB ON GRADE, SEE TYPICAL DETAILS AND ARCHITECTURAL DRAWINGS.
- INDICATES POLE FOOTING AND POLE FOOTING TYPE, SEE TYPICAL DETAILS AND SCHEDULE.



**1 BLDG B FOUNDATION PLAN**  
SCALE: 1/8" = 1'-0"

PLOT TIME: 1/15/12 10:55 AM  
 PLOT DATE: 1/15/12 10:55 AM  
 PLOT PATH: C:\Users\jordan\Documents\20101244\Bldg B\Bldg B Foundation Plan.dwg