

REQUEST FOR QUOTATION

(Revised June 2019)

Date: 04/08/2024 **M&O Employee Requesting Quote:** Leonard Zasoski, Jr.

Project Name: Garza Elementary Asphalt Slurry & Restriping

Quote Due Date: April 12, 2024 2:00pm **Quote is valid until:** _____

Pursuant to Labor Code § 1720 et. seq., this work is considered a “Public Work” and is subject to the payment of prevailing wages if the total project cost is over \$1,000. Proof of a valid Contractor/Specialty License, DIR Registration, Worker’s Compensation, and liability insurance is required before work can begin.

If awarded, you will be required to enter certified payroll reports (electronically) into the Department of Industrial Relations (DIR) eCPR website located at: <https://apps.dir.ca.gov/ecpr/DAS/AltLogin>

| Quantity | Description/Scope of Work to be Performed | Unit Price | Extended Price |
|---|---|------------|----------------|
| Lump | 1. Provide a base bid for the asphalt slurry and restriping. 2. Provide an alternate bid for filling cracks and patching potholes. Project will be awarded on the base bid only. <ul style="list-style-type: none"> • Attachment “A” showing the area for the Asphalt Slurry • Attachment “B” project schedule. • Attachment “C” scope of work. | | |
| (Attach additional sheets if necessary) BASE BID | | | |
| (Attach additional sheets if necessary) ALTERNATE #1 | | | |

If the District accepts this Quotation for services to be rendered to the District under the amount of \$60,000, I agree with the terms and conditions of the Bakersfield City School District’s Field Contract for Services. (A sample contract will be provided upon request.)

If applicable, initial to acknowledge receipt of addenda(s): #1 _____, #2 _____, #3 _____, and #4 _____.

I certify that I have inspected the work site; have met with the District representative; and fully understand the entire scope of work to be performed. I also confirm that I possess all of the proper licenses and certifications that are necessary to complete this work.

Please type or print legibly

Company Name: _____

Address: _____

Contractor’s License No.: _____ DIR Registration No.: _____ Tax ID: _____

Contact Person: _____ Phone No: _____ Fax No.: _____

E-mail address (Must include): _____

Signature of Authorized Person: _____ Date: _____

REQUEST FOR QUOTATION (cont.)

(Revised January 2019)

**DIR Classification(s) of workers to be utilized.
Check all that apply.**

| | | | |
|---|---|--|---|
| <input type="checkbox"/> Asbestos | <input type="checkbox"/> Bricklayers | <input type="checkbox"/> Carpenters | <input type="checkbox"/> Carpet/Linoleum |
| <input type="checkbox"/> Cement Masons | <input type="checkbox"/> Drywall Finisher | <input type="checkbox"/> Drywall Lather | <input type="checkbox"/> Electrician |
| <input type="checkbox"/> Elevator Mechanic | <input type="checkbox"/> Glazier | <input type="checkbox"/> Iron Worker | <input type="checkbox"/> Laborer |
| <input type="checkbox"/> Landscape Maint. | <input type="checkbox"/> Operating Engineer | <input type="checkbox"/> Modular Furn. Installer | <input type="checkbox"/> Painter |
| <input type="checkbox"/> Pipe Trades/Plumber | <input type="checkbox"/> Plaster | <input type="checkbox"/> Roofers | <input type="checkbox"/> Sheet metal/HVAC |
| <input type="checkbox"/> Sound/Communications | <input type="checkbox"/> Surveyors | <input type="checkbox"/> Teamster | <input type="checkbox"/> Telecom Technician |
| <input type="checkbox"/> Tile Workers | | | |

Classifications and wage rates can be found at: <http://www.dir.ca.gov/oprl/PWD/index.htm>

DIR Prevailing Wage Hot Line: (415) 703-4774

Important Notice: California new law (SB 854) provides that, "A contractor or subcontractor shall not be qualified to bid on, be listed in a bid proposal, subject to the requirements of Section 4104 of the Public Contract Code, or engage in the performance of any contract for public work, as defined in this chapter, unless currently registered and qualified to perform public work pursuant to Labor Code Section 1725.5." Please go to <http://www.dir.ca.gov/Public-Works/PublicWorks.html> for more information and to register. This project is subject to monitoring by the Department of Industrial Relations.

BCSD Office Use:

Accepted by Bakersfield City School District:

Print Name and Title: Leonard Zasoski, Jr. – Assistant Director II, Maintenance, Operations & Facilities

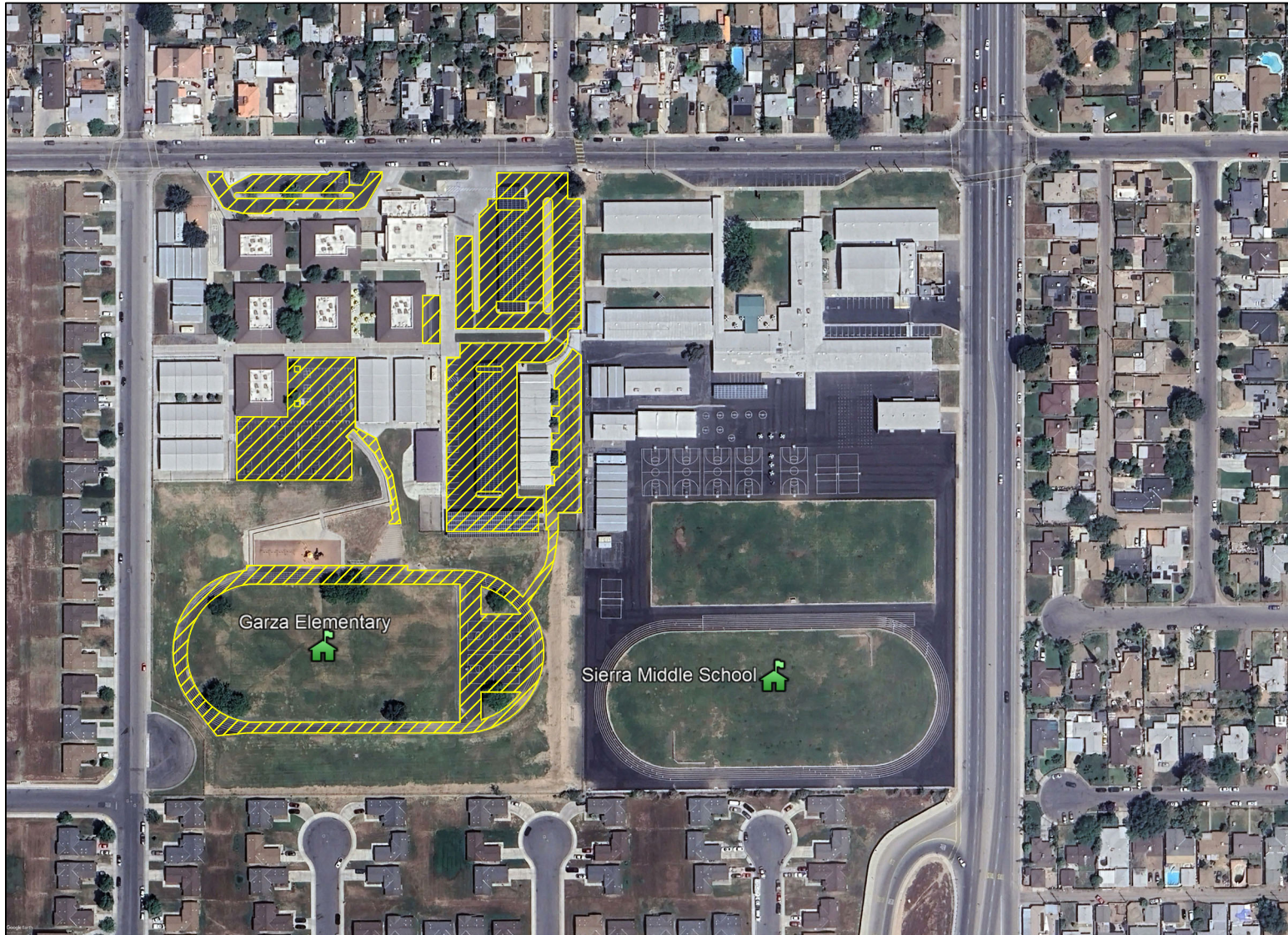
Signature: _____ Date: _____

Budget Code: _____ PO/Contract No.: _____

Est. Project Start Date: _____ Est. Project End Date: _____

PWC-100 Processing Date: _____

PWC-100 Data Entry Website: <https://www.dir.ca.gov/pwc100ext/>



Asphalt Area: $\pm 170,925$ sq. ft.

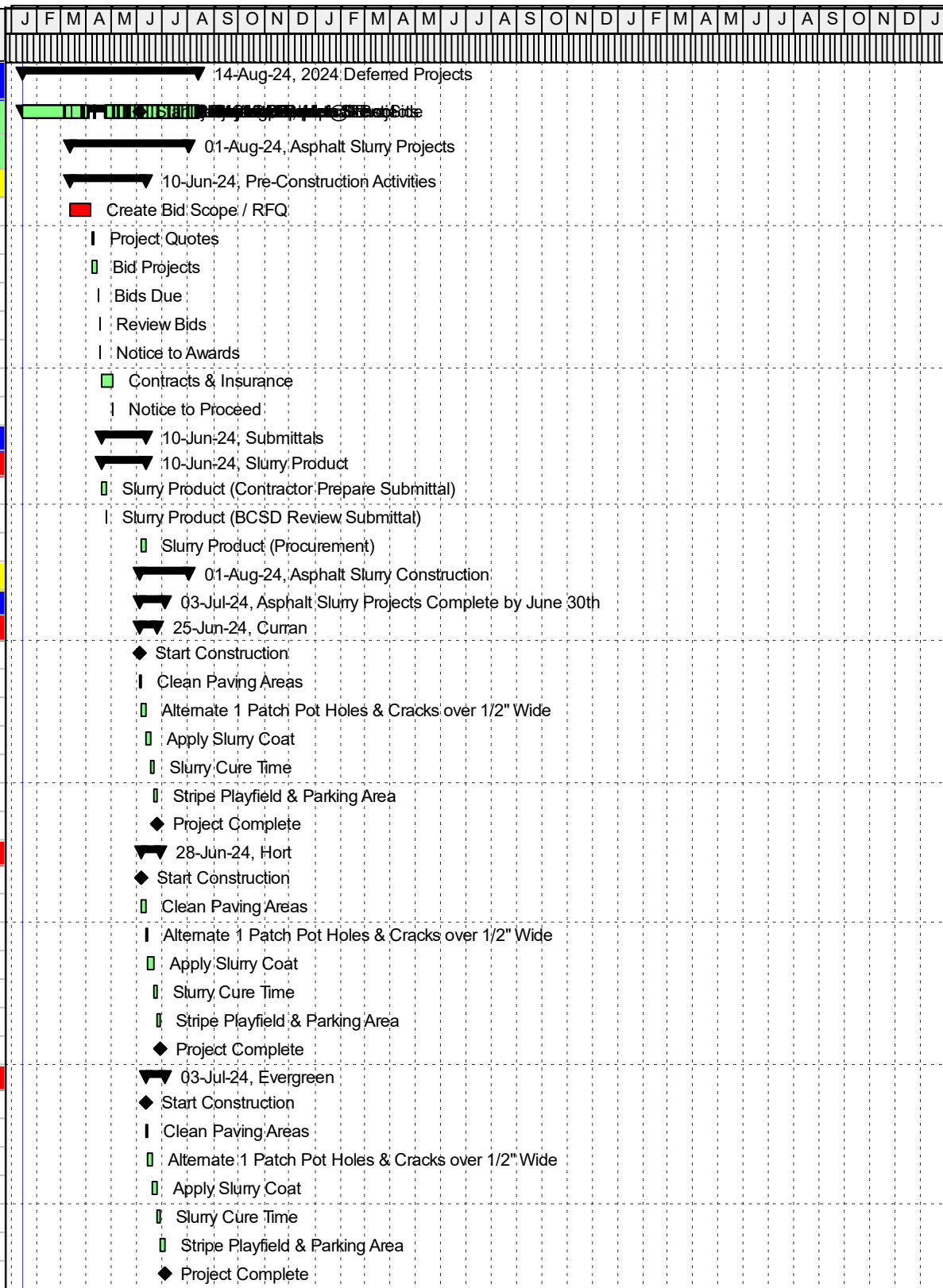
GARZA ELEMENTARY SCHOOL

ASPHALT SLURRY

3-13-24



| Activity ID | Act. Assignment | Activity Name | Original Duration | Start | Finish | J | F | M | A | M | J | J | A | S | O | N | D | J | F | M | A | M | J | J | A | S | O | N | D | J | F | M | A | M | J | J | A | S | O | N | D | J |
|--|----------------------|---|-------------------|------------|-----------|------------------------------------|---|---|---|---|---|---|---|---|---|---|---|---|---|---|---|---|---|---|---|---|---|---|---|---|---|---|---|---|---|---|---|---|---|---|---|---|
| 2024 Deferred Projects | | | | | | 14-Aug-24, 2024: Deferred Projects | | | | | | | | | | | | | | | | | | | | | | | | | | | | | | | | | | | | |
| Asphalt Projects | | | | | | 150 15-Jan-24 14-Aug-24 | | | | | | | | | | | | | | | | | | | | | | | | | | | | | | | | | | | | |
| Asphalt Slurry Projects | | | | | | 104 11-Mar-24 01-Aug-24 | | | | | | | | | | | | | | | | | | | | | | | | | | | | | | | | | | | | |
| Pre-Construction Activities | | | | | | 65 11-Mar-24 10-Jun-24 | | | | | | | | | | | | | | | | | | | | | | | | | | | | | | | | | | | | |
| ASPC-1000 | BCSD | Create Bid Scope / RFQ | 20 | 11-Mar-24* | 05-Apr-24 | 14-Aug-24, 2024: Deferred Projects | | | | | | | | | | | | | | | | | | | | | | | | | | | | | | | | | | | | |
| ASPC-1010 | BCSD | Project Quotes | 1 | 08-Apr-24 | 08-Apr-24 | 14-Aug-24, 2024: Deferred Projects | | | | | | | | | | | | | | | | | | | | | | | | | | | | | | | | | | | | |
| ASPC-1020 | Contractors | Bid Projects | 5 | 08-Apr-24 | 12-Apr-24 | 14-Aug-24, 2024: Deferred Projects | | | | | | | | | | | | | | | | | | | | | | | | | | | | | | | | | | | | |
| ASPC-1040 | Contractors | Bids Due | 1 | 15-Apr-24 | 15-Apr-24 | 14-Aug-24, 2024: Deferred Projects | | | | | | | | | | | | | | | | | | | | | | | | | | | | | | | | | | | | |
| ASPC-1050 | BCSD | Review Bids | 1 | 16-Apr-24 | 16-Apr-24 | 14-Aug-24, 2024: Deferred Projects | | | | | | | | | | | | | | | | | | | | | | | | | | | | | | | | | | | | |
| ASPC-1060 | General | Notice to Awards | 1 | 17-Apr-24 | 17-Apr-24 | 14-Aug-24, 2024: Deferred Projects | | | | | | | | | | | | | | | | | | | | | | | | | | | | | | | | | | | | |
| ASPC-1070 | BCSD | Contracts & Insurance | 10 | 18-Apr-24 | 01-May-24 | 14-Aug-24, 2024: Deferred Projects | | | | | | | | | | | | | | | | | | | | | | | | | | | | | | | | | | | | |
| ASPC-1080 | BCSD | Notice to Proceed | 1 | 02-May-24 | 02-May-24 | 14-Aug-24, 2024: Deferred Projects | | | | | | | | | | | | | | | | | | | | | | | | | | | | | | | | | | | | |
| Submittals | | | | | | 37 18-Apr-24 10-Jun-24 | | | | | | | | | | | | | | | | | | | | | | | | | | | | | | | | | | | | |
| Slurry Product | | | | | | 37 18-Apr-24 10-Jun-24 | | | | | | | | | | | | | | | | | | | | | | | | | | | | | | | | | | | | |
| SLU-1000 | Contractors | Slurry Product (Contractor Prepare Submittal) | 5 | 18-Apr-24 | 24-Apr-24 | 14-Aug-24, 2024: Deferred Projects | | | | | | | | | | | | | | | | | | | | | | | | | | | | | | | | | | | | |
| SLU-1010 | BCSD | Slurry Product (BCSD Review Submittal) | 1 | 25-Apr-24 | 25-Apr-24 | 14-Aug-24, 2024: Deferred Projects | | | | | | | | | | | | | | | | | | | | | | | | | | | | | | | | | | | | |
| SLU-1020 | Contractors | Slurry Product (Procurement) | 2 | 06-Jun-24 | 10-Jun-24 | 14-Aug-24, 2024: Deferred Projects | | | | | | | | | | | | | | | | | | | | | | | | | | | | | | | | | | | | |
| Asphalt Slurry Construction | | | | | | 44 03-Jun-24 01-Aug-24 | | | | | | | | | | | | | | | | | | | | | | | | | | | | | | | | | | | | |
| Asphalt Slurry Projects Complete by June 30th | | | | | | 23 03-Jun-24 03-Jul-24 | | | | | | | | | | | | | | | | | | | | | | | | | | | | | | | | | | | | |
| Curran | | | | | | 17 03-Jun-24 25-Jun-24 | | | | | | | | | | | | | | | | | | | | | | | | | | | | | | | | | | | | |
| C-1000 | General | Start Construction | 0 | 03-Jun-24* | | 14-Aug-24, 2024: Deferred Projects | | | | | | | | | | | | | | | | | | | | | | | | | | | | | | | | | | | | |
| C-1010 | BP 01 Asphalt Slurry | Clean Paving Areas | 3 | 03-Jun-24 | 05-Jun-24 | 14-Aug-24, 2024: Deferred Projects | | | | | | | | | | | | | | | | | | | | | | | | | | | | | | | | | | | | |
| C-1001 | BP 01 Asphalt Slurry | Alternate 1 Patch Pot Holes & Cracks over 1/2" Wide | 3 | 06-Jun-24 | 10-Jun-24 | 14-Aug-24, 2024: Deferred Projects | | | | | | | | | | | | | | | | | | | | | | | | | | | | | | | | | | | | |
| C-1020 | BP 01 Asphalt Slurry | Apply Slurry Coat | 5 | 10-Jun-24 | 17-Jun-24 | 14-Aug-24, 2024: Deferred Projects | | | | | | | | | | | | | | | | | | | | | | | | | | | | | | | | | | | | |
| C-1030 | BP 01 Asphalt Slurry | Slurry Cure Time | 3 | 17-Jun-24 | 20-Jun-24 | 14-Aug-24, 2024: Deferred Projects | | | | | | | | | | | | | | | | | | | | | | | | | | | | | | | | | | | | |
| C-1040 | BP 01 Asphalt Slurry | Stripe Playfield & Parking Area | 3 | 20-Jun-24 | 25-Jun-24 | 14-Aug-24, 2024: Deferred Projects | | | | | | | | | | | | | | | | | | | | | | | | | | | | | | | | | | | | |
| C-1050 | General | Project Complete | 0 | | 25-Jun-24 | 14-Aug-24, 2024: Deferred Projects | | | | | | | | | | | | | | | | | | | | | | | | | | | | | | | | | | | | |
| Hort | | | | | | 17 06-Jun-24 28-Jun-24 | | | | | | | | | | | | | | | | | | | | | | | | | | | | | | | | | | | | |
| H-1000 | General | Start Construction | 0 | 06-Jun-24 | | 14-Aug-24, 2024: Deferred Projects | | | | | | | | | | | | | | | | | | | | | | | | | | | | | | | | | | | | |
| H-1010 | BP 01 Asphalt Slurry | Clean Paving Areas | 3 | 06-Jun-24 | 10-Jun-24 | 14-Aug-24, 2024: Deferred Projects | | | | | | | | | | | | | | | | | | | | | | | | | | | | | | | | | | | | |
| H-1120 | BP 01 Asphalt Slurry | Alternate 1 Patch Pot Holes & Cracks over 1/2" Wide | 3 | 11-Jun-24 | 13-Jun-24 | 14-Aug-24, 2024: Deferred Projects | | | | | | | | | | | | | | | | | | | | | | | | | | | | | | | | | | | | |
| H-1020 | BP 01 Asphalt Slurry | Apply Slurry Coat | 5 | 13-Jun-24 | 20-Jun-24 | 14-Aug-24, 2024: Deferred Projects | | | | | | | | | | | | | | | | | | | | | | | | | | | | | | | | | | | | |
| H-1030 | BP 01 Asphalt Slurry | Slurry Cure Time | 3 | 20-Jun-24 | 25-Jun-24 | 14-Aug-24, 2024: Deferred Projects | | | | | | | | | | | | | | | | | | | | | | | | | | | | | | | | | | | | |
| H-1040 | BP 01 Asphalt Slurry | Stripe Playfield & Parking Area | 3 | 25-Jun-24 | 28-Jun-24 | 14-Aug-24, 2024: Deferred Projects | | | | | | | | | | | | | | | | | | | | | | | | | | | | | | | | | | | | |
| H-1050 | General | Project Complete | 0 | | 28-Jun-24 | 14-Aug-24, 2024: Deferred Projects | | | | | | | | | | | | | | | | | | | | | | | | | | | | | | | | | | | | |
| Evergreen | | | | | | 17 11-Jun-24 03-Jul-24 | | | | | | | | | | | | | | | | | | | | | | | | | | | | | | | | | | | | |
| E-1000 | General | Start Construction | 0 | 11-Jun-24 | | 14-Aug-24, 2024: Deferred Projects | | | | | | | | | | | | | | | | | | | | | | | | | | | | | | | | | | | | |
| E-1010 | BP 01 Asphalt Slurry | Clean Paving Areas | 3 | 11-Jun-24 | 13-Jun-24 | 14-Aug-24, 2024: Deferred Projects | | | | | | | | | | | | | | | | | | | | | | | | | | | | | | | | | | | | |
| E-1060 | BP 01 Asphalt Slurry | Alternate 1 Patch Pot Holes & Cracks over 1/2" Wide | 3 | 14-Jun-24 | 18-Jun-24 | 14-Aug-24, 2024: Deferred Projects | | | | | | | | | | | | | | | | | | | | | | | | | | | | | | | | | | | | |
| E-1020 | BP 01 Asphalt Slurry | Apply Slurry Coat | 5 | 18-Jun-24 | 25-Jun-24 | 14-Aug-24, 2024: Deferred Projects | | | | | | | | | | | | | | | | | | | | | | | | | | | | | | | | | | | | |
| E-1030 | BP 01 Asphalt Slurry | Slurry Cure Time | 3 | 25-Jun-24 | 28-Jun-24 | 14-Aug-24, 2024: Deferred Projects | | | | | | | | | | | | | | | | | | | | | | | | | | | | | | | | | | | | |
| E-1040 | BP 01 Asphalt Slurry | Stripe Playfield & Parking Area | 3 | 28-Jun-24 | 03-Jul-24 | 14-Aug-24, 2024: Deferred Projects | | | | | | | | | | | | | | | | | | | | | | | | | | | | | | | | | | | | |
| E-1050 | General | Project Complete | 0 | | 03-Jul-24 | 14-Aug-24, 2024: Deferred Projects | | | | | | | | | | | | | | | | | | | | | | | | | | | | | | | | | | | | |





| Activity ID | Act. Assignment | Activity Name | Original Duration | Start | Finish | J | F | M | A | M | J | J | A | S | O | N | D | J | F | M | A | M | J | J | A | S | O | N | D | J | F | M | A | M | J | J | A | S | O | N | D | J |
|--|----------------------|---|-------------------|------------|-----------|--|---|---|---|---|---|---|---|---|---|---|---|---|---|---|---|---|---|---|---|---|---|---|---|---|---|---|---|---|---|---|---|---|---|---|---|---|
| Asphalt Slurry Projects Starting After July 1st | | | 24 | 01-Jul-24 | 01-Aug-24 | ▼ 01-Aug-24, Asphalt Slurry Projects Starting After July 1st | | | | | | | | | | | | | | | | | | | | | | | | | | | | | | | | | | | | |
| Garza | | | 17 | 01-Jul-24 | 23-Jul-24 | ▼ 23-Jul-24, Garza | | | | | | | | | | | | | | | | | | | | | | | | | | | | | | | | | | | | |
| G-1000 | General | Start Construction | 0 | 01-Jul-24* | | ◆ Start Construction | | | | | | | | | | | | | | | | | | | | | | | | | | | | | | | | | | | | |
| G-1010 | BP 01 Asphalt Slurry | Clean Paving Areas | 3 | 01-Jul-24 | 03-Jul-24 | ▮ Clean Paving Areas | | | | | | | | | | | | | | | | | | | | | | | | | | | | | | | | | | | | |
| G-1060 | BP 01 Asphalt Slurry | Alternate 1 Patch Pot Holes & Cracks over 1/2" Wide | 3 | 04-Jul-24 | 08-Jul-24 | ▮ Alternate 1 Patch Pot Holes & Cracks over 1/2" Wide | | | | | | | | | | | | | | | | | | | | | | | | | | | | | | | | | | | | |
| G-1020 | BP 01 Asphalt Slurry | Apply Slurry Coat | 5 | 08-Jul-24 | 15-Jul-24 | ▮ Apply Slurry Coat | | | | | | | | | | | | | | | | | | | | | | | | | | | | | | | | | | | | |
| G-1030 | BP 01 Asphalt Slurry | Slurry Cure Time | 3 | 15-Jul-24 | 18-Jul-24 | ▮ Slurry Cure Time | | | | | | | | | | | | | | | | | | | | | | | | | | | | | | | | | | | | |
| G-1040 | BP 01 Asphalt Slurry | Stripe Playfield & Parking Area | 3 | 18-Jul-24 | 23-Jul-24 | ▮ Stripe Playfield & Parking Area | | | | | | | | | | | | | | | | | | | | | | | | | | | | | | | | | | | | |
| G-1050 | General | Project Complete | 0 | | 23-Jul-24 | ◆ Project Complete | | | | | | | | | | | | | | | | | | | | | | | | | | | | | | | | | | | | |
| Harris | | | 17 | 05-Jul-24 | 29-Jul-24 | ▼ 29-Jul-24, Harris | | | | | | | | | | | | | | | | | | | | | | | | | | | | | | | | | | | | |
| H-1060 | General | Start Construction | 0 | 05-Jul-24 | | ◆ Start Construction | | | | | | | | | | | | | | | | | | | | | | | | | | | | | | | | | | | | |
| H-1070 | BP 01 Asphalt Slurry | Clean Paving Areas | 3 | 05-Jul-24 | 09-Jul-24 | ▮ Clean Paving Areas | | | | | | | | | | | | | | | | | | | | | | | | | | | | | | | | | | | | |
| H-1130 | BP 01 Asphalt Slurry | Alternate 1 Patch Pot Holes & Cracks over 1/2" Wide | 3 | 10-Jul-24 | 12-Jul-24 | ▮ Alternate 1 Patch Pot Holes & Cracks over 1/2" Wide | | | | | | | | | | | | | | | | | | | | | | | | | | | | | | | | | | | | |
| H-1080 | BP 01 Asphalt Slurry | Apply Slurry Coat | 5 | 12-Jul-24 | 19-Jul-24 | ▮ Apply Slurry Coat | | | | | | | | | | | | | | | | | | | | | | | | | | | | | | | | | | | | |
| H-1090 | BP 01 Asphalt Slurry | Slurry Cure Time | 3 | 19-Jul-24 | 24-Jul-24 | ▮ Slurry Cure Time | | | | | | | | | | | | | | | | | | | | | | | | | | | | | | | | | | | | |
| H-1100 | BP 01 Asphalt Slurry | Stripe Playfield & Parking Area | 3 | 24-Jul-24 | 29-Jul-24 | ▮ Stripe Playfield & Parking Area | | | | | | | | | | | | | | | | | | | | | | | | | | | | | | | | | | | | |
| H-1110 | General | Project Complete | 0 | | 29-Jul-24 | ◆ Project Complete | | | | | | | | | | | | | | | | | | | | | | | | | | | | | | | | | | | | |
| Jefferson | | | 17 | 10-Jul-24 | 01-Aug-24 | ▼ 01-Aug-24, Jefferson | | | | | | | | | | | | | | | | | | | | | | | | | | | | | | | | | | | | |
| J-1000 | General | Start Construction | 0 | 10-Jul-24 | | ◆ Start Construction | | | | | | | | | | | | | | | | | | | | | | | | | | | | | | | | | | | | |
| J-1010 | BP 01 Asphalt Slurry | Clean Paving Areas | 3 | 10-Jul-24 | 12-Jul-24 | ▮ Clean Paving Areas | | | | | | | | | | | | | | | | | | | | | | | | | | | | | | | | | | | | |
| J-1060 | BP 01 Asphalt Slurry | Alternate 1 Patch Pot Holes & Cracks over 1/2" Wide | 3 | 15-Jul-24 | 17-Jul-24 | ▮ Alternate 1 Patch Pot Holes & Cracks over 1/2" Wide | | | | | | | | | | | | | | | | | | | | | | | | | | | | | | | | | | | | |
| J-1020 | BP 01 Asphalt Slurry | Apply Slurry Coat | 5 | 17-Jul-24 | 24-Jul-24 | ▮ Apply Slurry Coat | | | | | | | | | | | | | | | | | | | | | | | | | | | | | | | | | | | | |
| J-1030 | BP 01 Asphalt Slurry | Slurry Cure Time | 3 | 24-Jul-24 | 29-Jul-24 | ▮ Slurry Cure Time | | | | | | | | | | | | | | | | | | | | | | | | | | | | | | | | | | | | |
| J-1040 | BP 01 Asphalt Slurry | Stripe Playfield & Parking Area | 3 | 29-Jul-24 | 01-Aug-24 | ▮ Stripe Playfield & Parking Area | | | | | | | | | | | | | | | | | | | | | | | | | | | | | | | | | | | | |
| J-1050 | General | Project Complete | 0 | | 01-Aug-24 | ◆ Project Complete | | | | | | | | | | | | | | | | | | | | | | | | | | | | | | | | | | | | |
| Washington Middle School | | | 150 | 15-Jan-24 | 14-Aug-24 | ▮ Washington Middle School | | | | | | | | | | | | | | | | | | | | | | | | | | | | | | | | | | | | |
| McKinley Projects | | | 152 | 15-Jan-24 | 14-Aug-24 | ▮ McKinley Projects | | | | | | | | | | | | | | | | | | | | | | | | | | | | | | | | | | | | |
| Cato - Sport Court Restripe | | | 89 | 01-Apr-24 | 05-Aug-24 | ▮ Cato - Sport Court Restripe | | | | | | | | | | | | | | | | | | | | | | | | | | | | | | | | | | | | |
| Emerson Projects | | | 69 | 18-Mar-24 | 21-Jun-24 | ▮ Emerson Projects | | | | | | | | | | | | | | | | | | | | | | | | | | | | | | | | | | | | |
| Fall Material @ Elementary Playgrounds | | | 104 | 19-Feb-24 | 15-Jul-24 | ▮ Fall Material @ Elementary Playgrounds | | | | | | | | | | | | | | | | | | | | | | | | | | | | | | | | | | | | |
| Fall Mats @ Elementary Playgrounds | | | 94 | 04-Mar-24 | 15-Jul-24 | ▮ Fall Mats @ Elementary Playgrounds | | | | | | | | | | | | | | | | | | | | | | | | | | | | | | | | | | | | |
| Site Sweeping | | | 82 | 15-Apr-24 | 08-Aug-24 | ▮ Site Sweeping | | | | | | | | | | | | | | | | | | | | | | | | | | | | | | | | | | | | |

Garza - Asphalt Slurry 2024

Scope of Work

General Items:

- Summer working hours shall be 6:00 a.m. to 2:30 p.m. or on an agreed upon time between the contractor and the district.
- **Construction schedule provided by BCSD. See Attachment "B"**
- Apply two coats of slurry with slurry buggy over at each site.
- Thoroughly clean the asphalt prior to the slurry application.
- Slurry material not to be greater than 25%.
- No line bleed through from existing striping.
- Contractor will redo all striping covered by the slurry to match existing layouts after the asphalt slurry work.
- Prior to asphalt slurry placement, contractor to field verify and confirm layout of all markings on the pavement by field measurements and pictures.
- See **Attachment "A"** for area to receive the slurry coat. **Note: Contractor shall be responsible for all quantities and measurements.**

Alternate:

- Provide an alternate bid to patch asphalt cracks ½" and larger, potholes prior to the slurry application. **Note: Project will be awarded on the base bid only.**
- If you would like to visit the site, please contact Brenda Orozco at (661)631-5883 to schedule the site visit.

Protection:

- The Contractor shall always take all precautions to avoid damaging structures around the work area. The Contractor shall be responsible for, and liable for, all damage or ill effects caused by a lack of adequate protection against the hazards associated with their work. The Contractor shall carry adequate insurance and he shall protect the district from all liens or damages arising from or caused by his work.

Disposal:

- The Contractor shall thoroughly clean the area as work progresses. After completion of work, the Contractor shall remove all debris resulting from this work and shall remove all splatters or spills from other surfaces adjacent to the work. The buildings and the site premises shall be left in a condition that is acceptable to the district.