

Asphalt Slurry Projects Job Walk Questions

All Sites

- **Question**-What product is to be used for the crack filler?
- **Answer**-Below are a couple of suggestions. The contractor can also submit an alternate hot applied product for approval.
 - Hot applied crack filler Elastoflex 670 or equivalent
 - SealMaster Crackmaster PL-HT Hot Pour Crack Sealant SMT-313
 - Attachment A-Elastoflex 670 Data Sheet
- **Question**-Are the handicap parking blocks that are already painted blue?
- **Answer**-Existing parking bumpers painted blue are to be repainted blue after the slurry.

Jefferson Elementary

- **Site Review**-Patch back asphalt per attached map.
 - Approximately 700 square feet at 1" thick asphalt product cap
 - Fog seal
 - Attachment B-Jefferson Asphalt Patch

Evergreen Elementary

- See additional area to have a slurry coat that was not part of the original site map.
 - See revised site map showing the additional area.
 - Attachment C-Asphalt Evergreen-R1

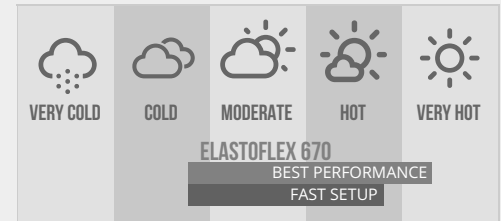
MAXWELL PRODUCTS

ELASTOFLEX 670

DATA SHEET

MAXWELL PRODUCTS, INC.
SALT LAKE CITY, UT
800.266.2090

Elastoflex 670 is a hot applied, polymer modified crack and joint sealant for use with asphalt and concrete pavements. This product applies and sets up best in up to hot temperatures, and is highly durable in cold to very hot climates. Elastoflex 670 is self leveling, fast setting and quick melting. Formulated with a medium viscosity for all-round ease of application, it is ideal for highways, county roads, municipal streets, parking lots and pathways. Elastoflex 670 delivers high performance at a moderate cost.



SPECIFICATION

TEST METHOD:	RESULT:
CONE PENETRATION : 77°F (25°C), 150G, 5S : ASTM D5329	30 DMM MAX
SOFTENING POINT : ASTM D36	210°F (99°C) MIN
FLEXIBILITY : 1 IN (25MM) MANDREL, 90 DEG BEND, 2S : ASTM D3111	PASS 30°F (-1°C)
DUCTILITY : 77°F (25°C) : ASTM D113	25 CM MIN
RESILIENCE : 77°F (25°C) : ASTM D5329	30% MIN
ASPHALT COMPATIBILITY : 140°F (60°C), 72 HR : ASTM D5329	PASS

APPLICATION INSTRUCTIONS

Read and follow application instructions before use. This product must be heated using indirect heating methods, either a double boiler or hot oil circulating kettle. Equipment must have means of maintaining constant agitation to the material.

Maximum safe heating temperature: 400°F (204°C).

Recommended application temperature: 380°F (193°C).

WARRANTY

Maxwell Products, Inc. warrants that our products will be free from defects in material or workmanship and will conform to our published specifications at the time of shipment. In the event our products fail to conform to our published specifications at the time of shipment, we will, at our expense and sole option, replace our defective product or give you a full or partial refund of the purchase price from Maxwell Products. Claims must be made within three (3) months of the date of purchase. MAXWELL PRODUCTS HEREBY DISCLAIMS ALL OTHER WARRANTIES, EXPRESS OR IMPLIED, INCLUDING, BUT NOT LIMITED TO, ANY IMPLIED WARRANTY OF MERCHANTABILITY AND ANY IMPLIED WARRANTY OF FITNESS FOR A PARTICULAR PURPOSE.

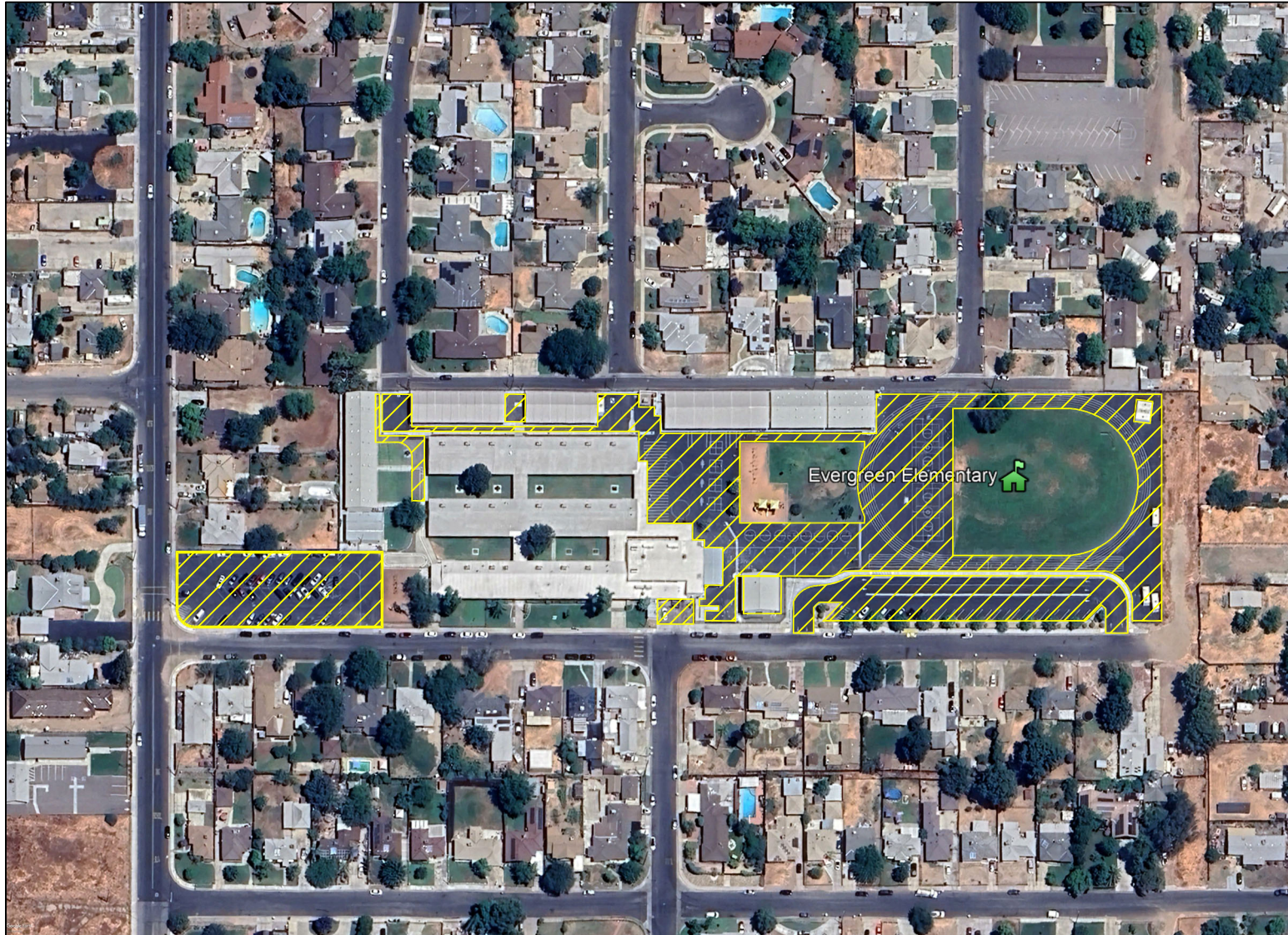
Generated January 28, 2019.

Please visit <http://maxwellproducts.com> for the current version of this document.



Measure distance
 Total area: 670.19 ft² (62.26 m²)
 Total distance: 185.49 ft (56.54 m)

Imagery ©2024 Google, Map data ©2024, Map data ©2024 10 ft



Asphalt Area: ± 137,785 sq. ft.

EVERGREEN ELEMENTARY SCHOOL

ASPHALT SLURRY

4-11-24