

# INSL24UL

24VDC Industrial Slide Gate Operator Section 32 31 00



DATA SHEET

### Key Features

- Steel Cabinet**: Weatherproof 14 gauge, NEMA 3R steel cabinet. Yes.
- Battery Backup**: Security+ 2.0\* 3-channel receiver will handle up to 50 remote controls (unlimited remotes with B11L/MX/B13L/MX).
- Remote Control Access**: myQ\* Facility cloud connection and myQ capability for secure monitoring and control of gate operator from anywhere\*.
- Internet Connectivity**: 6 inputs (main and expansion board).
- Monitored Safety Devices**: Yes. LED diagnostic display.
- Solar-Power Capabilities**: Eliminates expensive conduit costs and unsightly driveway scars.
- Diagnostic Display**: Bi-part delay or synchronized close.
- Wireless Dual-Gate Communication**: Allows gate to auto open upon loss of AC power or battery depletion; includes manual release.
- Dual-Gate Control**: Electronic.
- Fire Department Compliant**: LED diagnostic display.
- Limit Setting**: 2 programmable auxiliary relays accommodate more accessories such as warning lights/alarms.
- Diagnostic Display**: Can be programmed with anti-tailgate or quick close capabilities.
- Programable Auxiliary Relays**: Version 4 or higher.
- Unauthorized Access Prevention**: HomeLink\* Capability.

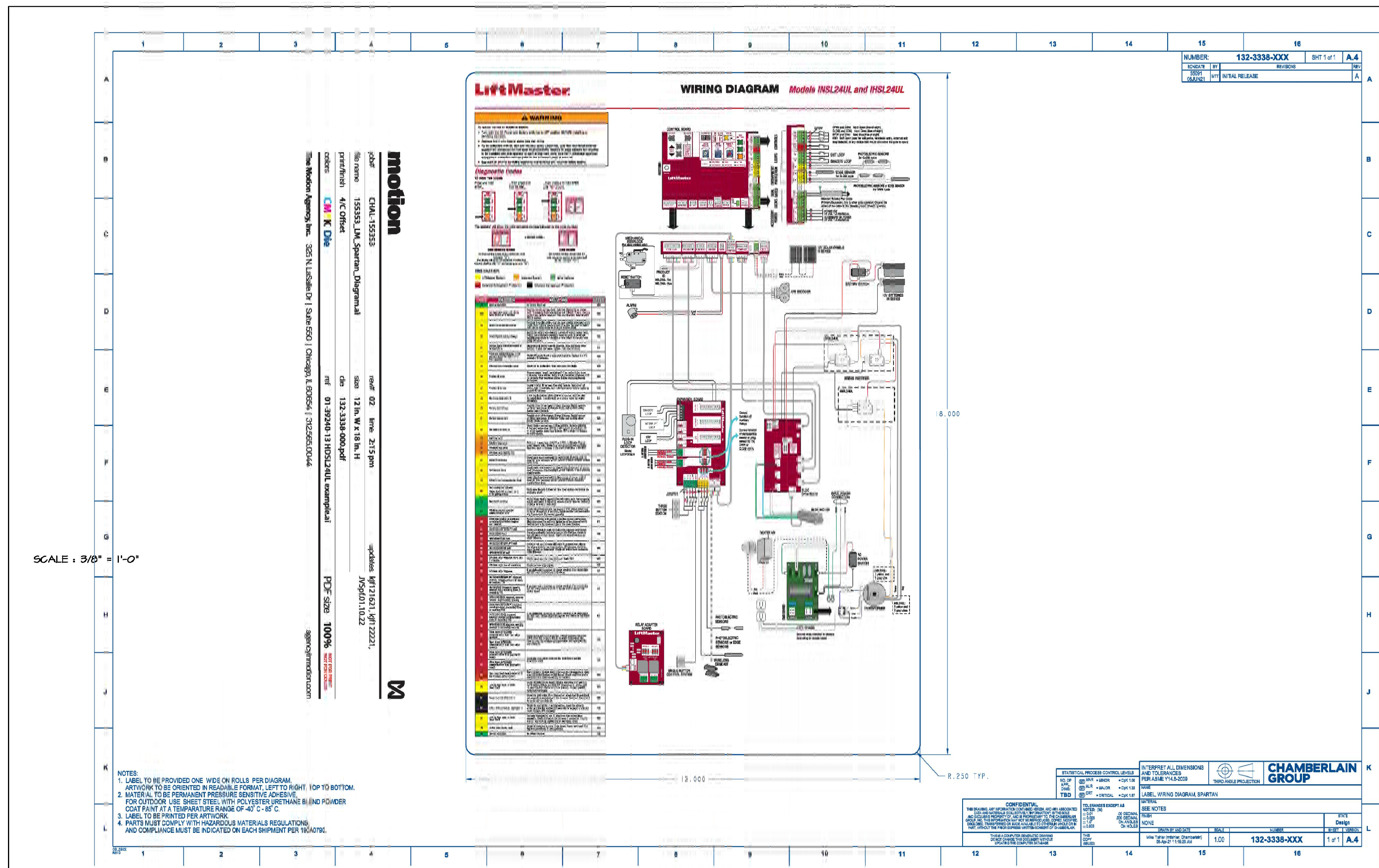
### Specifications

- Operator Speed**: 0.5 ft/sec to 1 ft/sec.
- Power**: 120V/240VAC single phase, optional 3 phase kit for 208/230/480VAC and 575VAC.
- Accessory Power**: 24VDC 1 A max. output; switched and unswitched power.
- Operator Weight**: 129 lbs.
- Warranty**: 5 years.
- Temperature Specification**: Without heater -4°F (-20°C) to 140°F (60°C); with optional heater -40°F (-40°C) to 140°F (60°C).
- UL Usage Classification**: II, III, IV.

### Construction

- Motor**: 24VDC brushless motor with soft start/stop.
- Operator Duty Rating**: Continuous-duty.
- Chassis/Frame**: Constructed with 1/4 in. powder coated steel for rust prevention.
- Gear Reduction**: Direct drive 42:1 gear ratio.
- Cover/Cabinet**: Powder-coated, 14 gauge steel cabinet, oil tight, weatherproof.
- Chain**: NEMA 3R lockable cabine.
- Recommended Capacities**: #40. Rated for gates up to 70 ft. in length and weighing up to 2200 lbs.

\*When linked with myQ Facility capable access control. Cellular data or Wi-Fi connection required.



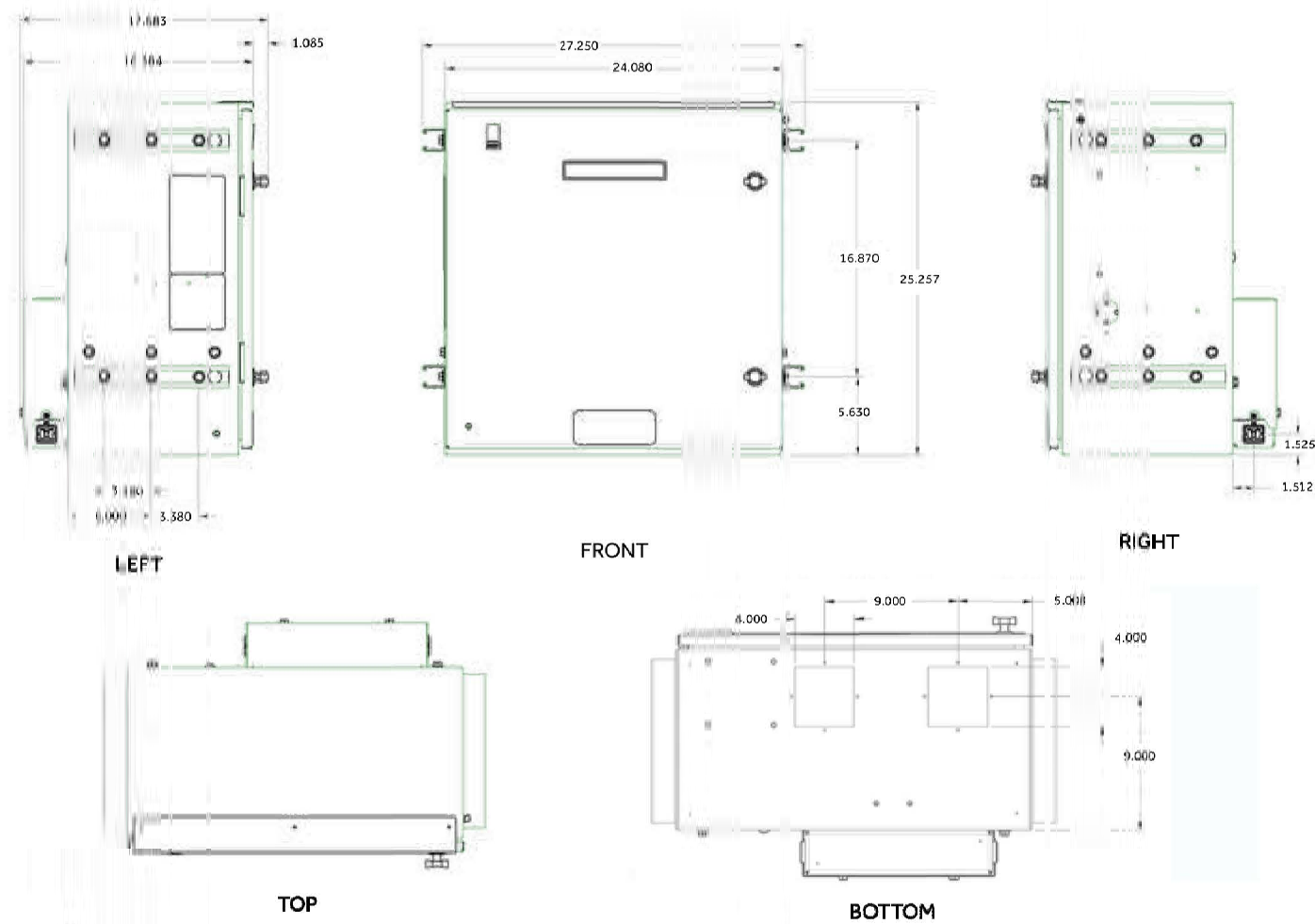
# INSL24UL

24VDC Heavy-Duty Industrial Slide Gate Operator Section 32 31 00



DATA SHEET

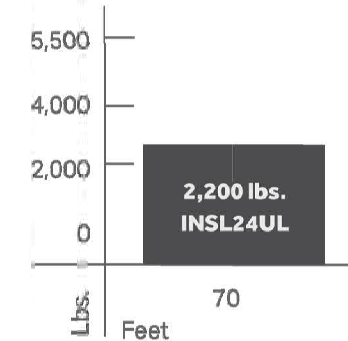
### Dimensions



### Capacity

Battery	Cycles	Standby Time
7Ah	55	105 Days
33Ah	170	180 Days

### Recommended Capacity



Features	Residential Gate Operators					Elite Series DC Commercial Gate Operators		Heavy-Duty Commercial Gate Operators	
	LAG0PKUL	L4SDPKUL	L4SDMPKUL	RS4LDEL	RS4WDEL	CS4FDEL	CS4WDEL	HRS4FDEL	HRS4WDEL
<b>Description</b>	24VDC Linear Actuator	12VDC Solar Linear Actuator	24VDC Reversible Light Commercial Slide Gate Operator	12VDC Reversible Light Commercial Slide Gate Operator	12VDC Reversible Light Commercial Slide Gate Operator	24VDC High Traffic Commercial Slide Gate Operator	24VDC High Traffic Commercial Slide Gate Operator	24VDC Heavy Duty Commercial Slide Gate Operator	24VDC Heavy Duty Commercial Slide Gate Operator
<b>Max. Gate Weight</b>	850 lbs.	850 lbs.	1600 lbs.	800 lbs.	1000 lbs.	1500 lbs.	1600 lbs.	3000 lbs.	2400 lbs. (1200 lbs. supported on 48" track)
<b>Max. Gate Length</b>	16 ft.	16 ft.	15 ft.	25 ft.	34 ft.	50 ft.	10 ft.	75 ft. (120 ft. supported on 48" track)	12 ft. (120 ft. supported on 48" track)
<b>Gate Speed</b>	97" in 10-17 sec.	97" in 23-25 sec.	97" in 10-17 sec.	107" in 10-17 sec.	97" in 12-15 sec.	127" in 12-15 sec.	97" in 12-15 sec.	61" in 12-15 sec.	97" in 12-15 sec.
<b>Recommended Cycles</b>	100 cycles	100 cycles	300 cycles	120 cycles	250 cycles	Continuous Duty	Continuous Duty	Continuous Duty	Continuous Duty
<b>Battery Backup</b>	400 cycles	Not Applicable - Solar	500 cycles	114 cycles	147 cycles	200 cycles	148 cycles	45 cycles	45 cycles
<b>Security+ 2.0*</b>	Yes	Yes	Yes	Yes	Yes	Yes	Yes	Yes	Yes
<b>myQ Enabled</b>	Yes	Yes	Yes	Yes	Yes	Yes	Yes	Yes	Yes
<b>Monitored Safety Inputs (2 per Code)</b>	3 inputs	3 inputs	6 inputs (Main and Expansion Board)	3 inputs	3 inputs	6 inputs (Main and Expansion Board)	6 inputs (Main and Expansion Board)	6 inputs (Main and Expansion Board)	6 inputs (Main and Expansion Board)
<b>Standby Power</b>	Up to 57 days	Up to 126 days	Up to 21 days	Up to 63 days	Up to 63 days	Up to 21 days	Up to 24 days	Up to 120 days	Up to 120 days
<b>Solar Performance - Cycles per Day</b>	Approx. 81 cycles*	Approx. 100 cycles*	Approx. 43 cycles*	Approx. 33 cycles*	Approx. 41 cycles*	Approx. 20 cycles*	Approx. 16 cycles*	Approx. 12 cycles*	Approx. 14 cycles*
<b>DC Motor with Smooth Start/Stop</b>	Yes	Yes	Yes	Yes	Yes	Yes	Yes	Yes (Standard Fit)	Yes (Standard Fit)
<b>Diagnostic Code Display - 2 Digit LED</b>	Yes	Yes	Yes	Yes	Yes	Yes	Yes	Yes	Yes
<b>Wireless Dual-Gate Operation</b>	Yes	Yes	Yes	Yes	Yes	Yes	Yes	Yes	Yes
<b>Warranty Period</b>	2 Years	2 Years	2 Years	3 Years	3 Years	7 Years Residential / 5 Years Commercial	7 Years Residential / 5 Years Commercial	7 Years Residential / 5 Years Commercial	7 Years Residential / 5 Years Commercial
<b>Standard Power</b>	115V Single Phase	Solar Power	115/208V Single Phase	115V Single Phase	115V Single Phase	115/208V Single Phase	115/208V Single Phase	115/208V Single Phase	115/208V Single Phase

\*Cycles noted are for Zone 1 with a 10W solar panel (8 hours sunlight per day).  
 \*\*Cycles noted are for Zone 1 with a 20W solar panel (8 hours sunlight per day).  
 Note: LMRRLUL/MTBU. Heater option not recommended for solar applications. Heater option diminishes Standby time and cycles for Battery Backup.

### UL 325 Listed Gate Operator Feature Chart

For specifications and information on all our products, visit [LiftMaster.com/TOTALPAS](http://LiftMaster.com/TOTALPAS)

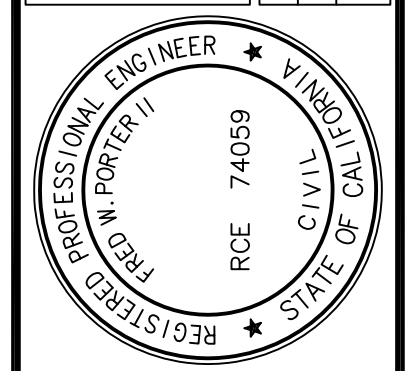
© 2023 The Chamberlain Group LLC. All Rights Reserved. myQ, the myQ logo, LiftMaster, the LiftMaster logo, are registered trademarks of The Chamberlain Group LLC. LMR707009W021 11/23



THE ABOVE DRAWINGS AND SPECIFICATIONS AND ARRANGEMENTS ARE THE PROPERTY OF PORTER & ASSOCIATES, INC. ANY PART THEREOF SHALL BE COPIED OR REPRODUCED OR USED IN CONNECTION WITH ANY WORK OR PROJECT OTHER THAN THE SPECIFIC PROJECT FOR WHICH THEY HAVE BEEN PREPARED AND DEVELOPED WITHOUT THE WRITTEN CONSENT OF THE ENGINEER. VISUAL EVIDENCE OF ACCEPTANCE OF THESE RESTRICTIONS, WRITTEN DIMENSIONS ON THESE DRAWINGS SHALL HAVE PRECEDENCE OVER SCALED DIMENSIONS. CONTRACTORS SHALL BE RESPONSIBLE FOR VERIFYING ALL DIMENSIONS FROM THE DIMENSIONS AND CONDITIONS SHOWN BY THESE DRAWINGS. SHOP DETAILS MUST BE SUBMITTED TO THIS OFFICE FOR APPROVAL BEFORE PROCEEDING WITH FABRICATION.

**PORTER & ASSOCIATES, INC.**  
 ENGINEERING & SURVEYING  
 1707 Elye Street, Suite 111, Bakersfield, California 93301  
 661.327.0362

FRED W. PORTER II  
 PROJECT ENGINEER: MVC  
 DRAFTSMAN: LOH  
 PA REVIEW BY: \_\_\_\_\_  
 DATE: \_\_\_\_\_



**RETAINING WALL PLANS**  
**222 34th STREET**  
**BAKERSFIELD CITY SCHOOL DISTRICT**  
**GATE OPENER DETAILS**

DATE: 1/17/2024  
 PA JOB No. 3306

SHEET  
**11**  
 OF 11 SHEETS