

INSL24UL

24VDC Industrial Slide Gate Operator Section 32.31.00



DATA SHEET

Key Features

- Steel Cabinet
 - Battery Backup
 - Remote Control Access
 - Internet Connectivity
 - Monitored Safety Devices
 - Solar-Power Capabilities
 - Diagnostic Display
 - Wireless Dual-Gate Communication
 - Fail-Safe Control
 - Fire Department Compliant
 - Limit Setting
 - Diagnostic Display
 - Programmable Auxiliary Relays
 - Unauthorized Access Prevention
 - Homelink® Capability
- Waterproof 14 gauge, NEMA 3R steel cabinet
- Security 2DR 3-channel receiver will handle up to 50 remote controls
- Interfaced modules with 311, MAX813, ILMX, mQ® Facility cloud connection and mQ® capability for secure monitoring and control of gate operator from anywhere*
- 6 inputs (main and expansion board)
- Yes
- LED diagnostic display
- Eliminate expensive conduit costs and unsightly driveway scars
- Bi-part delay or synchronized close
- Allows gate to auto open upon loss of AC power or battery depletion
- Includes manual release
- Electronic
- 2 programmable emergency relays accommodate more accessories such as fire alarm, burglar alarm with anti-lag/lets or quick close capabilities
- Version 4 or higher

Specifications

- Operator Speed Power 0.5 Ft/sec. to 1 Ft/sec
- 120V/240VAC single phase, optional 3 phase kit for 208/230/460VAC and 575VAC
- Accessory Power 24VDC 1 A max. output switched and unswitched power
- Operator Weight 128 lbs.
- Warranty 5 years
- Temperature Specification Without heater: -4°F (-20°C) to 140°F (60°C); with optional heater: -40°F (-40°C) to 140°F (60°C)
- UL Usage Classification IIL, III, IV

Construction

- Motor 24VDC brushless motor with soft start/stop
 - Construction-ality Continuous-duty
 - Operator Duty Rating Constructed with 1/4 in. powder coated steel for rust prevention
 - Chassis/Framing Direct drive 40:1 gear ratio
 - Clear Reduction Powder-coated, 14 gauge steel cabinet, oil-tight, waterproof
 - Construction/finish NEMA 3R lockable cabinet
- #40
- Rated for gates up to 70 ft. in length and weighing up to 2200 lbs.
- *When used with mQ® Facility capable access control. Cellular data or Wi-Fi connection required



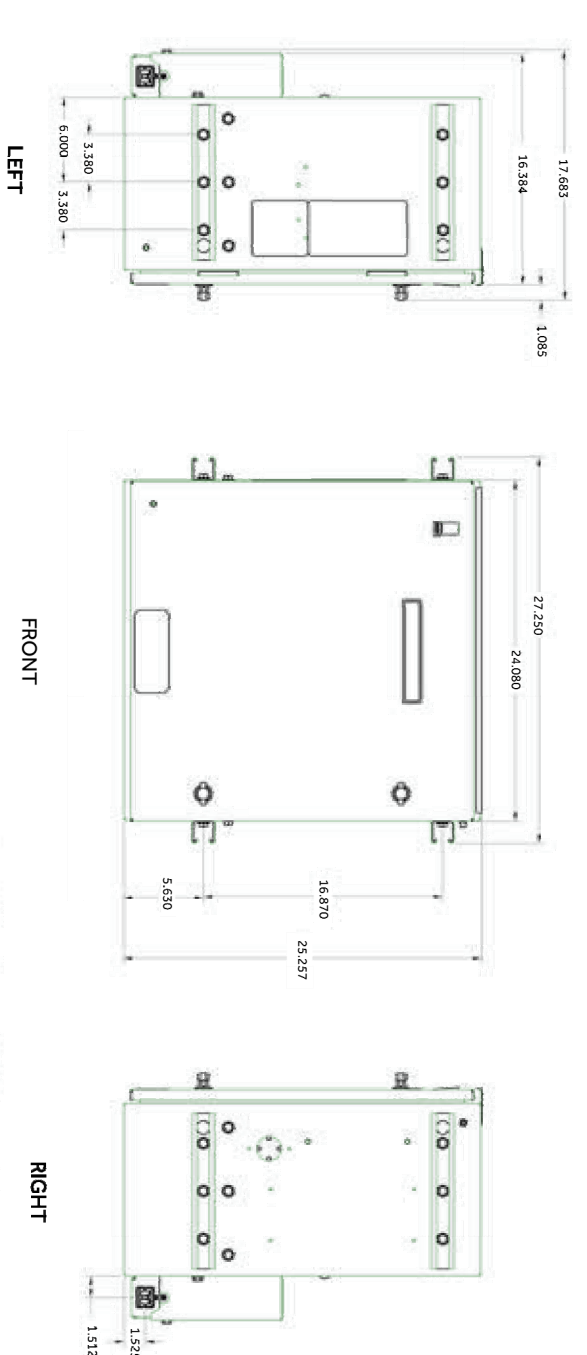
INSL24UL

24VDC Heavy-Duty Industrial Slide Gate Operator Section 32.31.00



DATA SHEET

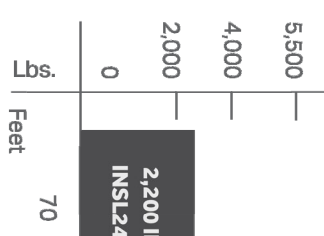
Dimensions



Capacity

Battery	Cycles	Standby Time
7Ah	55	105 Days
33Ah	170	180 Days

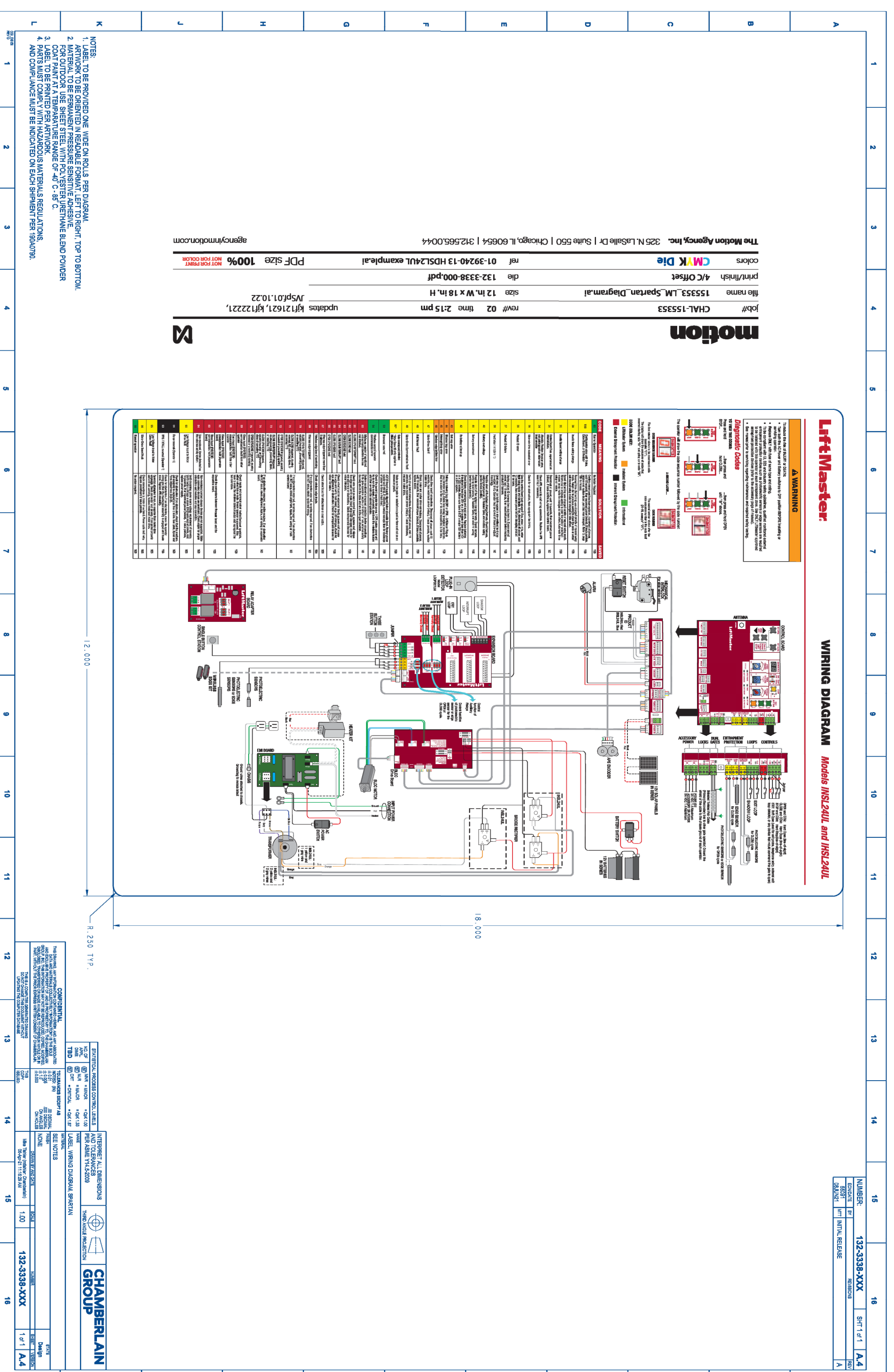
Recommended Capacity



© 2022 The Chamberlain Group, LLC. All Rights Reserved. mQ® and mQ® logo, LiftMaster, LiftMaster logo, are registered trademarks of The Chamberlain Group, LLC. LiftMaster, LiftMaster logo, are registered trademarks of The Chamberlain Group, LLC. LiftMaster, LiftMaster logo, are registered trademarks of The Chamberlain Group, LLC.



GATE OPENER SPECIFICATIONS



Model Number	Label	Label	Label	Label	Label	Label	Label	Label	Label
24VDC Heavy-Duty Industrial Slide Gate Operator	120VDC Heavy-Duty Industrial Slide Gate Operator	120VDC Heavy-Duty Industrial Slide Gate Operator	120VDC Heavy-Duty Industrial Slide Gate Operator	120VDC Heavy-Duty Industrial Slide Gate Operator	120VDC Heavy-Duty Industrial Slide Gate Operator	120VDC Heavy-Duty Industrial Slide Gate Operator	120VDC Heavy-Duty Industrial Slide Gate Operator	120VDC Heavy-Duty Industrial Slide Gate Operator	120VDC Heavy-Duty Industrial Slide Gate Operator
Max. Gate Weight	600 lbs.	600 lbs.	600 lbs.	600 lbs.	600 lbs.	600 lbs.	600 lbs.	600 lbs.	600 lbs.
Max. Gate Length	16 ft.	16 ft.	16 ft.	16 ft.	16 ft.	16 ft.	16 ft.	16 ft.	16 ft.
Gate Speed	0.5 ft/sec.	0.5 ft/sec.	0.5 ft/sec.	0.5 ft/sec.	0.5 ft/sec.	0.5 ft/sec.	0.5 ft/sec.	0.5 ft/sec.	0.5 ft/sec.
Max. Gate Height	15'-11 1/2"	15'-11 1/2"	15'-11 1/2"	15'-11 1/2"	15'-11 1/2"	15'-11 1/2"	15'-11 1/2"	15'-11 1/2"	15'-11 1/2"
Max. Gate Width	16'-0"	16'-0"	16'-0"	16'-0"	16'-0"	16'-0"	16'-0"	16'-0"	16'-0"
Max. Gate Area	256 sq. ft.	256 sq. ft.	256 sq. ft.	256 sq. ft.	256 sq. ft.	256 sq. ft.	256 sq. ft.	256 sq. ft.	256 sq. ft.
Max. Gate Volume	4096 cu. ft.	4096 cu. ft.	4096 cu. ft.	4096 cu. ft.	4096 cu. ft.	4096 cu. ft.	4096 cu. ft.	4096 cu. ft.	4096 cu. ft.
Max. Gate Weight (incl. wind)	600 lbs.	600 lbs.	600 lbs.	600 lbs.	600 lbs.	600 lbs.	600 lbs.	600 lbs.	600 lbs.
Max. Gate Length (incl. wind)	16 ft.	16 ft.	16 ft.	16 ft.	16 ft.	16 ft.	16 ft.	16 ft.	16 ft.
Max. Gate Height (incl. wind)	15'-11 1/2"	15'-11 1/2"	15'-11 1/2"	15'-11 1/2"	15'-11 1/2"	15'-11 1/2"	15'-11 1/2"	15'-11 1/2"	15'-11 1/2"
Max. Gate Width (incl. wind)	16'-0"	16'-0"	16'-0"	16'-0"	16'-0"	16'-0"	16'-0"	16'-0"	16'-0"
Max. Gate Area (incl. wind)	256 sq. ft.	256 sq. ft.	256 sq. ft.	256 sq. ft.	256 sq. ft.	256 sq. ft.	256 sq. ft.	256 sq. ft.	256 sq. ft.
Max. Gate Volume (incl. wind)	4096 cu. ft.	4096 cu. ft.	4096 cu. ft.	4096 cu. ft.	4096 cu. ft.	4096 cu. ft.	4096 cu. ft.	4096 cu. ft.	4096 cu. ft.
Max. Gate Weight (incl. wind, incl. accessories)	600 lbs.	600 lbs.	600 lbs.	600 lbs.	600 lbs.	600 lbs.	600 lbs.	600 lbs.	600 lbs.
Max. Gate Length (incl. wind, incl. accessories)	16 ft.	16 ft.	16 ft.	16 ft.	16 ft.	16 ft.	16 ft.	16 ft.	16 ft.
Max. Gate Height (incl. wind, incl. accessories)	15'-11 1/2"	15'-11 1/2"	15'-11 1/2"	15'-11 1/2"	15'-11 1/2"	15'-11 1/2"	15'-11 1/2"	15'-11 1/2"	15'-11 1/2"
Max. Gate Width (incl. wind, incl. accessories)	16'-0"	16'-0"	16'-0"	16'-0"	16'-0"	16'-0"	16'-0"	16'-0"	16'-0"
Max. Gate Area (incl. wind, incl. accessories)	256 sq. ft.	256 sq. ft.	256 sq. ft.	256 sq. ft.	256 sq. ft.	256 sq. ft.	256 sq. ft.	256 sq. ft.	256 sq. ft.
Max. Gate Volume (incl. wind, incl. accessories)	4096 cu. ft.	4096 cu. ft.	4096 cu. ft.	4096 cu. ft.	4096 cu. ft.	4096 cu. ft.	4096 cu. ft.	4096 cu. ft.	4096 cu. ft.

UL 325 Listed Gate Operator Feature Chart

For specifications and information on all our products, visit LiftMaster.com/UL325



APPROVAL STAMP: BAKERSFIELD CITY SCHOOL DISTRICT

EDUCATION CENTER, BAKERSFIELD, CA 93305, PH: 805.831.4400, FAX: 805.831.1935

DEPARTMENT: MAINTENANCE, OPERATIONS, & FACILITIES

801 N. ZANE DRIVE, BAKERSFIELD, CA 93307, PHONE: (805) 868-6600, FAX: (805) 868-9466

PROJECT: GATE AND FENCING REPLACEMENT

DRAWINGS FOR: SPECIAL ED/ HEALTH SERV., 222 34th STREET, BAKERSFIELD, CA 93301

CONSULTANT: PORTER & ASSOC., 1707 EYE STREET, SUITE 111, BAKERSFIELD, CA 93301

REV. NO.: 1

TITLE: OPERATOR SPECS.

PROJECT NO.: 00000.00-41-DM

SHEET NO.: A-400

RELEASE DATE: 4/16/24