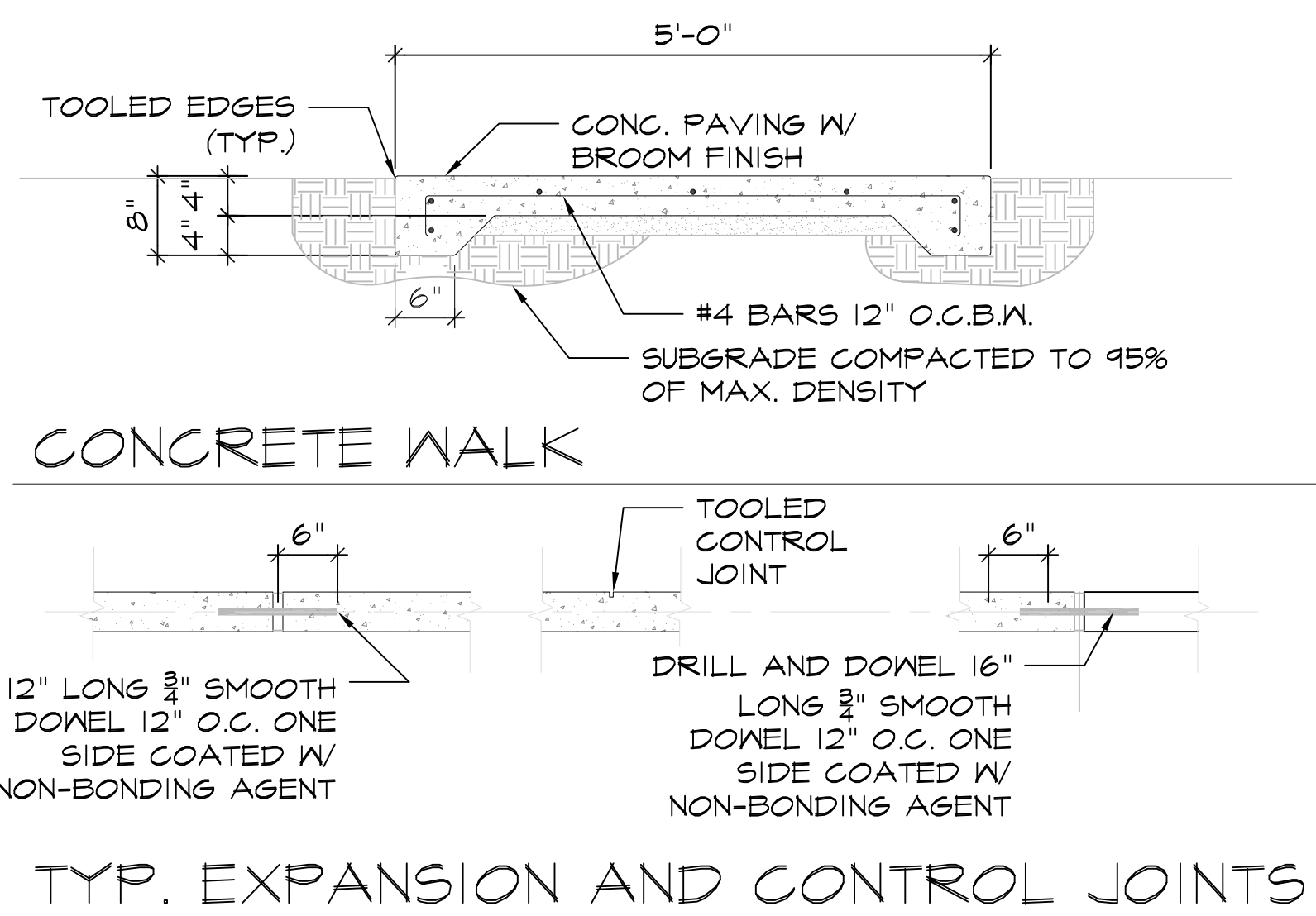


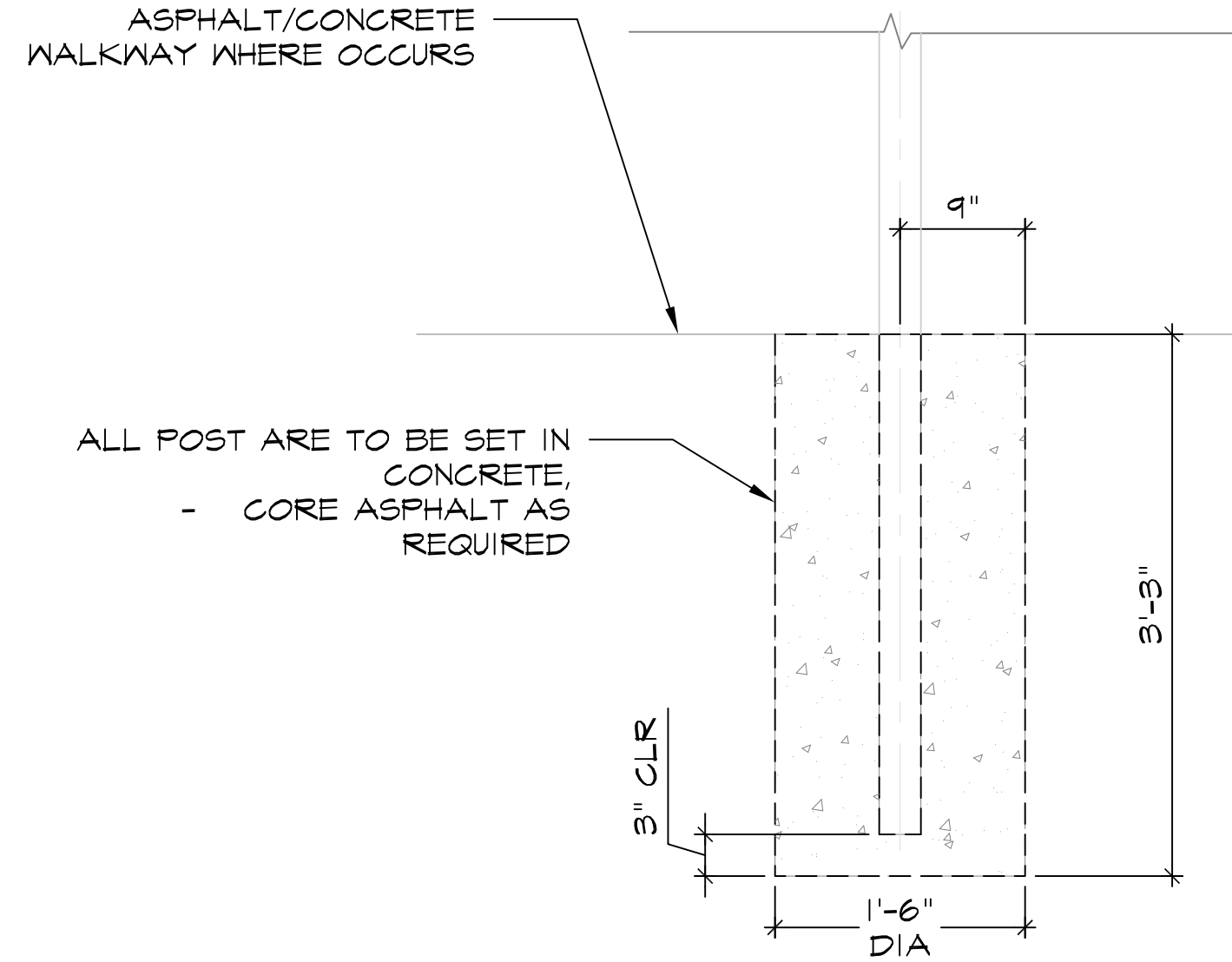
**1 FENCE PANEL W/ FLOATING PANEL X8' HIGH** SCALE: 3/8"=1'-0" (IN FT)

**2 SINGLE WALK GATE** SCALE: 3/8"=1'-0" (IN FT)

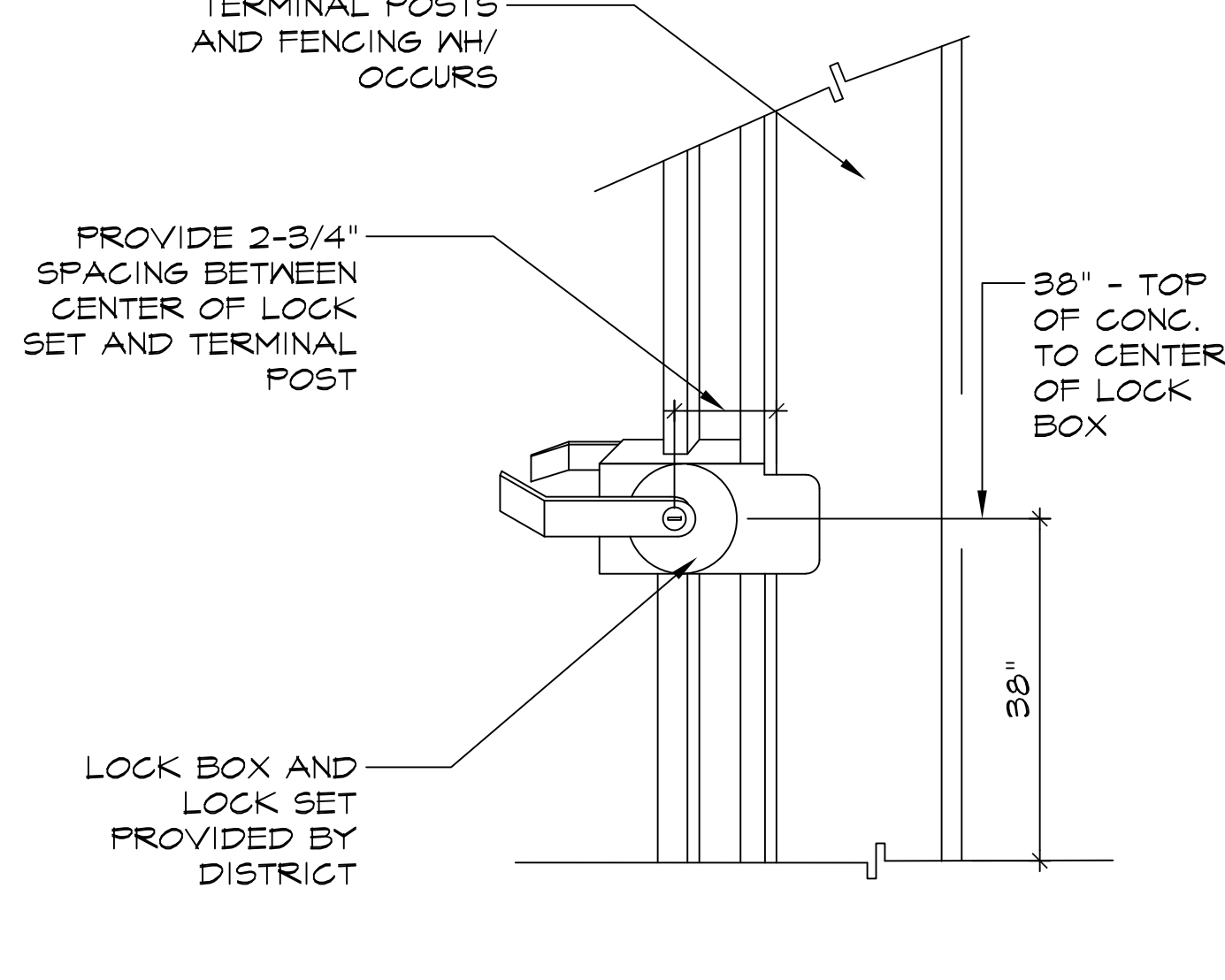


- NOTES:
- REFER TO SITE PLAN FOR FINISH GRADE OD CONC. WALKS.
  - AFTER FORM REMOVAL, BACKFILL TOPSOIL AGAINST WALK TO WALK TOP.
  - LOCATE EXPANSION JOINTS AT 8' INTERVALS OR AS INDICATED BY SITE PLAN.
  - PROVIDE TOOLED JOINTS AS SHOWN ON DRAWINGS. JOINTS TO BE 1/2" DEEP X 3/8" WIDE. SPACE JOINS AS SHOWN ON SITE PLAN.
  - PROVIDE CHAIRS TO HOLD REINFORCING IN POSITION DURING CONCRETE POUR.

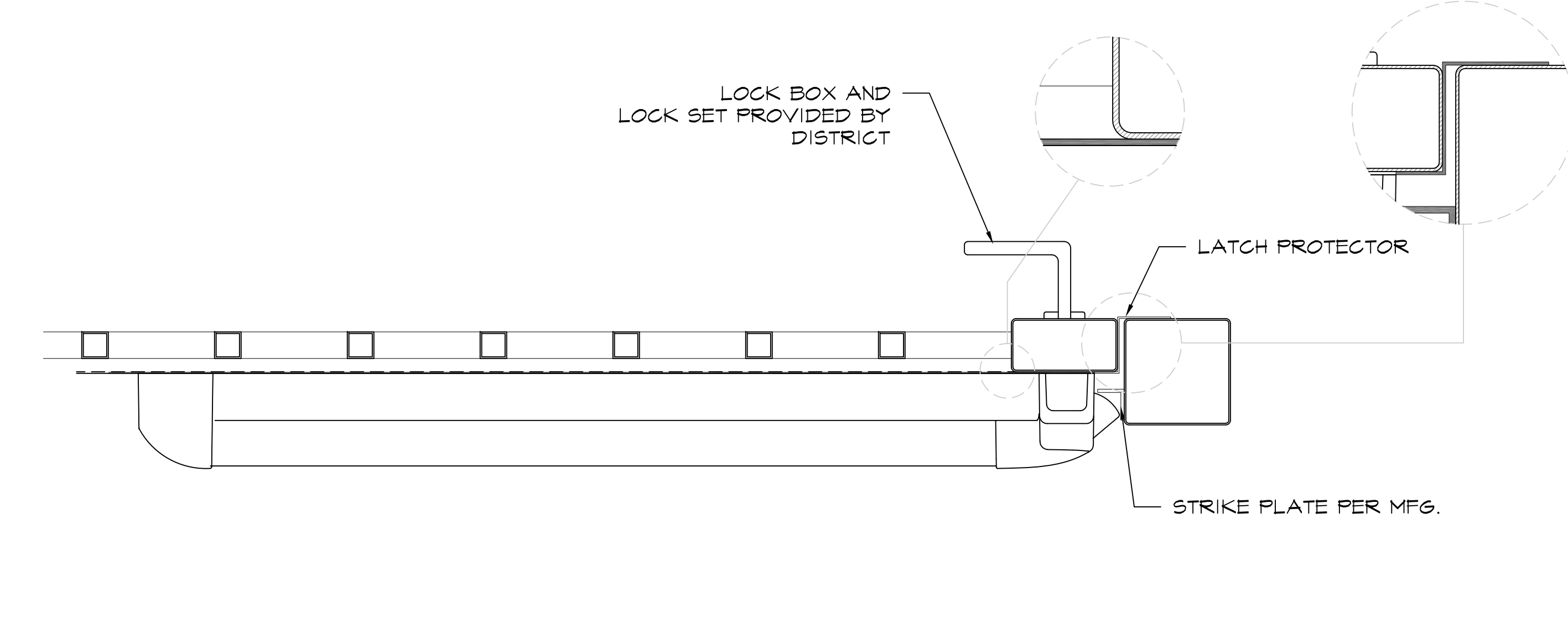
**3 CONCRETE WALK DETAILS** SCALE: 3/4"=1'-0" (IN FEET)



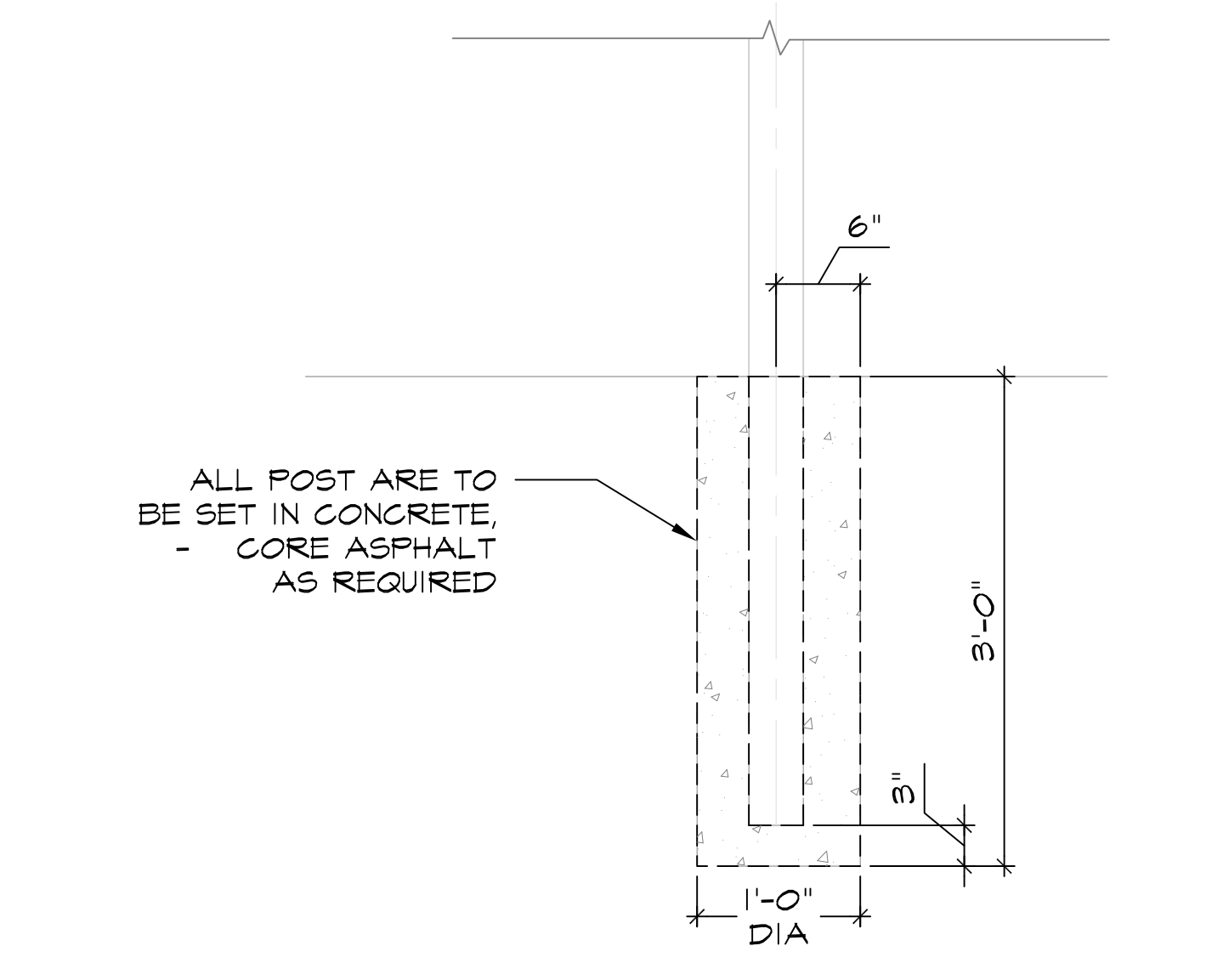
**4 FENCE FOOTING** SCALE: 1"=1'-0" (IN FEET)



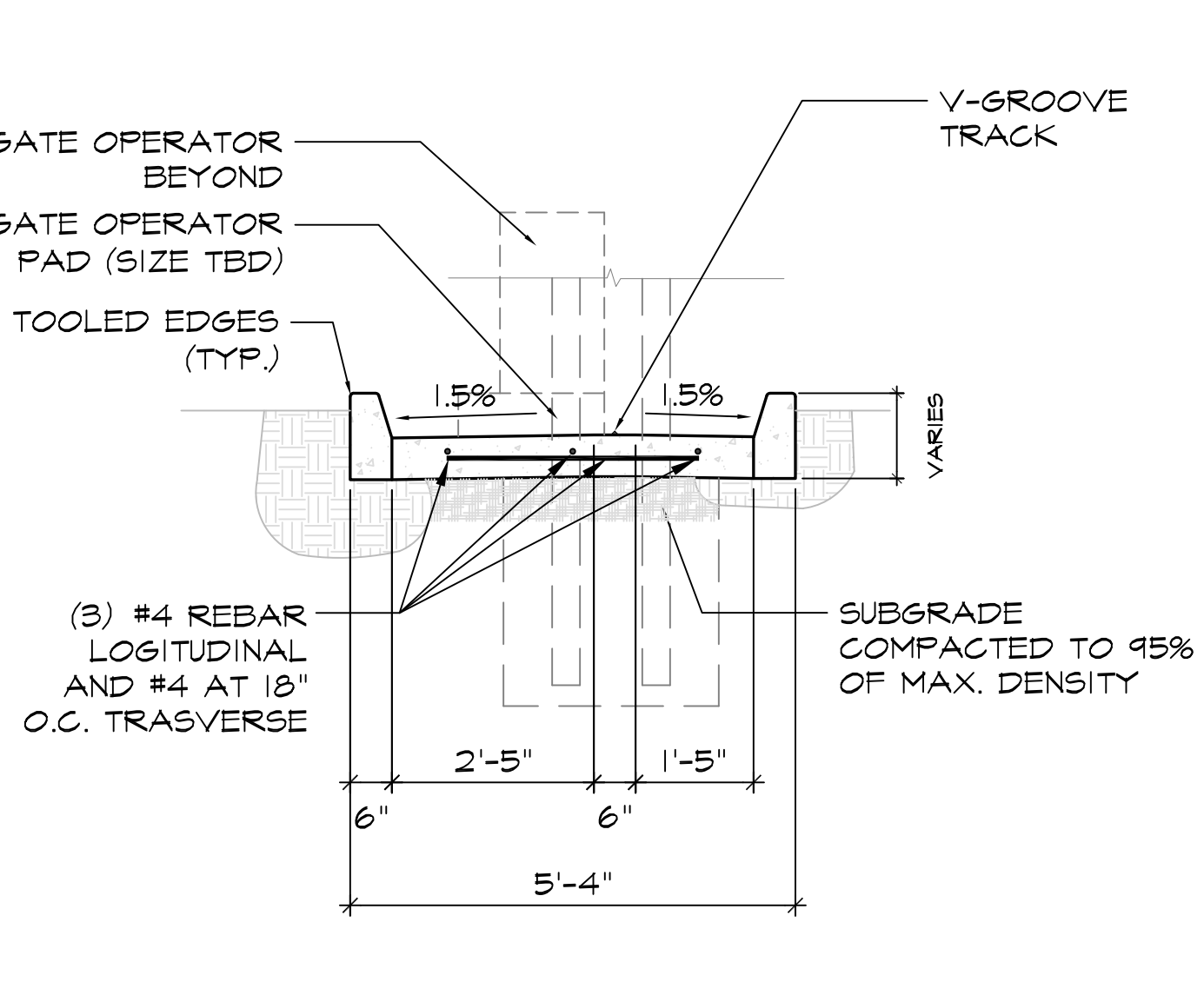
**5 LOCK DETAIL** SCALE: 1/2"=1'-0" (IN FEET)



**6 GATE HARDWARE** SCALE: 3"=1'-0" (IN INCHES)



**7 GATE FOOTING** SCALE: 1"=1'-0" (IN FEET)



**8 RETAINING DETAIL** SCALE: 1/2"=1'-0" (IN FEET)

APPROVAL STAMP



**BAKERSFIELD CITY SCHOOL DISTRICT**

EDUCATION CENTER  
1300 BAKER STREET  
BAKERSFIELD, CA 93305  
PH: 661.631.4600  
FAX: 661.326.1465

DEPARTMENT:  
**MAINTENANCE, OPERATIONS & FACILITIES**  
1801 PELIZ DRIVE  
BAKERSFIELD, CA 93307  
PHONE: (661) 661-8805  
FAX: (661) 664-4956

PROJECT:  
**GATE AND FENCING REPLACEMENT**

DRAWINGS FOR:  
**SPECIAL ED/ HEALTH SERV.**  
222 34th STREET  
BAKERSFIELD, CA 93301

CONSULTANT:  
**PORTER & ASSOC.**  
1707 EYE STREET, SUITE III  
BAKERSFIELD, CA 93301

REV. NO.:	TITLE:
1	

SHEET TITLE:  
**DETAILS**

PROJECT NO.:

00000.00-41-DM

SHEET NO.:

A-301

RELEASE:  
DATE: 4/16/24