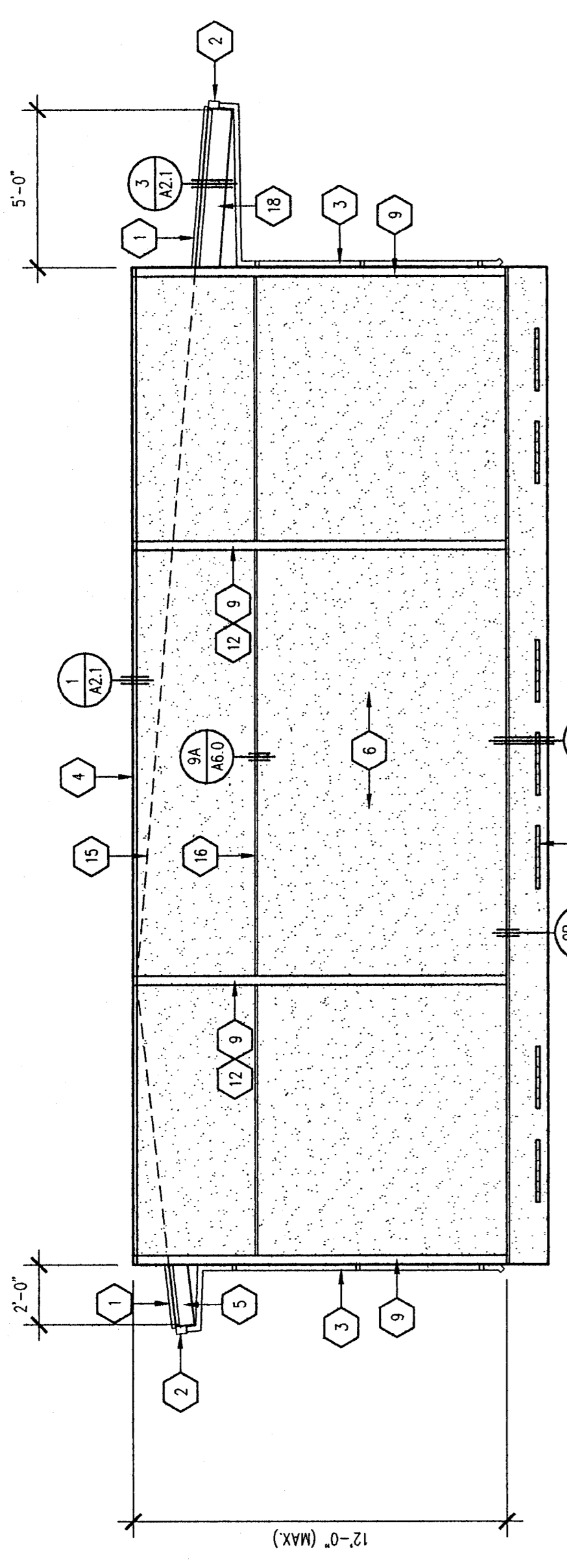


KEY NOTES

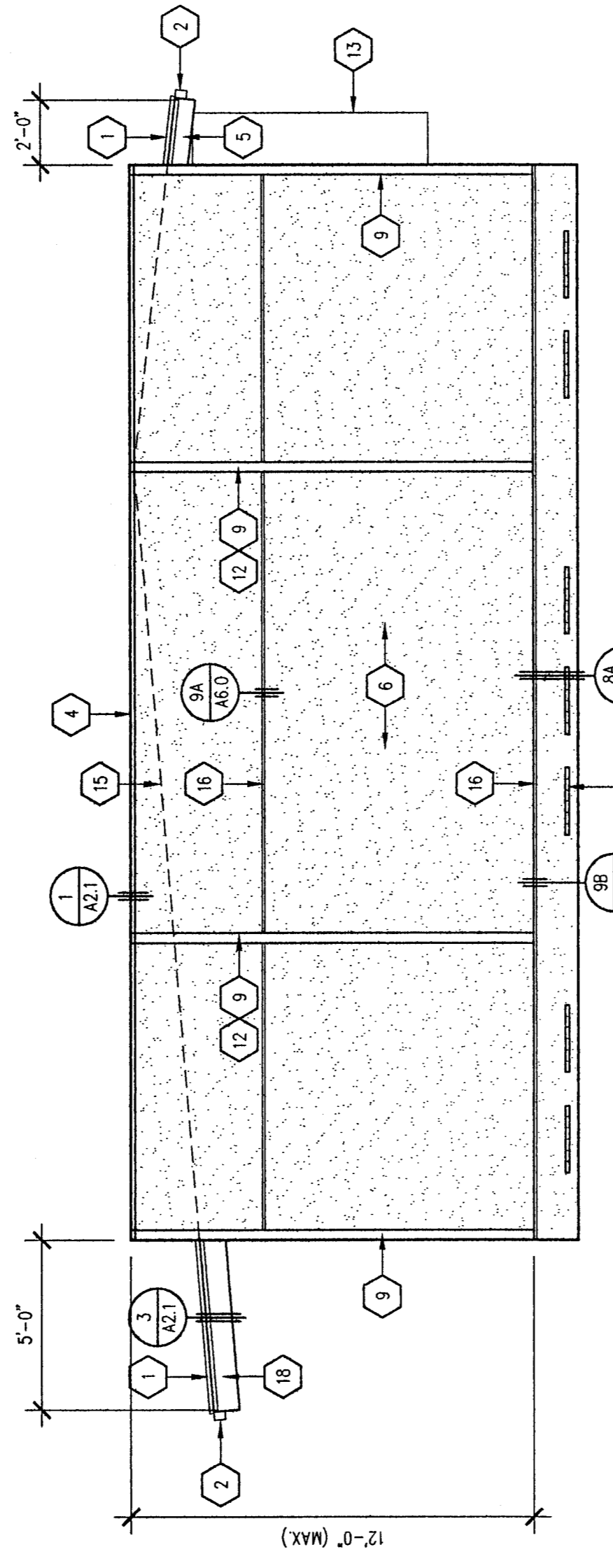
- 1 26 GA. STANDING SEAM METAL ROOFING (SEE SPECS.)
- 2 24 GA. GUTTER WITH CLOSED ENDS
- 3 26 GA. DOWNSPOUT
- 4 26 GA. PARAPET CAP
- 5 2 x 8 FASCIA BOARD
- 6 EXTERIOR SIDING WITH PAINTED FINISH (SEE SPECS.)
- 7 METAL DOOR & FRAME (SEE DOOR SCHED.)
- 8 ALUM. SLIDING WINDOW (SEE WINDOW SCHED.)
- 9 1 x 4 MILLED TRIM
- 10 WALL MOUNTED LIGHT FIXTURE (SEE ELECT.)
- 11 JUNCTION BOX FOR FIRE ALARM HORN @ +80" (SEE ELECT.)
- 12 CONTINUOUS BEAD OF WATERPROOF MASTIC @ MODULAR LINE
- 13 HIAC UNIT (SEE MECH.)
- 14 4" x 4" x 2'-0" LONG COMMUNICATION GUTTER (SEE ELECT.)
- 15 ROOF LINE BEYOND
- 16 HORIZONTAL 7" FLASHING AT PANEL JOINTS
- 17 EXPANDED METAL VENTILATING CLOSURE SCREEN
- 18 2 x 10 FASCIA BOARD
- 19 UNDERFLOOR SCREENED VENT - SEE PLAN (7/A6.0)

FILE NO.
 AUTHORIZATION STAMP
 DIV. OF THE STATE ARCHITECT
 OFFICE OF REGULATION SERVICES
 M. A. G. 10/17/94
 DATE: MAR 0 1 1999

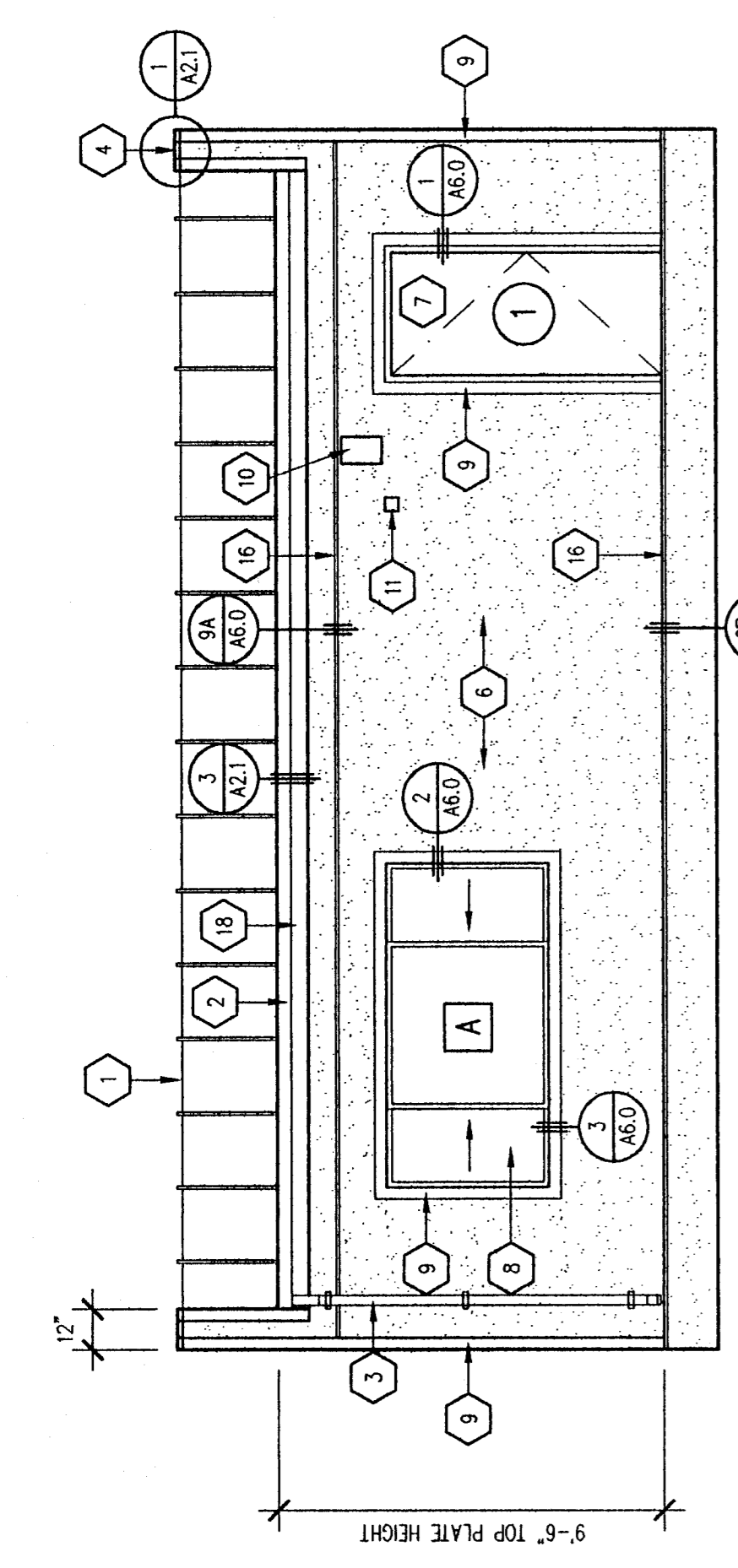
REVISIONS	DATE	DESCRIPTION



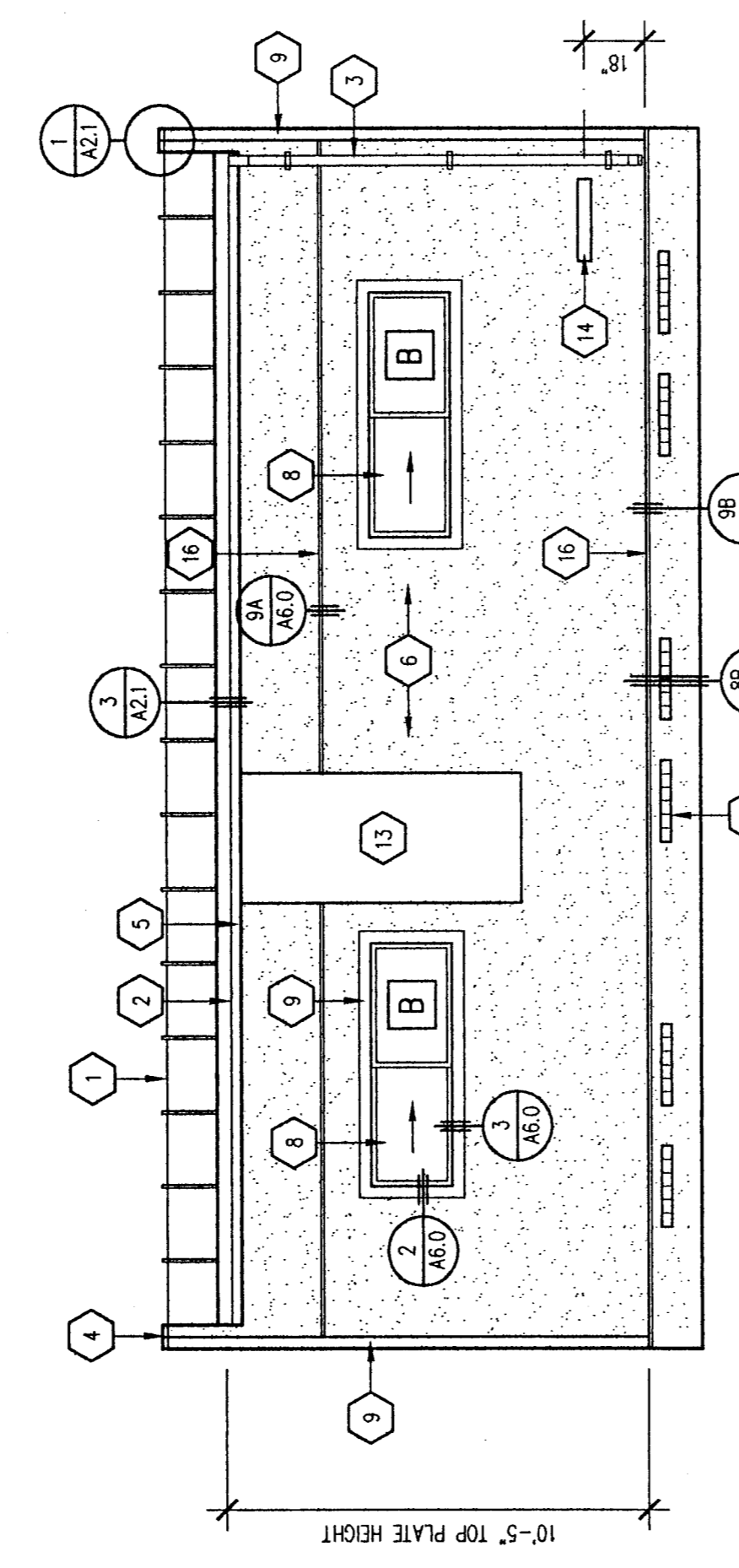
1 FRONT



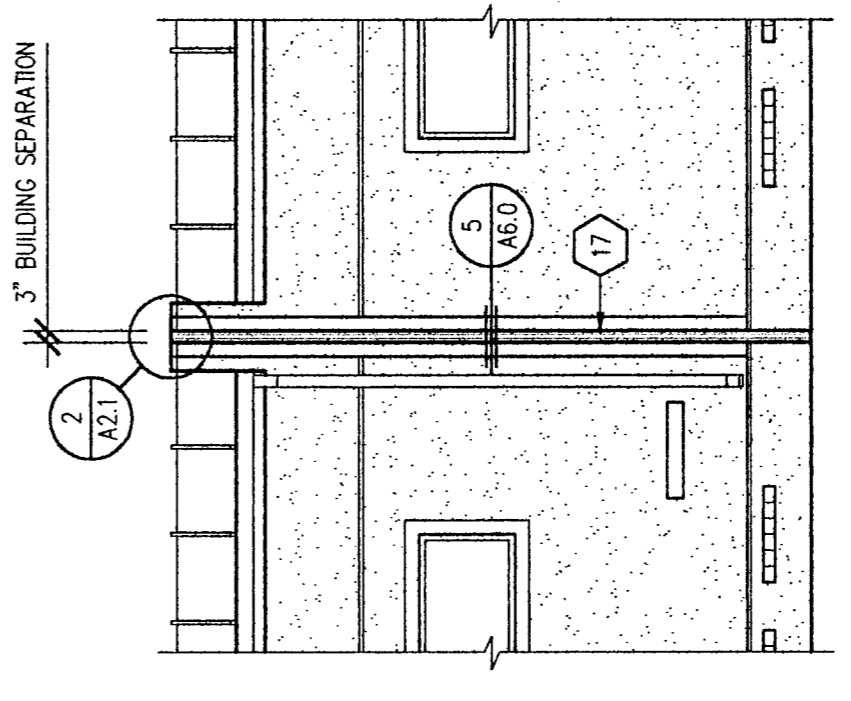
3 REAR



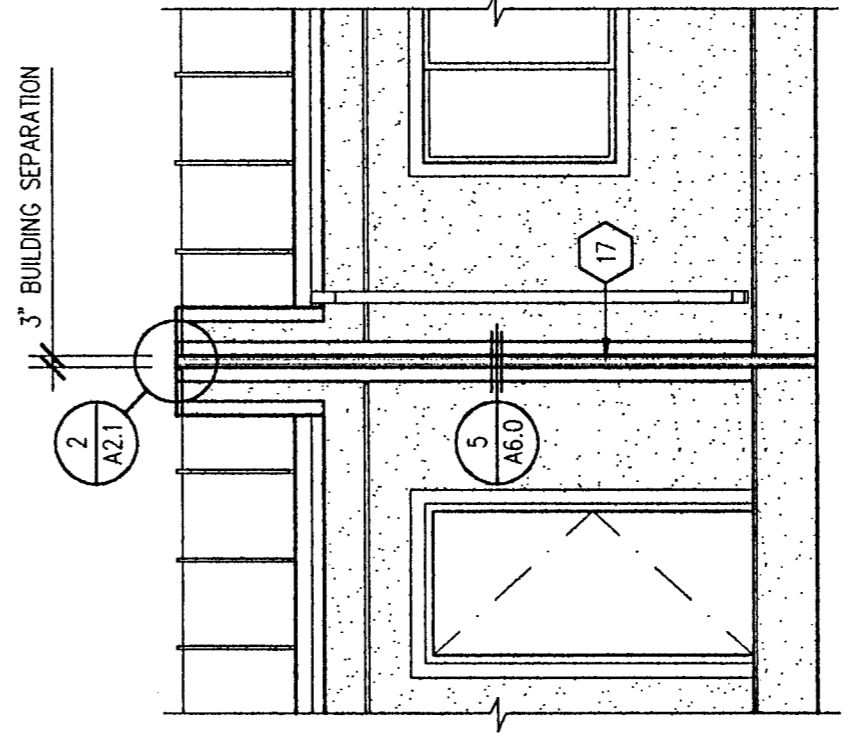
2 SIDE



4 SIDE



6 REAR @ ADJACENT BUILDINGS



5 FRONT @ ADJACENT BUILDINGS

EXTERIOR ELEVATIONS

SCALE : 1/4" = 1'-0"

D.S.A.