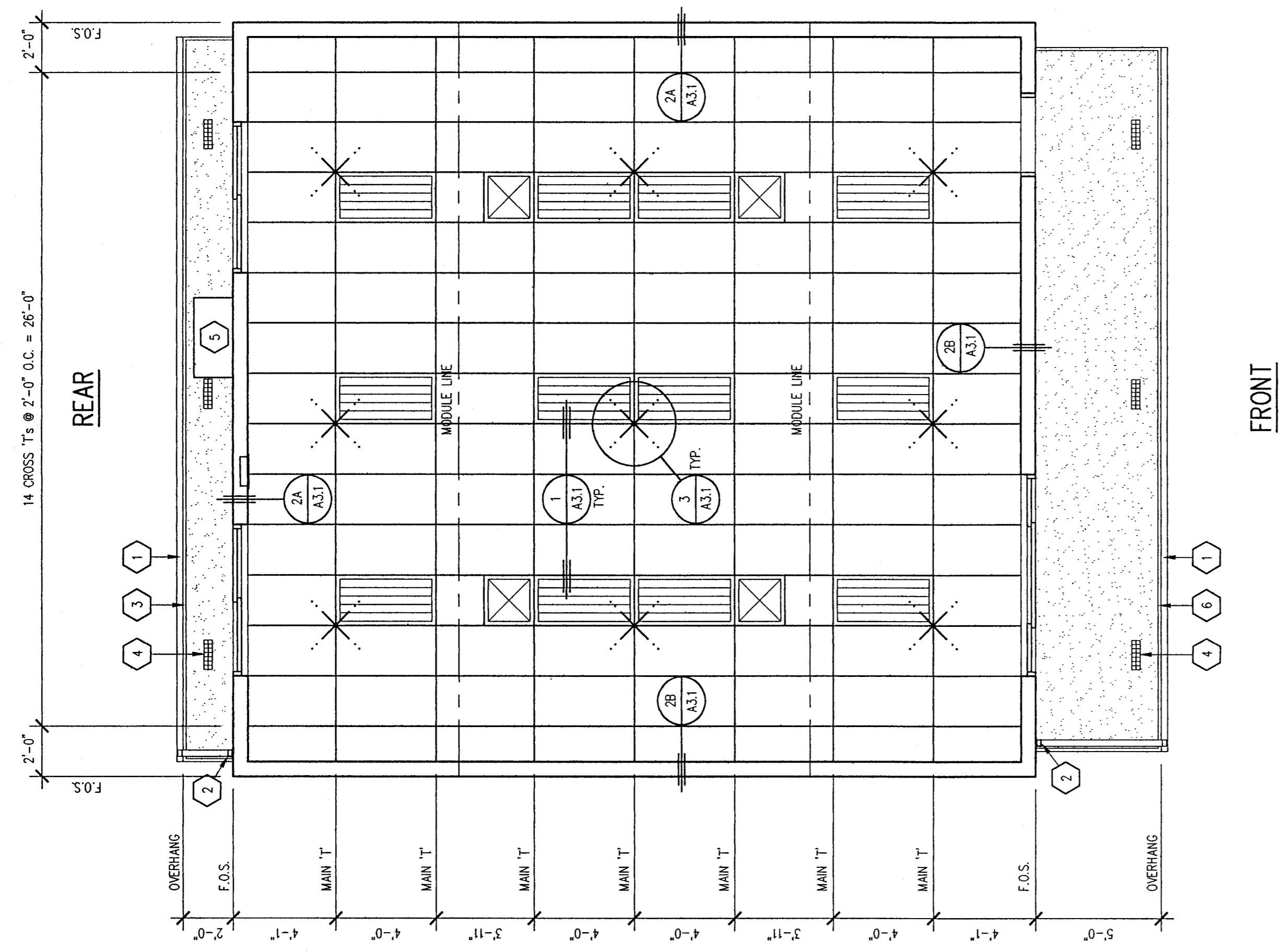


KEY NOTES

- 1 24 GA. OUTER WITH CLOSED ENDS
- 2 26 GA. DOWNSPOUT
- 3 2 X 8 FASCIA BOARD
- 4 4" WIDE x 14" LONG SCREENED VENT FOR EAVE (TYP. FOR 6)
- 5 HVAC UNIT (SEE MECH.)
- 6 2 X 10 FASCIA BOARD

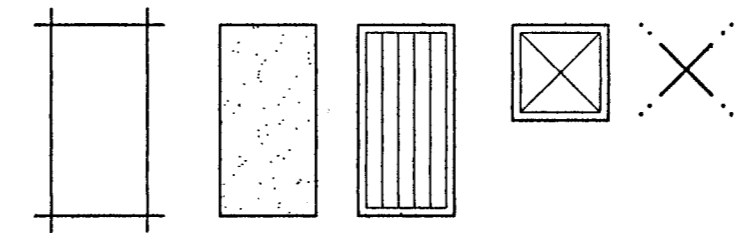


REFLECTED CEILING PLAN

SCALE : 1/4" = 1'-0"

LEGEND

- SUSPENDED T1 BAR CEILING SYSTEM WITH A MIN. CLASSIFICATION OF TYPE I. ALL SUSPENSION HANGERS SHALL BE 1/2" DIA. GALV. STEEL. ALL CROSS BRACES SHALL BE 2" x 4" LAY-IN PANELS PER ASTM C579. CEILING TILES SHALL BE 2" x 4" LAY-IN PANELS PER ASTM C579. FLAME SPREAD CLASS 1 (0-25), FLAME SPREAD SMOKE DEVELOPMENT DENSITY LESS THAN 450 (TYP.)
- 1/2" PLWOOD EAVE WITH PAINTED FINISH (SEE SPECS.)
- 2" x 4" FLUORESCENT LIGHT FIXTURE (SEE ELECT.) WITH 2 - 12 GA. SLACK WIRES TO HOUSING OF ALL FIXTURES AT DIAGONAL CORNERS. LIGHT FIXTURE STRUCTURE SHALL BE ATTACHED TO CEILING GRID WITH 1 - #8 SHEET METAL SCREW AT EACH CORNER.
- SUPPLY AIR DIFFUSER (SEE MECH.) POSITIVELY ATTACH DIFFUSER TO CEILING GRID WITH 4 - 10 GA. SHEET METAL SCREWS.
- SPRAY BRACE LOCATION WITH COMPRESSION STRUT. WIRES TAUT BUT NOT TO DISTORT CEILING GRID (TYP.)



REFLECTED CEILING PLAN

MODULAR BUILDING
MODEL #960 S

JOB NO. 288
SHEET NO. A3.0

DATE 12-8-98
DRAWN J.A.

CONSTRUCTION
JTS
701 McArthur Drive, Redwood City, CA 94061
P.O. Box 8195, Redwood City, CA 94064-1765
Tel: 805-885-8494 Fax: 805-885-9270

ARCHITECT
Glenn Hartzell - Architect, Inc.
LICENSED ARCHITECT
GLENN E. HARTZELL
No. C-10298
OCT. 31, 1998
STATE OF CALIFORNIA

FILE NO. A03-101774
REGISTRATION STAMP
DIV. OF THE STATE ARCHITECT
OFFICE OF REGULATION SERVICES
AC 10/15/98
DATE MAR 0 9 1999

REVISIONS
D.S.A.