

Glenn Hartzell - Architect, Inc.

ARCHITECT

JTS
CONSTRUCTION

7001 Medina Drive, Bakersfield, CA 93318
P.O. Box 41765, Bakersfield, CA 93384-1765
Office 805-855-9270
Fax 805-835-8424

FLOOR PLAN

MODULAR BUILDING
MODEL #960 S

JOB NO. 288
SHEET NO. A1.0
DATE 12-8-96
DRAWN J.A.

- KEY NOTES**
- 1 ROOF OVERHANG ABOVE (SHOWN DASHED)
 - 2 HVAC UNIT (SEE MECHANICAL DRAWING)
 - 3 12'-0" LONG x 4'-0" HIGH MARKER BOARD (SEE SPECS.)
 - 4 FINISH FLOORING (SEE FINISH SCHEDULE)
 - 5 TYPICAL INTERIOR FINISH (SEE FINISH SCHEDULE)
 - 6 FIRE EXTINGUISHER - 5 LBS. DRY CHEMICAL WITH 2A-10BC UL RATING ON WALL MOUNTED BRACKET (HANDLE AT 48" A.F.F.)
 - 7 ELECTRICAL PANEL (SEE ELECTRICAL DRAWINGS)
 - 8 JUNCTION BOX FOR FIRE ALARM PULL STATION @ +48" W/ CONDUIT STUBBED TO ATTIC (SEE ELECT.)
 - 9 HVAC THERMOSTAT (SEE MECHANICAL DRAWINGS)
 - 10 26 GA. DOWNSPOUT
 - 11 JUNCTION BOX FOR FIRE ALARM VISUAL DEVICE @ +80" W/ CONDUIT STUBBED TO ATTIC (SEE ELECT.)
 - 12 JUNCTION BOX FOR FIRE ALARM EXTERIOR HORN @ +80" W/ CONDUIT STUBBED TO ATTIC (SEE ELECT.)
 - 13 4" x 4" x 2'-0" LONG COMMUNICATION GUTTER (SEE ELECT.)
 - 14 EXPANDED METAL VENTILATING CLOSURE SCREEN
- A 8'-0" LONG x 4'-0" HIGH ALUMINUM SLIDING WINDOW (SEE WINDOW SCHEDULE)
 - B 6'-0" LONG x 2'-0" HIGH ALUMINUM SLIDING WINDOW (SEE WINDOW SCHEDULE)
 - 1 3'-0" WIDE, 6'-0" HIGH METAL DOOR AND PRESSED METAL FRAME (SEE DOOR SCHEDULE)

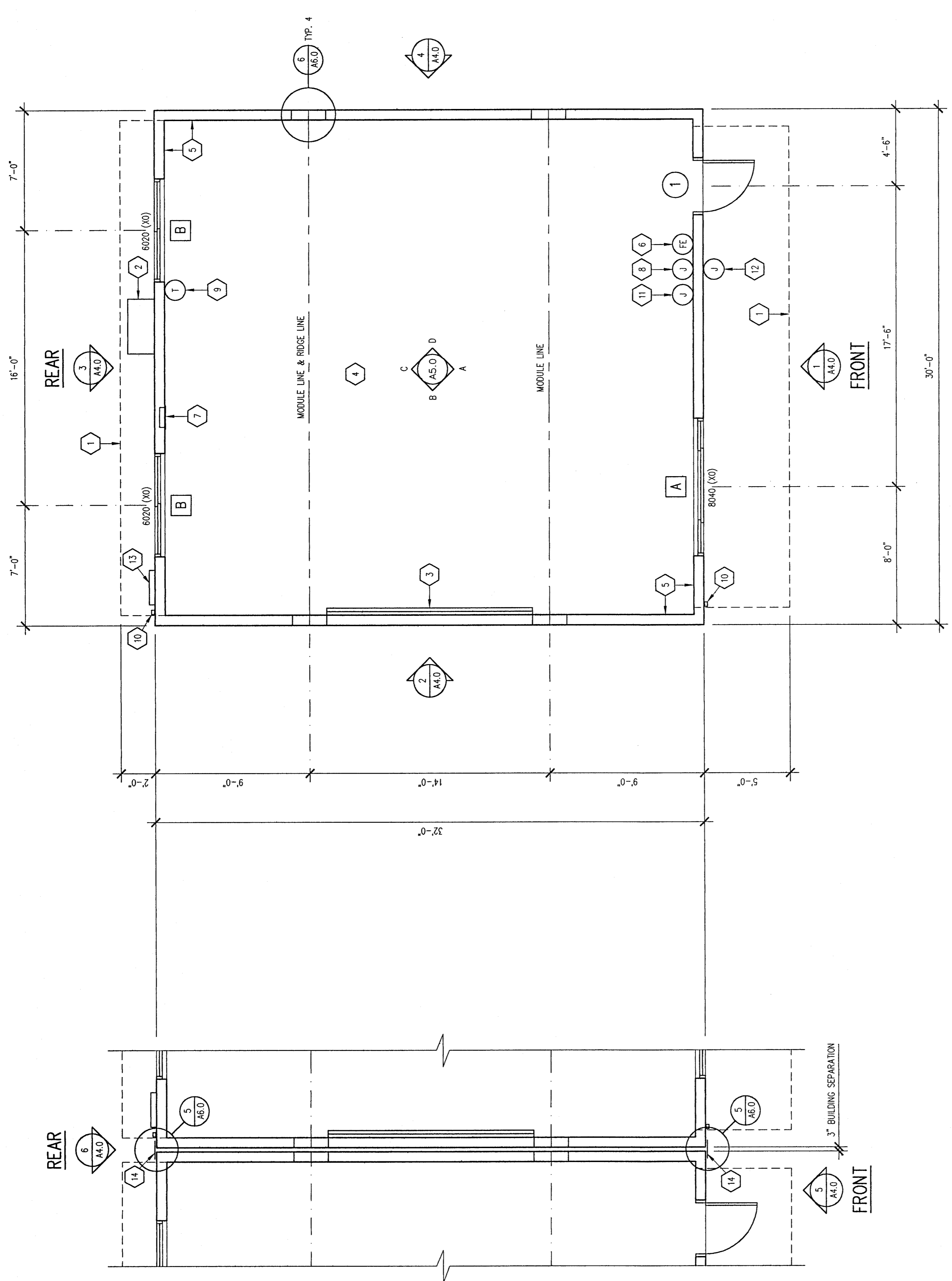
GENERAL NOTES

1. MECHANICALLY ATTACH METAL TAG ON ALL MODULES @ 48"-0" ON REAR EXTERIOR OF BUILDING WITH THE FOLLOWING INFORMATION INSCRIBED: D.S.A. APPLICATION NUMBER, MANUFACTURERS NAME AND SERIAL NUMBER, FLOOR DESIGN LINE LOAD & WIND LOAD.
2. INSULATION MATERIALS INSTALLED WITH FLOOR-CEILING ASSEMBLIES, ROOF-CEILING ASSEMBLIES, WALLS, CORNER SPACES, AND AT ALL OTHER UNDESIGNATED SPACES SHALL COMPLY WITH THE FOLLOWING REQUIREMENTS:
 - 1) FOAM PLASTIC INSULATION SHALL COMPLY WITH SEC. 2602
 - 2) WHEN MATERIALS ARE INSTALLED IN CONCEALED SPACES OF TYPE I, II, IV, AND V CONSTRUCTION, THE FLAME SPREAD AND SMOKE DEVELOPED LIMITATIONS DO NOT APPLY TO FACINGS. IF THE FACING IS INSTALLED IN SUBSTANTIAL CONTACT WITH THE UNEXPOSED SURFACE OF THE CEILING, FLOOR OR WALL FINISH (SEE 707.3)

REVISIONS

NO.	DATE	DESCRIPTION

D.S.A.



"A" AS SHOWN
"B" OPPOSITE HAND

FLOOR PLAN

SCALE : 1/4" = 1'-0"

CONDITION @ ADJACENT BUILDING LOCATION

PARTIAL FLOOR PLANS

SCALE : 1/4" = 1'-0"

FILE NO. A03-101724
IDENTIFICATION STAMP
DIV. OF REGULATION SERVICES
DATE: MAR. 09 1999