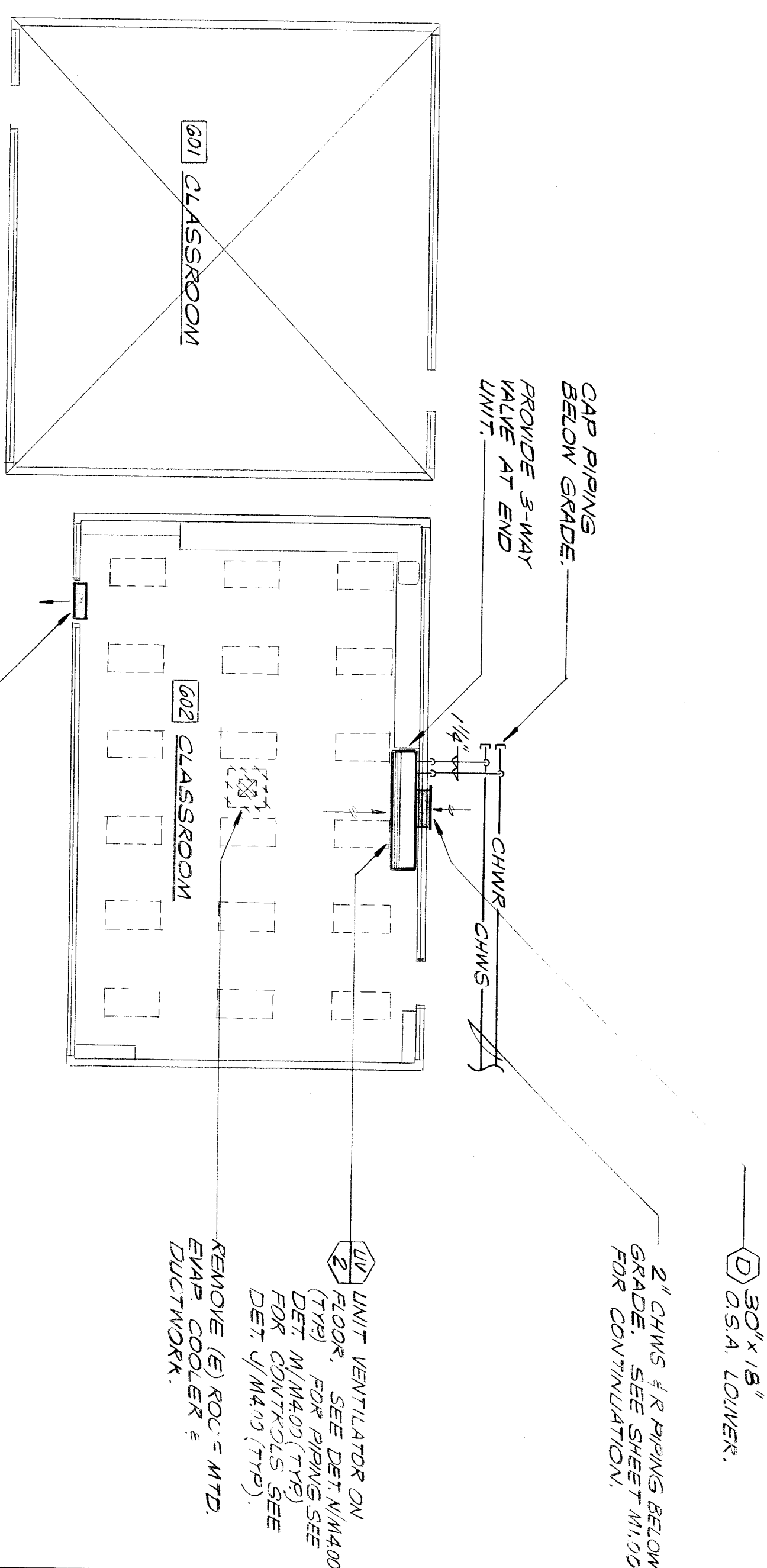
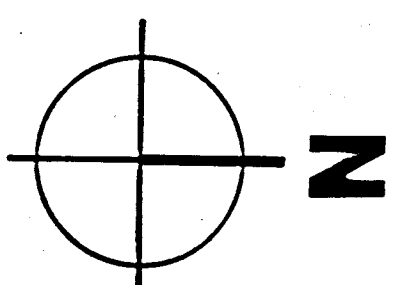
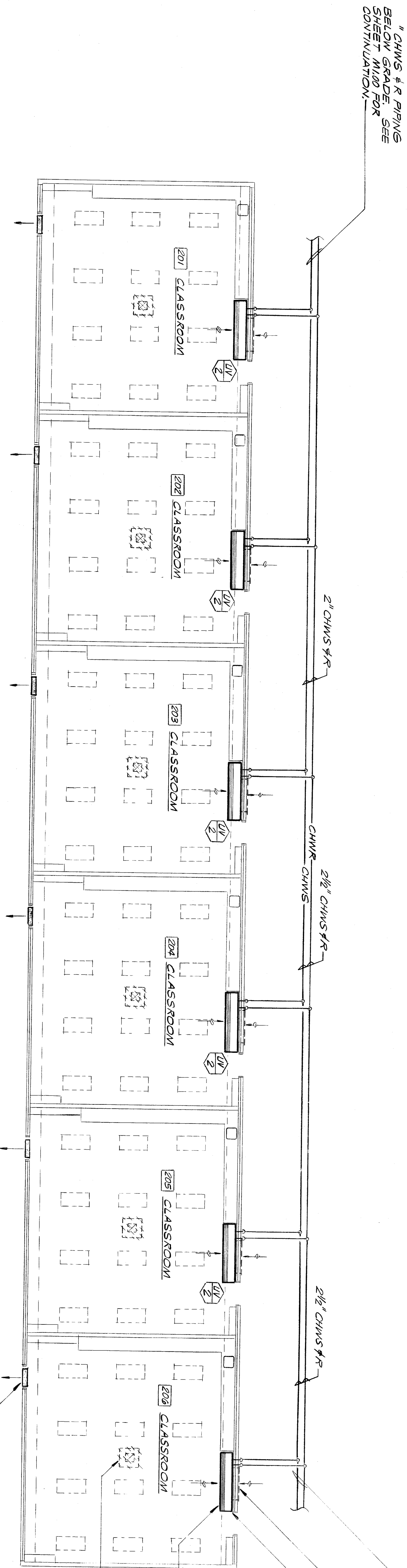
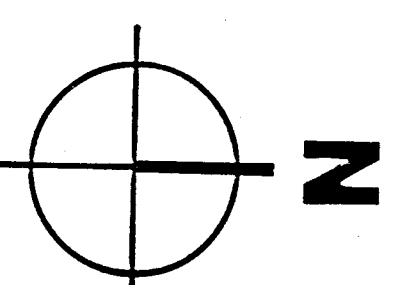


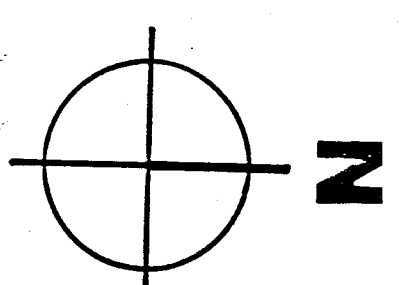
**BUILDING 300**  
**AIR CONDITIONING PLAN**  
SCALE: 1/8"=1'-0"



**BUILDING 600**  
**AIR CONDITIONING PLAN**  
SCALE: 1/8"=1'-0"



**BUILDING 200**  
**AIR CONDITIONING PLAN**  
SCALE: 1/8"=1'-0"



3" CHWS & R PIPING BELOW GRADE. SEE SHEET M100 FOR CONTINUATION.

UNIT VENTILATOR ON FLOOR. PIPING SEE DET. M1400 (TYP) FOR CONTROLS. SEE DET. V/M400 (TYP).

(E) O.S.A. LOWER TO REMAIN.

3" CHWS & R BELOW GRADE. SEE SHEET M100.

REMOVE (E) UNIT VENTILATOR & CAP (E) PIPING BEHIND FIN SURFACE. (TYPICAL OF 6)

REMOVE (E) ROOF-MTD. AIR COOLER & DUCTWORK. (TYPICAL OF 6)

BAKOMETRIC RELIEF ASSEMBLY. SEE DET. A & B / M401.

**ROCKWELL SCHOOL MODERNIZATION**

F-012

BAKERSFIELD CITY SCHOOL DISTRICT

**Donald R. Lawrence & Associates**  
CONSULTING MECHANICAL ENGINEERS, INCORPORATED  
1000 N. VALLEY BLVD., SUITE 200  
BAKERSFIELD, CALIFORNIA 93311  
(805) 833-4411

**bfgc architects planners inc.**  
p.o. box 8658 bakersfield california 93308-8658  
31 south real road 93309 (805) 832 8122

C-3132 JAC-6554 C-8021 C-8702

DR. *DR. [Signature]*

drawn by D. ENNS  
chk'd by G. NVE

2.02

2.02