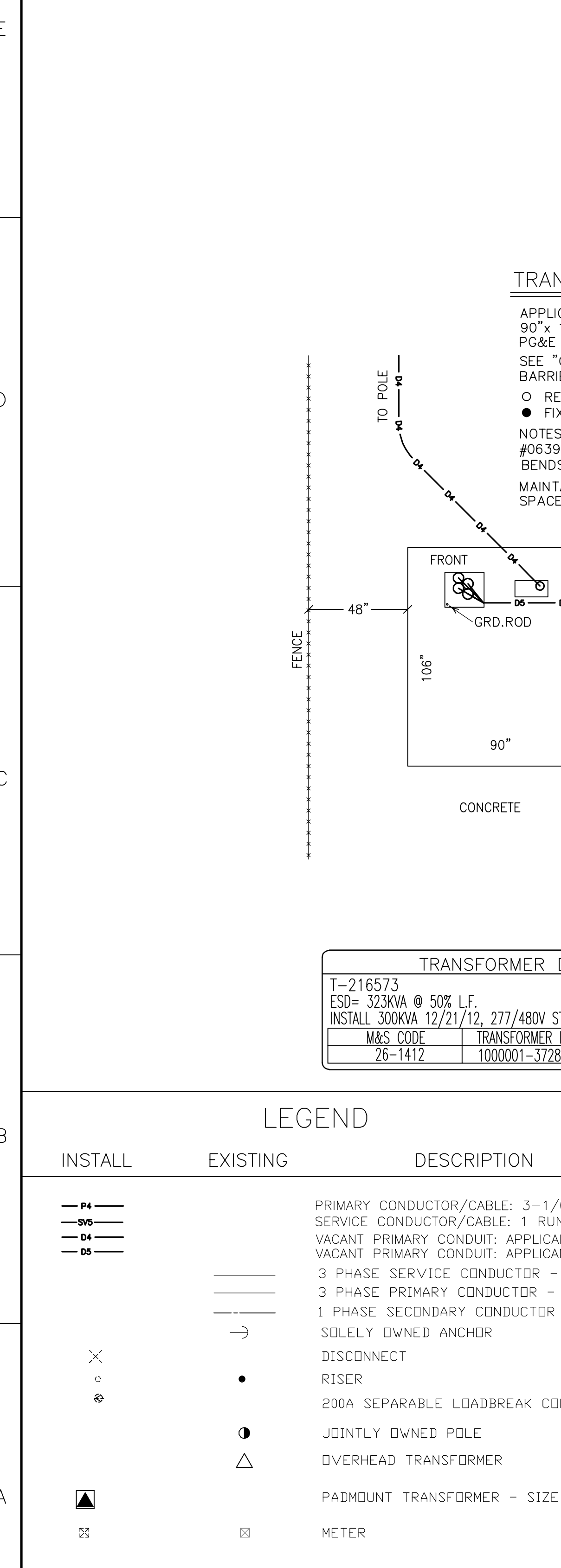


| EQUIPMENT CHECK LIST | | | |
|----------------------|-------------|----------------|------|
| LOC. # | EQUIP # | LIST COMPL. BY | DATE |
| 1 | DISC 979709 | | |
| 3 | T-216573 | | |

| CABLE & PULLING DATA FOR ENCLOSURE N/A | | | | | | |
|----------------------------------------|---------------|------------|-------------------|----------------|--------------|---------------|
| FROM ENCLOSURE | NO. of CABLES | CABLE TYPE | ESTIMATED TENSION | ACTUAL TENSION | GALLONS LUBE | FRT END PACKS |
| N/A | 3 | 1/0 | 50LBS | | 1 | 2 |

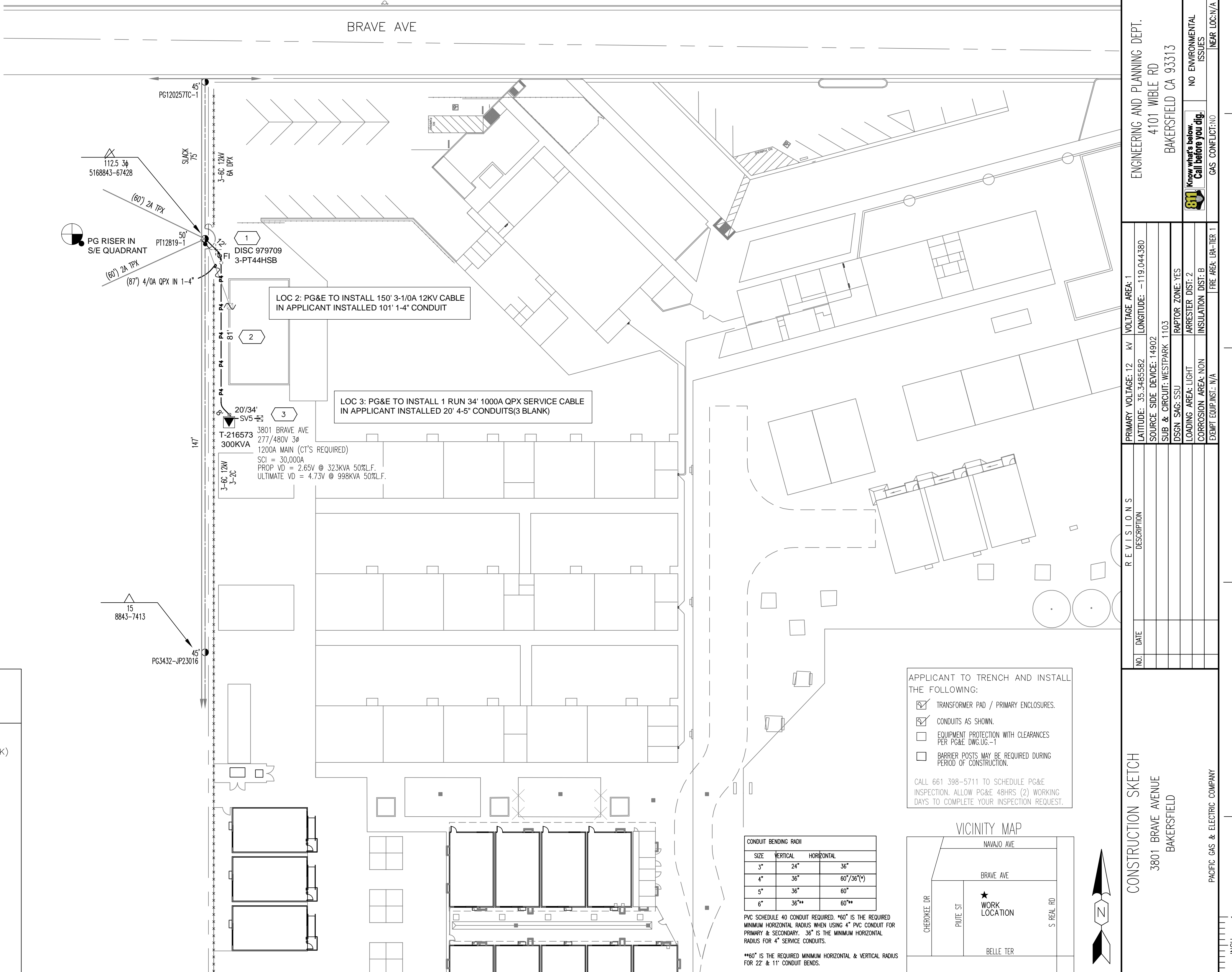


TRANSFORMER PAD DETAIL

APPLICANT TO PROVIDE AND INSTALL 90" x 106" PAD-BOX FOR DF LB TX. PG&E CODE: 040292
 SEE "GREEN BOOK" DWG.051122 PG.14 FOR BARRIER POST ARRANGEMENT.
 ○ REMOVABLE BARRIER POST
 ● FIXED BARRIER POST
 NOTES: REFER TO THE GREEN BOOK DWG. #063928 PAGE 4, TABLE 4 FOR RADIUS OF BENDS.
 MAINTAIN 8'-0" UNOBSTRUCTED WORKING SPACE IN FRONT OF TRANSFORMER.

| TRANSFORMER DATA | | |
|-----------------------------------------------------|----------------|------------|
| T-216573 | | |
| ESD= 323KVA @ 50% L.F. | | |
| INSTALL 300KVA 12/21/12, 277/480V STYLE 2E 3ø 4W TX | | |
| M&S CODE | TRANSFORMER ID | INSP. DATE |
| 26-1412 | 1000001-37287 | |

| INSTALL | EXISTING | DESCRIPTION |
|---------|----------|----------------------------------------------------------------------------------------|
| —P4— | | PRIMARY CONDUCTOR/CABLE: 3-1/0A 12KV IN APPLICANT INSTALLED 1-4" CONDUIT |
| —SV5— | | SERVICE CONDUCTOR/CABLE: 1 RUN 1000A QPX IN APPLICANT INSTALLED 4-5" CONDUITS(3 BLANK) |
| —D4— | | VACANT PRIMARY CONDUIT: APPLICANT INSTALLED 1-4" |
| —D6— | | VACANT PRIMARY CONDUIT: APPLICANT INSTALLED 4-5" |
| — | | 3 PHASE SERVICE CONDUCTOR - SIZE AS SHOWN |
| — | | 3 PHASE PRIMARY CONDUCTOR - SIZE AS SHOWN |
| — | | 1 PHASE SECONDARY CONDUCTOR - SIZE AS SHOWN |
| → | | SOLELY OWNED ANCHOR |
| ⊗ | | DISCONNECT |
| ⊙ | | RISER |
| ● | | 200A SEPARABLE LOADBREAK CONNECTOR |
| ⊙ | | JOINTLY OWNED POLE |
| △ | | OVERHEAD TRANSFORMER |
| ▲ | | PADMOUNT TRANSFORMER - SIZE AS SHOWN |
| ⊞ | | METER |



LOC 2: PG&E TO INSTALL 150' 3-1/0A 12KV CABLE IN APPLICANT INSTALLED 101' 1-4" CONDUIT

LOC 3: PG&E TO INSTALL 1 RUN 34' 1000A QPX SERVICE CABLE IN APPLICANT INSTALLED 20' 4-5" CONDUITS(3 BLANK)

| CONDUIT BENDING RADI | | |
|----------------------|----------|------------|
| SIZE | VERTICAL | HORIZONTAL |
| 3" | 24" | 36" |
| 4" | 36" | 60'/36(*) |
| 5" | 36" | 60" |
| 6" | 36** | 60** |

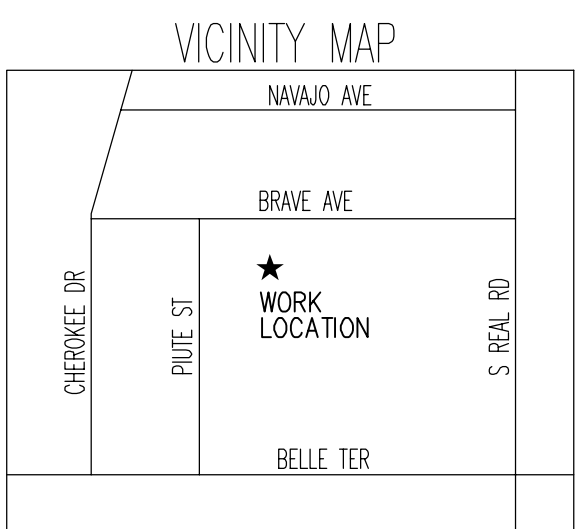
PVC SCHEDULE 40 CONDUIT REQUIRED. *60" IS THE REQUIRED MINIMUM HORIZONTAL RADIUS WHEN USING 4" PVC CONDUIT FOR PRIMARY & SECONDARY. **36" IS THE MINIMUM HORIZONTAL RADIUS FOR 4" SERVICE CONDUITS.

**60" IS THE REQUIRED MINIMUM HORIZONTAL & VERTICAL RADIUS FOR 22' & 11' CONDUIT BENDS.

APPLICANT TO TRENCH AND INSTALL THE FOLLOWING:

- TRANSFORMER PAD / PRIMARY ENCLOSURES.
- CONDUITS AS SHOWN.
- EQUIPMENT PROTECTION WITH CLEARANCES PER PG&E DWG.UG-1
- BARRIER POSTS MAY BE REQUIRED DURING PERIOD OF CONSTRUCTION.

CALL 661 398-5711 TO SCHEDULE PG&E INSPECTION. ALLOW PG&E 48HRS (2) WORKING DAYS TO COMPLETE YOUR INSPECTION REQUEST.



| | |
|---------------------|-----------------|
| EST: TOM MCLEOD | 661-473-3379 |
| AD: SEAN CASTELLO | 661-566-1742 |
| SUP: SUZANNE ADAMS | 661-808-9330 |
| REP: PAWELA HARWOOD | 661-335-2806 |
| PLNR: DAVID HART | 559-385-4719 |
| NOTE: 124531389 | JPAF |
| SCALE: 1"=30' | DATE: 2/13/2023 |
| PM: 35409698 | SHEET: 1 OF 1 |

| | |
|--------------------------------|---------------|
| ENGINEERING AND PLANNING DEPT. | 4101 WIBLE RD |
| BAKERSFIELD CA 93313 | |

| | |
|-------------------------|-------------------------|
| NO ENVIRONMENTAL ISSUES | NO ENVIRONMENTAL ISSUES |
| GAS CONFLICT: NO | NEAR LOC: N/A |

| | |
|-------------------------------|------------------------|
| PRIMARY VOLTAGE: 12 kV | VOLTAGE AREA: 1 |
| LATITUDE: 35.3485582 | LONGITUDE: -119.044380 |
| SOURCE SIDE DEVICE: 14902 | |
| SUB & CIRCUIT: WESTPARK 1 T03 | |
| DSGN SAG: SSU | RAPTOR ZONE: YES |
| LOADING AREA: LIGHT | ARRESTER DIST: 2 |
| CORROSION AREA: NON | INSULATION DIST: B |
| EQUIP. EQUIP. INST: N/A | FIRE WBL: 0A-TIER 1 |

| NO. | DATE | DESCRIPTION |
|-----|------|-------------|
| | | REVISIONS |

CONSTRUCTION SKETCH

3801 BRAVE AVENUE

BAKERSFIELD

PACIFIC GAS & ELECTRIC COMPANY