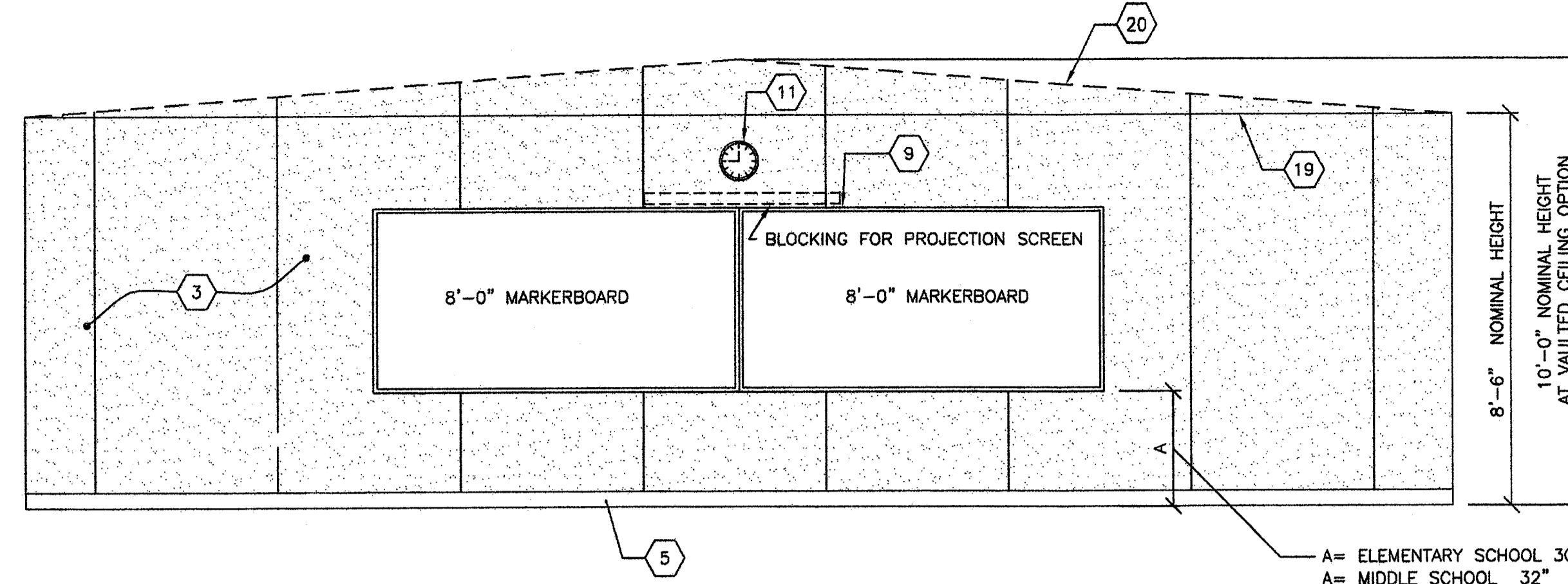
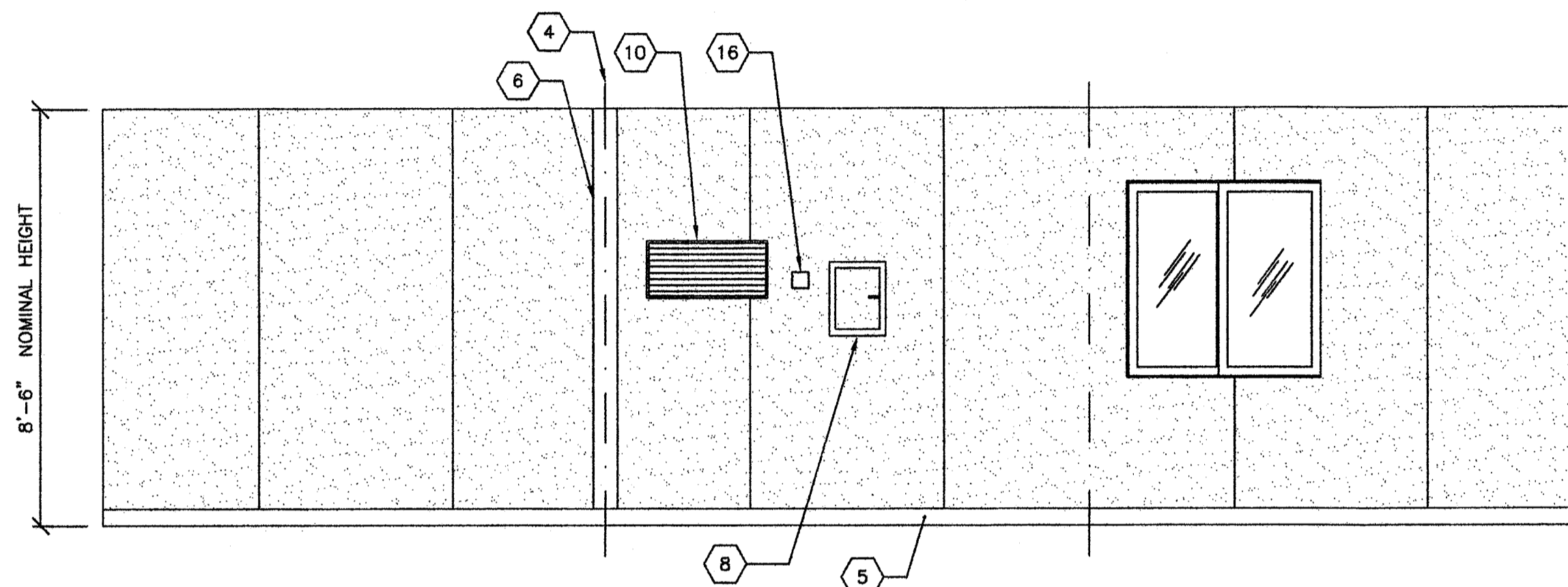


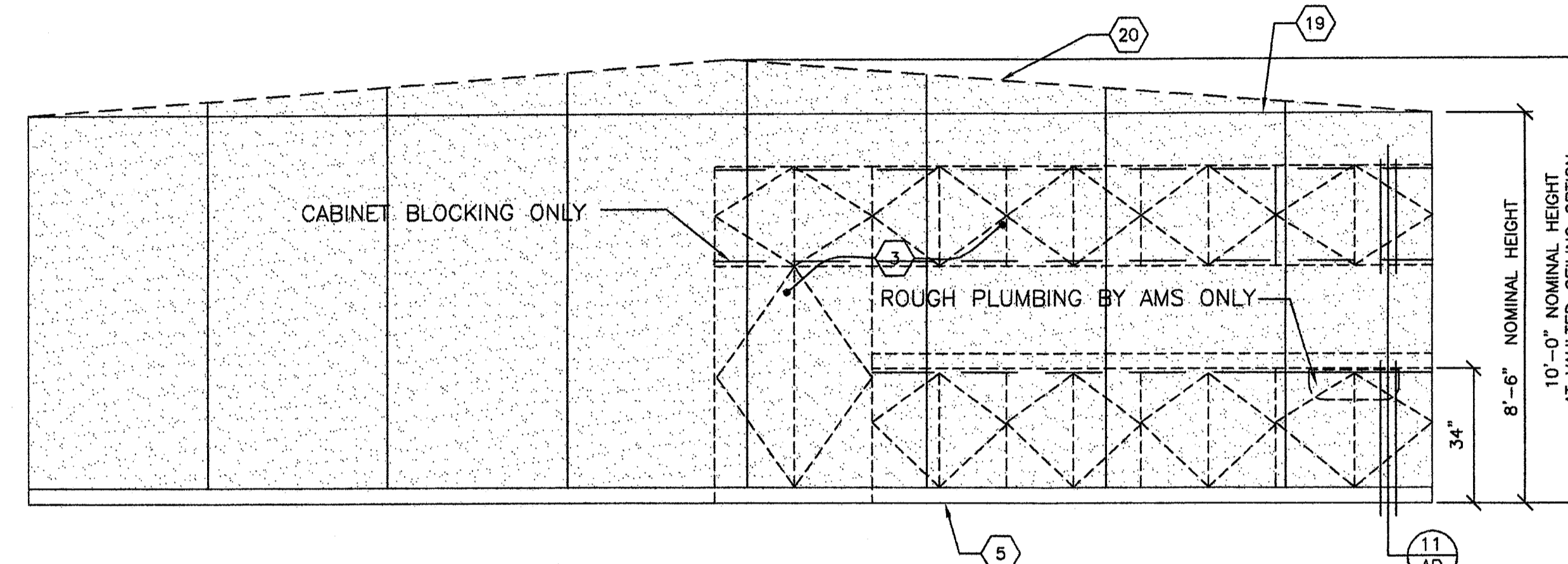
1 TYPICAL CLASSROOM FRONT END WALL ELEVATION
A3 3/8"=1'-0"



4 TYPICAL CLASSROOM SIDE WALL ELEVATION
A3 3/8"=1'-0"



2 TYPICAL CLASSROOM REAR END WALL ELEVATION
A3 3/8"=1'-0"



3 TYPICAL CLASSROOM SIDE WALL ELEVATION
A3 3/8"=1'-0"

- KEY NOTES -**
- 1 WINDOW TYP.
 - 2 TYP EXTERIOR DOOR
 - 3 VINYL WRAPPED TACKABLE WALLS
 - 4 TYP MOD LINE
 - 5 TOP SET BASE
 - 6 TRIM PIECE (FIELD INSTALL)
 - 7 NOT USED
 - 8 ELECTRICAL PANEL (LOCATION MAY VARY)
 - 9 (2) 4'x8' MARKER BOARDS
 - 10 HVAC GRILL (LOCATION MAY VARY)
 - 11 CLOCK
 - 12 PULL STATION J-BOX 48" A.F.F SEE ELECTRICAL SHEETS
 - 13 HORN/STROBE J-BOX SEE ELECTRICAL SHEETS
 - 14 LIGHT SWITCH SEE ELECTRICAL SHEETS
 - 15 EXIT TACTILE SIGN PER DETAIL 10/AD (BY OWNER)
 - 16 THERMOSTAT 48" A.F.F SEE MECHANICAL SHEETS (LOCATION MAY VARY)
 - 17 FIRE EXTINGUISHER TOP OF BRACKET @ 4'48" AFF PROTRUSION MAX 4" FROM WALL IF HIGHER THAN 27" A.F.F
 - 18 TYP DUPLEX OUTLET (SEE ELECTRICAL SHEETS)
 - 19 FLAT CEILING @ 8'-6" NOM.
 - 20 OPTIONAL VAULTED CEILING

ROOM FINISHES SCHEDULE									
ROOM NUMBER	ROOM NAME	FLOOR	FINISHES					REMARKS	
			BASE	FRONT	REAR	RIGHT	LEFT		
#	CLASSROOM	A	D	F	F	F	J	8'-6"	

DOOR SCHEDULE									
DOOR NO.	FRAME OPENING SIZE	MATERIAL	FIRE RATING	HARDWARE SET NO.	QUANTITY	FRAMES			REMARKS
						MATERIAL	HEAD DETAIL	JAMB DETAIL	
1	3'-0" x 7'-0"	HM		A	2	STL	9/A4A	4/A4A	*PANIC HARDWARE
2	3'-0" x 7'-0"	HM		A	1	STL	9/A4A	4/A4A	
3	2'-0" x 7'-0"	HM		A	1	STL	9/A4A	4/A4A	

WINDOW SCHEDULE								
WINDOW NO.	AMT.	TYPE	WIDTH	HEIGHT	FINISH	GLASS TYPE	U-FACTOR	SHGC
1	1	SLIDER	6'-0"	4'-0"	BRONZE	SOLAR GRAY	0.780	0.430
2	1	SLIDER	4'-0"	4'-0"	BRONZE	SOLAR GRAY	0.780	0.430

EXTERIOR LITE - 3/16" MINIMUM TEMPERED GLASS OR LAMINATED AS - 1 GLASS OF SOLAR GRAY GLARE REDUCING TYPE WITH A LIGHT TRANSMISSION FACTOR OF 45% MAXIMUM.

REVISIONS		
NO	DATE	DESCRIPTION

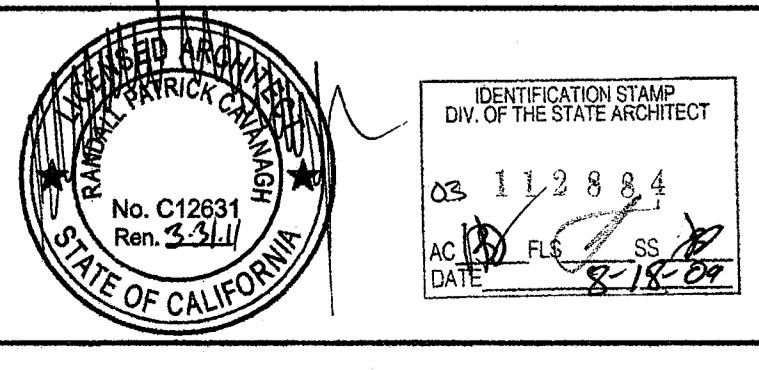
DATE: 07/02/09
SCALE: NOTED
DRAWN BY: DM
SERIAL NO.:

CUSTOMER:
**BAKERSFIELD CITY SCHOOL DISTRICT
FREMONT ELEMENTARY SCHOOL**

2 1/2:12 PITCHED ROOF 30' x 32' RELOCATABLE BUILDINGS
TYPICAL INTERIOR ELEVATIONS



APPROVALS:



IDENTIFICATION STAMP
DIV. OF THE STATE ARCHITECT
OFFICE OF REGULATION SERVICES

AC: _____ FL: _____ SS: _____
DATE: _____

PROJECT No.
A3

THESE DRAWINGS AND SPECIFICATIONS ARE THE PROPERTY OF AMERICAN MODULAR SYSTEMS AND ARE NOT TO BE REPRODUCED, CHANGED OR COPIED IN ANY FORM OR MANNER, NOR ARE THEY TO BE ASSIGNED TO ANY THIRD PARTY WITHOUT THE WRITTEN AUTHORIZATION OF AMERICAN MODULAR SYSTEMS.