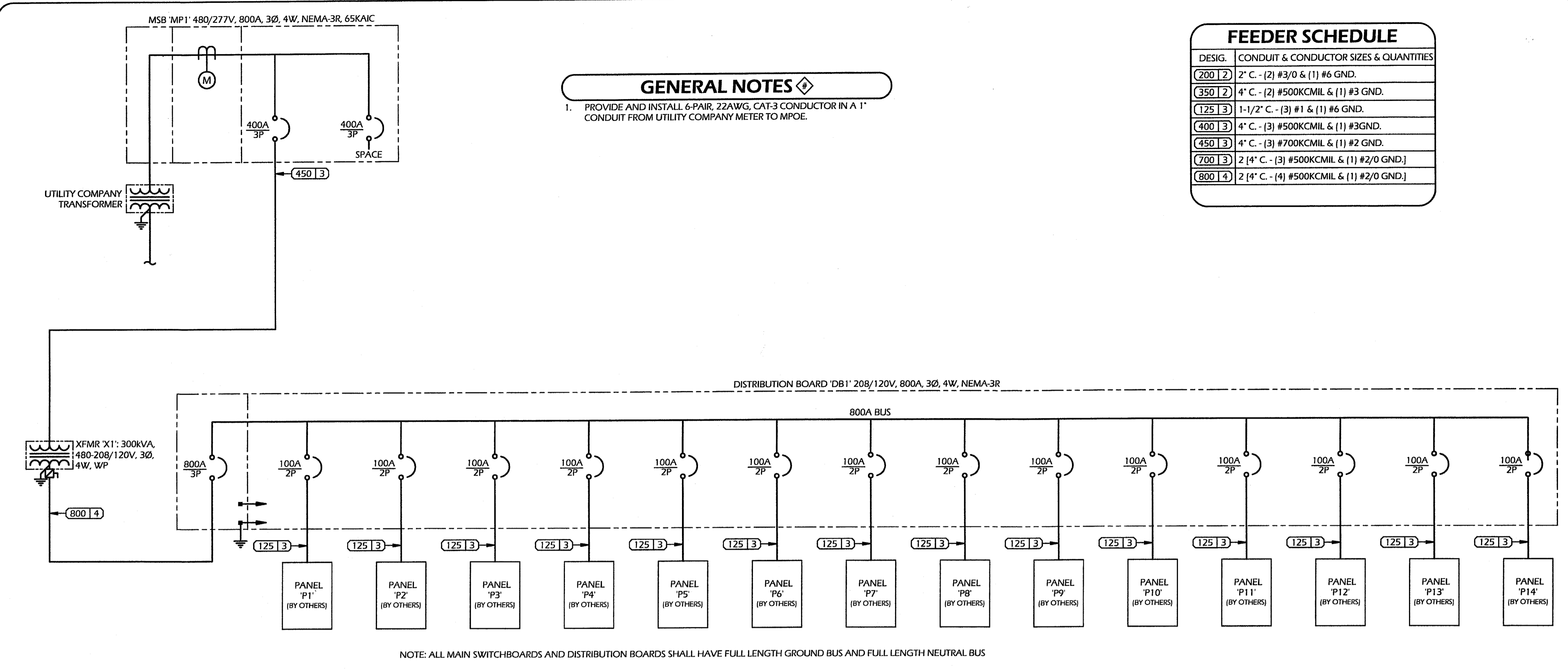


PULL BOX SCHEDULE			
DESIGNATOR	SIZE	REMARKS	PHASE
P1	R27	POWER, SPARE	1
P2	R27	POWER, SPARE	1
P3	R27	POWER, SPARE	1
P4	N40	POWER, SPARE	1
P5	N16	POWER, SPARE	1
P6	N16	POWER, SPARE	1
P7	N16	POWER, SPARE	1
P8	N16	POWER, SPARE	1
P9	N16	POWER, SPARE	1
P10	N16	POWER, SPARE	1
P11	N16	POWER, SPARE	1
P12	N16	POWER, SPARE	1
P13	N16	POWER, SPARE	1
P14	N16	POWER, SPARE	2
P15	N16	POWER, SPARE	2
P16	N16	POWER, SPARE	2
P17	N16	POWER, SPARE	2
C1	N36	DATA/TEL/TV/SPARE	1
C2	N36	DATA/TEL/TV/SPARE	1
C3	N36	DATA/TEL/TV/SPARE	1
C4	N36	DATA/TEL/TV/SPARE	1
C5	N36	DATA/TEL/TV/SPARE	1
C6	N36	DATA/TEL/TV/SPARE	1
C7	N36	DATA/TEL/TV/SPARE	1
C8	N36	DATA/TEL/TV/SPARE	1
C9	N36	DATA/TEL/TV/SPARE	1
C10	N36	DATA/TEL/TV/SPARE	1
C11	N36	DATA/TEL/TV/SPARE	1
C12	N36	DATA/TEL/TV/SPARE	2
C13	N36	DATA/TEL/TV/SPARE	2
C14	N36	DATA/TEL/TV/SPARE	2
C15	N36	DATA/TEL/TV/SPARE	2
S1	N36	PA/FA/IA	1
S2	N36	PA/FA/IA	1
S3	N36	PA/FA/IA	1
S4	N36	PA/FA/IA	1
S5	N36	PA/FA/IA	1
S6	N36	PA/FA/IA	1
S7	N36	PA/FA/IA	1
S8	N36	PA/FA/IA	1
S9	N36	PA/FA/IA	1
S10	N36	PA/FA/IA	1
S11	N36	PA/FA/IA	1
S12	N36	PA/FA/IA	2
S13	N36	PA/FA/IA	2
S14	N36	PA/FA/IA	2
S15	N36	PA/FA/IA	2

NOTES:
 1. ALL PULL BOXES SHALL BE EITHER BROOKS, CHRISTY, OR EQUIVALENT.
 2. ALL PULL BOXES SHALL BE PROVIDED WITH EXTENSION RINGS AND BOLT DOWN COVERS AS REQUIRED TO SUIT THE APPLICATION. VERIFY PULL BOX LOCATIONS REQUIRING FULL TRAFFIC COVERS WITH THE ARCHITECT AND CIVIL ENGINEER.
 3. LABEL PULL BOXES 'ELECTRICAL', 'SIGNAL' OR 'COMMUNICATIONS' AS REQUIRED.



SINGLE LINE DIAGRAM
 NOT TO SCALE

GENERAL NOTES
 1. PROVIDE AND INSTALL 6-PAIR, 22AWG, CAT-3 CONDUCTOR IN A 1" CONDUIT FROM UTILITY COMPANY METER TO MPOE.

FEEDER SCHEDULE	
DESIG.	CONDUIT & CONDUCTOR SIZES & QUANTITIES
(200) 2	2" C. - (2) #3/0 & (1) #6 GND.
(350) 2	4" C. - (2) #500KCMIL & (1) #3 GND.
(125) 3	1-1/2" C. - (3) #1 & (1) #6 GND.
(400) 3	4" C. - (3) #500KCMIL & (1) #3 GND.
(450) 3	4" C. - (3) #700KCMIL & (1) #2 GND.
(700) 3	2 [4" C. - (3) #500KCMIL & (1) #2/0 GND.]
(800) 4	2 [4" C. - (4) #500KCMIL & (1) #2/0 GND.]

DUCT BANK SCHEDULE																											
#	#	POWER							COMMUNICATION				PHASE	#	#	POWER							COMMUNICATION				PHASE
		POWER	SPARE	DATA	TELEPHONE	CATV	PA	SPARE	FIRE ALARM	SIGNAL	POWER	SPARE				DATA	TELEPHONE	CATV	PA	SPARE	FIRE ALARM	SIGNAL					
1	(2) 4"	-	-	-	-	-	-	-	-	-	-	-	1	20	(1) 1-1/2"	-	(1) 1-1/2"	(1) 1-1/2"	(1) 1-1/2"	(1) 1-1/2"	(1) 1-1/2"	(1) 1-1/2"	(1) 1-1/2"	(1) 1-1/2"	1		
2	(1) 4"	(1) 4"	-	-	-	-	-	-	-	-	-	-	1	21	(1) 1-1/2"	-	(1) 1-1/2"	(1) 1-1/2"	(1) 1-1/2"	(1) 1-1/2"	(1) 1-1/2"	(1) 1-1/2"	(1) 1-1/2"	(1) 1-1/2"	1		
3	(1) 4"	(1) 4"	-	-	-	-	-	-	-	-	-	-	1	22	(1) 1-1/2"	-	(1) 1-1/2"	(1) 1-1/2"	(1) 1-1/2"	(1) 1-1/2"	(1) 1-1/2"	(1) 1-1/2"	(1) 1-1/2"	(1) 1-1/2"	1		
4	(1) 4"	-	-	-	-	-	-	-	-	-	-	-	1	23	-	-	(1) 1-1/2"	(1) 1-1/2"	(1) 1-1/2"	(1) 1-1/2"	(1) 1-1/2"	(1) 1-1/2"	(1) 1-1/2"	(1) 1-1/2"	1		
5	(1) 4"	-	-	-	-	-	-	-	-	-	-	-	1	24	-	-	(1) 1-1/2"	(1) 1-1/2"	(1) 1-1/2"	(1) 1-1/2"	(1) 1-1/2"	(1) 1-1/2"	(1) 1-1/2"	(1) 1-1/2"	1		
6	-	-	-	(1) 1-1/2"	(1) 1-1/2"	(1) 1-1/2"	(1) 1-1/2"	-	-	-	-	-	1	25	(7) 1-1/2"	-	(1) 1-1/2"	(1) 1-1/2"	(1) 1-1/2"	(1) 1-1/2"	(1) 1-1/2"	(1) 1-1/2"	(1) 1-1/2"	(1) 1-1/2"	1		
7	(14) 1-1/2"	-	-	-	-	-	-	-	-	-	-	-	1	26	(6) 1-1/2"	-	(1) 1-1/2"	(1) 1-1/2"	(1) 1-1/2"	(1) 1-1/2"	(1) 1-1/2"	(1) 1-1/2"	(1) 1-1/2"	(1) 1-1/2"	1		
8	(14) 1-1/2"	-	-	(1) 1-1/2"	(1) 1-1/2"	(1) 1-1/2"	(1) 1-1/2"	-	-	-	-	-	1	27	(1) 1-1/2"	-	(1) 1-1/2"	(1) 1-1/2"	(1) 1-1/2"	(1) 1-1/2"	(1) 1-1/2"	(1) 1-1/2"	(1) 1-1/2"	(1) 1-1/2"	2		
9	(7) 1-1/2"	-	(1) 1-1/2"	(1) 1-1/2"	(1) 1-1/2"	(1) 1-1/2"	(1) 1-1/2"	(1) 1-1/2"	(1) 1-1/2"	(1) 1-1/2"	(1) 1-1/2"	1	28	(1) 1-1/2"	-	(1) 1-1/2"	(1) 1-1/2"	(1) 1-1/2"	(1) 1-1/2"	(1) 1-1/2"	(1) 1-1/2"	(1) 1-1/2"	(1) 1-1/2"	(1) 1-1/2"	2		
10	(1) 1-1/2"	-	(1) 1-1/2"	(1) 1-1/2"	(1) 1-1/2"	(1) 1-1/2"	(1) 1-1/2"	(1) 1-1/2"	(1) 1-1/2"	(1) 1-1/2"	(1) 1-1/2"	1	29	(5) 1-1/2"	-	(1) 1-1/2"	(1) 1-1/2"	(1) 1-1/2"	(1) 1-1/2"	(1) 1-1/2"	(1) 1-1/2"	(1) 1-1/2"	(1) 1-1/2"	(1) 1-1/2"	2		
11	(6) 1-1/2"	-	(1) 1-1/2"	(1) 1-1/2"	(1) 1-1/2"	(1) 1-1/2"	(1) 1-1/2"	(1) 1-1/2"	(1) 1-1/2"	(1) 1-1/2"	(1) 1-1/2"	1	30	(1) 1-1/2"	-	(1) 1-1/2"	(1) 1-1/2"	(1) 1-1/2"	(1) 1-1/2"	(1) 1-1/2"	(1) 1-1/2"	(1) 1-1/2"	(1) 1-1/2"	(1) 1-1/2"	2		
12	(1) 1-1/2"	-	(1) 1-1/2"	(1) 1-1/2"	(1) 1-1/2"	(1) 1-1/2"	(1) 1-1/2"	(1) 1-1/2"	(1) 1-1/2"	(1) 1-1/2"	(1) 1-1/2"	1	31	(4) 1-1/2"	-	(1) 1-1/2"	(1) 1-1/2"	(1) 1-1/2"	(1) 1-1/2"	(1) 1-1/2"	(1) 1-1/2"	(1) 1-1/2"	(1) 1-1/2"	(1) 1-1/2"	2		
13	(5) 1-1/2"	-	(1) 1-1/2"	(1) 1-1/2"	(1) 1-1/2"	(1) 1-1/2"	(1) 1-1/2"	(1) 1-1/2"	(1) 1-1/2"	(1) 1-1/2"	(1) 1-1/2"	1	32	(1) 1-1/2"	-	(1) 1-1/2"	(1) 1-1/2"	(1) 1-1/2"	(1) 1-1/2"	(1) 1-1/2"	(1) 1-1/2"	(1) 1-1/2"	(1) 1-1/2"	(1) 1-1/2"	2		
14	(1) 1-1/2"	-	(1) 1-1/2"	(1) 1-1/2"	(1) 1-1/2"	(1) 1-1/2"	(1) 1-1/2"	(1) 1-1/2"	(1) 1-1/2"	(1) 1-1/2"	(1) 1-1/2"	1	33	(3) 1-1/2"	-	(1) 1-1/2"	(1) 1-1/2"	(1) 1-1/2"	(1) 1-1/2"	(1) 1-1/2"	(1) 1-1/2"	(1) 1-1/2"	(1) 1-1/2"	(1) 1-1/2"	2		
15	(4) 1-1/2"	-	(1) 1-1/2"	(1) 1-1/2"	(1) 1-1/2"	(1) 1-1/2"	(1) 1-1/2"	(1) 1-1/2"	(1) 1-1/2"	(1) 1-1/2"	(1) 1-1/2"	1	34	(1) 1-1/2"	-	(1) 1-1/2"	(1) 1-1/2"	(1) 1-1/2"	(1) 1-1/2"	(1) 1-1/2"	(1) 1-1/2"	(1) 1-1/2"	(1) 1-1/2"	(1) 1-1/2"	2		
16	(1) 1-1/2"	-	(1) 1-1/2"	(1) 1-1/2"	(1) 1-1/2"	(1) 1-1/2"	(1) 1-1/2"	(1) 1-1/2"	(1) 1-1/2"	(1) 1-1/2"	(1) 1-1/2"	1	35	(2) 1-1/2"	-	(1) 1-1/2"	(1) 1-1/2"	(1) 1-1/2"	(1) 1-1/2"	(1) 1-1/2"	(1) 1-1/2"	(1) 1-1/2"	(1) 1-1/2"	(1) 1-1/2"	2		
17	(3) 1-1/2"	-	(1) 1-1/2"	(1) 1-1/2"	(1) 1-1/2"	(1) 1-1/2"	(1) 1-1/2"	(1) 1-1/2"	(1) 1-1/2"	(1) 1-1/2"	(1) 1-1/2"	1	36	(1) 1-1/2"	-	(1) 1-1/2"	(1) 1-1/2"	(1) 1-1/2"	(1) 1-1/2"	(1) 1-1/2"	(1) 1-1/2"	(1) 1-1/2"	(1) 1-1/2"	(1) 1-1/2"	2		
18	(1) 1-1/2"	-	(1) 1-1/2"	(1) 1-1/2"	(1) 1-1/2"	(1) 1-1/2"	(1) 1-1/2"	(1) 1-1/2"	(1) 1-1/2"	(1) 1-1/2"	(1) 1-1/2"	1	37	(1) 1-1/2"	-	(1) 1-1/2"	(1) 1-1/2"	(1) 1-1/2"	(1) 1-1/2"	(1) 1-1/2"	(1) 1-1/2"	(1) 1-1/2"	(1) 1-1/2"	(1) 1-1/2"	2		
19	(2) 1-1/2"	-	(1) 1-1/2"	(1) 1-1/2"	(1) 1-1/2"	(1) 1-1/2"	(1) 1-1/2"	(1) 1-1/2"	(1) 1-1/2"	(1) 1-1/2"	(1) 1-1/2"	1															

Ownership of Documents
 This document, the ideas and designs incorporated herein, as an instrument of Professional Service is the property of Integrated Designs by SOMAM, Inc. and is not to be used, in whole or in part for any other project without written authorization.
 © COPYRIGHT 2009

Integrated designs by SOMAM, Inc.
 ARCHITECTURE • INTERIOR DESIGN • CONSTRUCTION MANAGEMENT
 801 N. Fresno, Suite 130 - Fresno, California 93710
 Phone (559) 438-0881 Fax (559) 438-0881 E-Mail: design@somam.com
 www.integrateddesigns.com

SINGLE LINE DIAGRAM, DUCT BANK, AND PULLBOX SCHEDULES

Project Name & Address:
FREMONT MAGNET ELEM. SCHOOL
14 CLASSROOM BLDG.
 BAKERSFIELD CITY SCHOOL DISTRICT
 607 TEXAS ST. BAKERSFIELD, CA 93307

Issue Date: _____ Date: _____ Designer: _____ DRC: _____ PC: _____

DSA Identification Stamp:

FILE # : _____
 IDENTIFICATION STAMP
 DIV. OF THE STATE ARCHITECT
 OFFICE OF REGULATION SERVICES
 03-112884
 AC BY FLS/SS
 DATE 8-18-09
 TRACKING # : _____

Stamp(s):

Job No: **3829.1**

Sheet No: **E1.2**

Release:

BORRELLI AND ASSOCIATES, INC.
 CONSULTING ELECTRICAL ENGINEERS
 180 N. ECHO AVENUE
 FRESNO, CALIFORNIA 93704
 Ph: 559-231-4118 Fax: 559-231-4354
 8/18/09
 HTTP://WWW.BORRELLIENGINEERING.COM
 E-MAIL: ADMIN@BORRELLIENGINEERING.COM