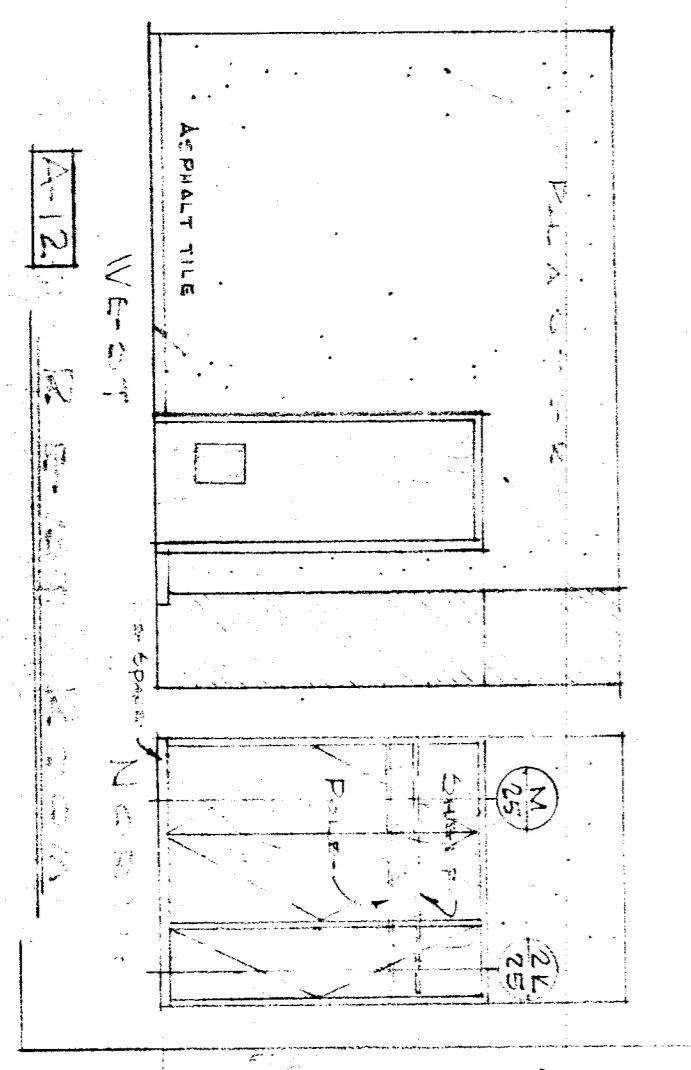
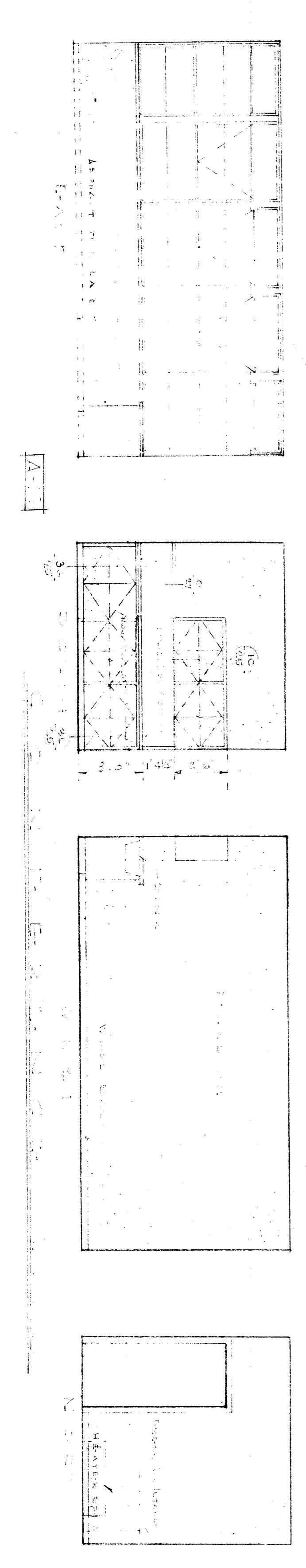
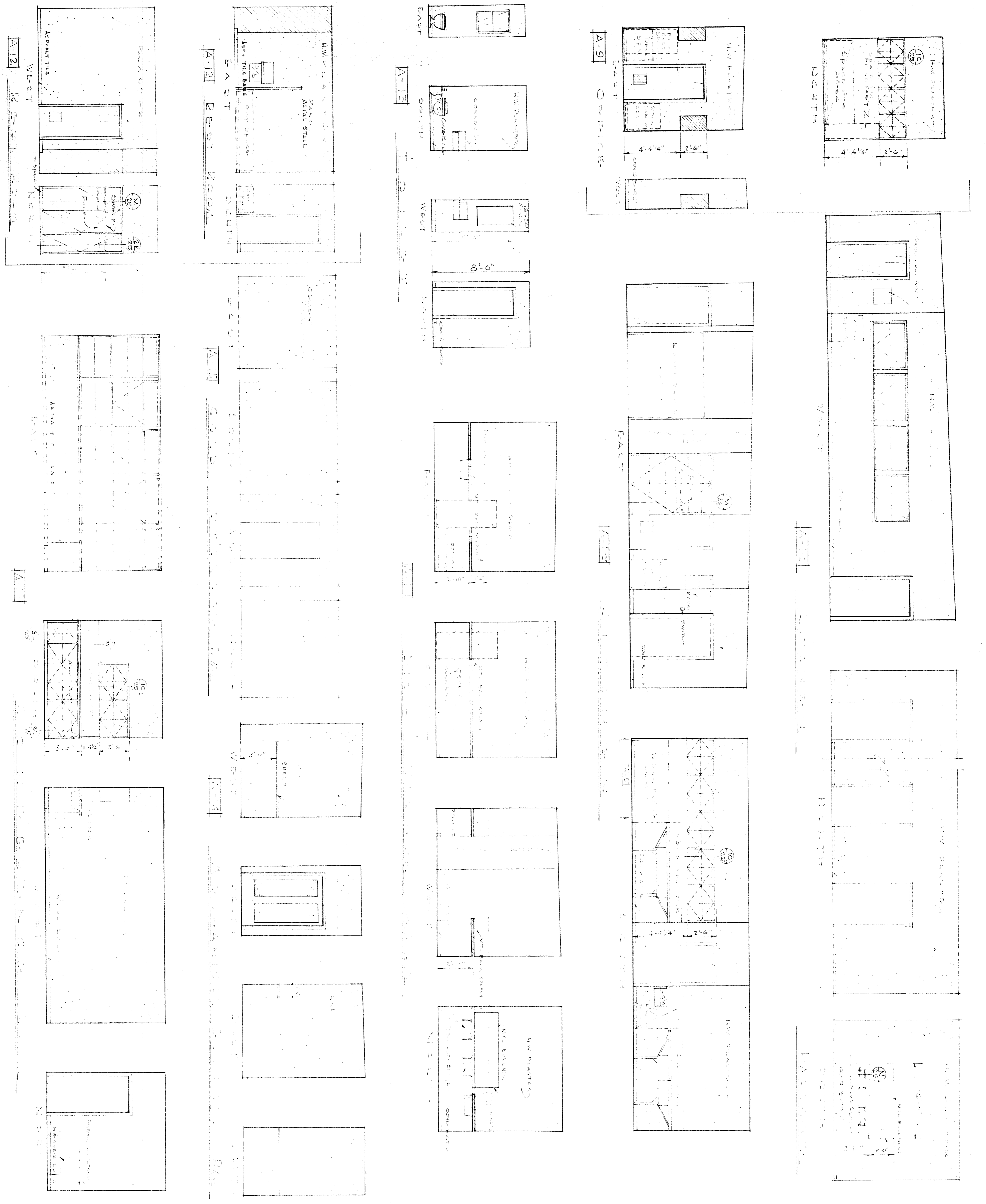


KITCHEN EQUIPMENT			
NO	NAME	DATE	REMARKS
A	VEGETABLE COUNTER	1-15-58	
B	VEGETABLE COUNTER	1-15-58	
C	VEGETABLE COUNTER	1-15-58	
D	VEGETABLE COUNTER	1-15-58	
E	VEGETABLE COUNTER	1-15-58	
F	VEGETABLE COUNTER	1-15-58	
G	VEGETABLE COUNTER	1-15-58	
H	VEGETABLE COUNTER	1-15-58	
I	VEGETABLE COUNTER	1-15-58	
J	VEGETABLE COUNTER	1-15-58	
K	VEGETABLE COUNTER	1-15-58	
L	VEGETABLE COUNTER	1-15-58	
M	VEGETABLE COUNTER	1-15-58	
N	VEGETABLE COUNTER	1-15-58	
O	VEGETABLE COUNTER	1-15-58	
P	VEGETABLE COUNTER	1-15-58	
Q	VEGETABLE COUNTER	1-15-58	
R	VEGETABLE COUNTER	1-15-58	
S	VEGETABLE COUNTER	1-15-58	
T	VEGETABLE COUNTER	1-15-58	
U	VEGETABLE COUNTER	1-15-58	
V	VEGETABLE COUNTER	1-15-58	
W	VEGETABLE COUNTER	1-15-58	
X	VEGETABLE COUNTER	1-15-58	
Y	VEGETABLE COUNTER	1-15-58	
Z	VEGETABLE COUNTER	1-15-58	



PROJECT: BAYVIEW ELEMENTARY SCHOOL, JEFFERSON COUNTY, MISSOURI  
 ARCHITECT: WILSON METCALF & PARTNERS, ST. LOUIS, MISSOURI  
 DATE: 1-15-58  
 SHEET NO. 17  
 SCALE: AS SHOWN