

Donald W. Renfro, AIA
Mark E. Russell, AIA
Carl G. Elert, AIA
K. Barbara Hoffman, AIA
Kenneth A. Kella, AIA
Jeffrey P. Kussner, AIA
Tommy W. Preston, AIA
Larry G. Wiggins, AIA

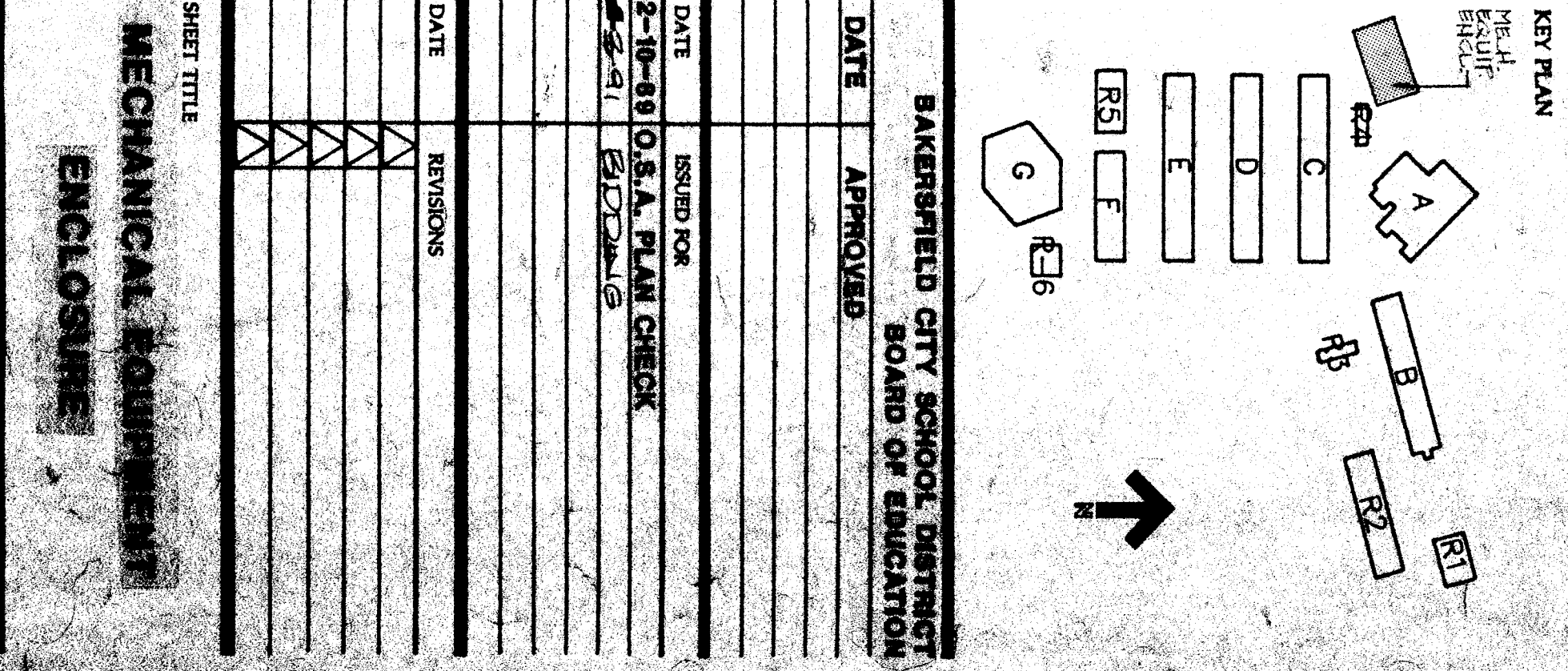
Renfro-Russell & Associates, Inc.
4000 Sandstone Highway, Suite 204, Sandstone, California 95070
TEL: (415) 461-2770

ED CREWSWELL
STRUCTURAL ENGINEER
1710 GALE STREET, FIVE FL.
BERKELEY, CALIFORNIA 94704
TEL: (415) 841-1100

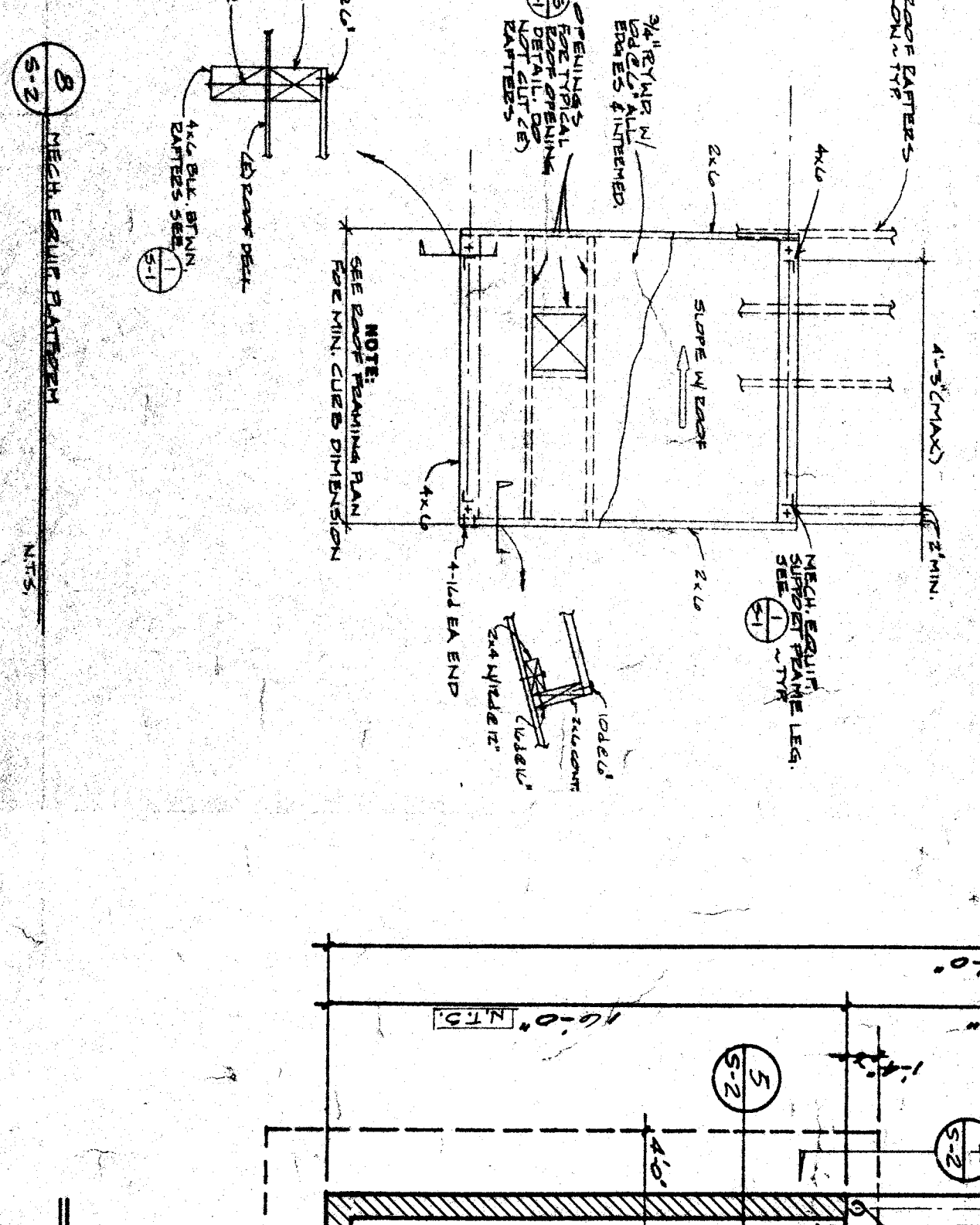
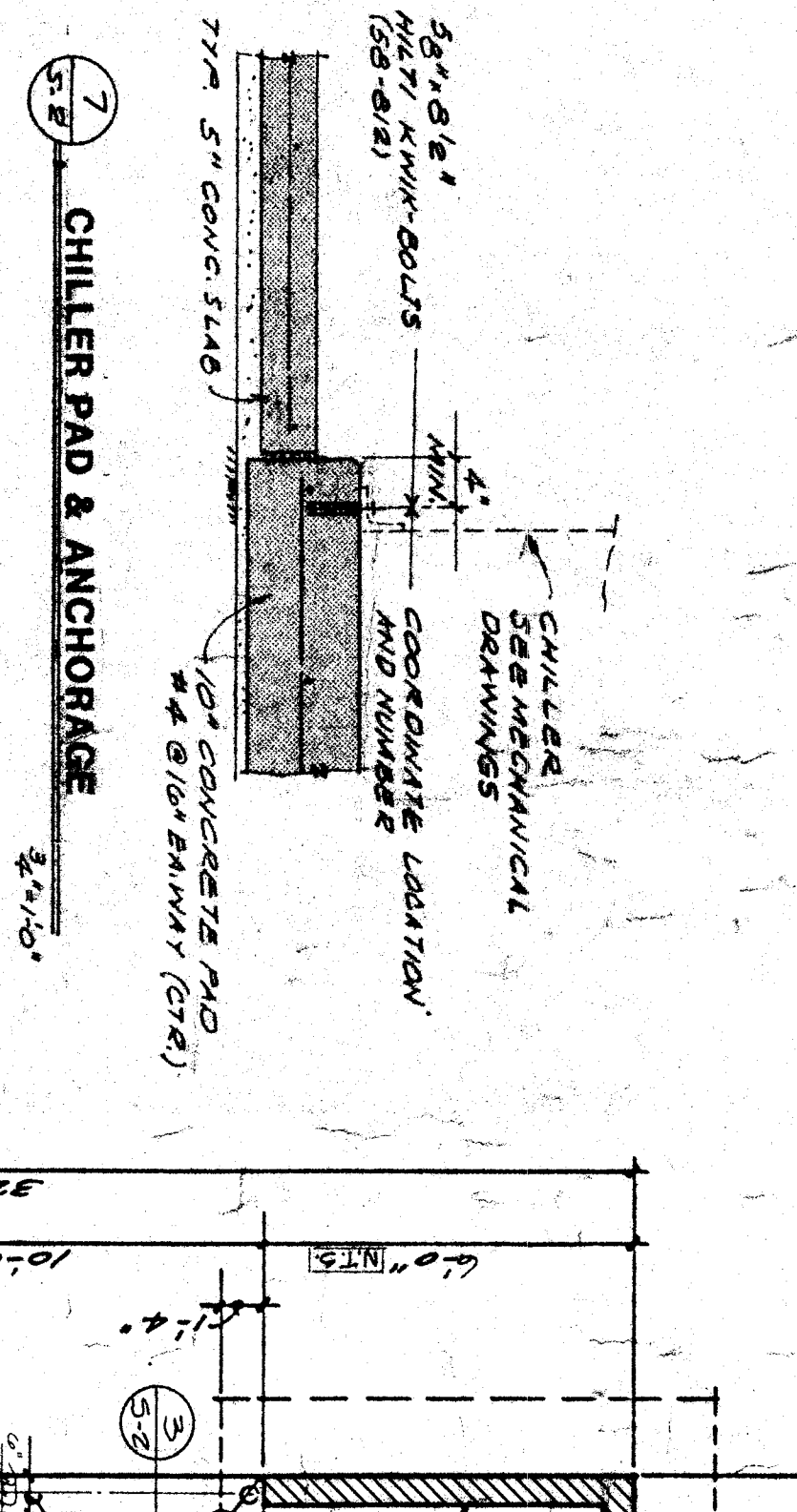
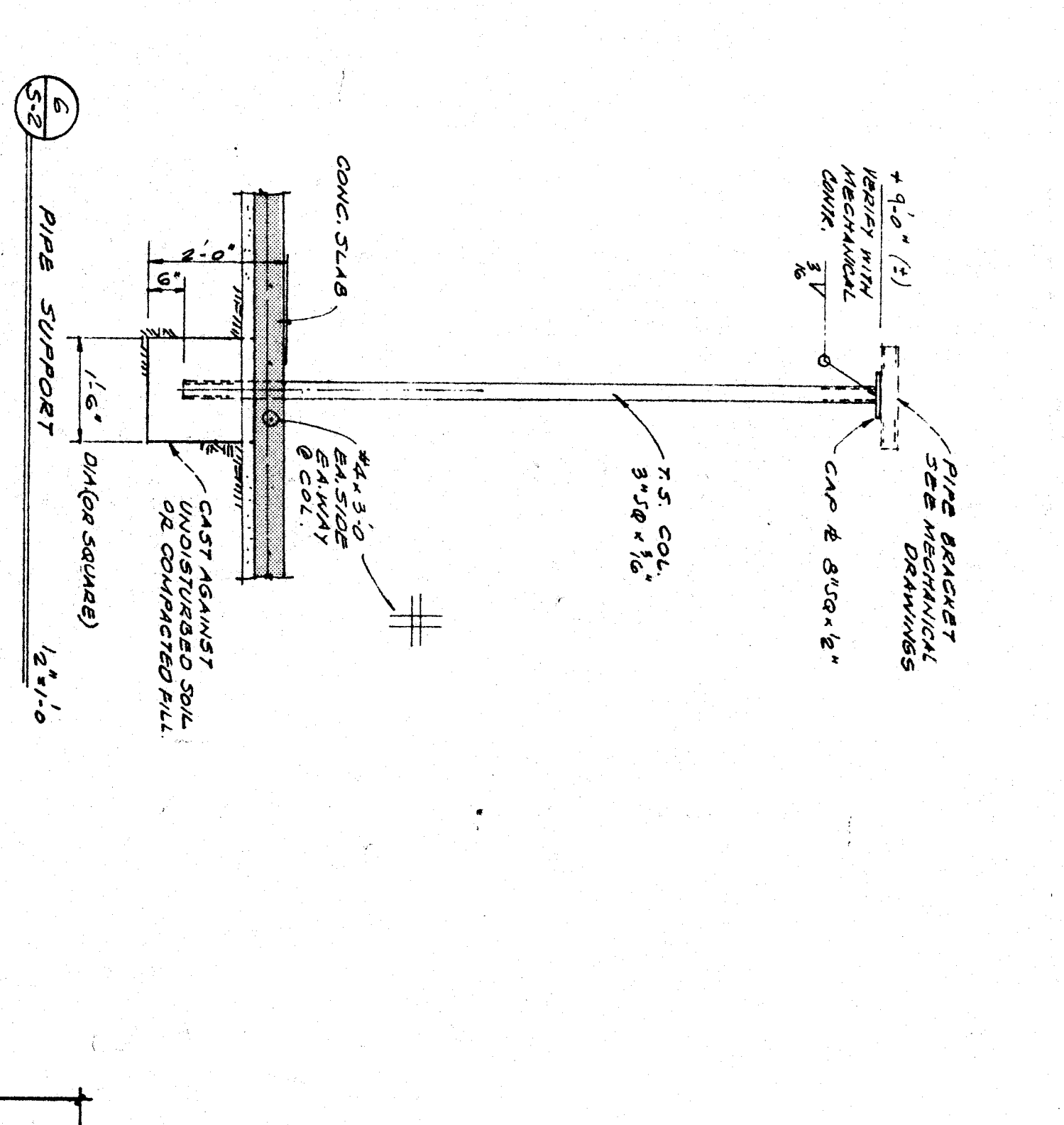
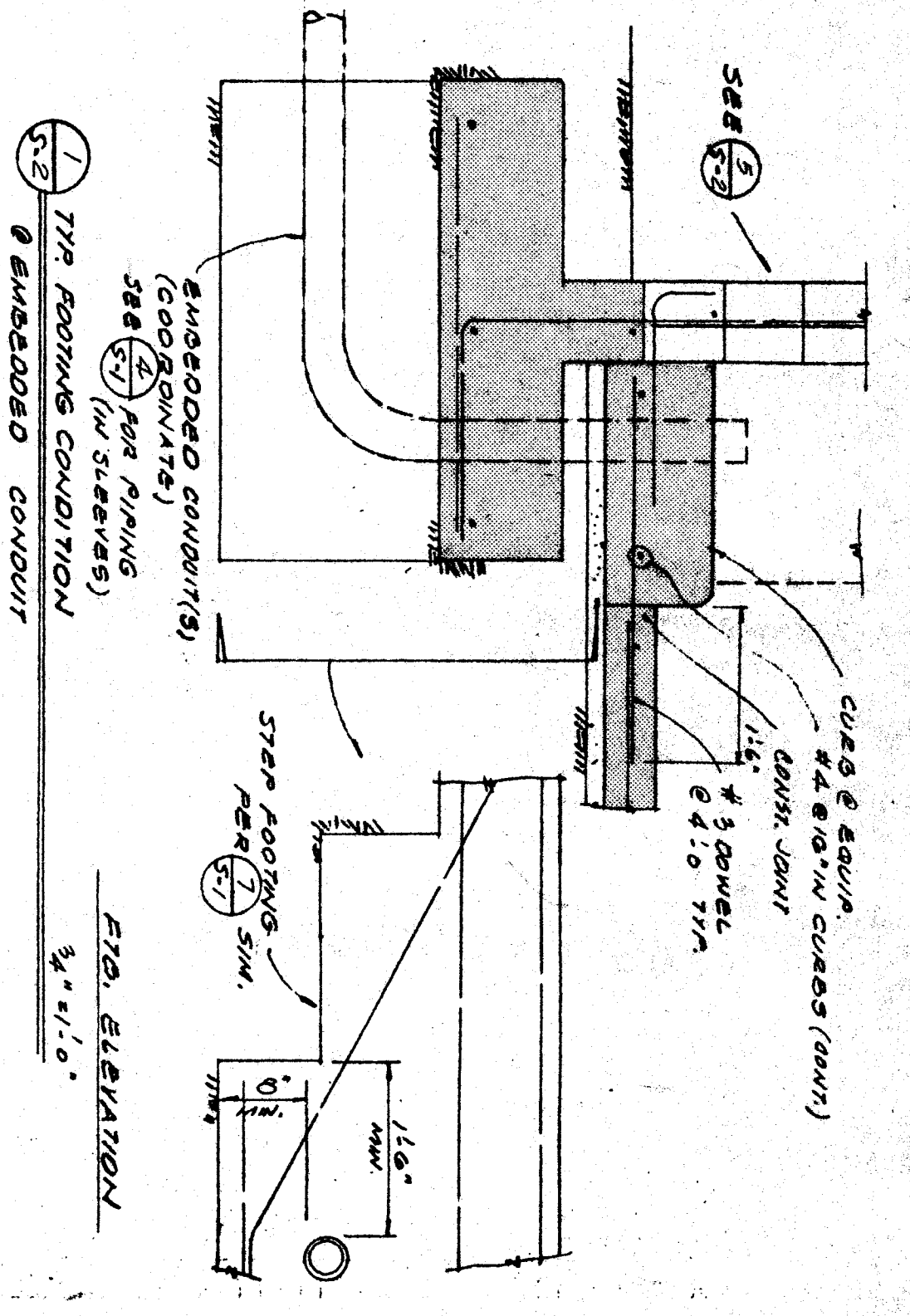
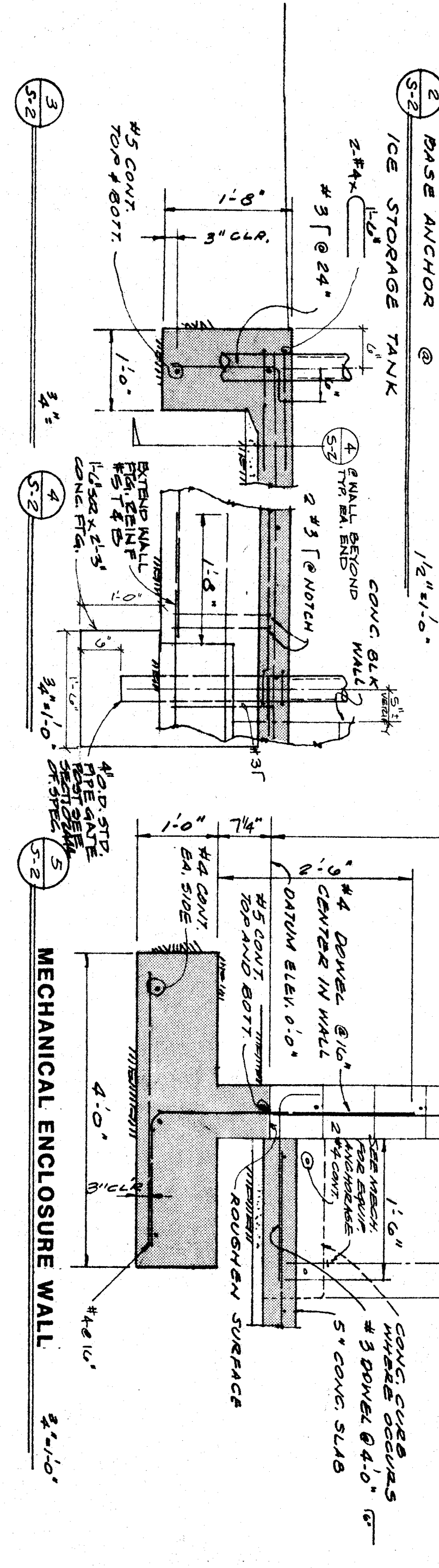
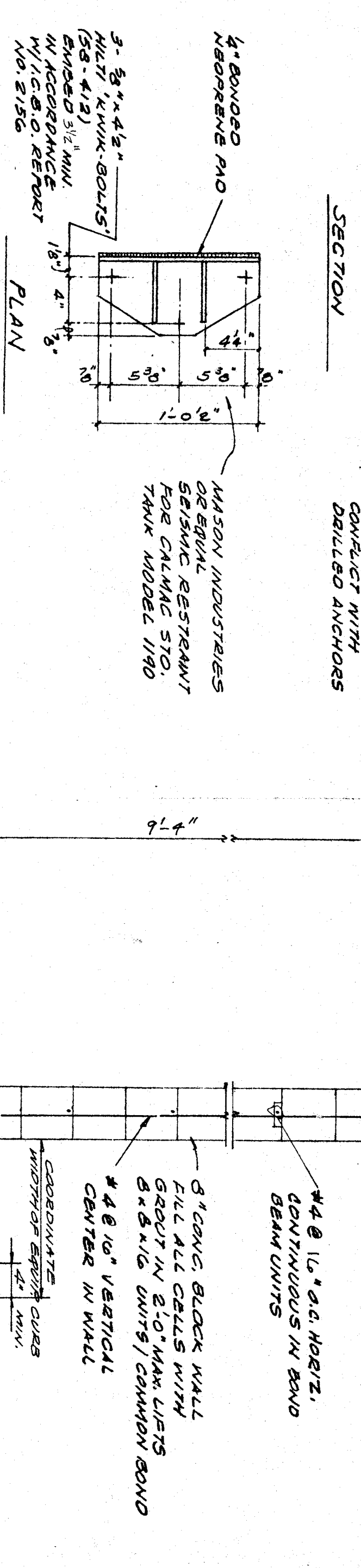
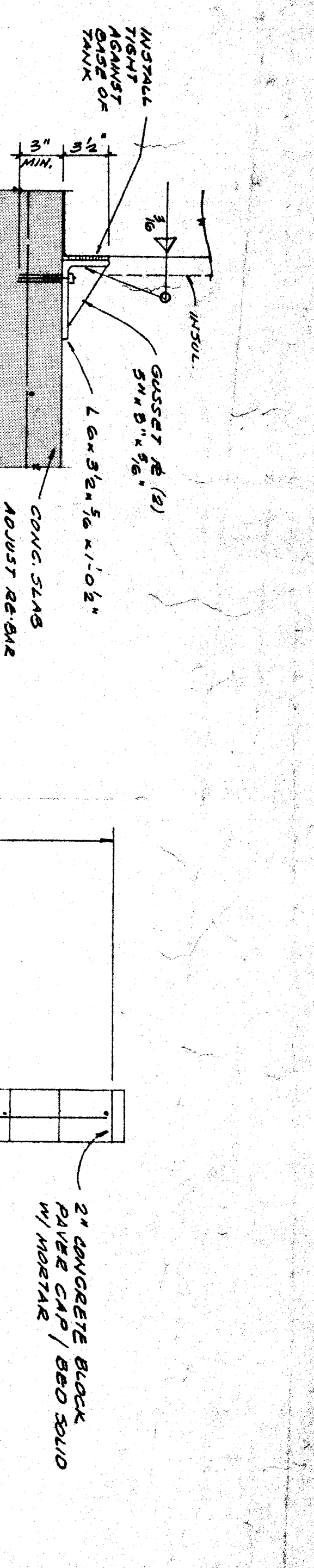
BAKERSFIELD CITY SCHOOL DISTRICT

FREMONT ELEMENTARY SCHOOL MODERNIZATION

MECHANICAL EQUIPMENT ENCLOSURE AND FOUNDATION PLAN 1/4" = 1'-0"



S-2



FOUNDATION PLAN NOTES

1. INDICATES ELEVATION ABOVE (+) OR DEPTH BELOW (-) OF FOOTING AND ELEVATION TO TOP OF CONCRETE UNLESS NOTED.

2. SEE SHEET S-1 FOR GENERAL NOTES AND TYPICAL DETAILS.

3. COORDINATE LOCATION AND SIZE OF MECH. & ELEC. EQUIP. FOR TYPICAL FOUNDATION NOTES & DETAILS.

4. SEE SITE GRADING PLAN (DRAWING C-1) FOR DATUM SLAB ELEVATION.

5. UNLESS SPECIFICALLY DIMENSIONED ABOVE.

6. CENTER FOOTINGS UNDER WALLS AND/OR COLUMNS.

7. EXPANSION JOINT.

8. CONSTRUCTION OR CONTROL JOINT.

9. INDICATES LOCATION OF CONTROL JOINT.

10. SEE SHEET S-1 FOR GENERAL NOTES AND TYPICAL DETAILS.

11. COORDINATE LOCATION AND SIZE OF MECH. & ELEC. EQUIP. FOR TYPICAL FOUNDATION NOTES & DETAILS.

MECHANICAL EQUIPMENT ENCLOSURE

APPROVED: ARCHITECT *Donald W. Renfro*

CHECKED: *Mark E. Russell*

DRAWN BY: *Carl G. Elert*

PROJECT NO. **BA-3388**

SHEET NUMBER **S-2**

DATE: 2-18-88 O.S.A. PLAN CHECK

DATE: 2-24-88 E.D.C.

DATE: 2-18-88 O.S.A. PLAN CHECK

DATE: 2-24-88 E.D.C.