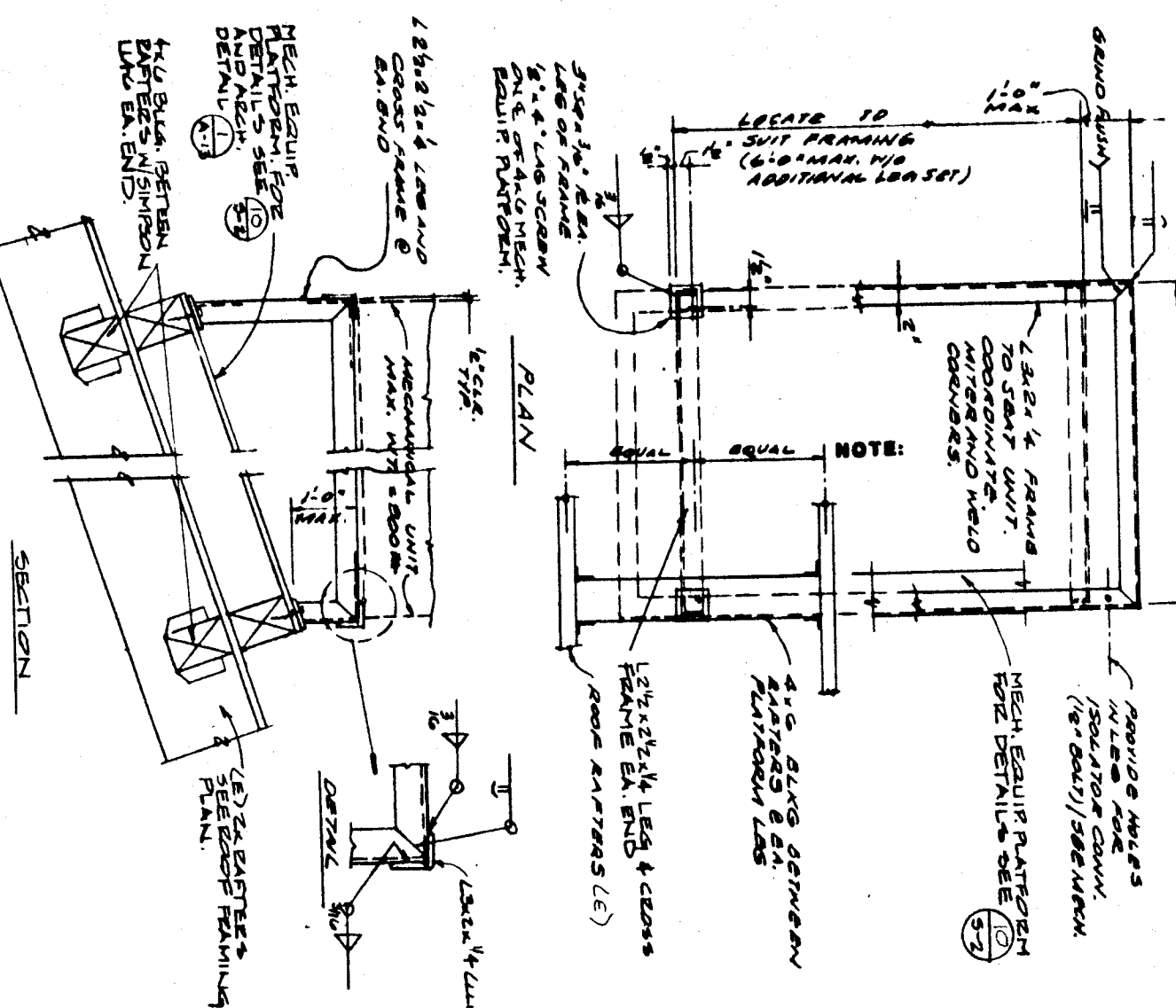
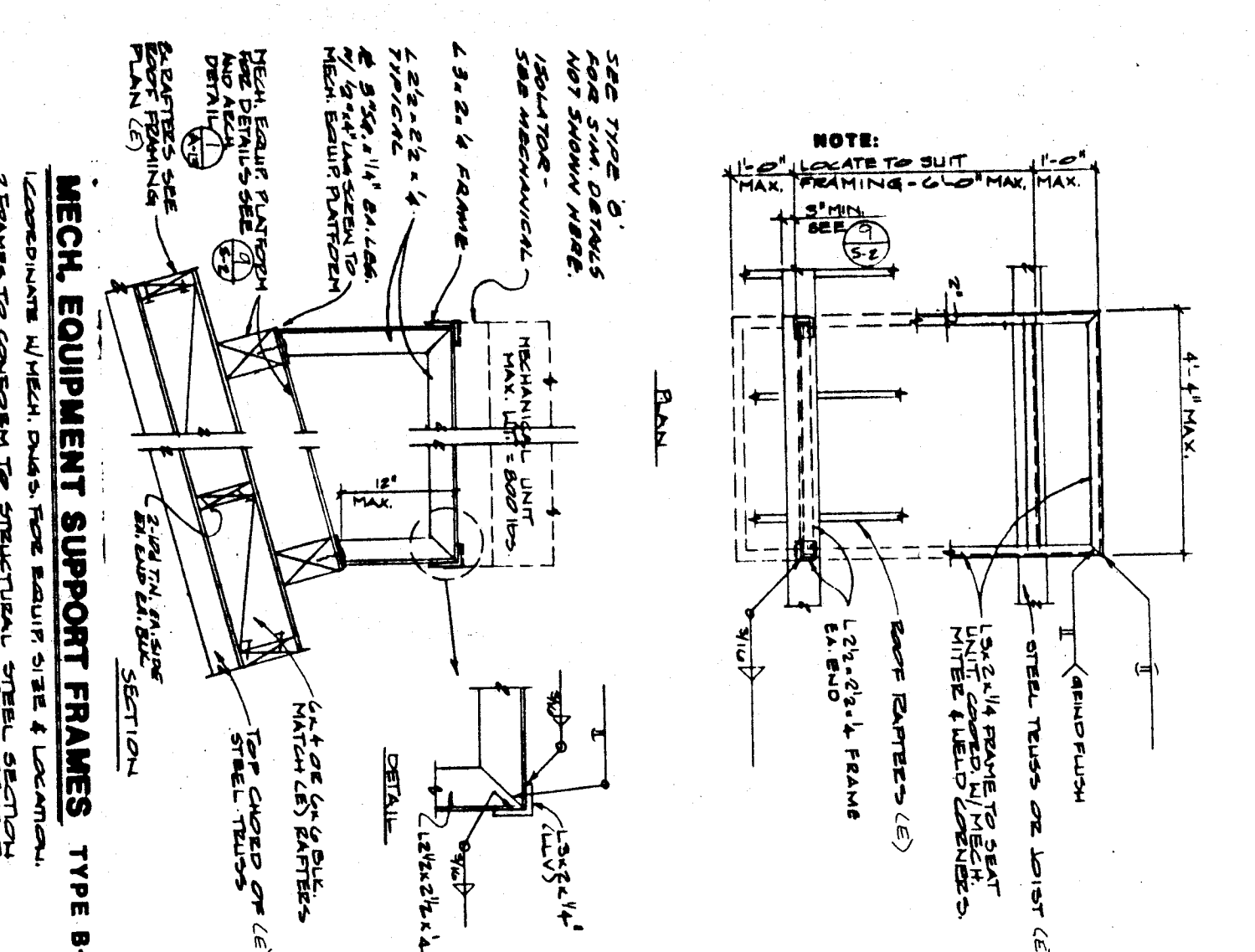


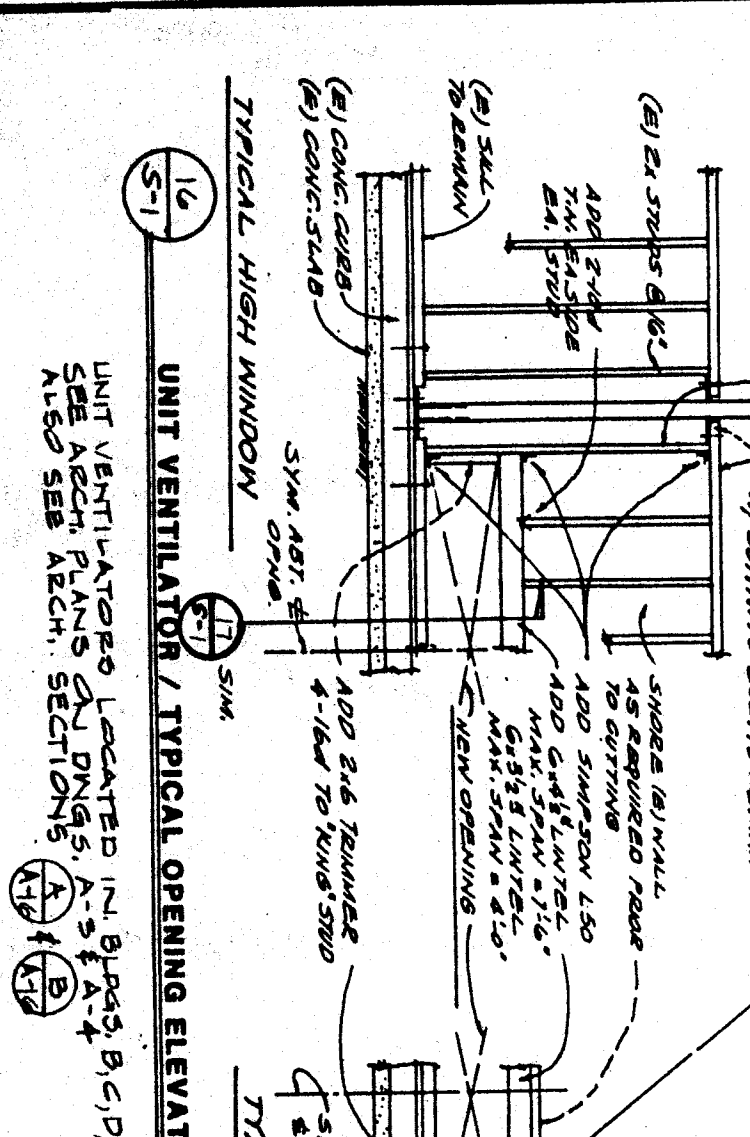
MECH. EQUIPMENT SUPPORT FRAMES TYPE A
 1. CONSTRUCTION OF THESE FRAMES SHALL BE IN ACCORDANCE WITH THE REQUIREMENTS OF THE SPECIFICATIONS FOR MECHANICAL EQUIPMENT SUPPORT FRAMES.



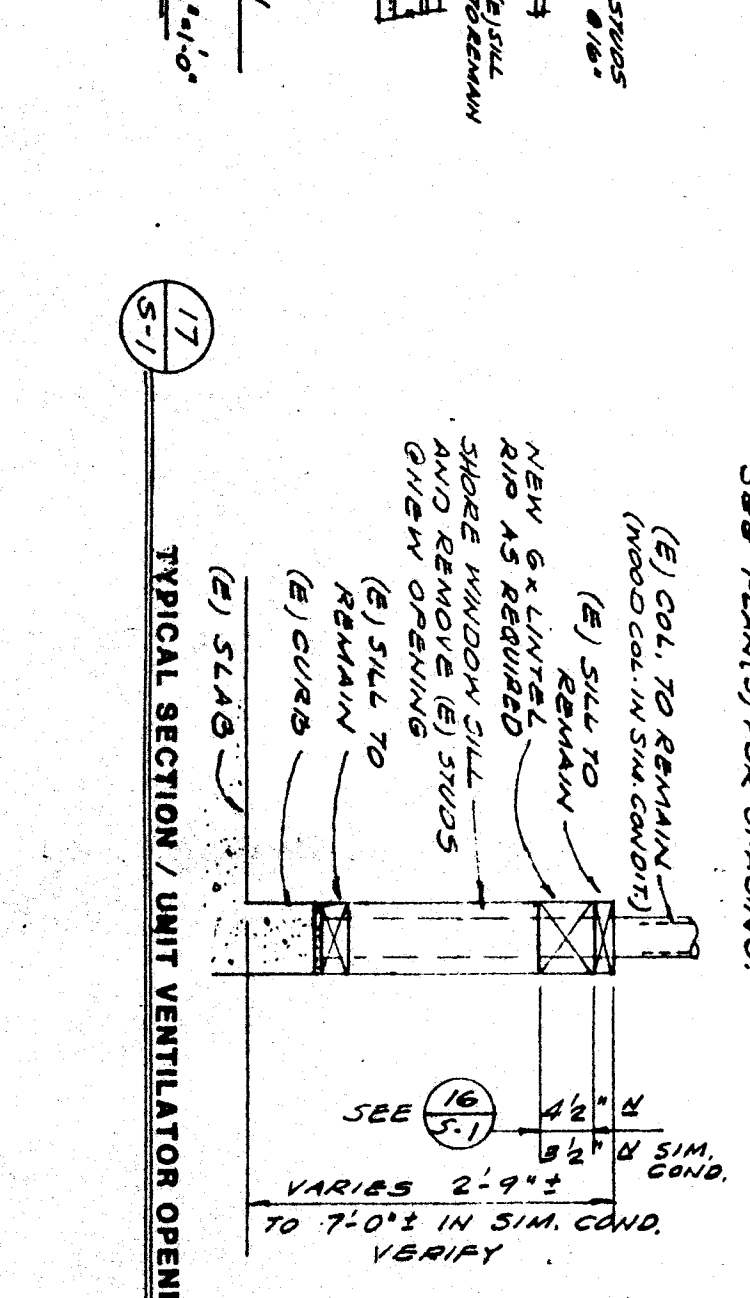
MECH. EQUIPMENT SUPPORT FRAMES TYPE B
 1. CONSTRUCTION OF THESE FRAMES SHALL BE IN ACCORDANCE WITH THE REQUIREMENTS OF THE SPECIFICATIONS FOR MECHANICAL EQUIPMENT SUPPORT FRAMES.



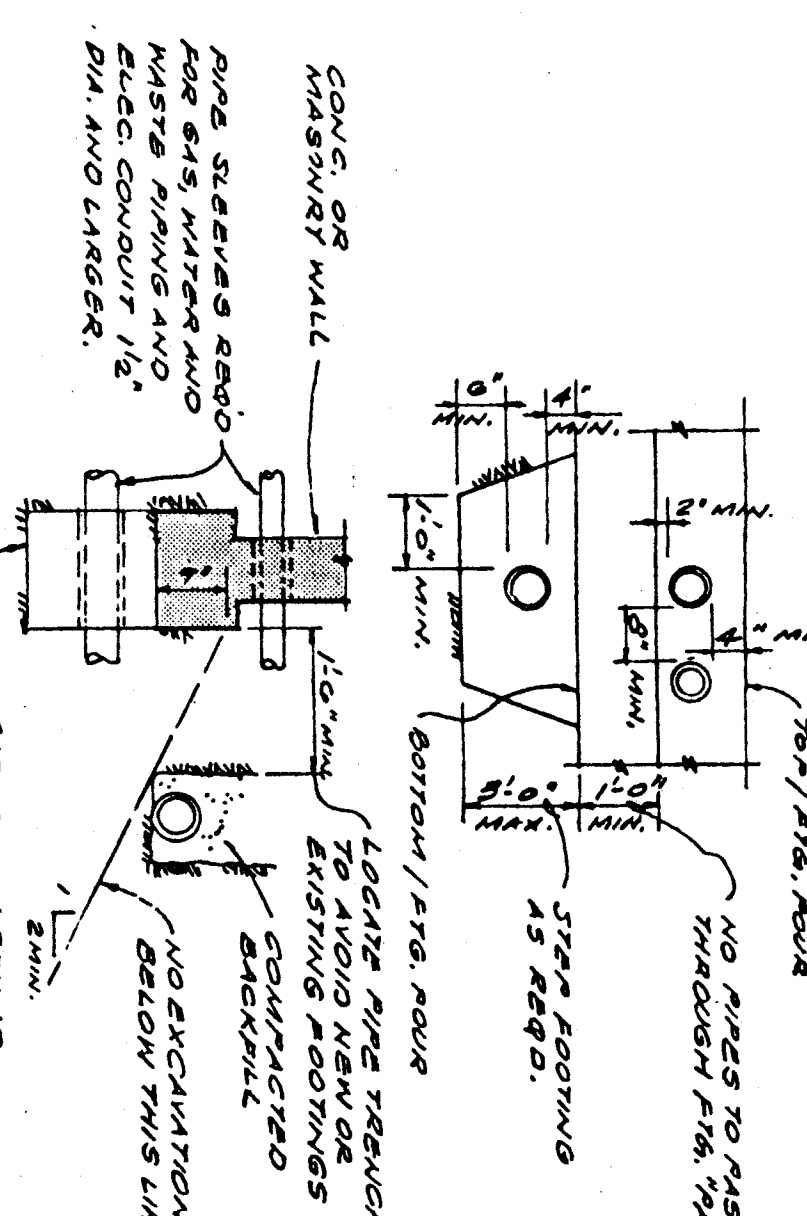
MECH. EQUIPMENT SUPPORT FRAMES TYPE B-1
 1. CONSTRUCTION OF THESE FRAMES SHALL BE IN ACCORDANCE WITH THE REQUIREMENTS OF THE SPECIFICATIONS FOR MECHANICAL EQUIPMENT SUPPORT FRAMES.



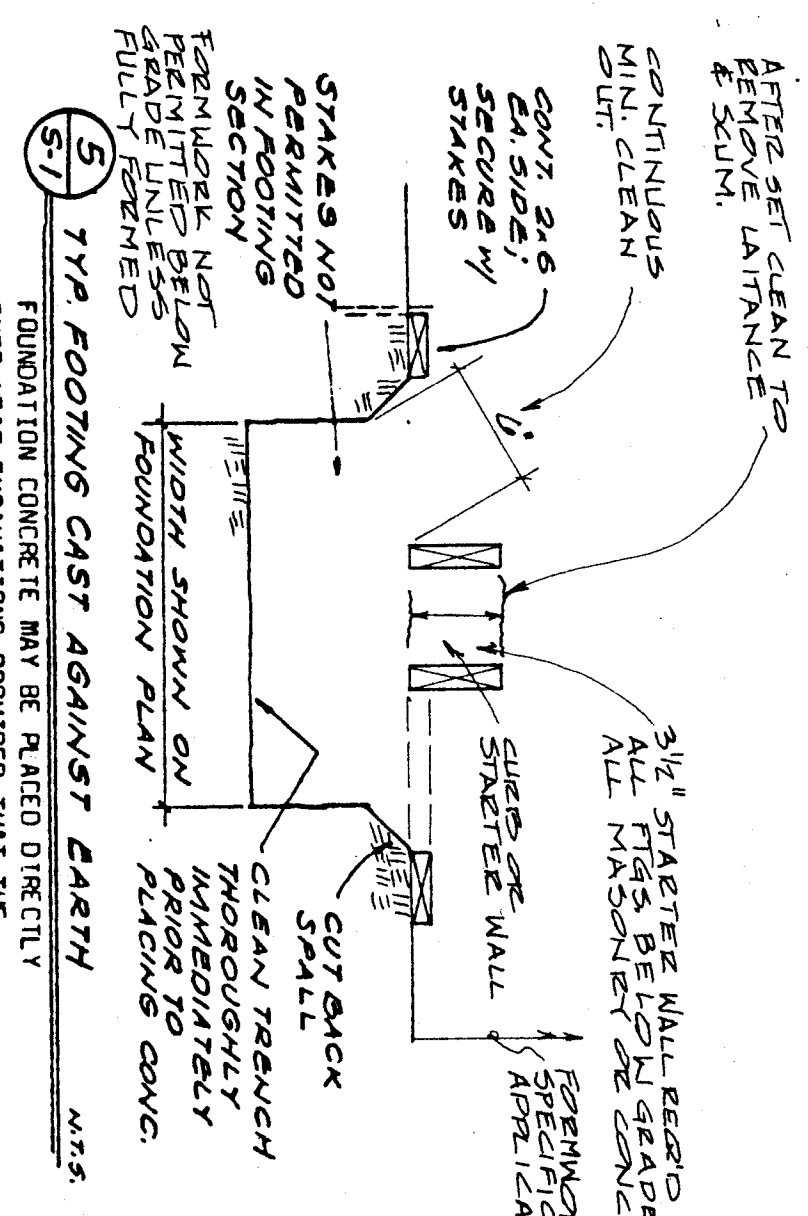
UNIT VENTILATOR, TYPICAL OPENING ELEVATION
 1. CONSTRUCTION OF THESE FRAMES SHALL BE IN ACCORDANCE WITH THE REQUIREMENTS OF THE SPECIFICATIONS FOR MECHANICAL EQUIPMENT SUPPORT FRAMES.



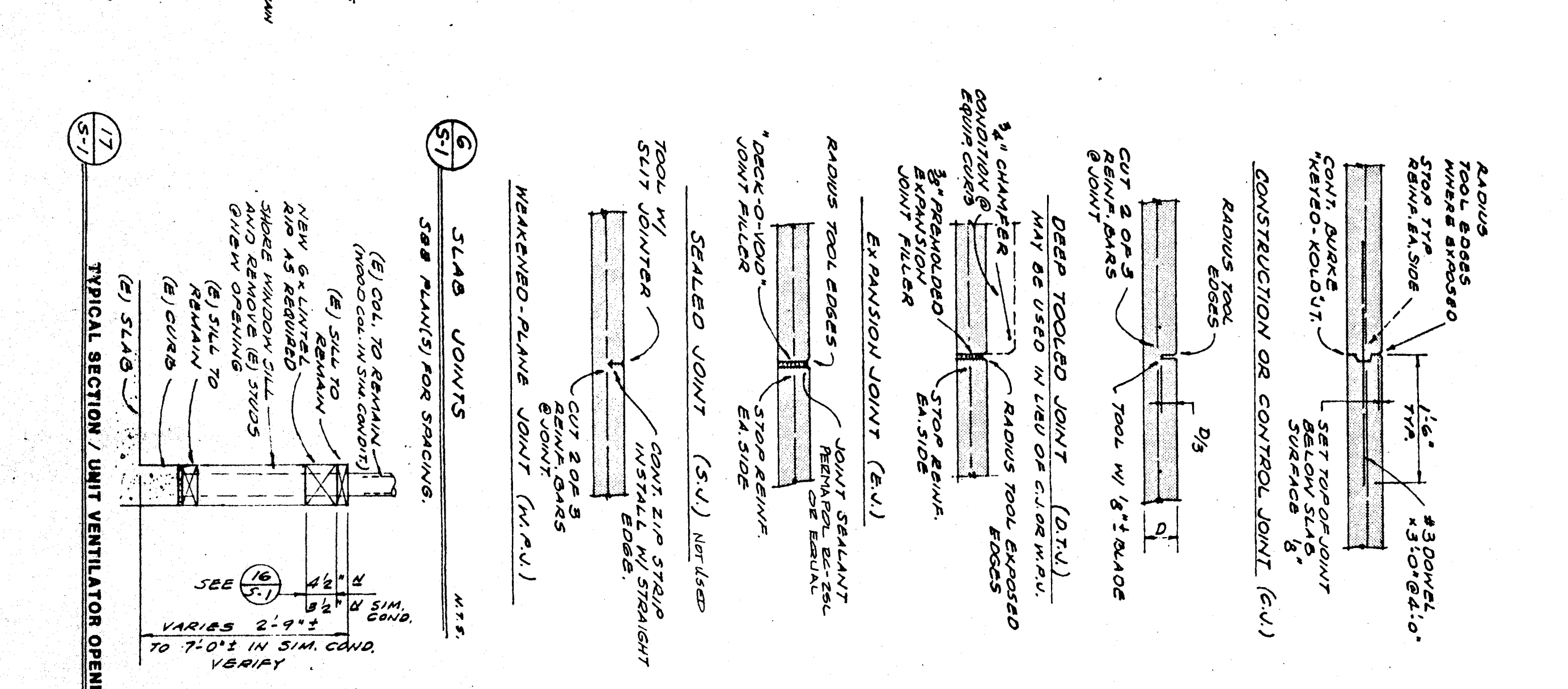
UNIT VENTILATOR, TYPICAL LOW WINDOW
 1. CONSTRUCTION OF THESE FRAMES SHALL BE IN ACCORDANCE WITH THE REQUIREMENTS OF THE SPECIFICATIONS FOR MECHANICAL EQUIPMENT SUPPORT FRAMES.



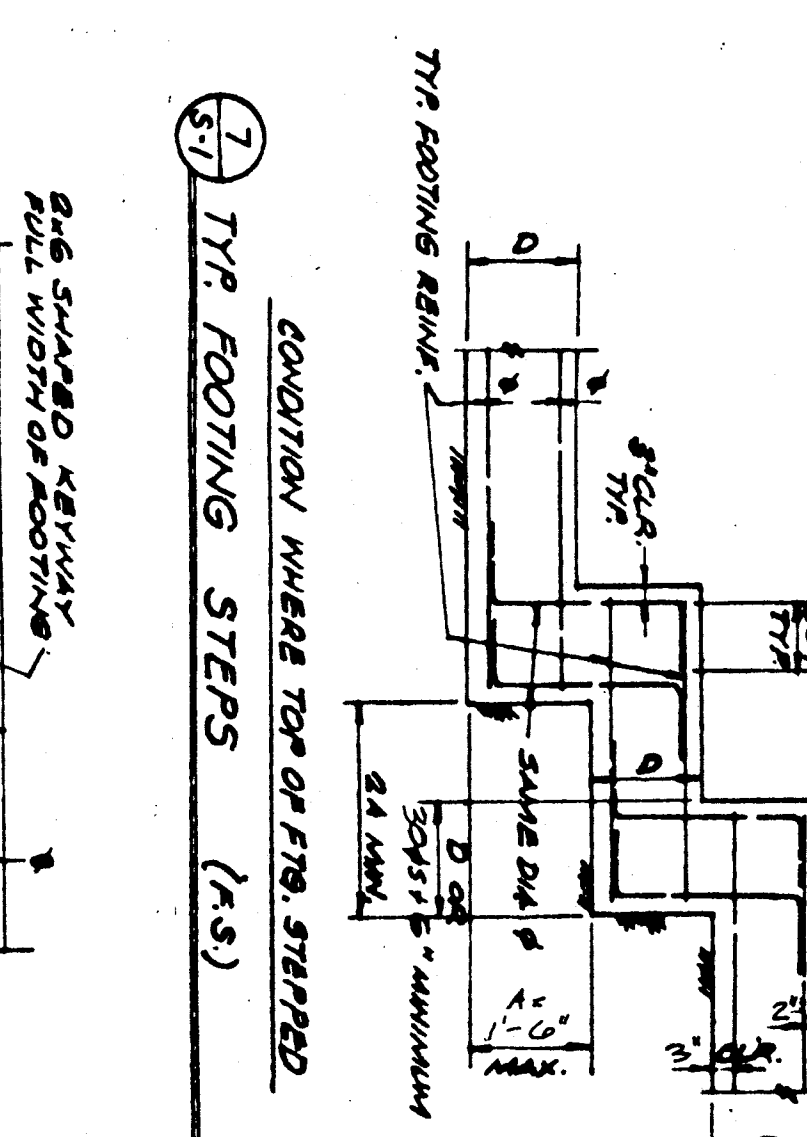
TYPICAL PIPE TRENCH/FOOTING DETAIL
 1. CONSTRUCTION OF THESE FRAMES SHALL BE IN ACCORDANCE WITH THE REQUIREMENTS OF THE SPECIFICATIONS FOR MECHANICAL EQUIPMENT SUPPORT FRAMES.



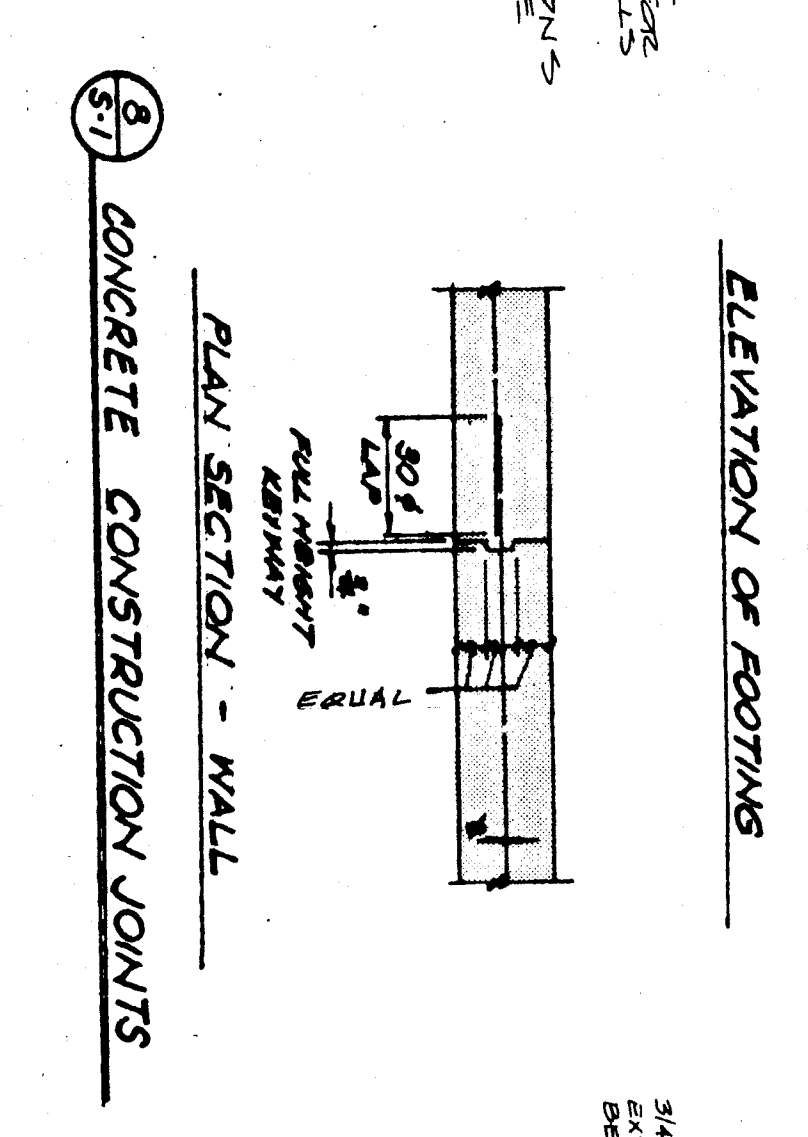
TYPICAL FOOTING CAST AGAINST EXISTING
 1. CONSTRUCTION OF THESE FRAMES SHALL BE IN ACCORDANCE WITH THE REQUIREMENTS OF THE SPECIFICATIONS FOR MECHANICAL EQUIPMENT SUPPORT FRAMES.



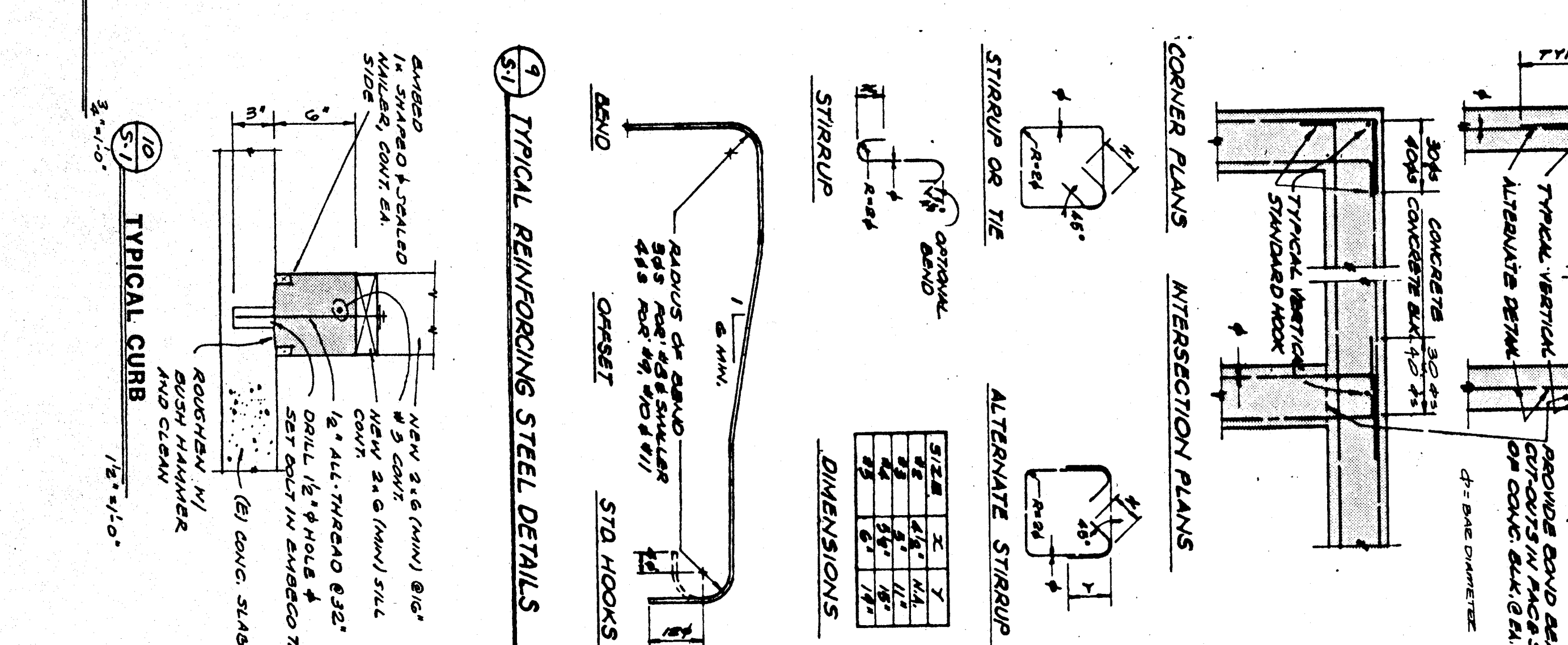
SLAB JOINTS
 1. CONSTRUCTION OF THESE FRAMES SHALL BE IN ACCORDANCE WITH THE REQUIREMENTS OF THE SPECIFICATIONS FOR MECHANICAL EQUIPMENT SUPPORT FRAMES.



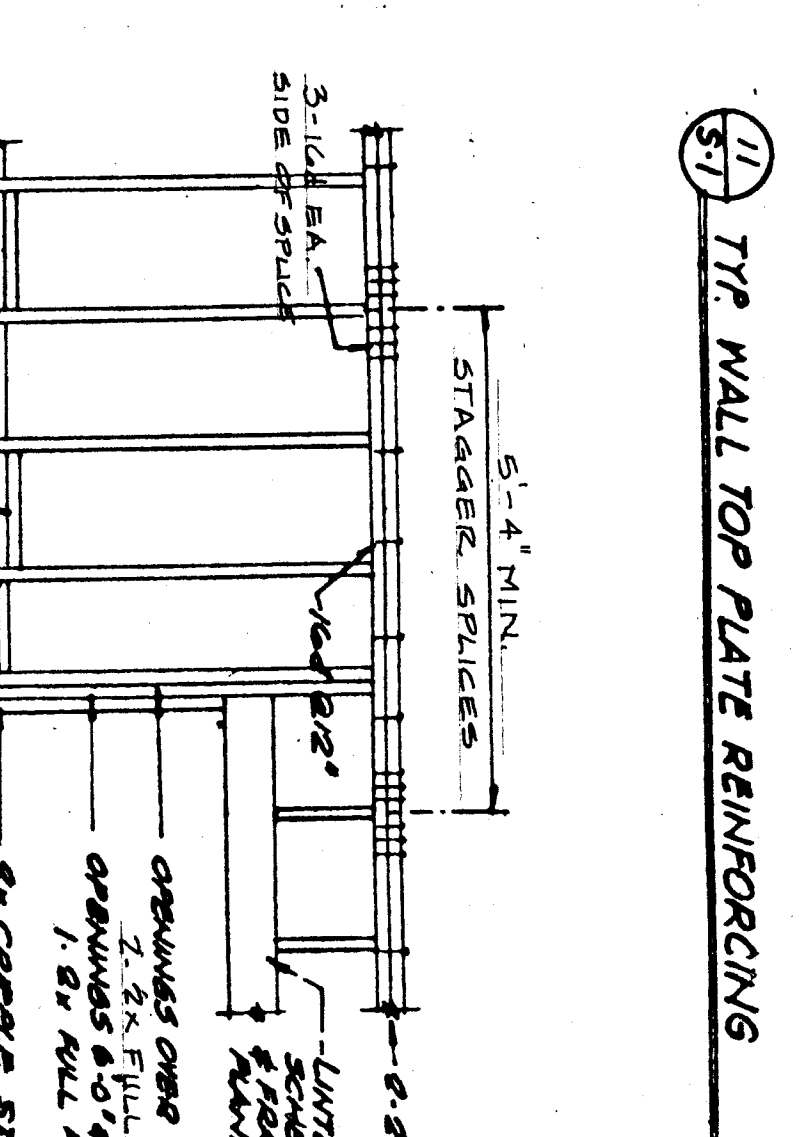
TYPICAL FOOTING STEPS (1 & 2)
 1. CONSTRUCTION OF THESE FRAMES SHALL BE IN ACCORDANCE WITH THE REQUIREMENTS OF THE SPECIFICATIONS FOR MECHANICAL EQUIPMENT SUPPORT FRAMES.



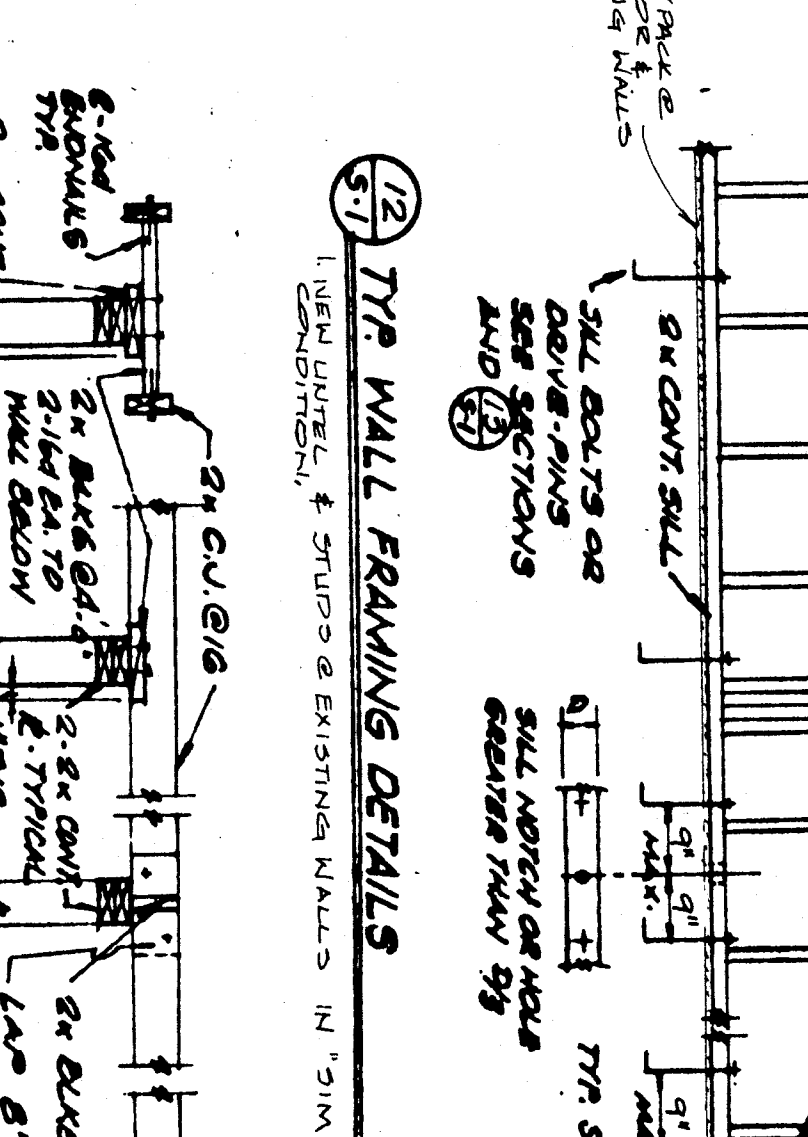
CONCRETE CONSTRUCTION JOINTS
 1. CONSTRUCTION OF THESE FRAMES SHALL BE IN ACCORDANCE WITH THE REQUIREMENTS OF THE SPECIFICATIONS FOR MECHANICAL EQUIPMENT SUPPORT FRAMES.



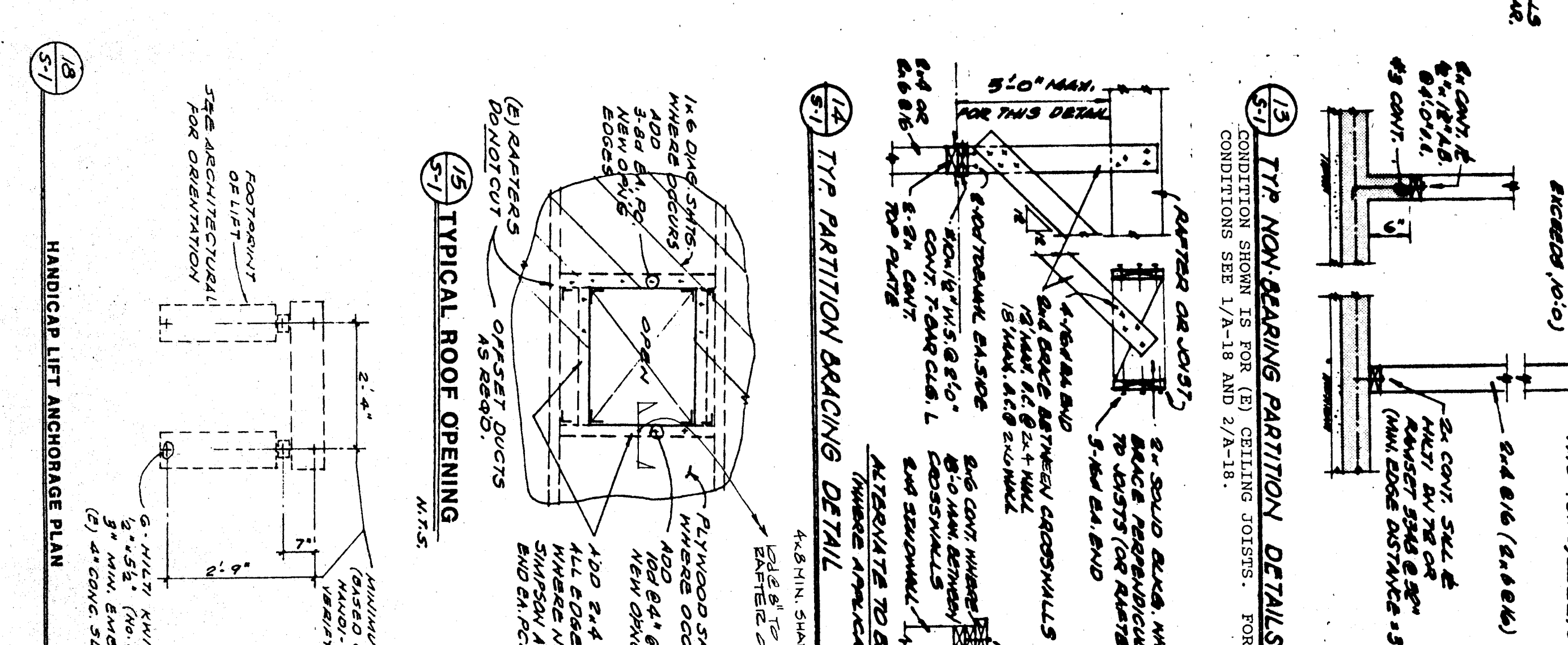
TYPICAL REINFORCING STEEL DETAILS
 1. CONSTRUCTION OF THESE FRAMES SHALL BE IN ACCORDANCE WITH THE REQUIREMENTS OF THE SPECIFICATIONS FOR MECHANICAL EQUIPMENT SUPPORT FRAMES.



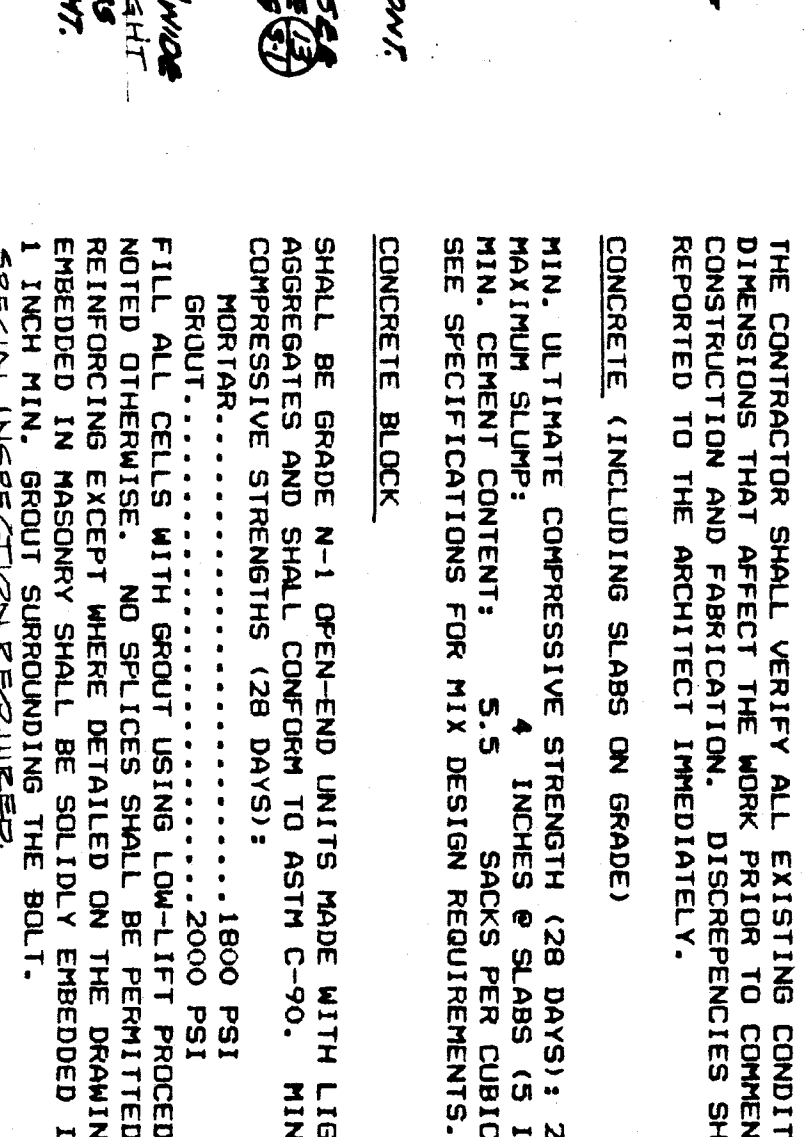
TYPICAL WALL TOP PLATE REINFORCING
 1. CONSTRUCTION OF THESE FRAMES SHALL BE IN ACCORDANCE WITH THE REQUIREMENTS OF THE SPECIFICATIONS FOR MECHANICAL EQUIPMENT SUPPORT FRAMES.



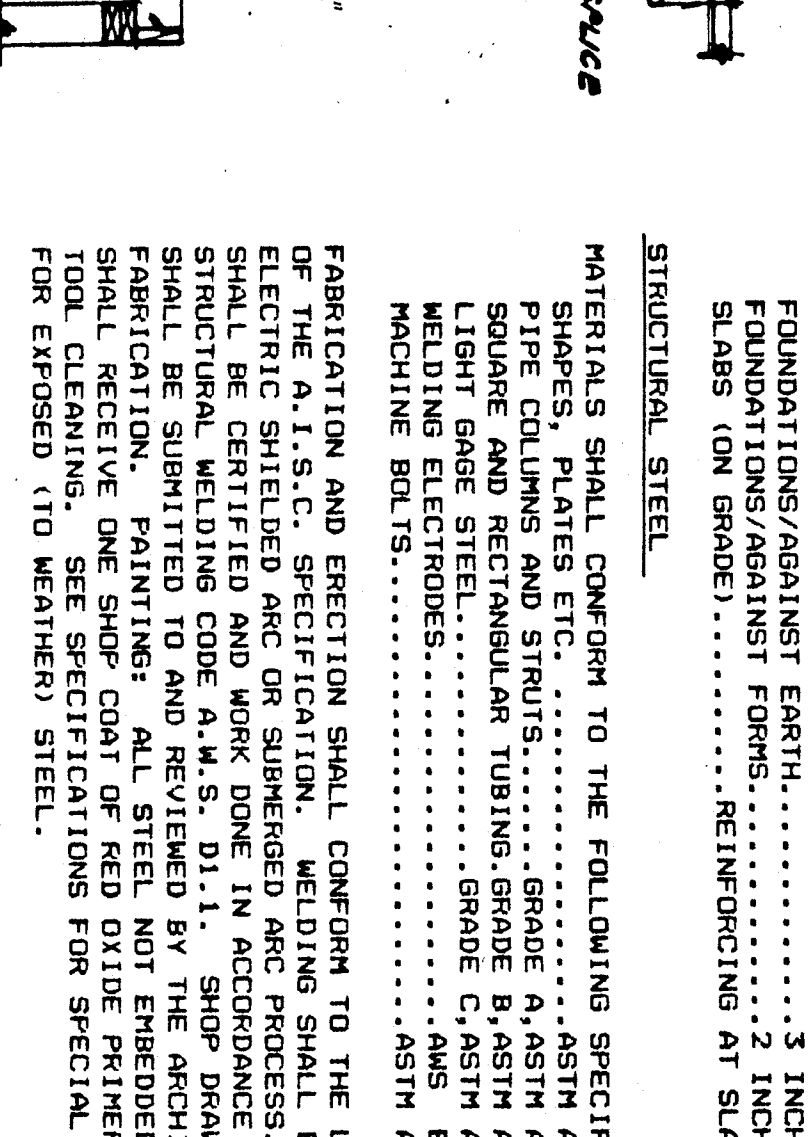
TYPICAL WALL FINISHING DETAILS
 1. CONSTRUCTION OF THESE FRAMES SHALL BE IN ACCORDANCE WITH THE REQUIREMENTS OF THE SPECIFICATIONS FOR MECHANICAL EQUIPMENT SUPPORT FRAMES.



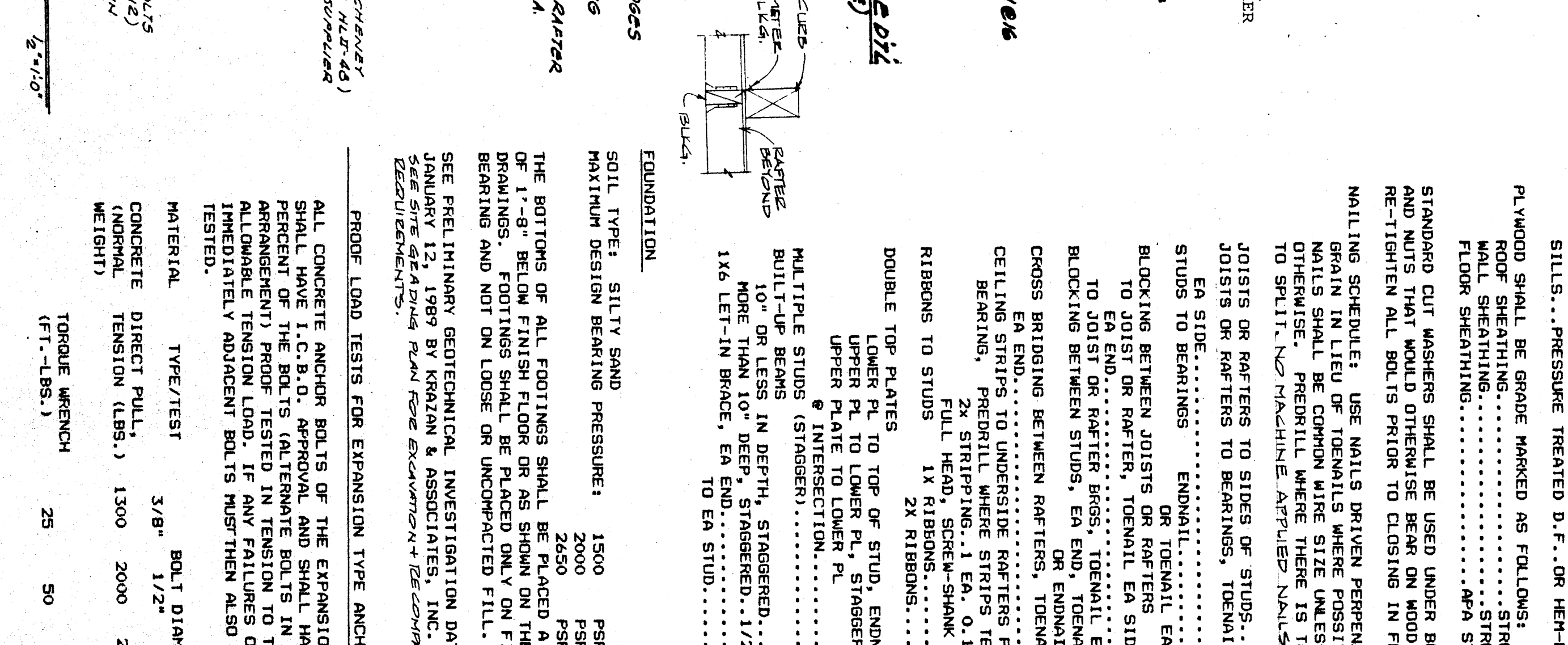
TYPICAL PARTITION BRACING DETAIL
 1. CONSTRUCTION OF THESE FRAMES SHALL BE IN ACCORDANCE WITH THE REQUIREMENTS OF THE SPECIFICATIONS FOR MECHANICAL EQUIPMENT SUPPORT FRAMES.



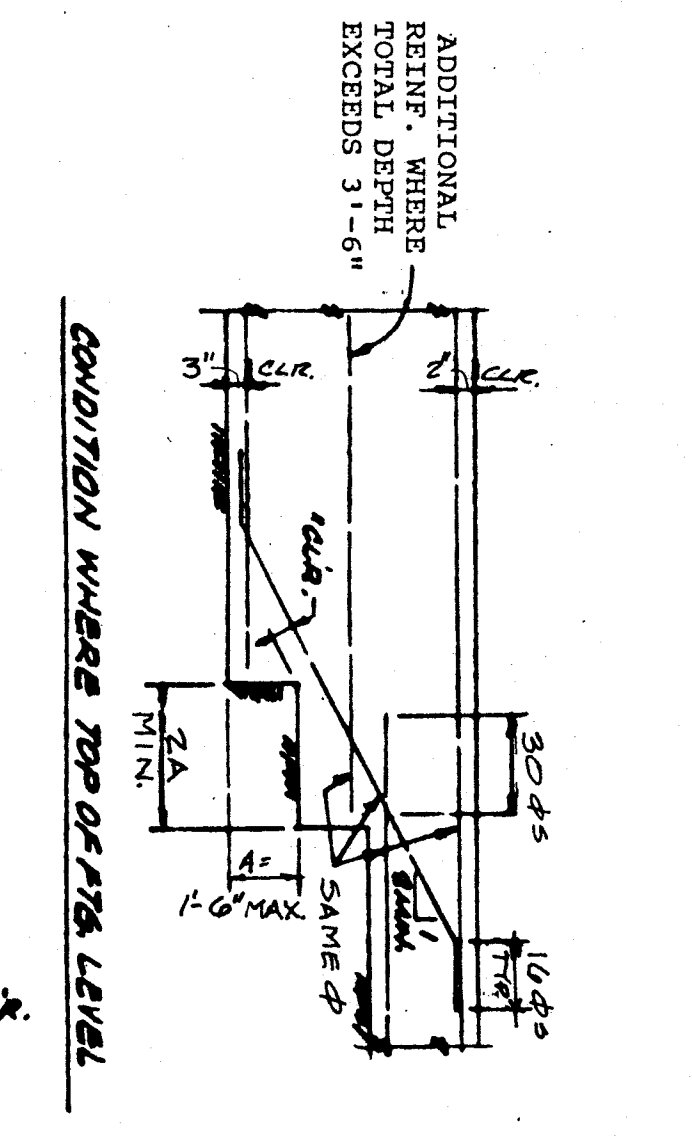
TYPICAL ROOF OPENING
 1. CONSTRUCTION OF THESE FRAMES SHALL BE IN ACCORDANCE WITH THE REQUIREMENTS OF THE SPECIFICATIONS FOR MECHANICAL EQUIPMENT SUPPORT FRAMES.



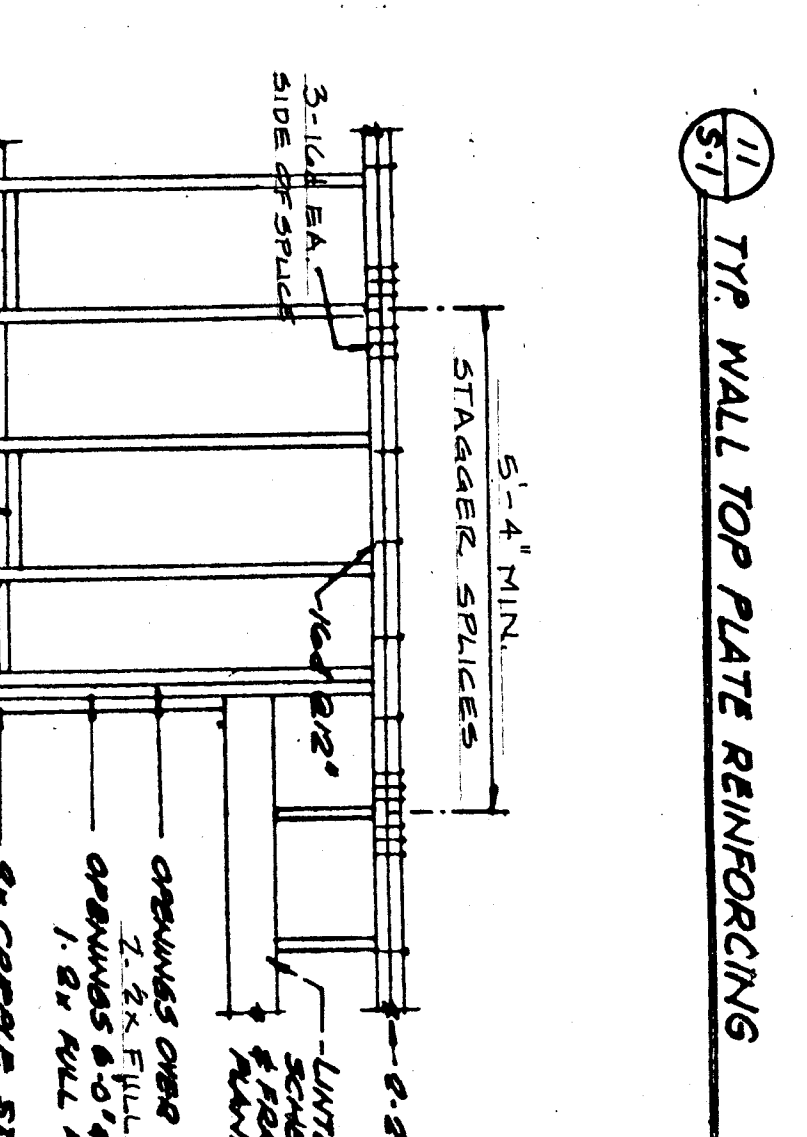
HANDICAP LIFT ANCHORAGE PLAN
 1. CONSTRUCTION OF THESE FRAMES SHALL BE IN ACCORDANCE WITH THE REQUIREMENTS OF THE SPECIFICATIONS FOR MECHANICAL EQUIPMENT SUPPORT FRAMES.



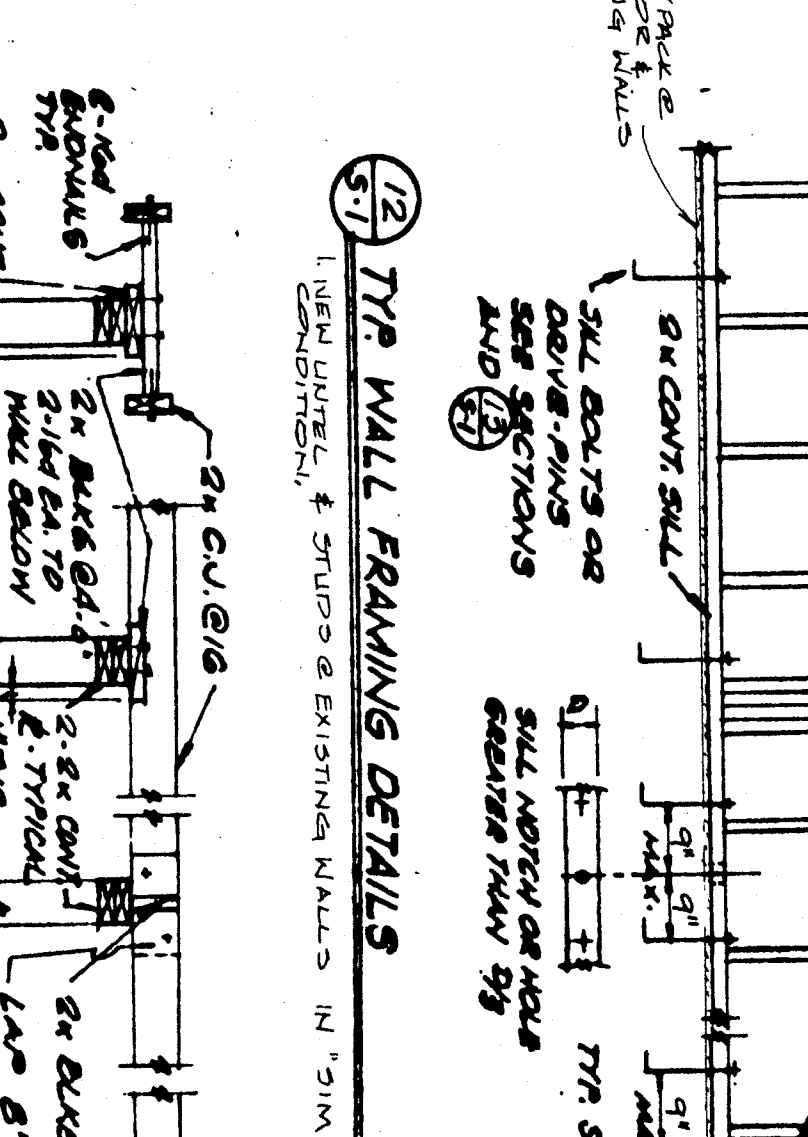
TYPICAL CURB
 1. CONSTRUCTION OF THESE FRAMES SHALL BE IN ACCORDANCE WITH THE REQUIREMENTS OF THE SPECIFICATIONS FOR MECHANICAL EQUIPMENT SUPPORT FRAMES.



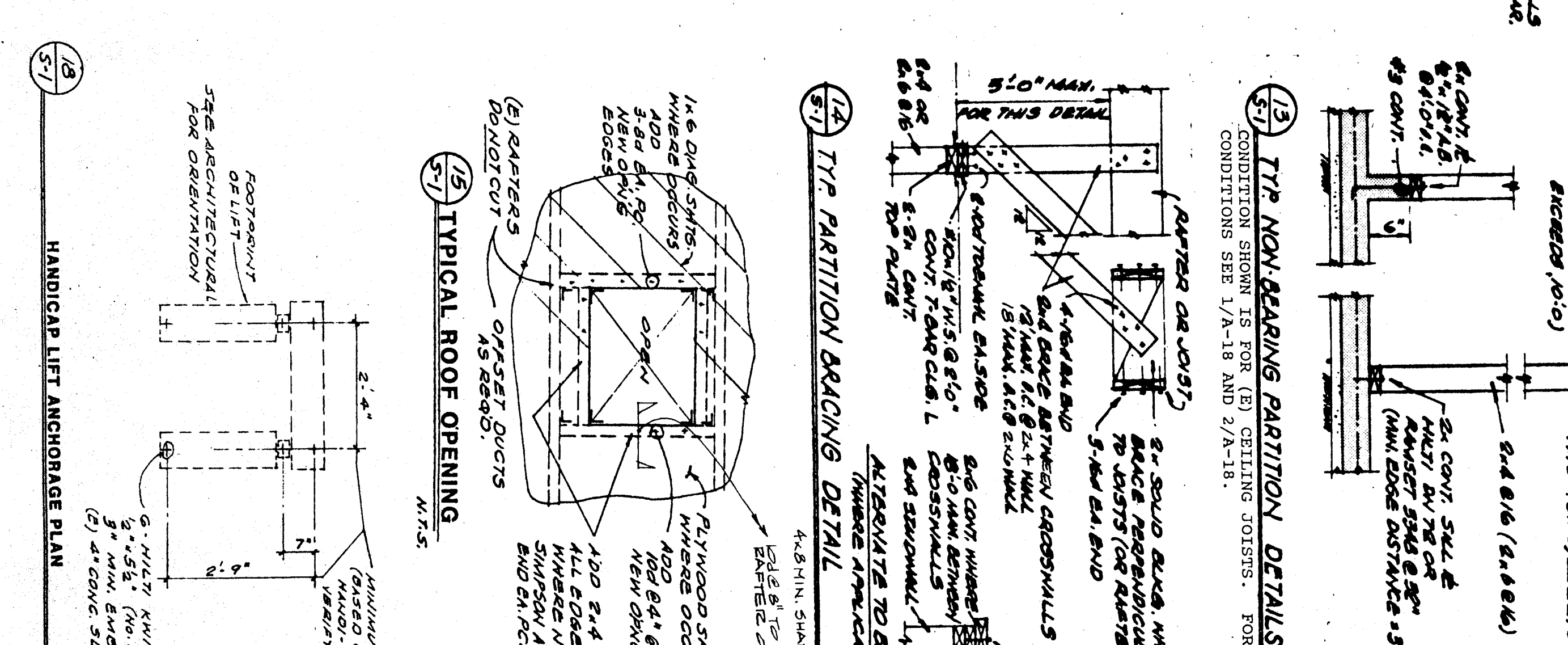
CONDITION WHERE TOP OF FIBER LEVEL
 1. CONSTRUCTION OF THESE FRAMES SHALL BE IN ACCORDANCE WITH THE REQUIREMENTS OF THE SPECIFICATIONS FOR MECHANICAL EQUIPMENT SUPPORT FRAMES.



CONDITION WHERE TOP OF FIBER LEVEL
 1. CONSTRUCTION OF THESE FRAMES SHALL BE IN ACCORDANCE WITH THE REQUIREMENTS OF THE SPECIFICATIONS FOR MECHANICAL EQUIPMENT SUPPORT FRAMES.



CORNER PLANS INTERSECTION PLANS
 1. CONSTRUCTION OF THESE FRAMES SHALL BE IN ACCORDANCE WITH THE REQUIREMENTS OF THE SPECIFICATIONS FOR MECHANICAL EQUIPMENT SUPPORT FRAMES.



CORNER PLANS INTERSECTION PLANS
 1. CONSTRUCTION OF THESE FRAMES SHALL BE IN ACCORDANCE WITH THE REQUIREMENTS OF THE SPECIFICATIONS FOR MECHANICAL EQUIPMENT SUPPORT FRAMES.

GENERAL NOTES

1. ALL CONSTRUCTION SHALL BE IN ACCORDANCE WITH THE REQUIREMENTS OF THE SPECIFICATIONS FOR MECHANICAL EQUIPMENT SUPPORT FRAMES.

2. THE CONTRACTOR SHALL VERIFY ALL EXISTING CONDITIONS AND DIMENSIONS PRIOR TO COMMENCEMENT OF CONSTRUCTION AND FABRICATION. DISCREPANCIES SHALL BE REPORTED TO THE ARCHITECT IMMEDIATELY.

3. CONCRETE (INCLUDING SLABS ON GRADE) SHALL BE GRADE N-1 OPEN-END UNITS MADE WITH LIGHT-WEIGHT AGGREGATES AND SHALL CONFORM TO ASTM C-90. MINIMUM COMPRESSIVE STRENGTH (28 DAYS) IS 2000 PSI.

4. ALL WALL CELLS WITH GROUT USING LOW-LIFT PROCEDURE UNLESS OTHERWISE SPECIFIED SHALL BE FILL WITH GROUT. MINIMUM GROUT STRENGTH SHALL BE 2000 PSI.

5. ALL REINFORCING SHALL BE EMBEDDED IN CONCRETE WITH 1 INCH MIN. GROUT SURROUNDING THE BOLT.

6. ALL REINFORCING SHALL BE DEFORMED BARS CONFORMING TO ASTM A618, GRADE 60 FOR CONCRETE. CONCRETE SHALL BE 40 BAR DIAMETERS.

7. CONCRETE COVERAGE FOR REINFORCEMENT SHALL BE 3 INCHES CLEAR FOR FOUNDATIONS/ANCHOR BOLTS AND 2 INCHES CLEAR FOR SLABS ON GRADE.

8. REINFORCING AT SLAB CENTER SHALL BE CERTIFIED AND WORK DONE IN ACCORDANCE WITH THE STRUCTURAL WELDING CODE A.S.T.M. D-1.1. SHOP DRAWINGS (IF ANY) SHALL BE SUBMITTED AND APPROVED PRIOR TO CONSTRUCTION. ALL STEEL SHALL RECEIVE ONE SHOP COAT OF RED OXIDE PRIMER, AFTER POWER TOOL CLEANING. SEE SPECIFICATIONS FOR SPECIAL REQUIREMENTS FOR EMBEDDED (10 WENTEN) STEEL.

9. FABRICATION AND ERECTION SHALL CONFORM TO THE LATEST EDITION OF THE AISC SPECIFICATION FOR STRUCTURAL STEEL CONNECTIONS AND THE AISC CODE OF PRACTICE FOR STRUCTURAL STEEL CONNECTIONS.

10. ALL WELDS SHALL BE MADE BY WELDERS WHOSE QUALIFICATIONS SHALL BE CERTIFIED AND WORK DONE IN ACCORDANCE WITH THE STRUCTURAL WELDING CODE A.S.T.M. D-1.1. SHOP DRAWINGS (IF ANY) SHALL BE SUBMITTED AND APPROVED PRIOR TO CONSTRUCTION.

11. ALL WELDS SHALL BE MADE BY WELDERS WHOSE QUALIFICATIONS SHALL BE CERTIFIED AND WORK DONE IN ACCORDANCE WITH THE STRUCTURAL WELDING CODE A.S.T.M. D-1.1. SHOP DRAWINGS (IF ANY) SHALL BE SUBMITTED AND APPROVED PRIOR TO CONSTRUCTION.

12. ALL WELDS SHALL BE MADE BY WELDERS WHOSE QUALIFICATIONS SHALL BE CERTIFIED AND WORK DONE IN ACCORDANCE WITH THE STRUCTURAL WELDING CODE A.S.T.M. D-1.1. SHOP DRAWINGS (IF ANY) SHALL BE SUBMITTED AND APPROVED PRIOR TO CONSTRUCTION.

13. ALL WELDS SHALL BE MADE BY WELDERS WHOSE QUALIFICATIONS SHALL BE CERTIFIED AND WORK DONE IN ACCORDANCE WITH THE STRUCTURAL WELDING CODE A.S.T.M. D-1.1. SHOP DRAWINGS (IF ANY) SHALL BE SUBMITTED AND APPROVED PRIOR TO CONSTRUCTION.

14. ALL WELDS SHALL BE MADE BY WELDERS WHOSE QUALIFICATIONS SHALL BE CERTIFIED AND WORK DONE IN ACCORDANCE WITH THE STRUCTURAL WELDING CODE A.S.T.M. D-1.1. SHOP DRAWINGS (IF ANY) SHALL BE SUBMITTED AND APPROVED PRIOR TO CONSTRUCTION.

15. ALL WELDS SHALL BE MADE BY WELDERS WHOSE QUALIFICATIONS SHALL BE CERTIFIED AND WORK DONE IN ACCORDANCE WITH THE STRUCTURAL WELDING CODE A.S.T.M. D-1.1. SHOP DRAWINGS (IF ANY) SHALL BE SUBMITTED AND APPROVED PRIOR TO CONSTRUCTION.

RENPRO RUSSELL & ASSOCIATES

Architects • Engineers • Interior Design/Design Planning

13899
 4455 0 x 0210
 Donald W. Renfro, AIA
 Mark E. Russell, AIA
 4400 Rockwood Highway, Suite 200, Rockwood, Ontario L3R 9P7, 705-561-1133
 C583
 C1378

ED CRENSWELL
 STRUCTURAL ENGINEER
 1100 EAST STREET, SUITE 211
 BAKERSFIELD, CALIFORNIA 93301
 (805) 334-0200
 Ed Crenswell

BAKERSFIELD CITY SCHOOL DISTRICT

FREMONT ELEMENTARY SCHOOL MODERNIZATION

PROJECT

KEY PLAN

BAKERSFIELD CITY SCHOOL DISTRICT BOARD OF EDUCATION

DATE: 2-10-89
 O.S.A. PLAN CHECK: [Signature]
 DATE: 2-21-89
 APPROVED: [Signature]

GENERAL NOTES AND TYPICAL DETAILS

APPROVED ARCHITECT: [Signature]
 CHECKED BY: [Signature]
 DRAWN BY: [Signature]
 SHEET NUMBER: S-1
 OF 3 SHEETS