

EXHAUST FAN SCHEDULE

| MARK | MFR & MODEL | HP | VOLT | PHASE | CFM | S.P. | MAX RPM | DRIVE | REMARKS | WT |
|------|-------------------|------|------|-------|------|------|---------|--------------|--|------|
| A | GREENHECK 6BIB-5 | 1/2 | 120 | 1 | 3200 | 1/4" | 900 | BELT DRIVE | ROOF MOUNTED FAN, 700 SPEED FLOOR GREENHECK STANDARD | 100* |
| B | GREENHECK 5M-15-6 | 1/50 | 120 | 1 | 295 | 1/4" | 1300 | DIRECT DRIVE | WALL MOUNT FAN FACTORY MOUNTING PLATE | 100* |
| C | GREENHECK SP-15 | 0.6 | 120 | 1 | 90 | 1/8" | 1050 | DIRECT DRIVE | CEILING MOUNTED FAN | 20* |
| D | GREENHECK 9P-25 | 1.5 | 120 | 1 | 216 | 1/8" | 1050 | DIRECT DRIVE | CEILING MOUNTED FAN | 25* |
| E | GREENHECK SP-27 | 2.5 | 120 | 1 | 241 | 1/8" | 1550 | DIRECT DRIVE | CEILING MOUNTED FAN | 25* |

NOTES: 1. ALL FANS COMPLETE WITH BACKDRAFT DAMPER AND BIRDSCREEN.
 2. INTERLOCK ALL FANS WITH EMS.
 3. CEILING MOUNTED FANS COMPLETE WITH FULL SIZE DISCHARGE TRAY ROOF AND ROOF CAP.

GRILLE SCHEDULE

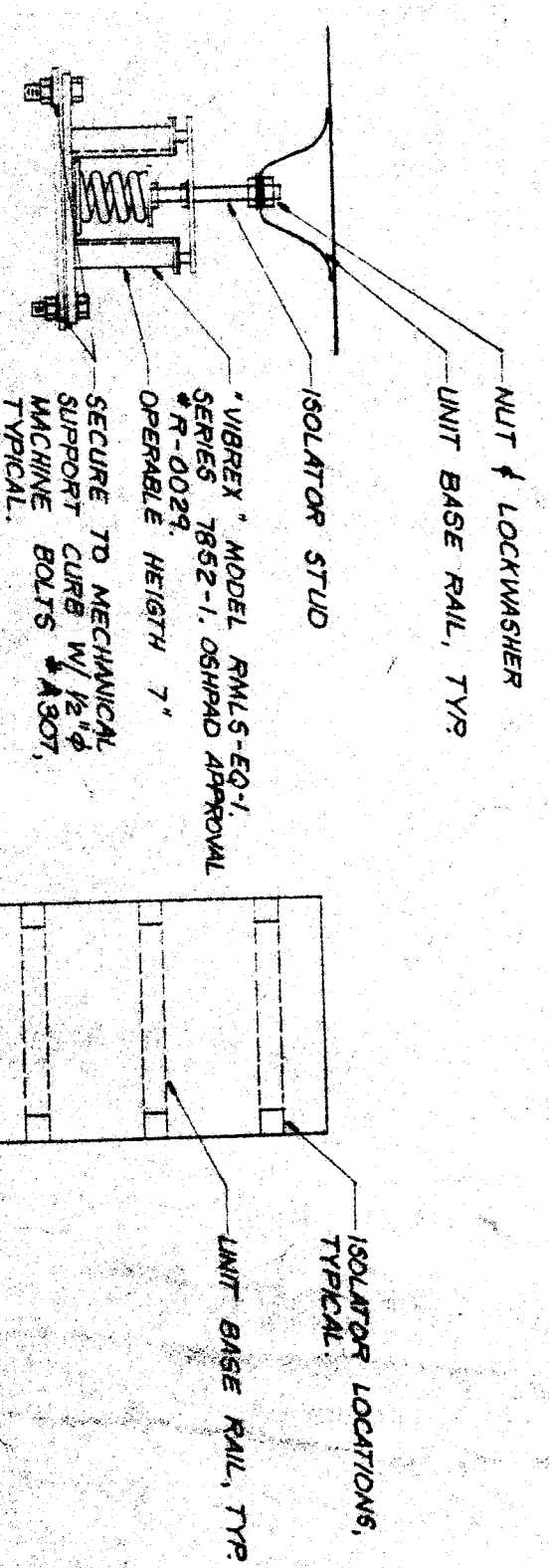
| MARK | DUTY | DESCRIPTION |
|------|---------------------------|---|
| A | CEILING SUPPLY | BARB-AIR 5/8"X3" LOUVER FACE SURFACE MOUNT DIFFUSER, BLACK INTERIOR OGD, #7 FINISH. |
| B | CEILING SUPPLY | BARB-AIR 5/8"X3" PERFORATED FACE LAY-IN DIFFUSER, BLACK INTERIOR OGD, #7 FINISH. |
| C | CEILING SUPPLY | BARB-AIR 5/8"X3" PERFORATED FACE SURFACE MOUNT DIFFUSER, BLACK INTERIOR OGD, #7 FINISH. |
| D | CEILING RETURN EXHAUST | BARB-AIR 5/8"X3" ALUMINUM EGGRATE SURFACE MOUNT RETURN, BLACK INTERIOR OGD, #7 FINISH. |
| E | CEILING RETURN EXHAUST | BARB-AIR 5/8"X3" ALUMINUM EGGRATE SURFACE MOUNT RETURN, BLACK INTERIOR OGD, #7 FINISH. |
| F | WALL EXHAUST | BARB-AIR 5/8"X3" GALV STEEL REMOVABLE CORE AND #7 FINISH, FURNISH WITHOUT INDENTS. |
| G | OUTDOOR AIR INTAKE LOUVER | WONDER-METAL MODEL L-445-F GALV STEEL, W/EXTERIOR MOUNTING FLANGE AND 1/4" MESH BIRDSCREEN, PROVIDE BAKED ENAMEL SUBMIT MANUFACTURER COLOR CHART. |
| H | EXHAUST LOUVER | WONDER-METAL MODEL L-245-F GALV STEEL, W/EXTERIOR MOUNTING FLANGE AND 1/4" MESH BIRDSCREEN, PROVIDE BAKED ENAMEL FINISH, COLOR TO MATCH BUILDING EXTERIOR. PROVIDE SHOP FAB 3/4" M SLERVE WHEN INCORP ORATING WITH BACKDRAFT DAMPER AS SHOWN IN THE DRAWINGS. |
| J | WALL SUPPLY | BARB-AIR 5/8"X3" GALV WALL SUPPLY DIFFUSER OGD, #7 FINISH. |

AIR CONDITIONING EQUIPMENT SCHEDULE

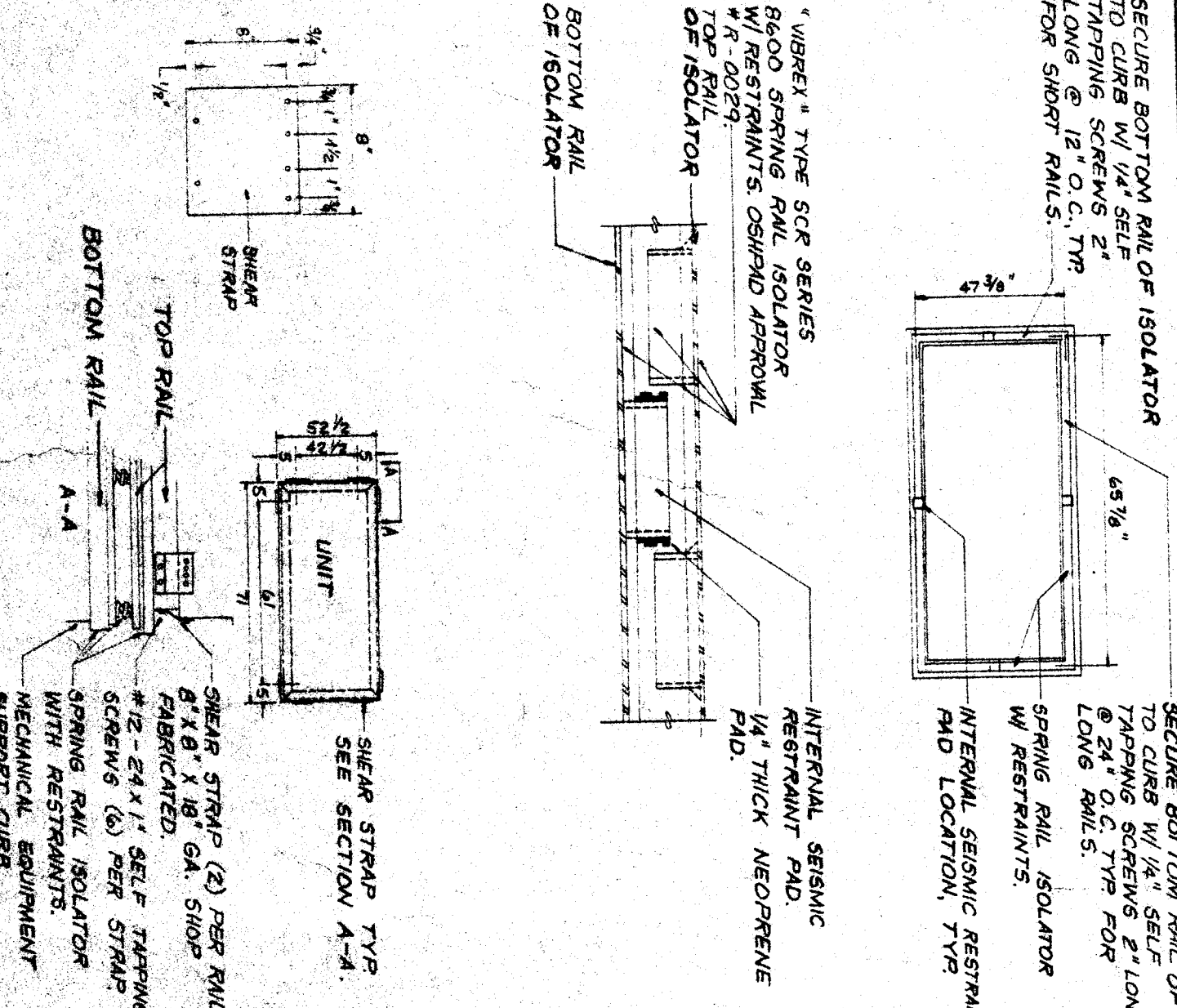
| MARK | DUTY | HP | VOLTS | ELECTRICAL | WT |
|------|----------------------|-------|-------|------------|--------|
| 1 | AIR COOLED CHILLER | 440 | 120 | 1 | 4800* |
| 2 | ICE STORAGE TANK | 241 | 120 | 1 | 17000* |
| 3 | BOILER | 120 | 120 | 1 | 700* |
| 4 | SYSTEM PUMP | 440 | 120 | 1 | 325* |
| 5 | CHILLER PUMP | 440 | 120 | 1 | 200* |
| 6 | ICE MELTER PUMP | 440 | 120 | 1 | 175* |
| 7 | BOILER PUMP | 440 | 120 | 1 | 100* |
| 8 | UNIT VENTILATOR | 120 | 120 | 1 | 700* |
| 9 | UNIT VENTILATOR | 120 | 120 | 1 | 650* |
| 10 | HEATING-COOLING UNIT | 15.8 | 460 | 3 | 750* |
| 11 | HEATING-COOLING UNIT | 11.0 | 460 | 3 | 675* |
| 12 | HEATING-COOLING UNIT | 15.5 | 208 | 1 | 400* |
| 13 | FAN COIL | 1/4 | 120 | 1 | 390* |
| 14 | HEATING-COOLING UNIT | 1/5.5 | 460 | 3 | 800* |

NOTES: 1. ALL ROOF MOUNTED MECHANICAL EQUIPMENT TO BE PROVIDED WITH SPRING ISOLATORS W/SEISMIC RESTRAINTS.
 2. PROVIDE SIZED FABRICATED CURB FOR ALL ROOF MOUNTED MECHANICAL EQUIPMENT BY SPEC. SECTION 18800.
 3. SEE DETAILS ON SHEET S-1.

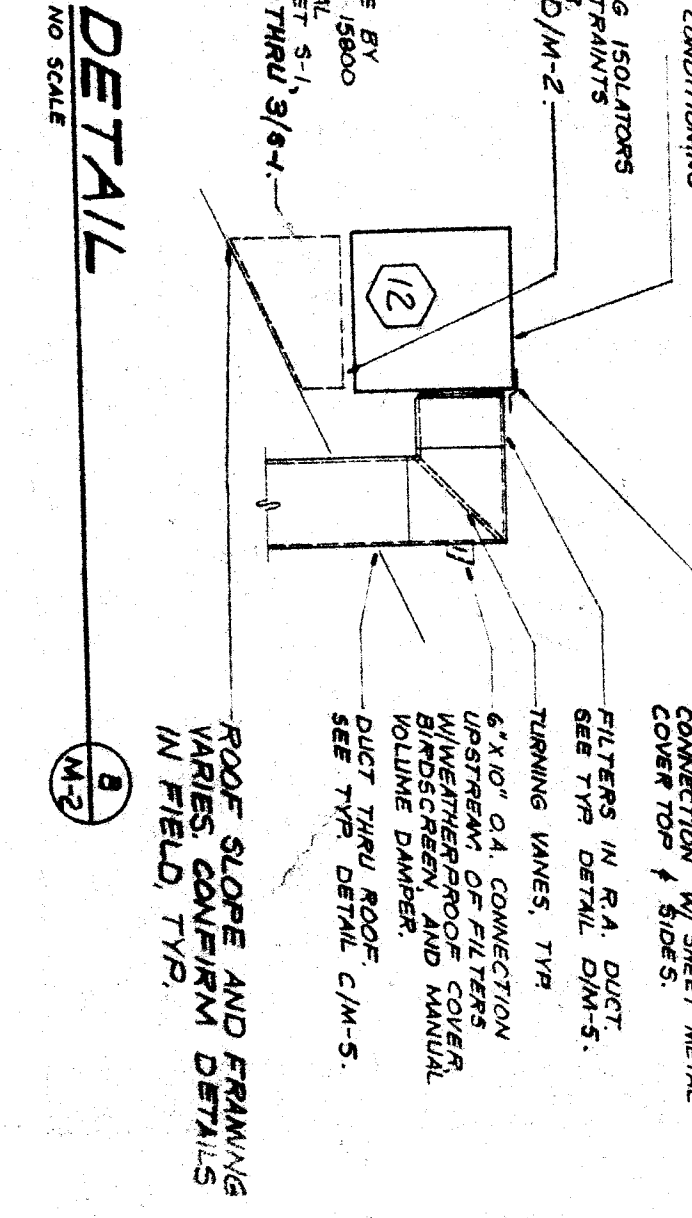
DETAIL



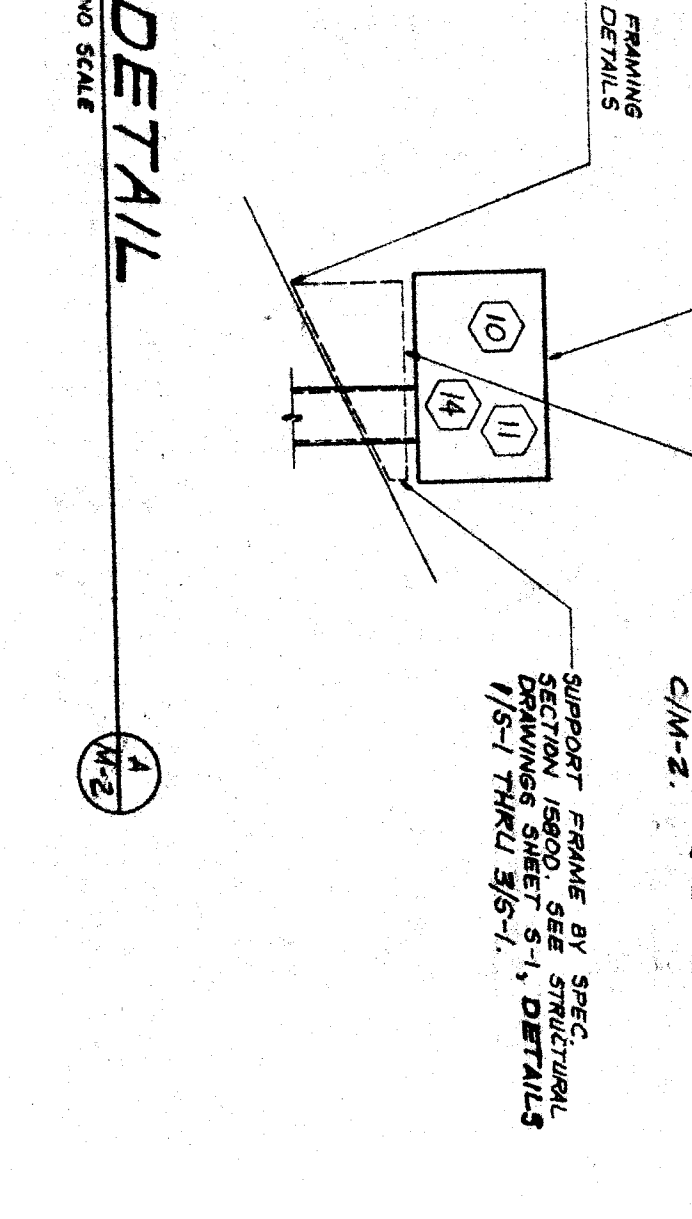
DETAIL



DETAIL



DETAIL



IDENTIFICATION STAMP
 Department of General Services
 Office of the Chief Architect
 453155 0
 1/1/14

M-2

APPROVED
 DATE 9-3-21
 ISSUED FOR BIDDING

KEY PLAN
 MECH. EQUIP. ROOM
 R1, R2, R3, R4, R5, R6

BAKERSFIELD CITY SCHOOL DISTRICT
 BOARD OF EDUCATION

FREMONT ELEMENTARY SCHOOL MODERNIZATION

BAKERSFIELD CITY SCHOOL DISTRICT
 JOHN FRANK MITCHELL, INC.
 CONSULTING MECHANICAL ENGINEERS
 441 WEST GERRARD, SUITE #1
 BAKERSFIELD, CALIFORNIA, 93312
 807.2

RENPRO RUSSELL & ASSOCIATES
 ARCHITECTS • ENGINEERS • INTERIOR DESIGNERS