

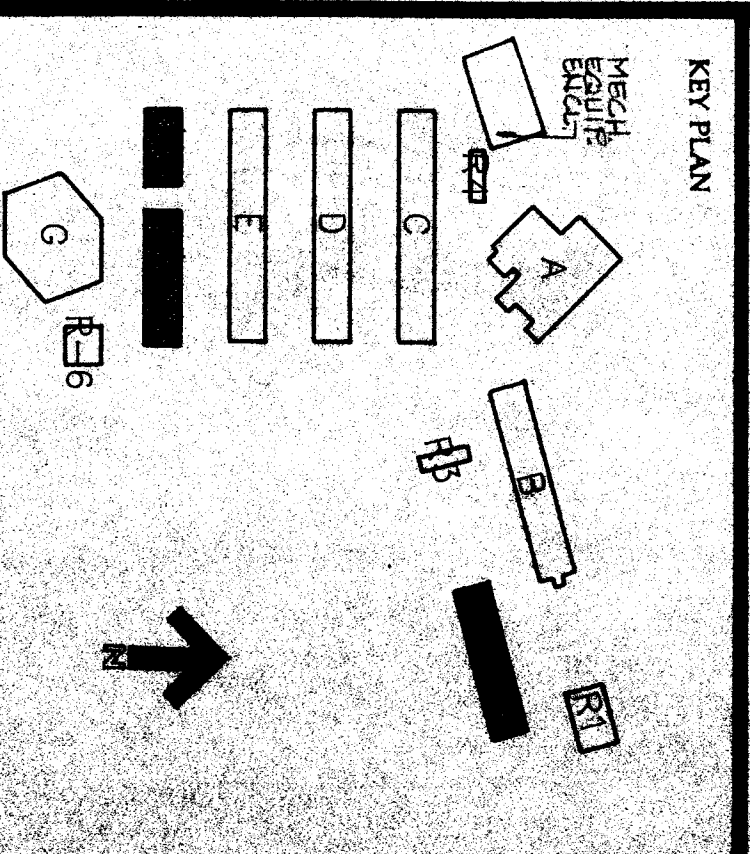
Donald W. Renfro AIA
 Mark E. Russell AIA
 C 5283
 C 12726

4400 Stockton Highway, Suite 204, Sacramento, California 95820 (916) 337-7974

CONSULTANTS
 EUGENIE WU
 CONSULTING ELECTRICAL ENGINEER
 201 N. WALTON AVENUE, FRESNO, CALIF.
 (TELEPHONE 1807-24-988)

**BAKERSFIELD CITY SCHOOL DISTRICT
 FREMONT ELEMENTARY SCHOOL
 MODERNIZATION**

THE ABOVE DIMENSIONS AND SPECIFICATIONS AND SHALL BE THE BASIS FOR THE CONTRACT. THE CONTRACTOR SHALL BE RESPONSIBLE FOR OBTAINING ALL NECESSARY PERMITS AND APPROVALS FROM THE CITY OF BAKERSFIELD AND THE CALIFORNIA DEPARTMENT OF EDUCATION. THE CONTRACTOR SHALL BE RESPONSIBLE FOR OBTAINING ALL NECESSARY PERMITS AND APPROVALS FROM THE CITY OF BAKERSFIELD AND THE CALIFORNIA DEPARTMENT OF EDUCATION. THE CONTRACTOR SHALL BE RESPONSIBLE FOR OBTAINING ALL NECESSARY PERMITS AND APPROVALS FROM THE CITY OF BAKERSFIELD AND THE CALIFORNIA DEPARTMENT OF EDUCATION.



DATE: APPROVED: BAKERSFIELD CITY SCHOOL DISTRICT BOARD OF EDUCATION

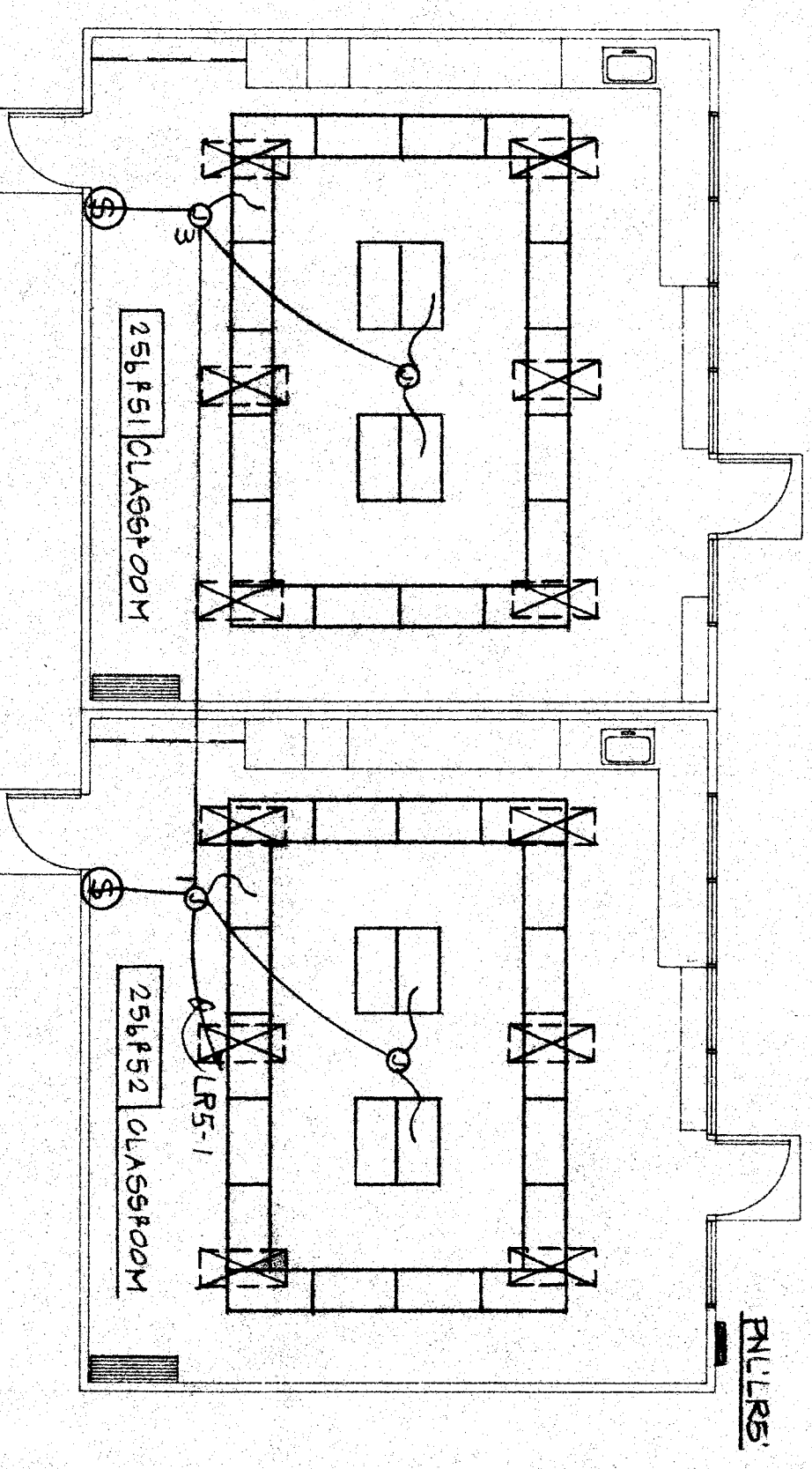
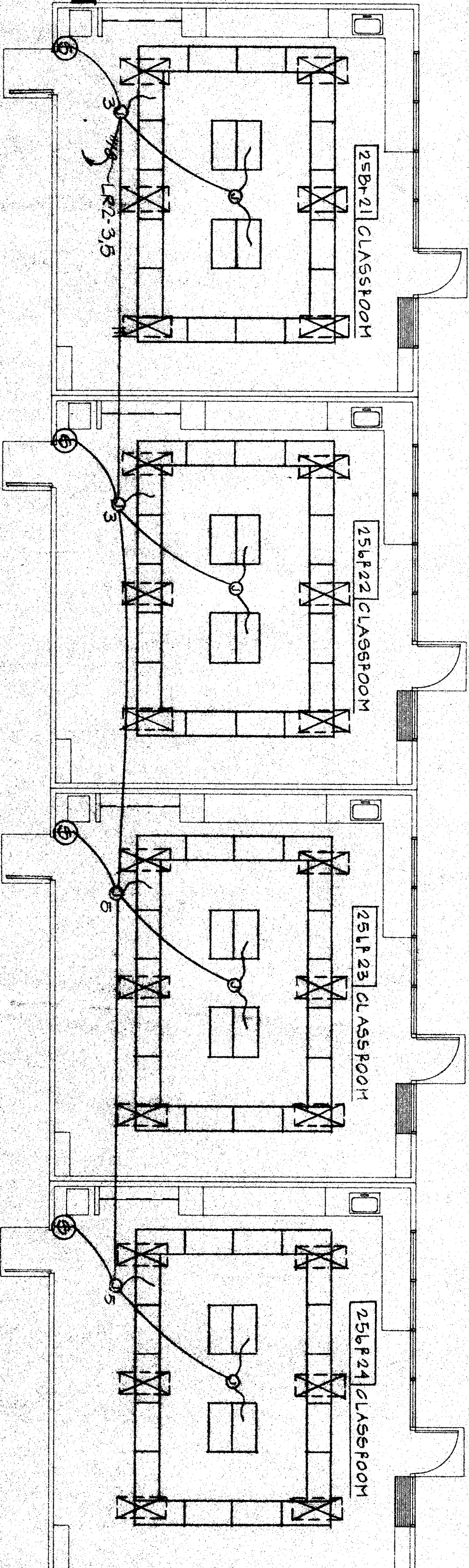
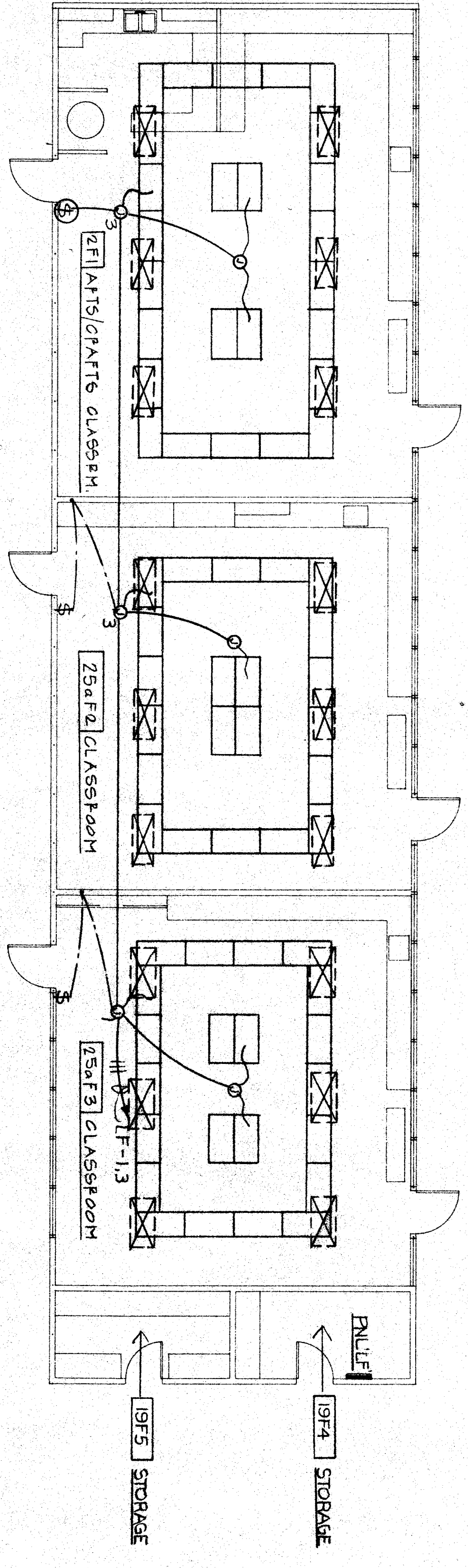
DATE	APPROVED	REVISIONS
03-31	ISSUED FOR BIDDING	

SHEET TITLE: FLOOR PLANS BUILDINGS F-R-5

APPROVED/ARCHITECT: [Signature]
 CHECKED: E.W.
 DRAWN BY: G.K.
 PROJECT NO.: 82-0000
 SHEET NUMBER: E-4

ELECT. PANEL-LF 277/480V 3Ø 4W

CIRC. BREAKER NO.	AMP POLE	REMARKS	SURF. WATT.		
			A	B	C
1	20	1 LIGHTING	1500		
2	50	3 SUBFEED PNL. LRS	3170		
3	20	1 LIGHTING		3170	
4	20	1 SPACE			3170
5	20	1 SPACE			3170
6	20	1 SPACE			3170
7	20	1 SPACE			3170
8	20	1 SPACE			3170
9	20	1 SPACE			3170
10	20	1 SPACE			3170
11	20	1 SPACE			3170
12	20	1 SPACE			3170
TOTAL WATT:			4750	3170	3170
TOTAL CONNECTED LOAD: 8KW					
MAINS: 100 A. CIRC. BRKR.					
FEEDER: 1" C-4*4 (CU THW)					



ELECT. PANEL-LR2 277/480V 3Ø 4W

CIRC. BREAKER NO.	AMP POLE	REMARKS	SURF. WATT.		
			A	B	C
1	20	1 SPACE			3170
2	20	1 LIGHTING		3170	
3	20	1 LIGHTING		3170	
4	20	1 SPACE			3170
5	20	1 SPACE			3170
6	20	1 SPACE			3170
7	20	1 SPACE			3170
8	20	1 SPACE			3170
9	20	1 SPACE			3170
10	20	1 SPACE			3170
11	20	1 SPACE			3170
12	20	1 SPACE			3170
TOTAL WATT:			3170	3170	3170
TOTAL CONNECTED LOAD: 6KW					
MAINS: 50A CIRC. BRKR.					
FEEDER: 1" C-4*4 (CU THW)					

ELECT. PANEL-LR5 277/480V 3Ø 4W

CIRC. BREAKER NO.	AMP POLE	REMARKS	SURF. WATT.		
			A	B	C
1	20	1 LIGHTING	3170		
2	20	1 SPACE			3170
3	20	1 SPACE			3170
4	20	1 SPACE			3170
5	20	1 SPACE			3170
6	20	1 SPACE			3170
7	20	1 SPACE			3170
8	20	1 SPACE			3170
9	20	1 SPACE			3170
10	20	1 SPACE			3170
11	20	1 SPACE			3170
12	20	1 SPACE			3170
TOTAL WATT:			3170		
TOTAL CONNECTED LOAD: 3kW					
MAINS: 50A CIRC. BRKR.					
FEEDER: 1" C-4*4 (CU THW)					

IDENTIFICATION LIST:
 Department of General Services
 Office of the State Architect
 1515 13th Street
 SACRAMENTO, CALIF. 95833
 03/31/83
 Statewide Safety Section
 M/P/CA

NOTE
 SEE SHEET E-2 FOR LIGHT
 FIXTURE TYPE.