

PROJECT
**BAKERSFIELD CITY SCHOOL DISTRICT
FREMONT ELEMENTARY SCHOOL
MODERNIZATION**

Renfro-Russell & Associates, Inc.
400 Broadway Highway, Suite 200, Bakersfield, California 93301 (805) 337-9777
CONSULTANTS

Donnell W. Renfro AIA C2888
Mark E. Russell AIA C19285
Carl G. Ethier AIA C7971
K. Brennan Huffman AIA C13681
Kerrieth A. Kellie AIA C17780
Jeffrey P. Kousar AIA C18804
Terry W. Preston AIA C12883
Larry G. Wiegler AIA C12514

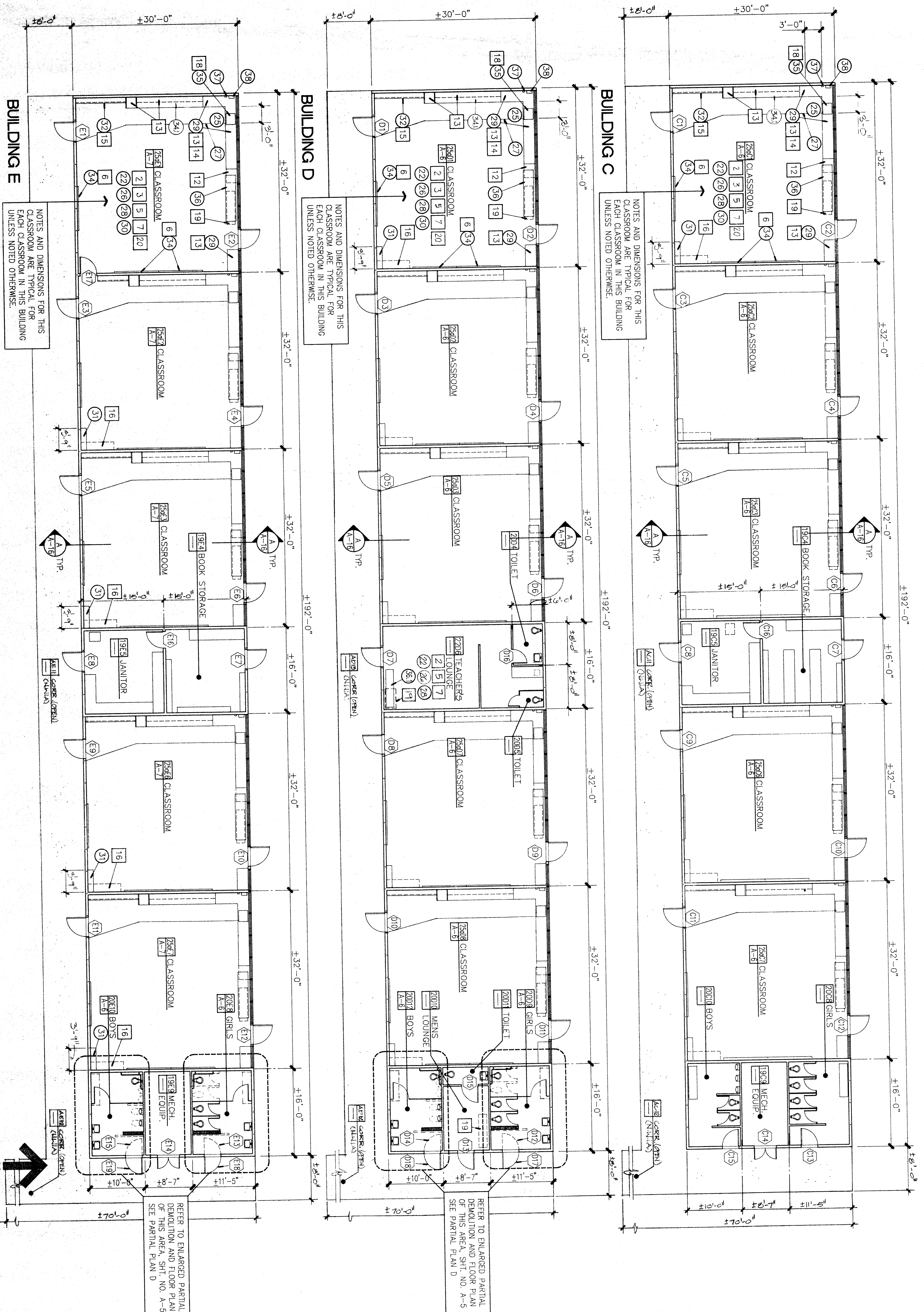
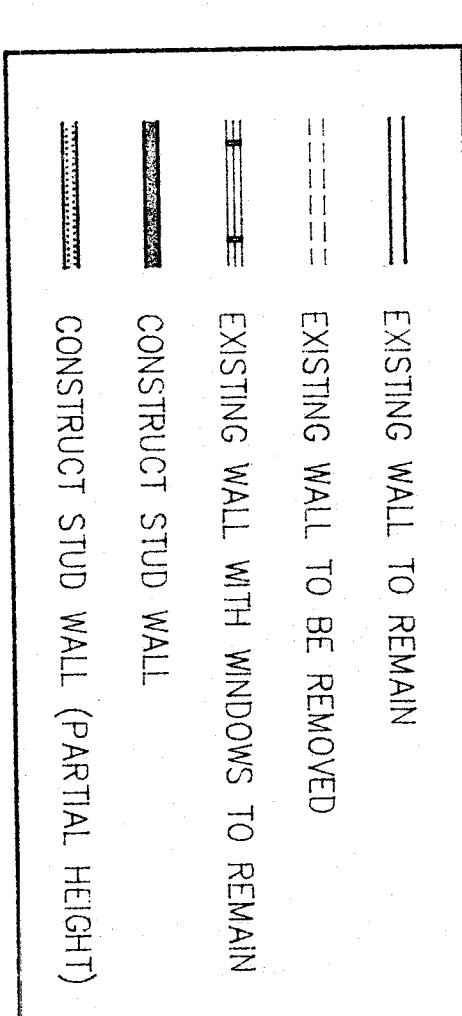
DEMOLITION PLAN NOTES

- REMOVE EXISTING FINISH FLOOR MATERIAL.
- REMOVE EXISTING GYM FLOOR MATERIAL.
- REMOVE EXISTING CERAMIC TILE FLOORING.
- REMOVE EXISTING CERAMIC TILE FLOORING.
- REMOVE EXISTING TRIP, WALLS, & TRICKS IN THIS ROOM THAT WILL INTERFERE WITH THE INSTALLATION OF FINISHES.
- REMOVE EXISTING CHALKBOARDS.
- REMOVE EXISTING TACK BOARDS.
- REMOVE EXISTING WALL.
- REMOVE EXISTING DOOR, HARDWARE AND FRAME.
- REMOVE EXISTING DOOR AND HARDWARE.
- REMOVE PORTION OF EXISTING WALL FOR WINDOW (REFER TO INTERIOR ELEVATION).
- REMOVE PORTION OF EXISTING CABINET.
- REMOVE EXISTING CABINET HARDWARE AND DOORS.
- REMOVE EXISTING COUNTERTOPS AND SPLASHES.
- REMOVE EXISTING SHELF, COAT HOOKS, AND SUPPORTING BRACKETS.
- REMOVE EXISTING BOOKCASE.
- REMOVE EXISTING CABINET.
- REMOVE EXISTING SINK (REFER TO PLUMBING PLANS).
- REMOVE EXISTING UNIT HEATER (REFER TO MECH PLANS) REMOVE EXISTING FAN COIL UNIT (REFER TO MECH PLANS) REMOVE EXISTING SOAP DISPENSERS AND MIRRORS WHERE THEY OCCUR.
- REMOVE EXISTING PAPER ROLL DISPENSER BRACKETS AND RENSJALL IN SHOWER AREA INSTALLED.
- REMOVE EXISTING PAPER ROLL DISPENSER BRACKETS AND RENSJALL IN SHOWER AREA INSTALLED.

FLOOR PLAN NOTES

- ALL NOTES IN THIS COLUMN ARE TO BE USED FOR REMOVAL OF EXISTING MATERIALS. NOTES IN THIS COLUMN WHICH ARE NOT INDICATED ON THE DRAWING SHALL BE DISREGARDED.
- PREPARE SIGHT FOR SURFACE TO ACCEPT FLOORING MATERIAL.
 - PATCH FLOOR WITH MATERIAL AND COLOR TO MATCH EXISTING.
 - PROVIDE AND INSTALL VINYL COMPOSITION TILE.
 - PROVIDE AND INSTALL CARPET.
 - PROVIDE AND INSTALL CARPET EDGE STRIP.
 - REPAIR, PATCH AND PREPARE WALL SURFACE TO ACCEPT FINISH WALL MATERIAL.
 - PROVIDE AND INSTALL LAMINATED PLASTIC OVERBOARD AND FINISH WALL MATERIAL.
 - ALL CABINETS IN THIS ROOM ARE TO BE REMOVED AND REINSTALLED TO INTERIOR ELEVATIONS, OTHERWISE (REFER TO INTERIOR ELEVATIONS).
 - PROVIDE AND INSTALL LAMINATED PLASTIC OVERBOARD AND ADJUSTABLE SHELVES.
 - PROVIDE AND INSTALL SHELF, COAT HOOKS, AND SUPPORTING BRACKETS.
 - PROVIDE AND INSTALL UPPER BOOKCASE.
 - PROVIDE AND INSTALL CHALKBOARD.
 - PROVIDE AND INSTALL MECHANICAL PLANS.
 - REFER TO INTERIOR ELEVATION SHEET FOR MECH PLUMBING PLANS.
 - PROVIDE AND INSTALL UNIT VENTILATOR (REFER TO MECHANICAL PLANS).
 - PROVIDE AND INSTALL FAN COIL UNIT (REFER TO MECHANICAL PLANS).
 - PROVIDE AND INSTALL SOAP DISPENSER, MIRROR AND INSTALL PAPER TOWEL DISPENSER.
 - PROVIDE AND INSTALL PAPER TOWEL DISPENSER, MIRROR AND INSTALL PAPER TOWEL DISPENSER.
 - REFRIGERATOR SPACE

WALL LEGEND



FLOOR PLANS

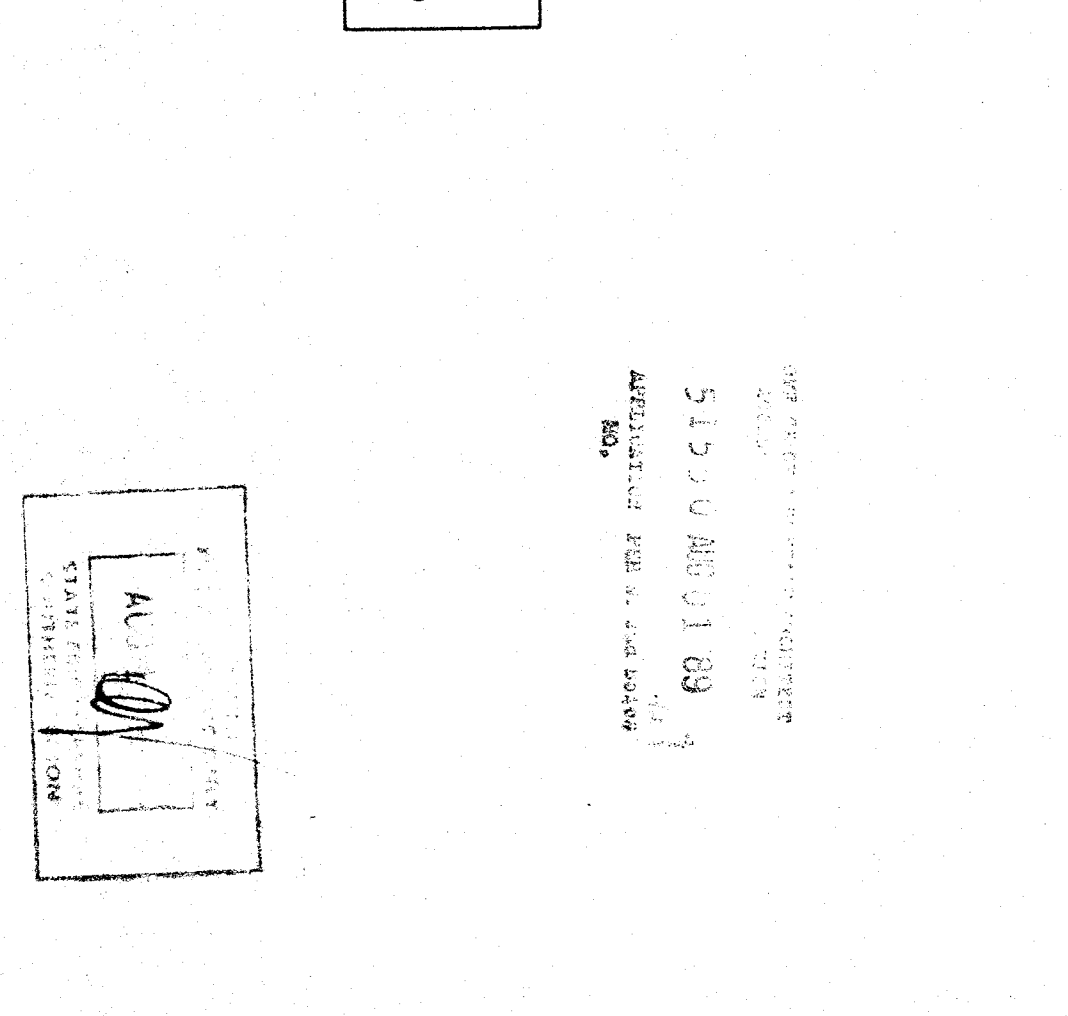
1/8"

DATE ISSUED FOR 9-2-91
DATE 5-12-92
DRAWN BY CDP
CHECKED TWP
APPROVED ARCHITECT
SHEET NUMBER 96216CA229B6
OF 19 SHEETS
A-3

BAKERSFIELD CITY SCHOOL DISTRICT BOARD OF EDUCATION

DATE	APPROVED
9-2-91	BOBING
5-12-92	REVISED

DATE 5-12-92
DRAWN BY CDP
CHECKED TWP
APPROVED ARCHITECT
SHEET NUMBER 96216CA229B6



REFER TO ENLARGED PARTIAL REMOVAL AND FLOOR PLAN OF THIS AREA, SHEET NO. A-5 SEE PARTIAL PLAN D.

REFER TO ENLARGED PARTIAL REMOVAL AND FLOOR PLAN OF THIS AREA, SHEET NO. A-5 SEE PARTIAL PLAN D.

NOTES AND DIMENSIONS FOR THIS CLASSROOM ARE TYPICAL FOR EACH CLASSROOM IN THIS BUILDING UNLESS NOTED OTHERWISE.

NOTES AND DIMENSIONS FOR THIS CLASSROOM ARE TYPICAL FOR EACH CLASSROOM IN THIS BUILDING UNLESS NOTED OTHERWISE.

NOTES AND DIMENSIONS FOR THIS CLASSROOM ARE TYPICAL FOR EACH CLASSROOM IN THIS BUILDING UNLESS NOTED OTHERWISE.