

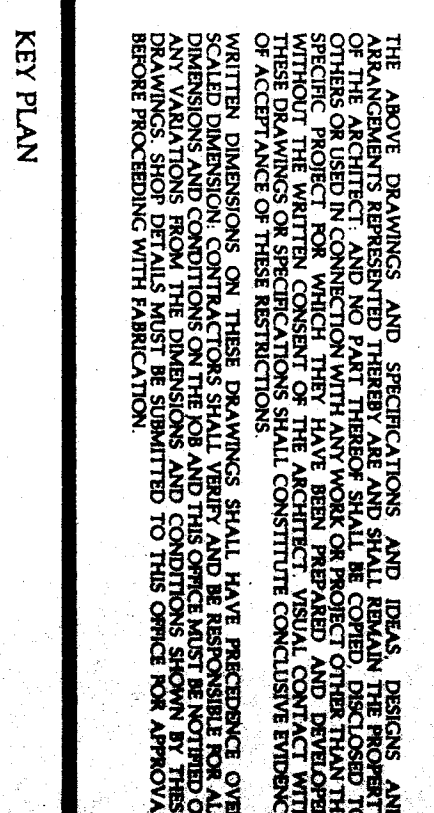
CLASSIFICATION OF SUSPENDED CEILING GRID:
 MANUFACTURER: CHICAGO METALIC CORP.
 MAIN RUNNER: HEAVY DUTY 1870 F.R.
 CLASS: CROSS RUNNER 1854

SYMBOL	DESCRIPTION
	2' X 4' SUSPENDED T-BAR CEILING SYSTEM WITH ACOUSTIC CEILING PANELS
	EXISTING ACOUSTIC TILE CEILING
	GYPSUM BOARD CEILING (SEE ROOM FINISH SCHEDULE)
	1' X 4' FLUORESCENT LIGHT FIXTURE (REFER TO ELECTRICAL LIGHTING PLAN)
	2' X 4' FLUORESCENT LIGHT FIXTURE (REFER TO ELECTRICAL LIGHTING PLAN)
	SURF. MTD. INCANDESCENT LIGHT FIXTURE (REFER TO ELECTRICAL LIGHTING PLAN)
	SUPPLY AIR REGISTER (REFER TO MECHANICAL PLAN)
	RETURN AIR REGISTER (REFER TO MECHANICAL PLAN)
	EXHAUST FAN REGISTER (REFER TO MECHANICAL PLAN)

SYMBOL/LEGEND	DESCRIPTION
	ARROW INDICATES DIRECTION OF SLOPED CEILING FROM LOW TO HIGH
	DEMOLITION NOTES

- REFLECT PLAN NOTES**
- REMOVE EXISTING LIGHT FIXTURES AND STOCKPILE IN DESIGNATED AREA FOR REVIEW BY OWNER FOR SALVAGE.
 - REMOVE EXISTING LAY-IN ACOUSTIC PANELS AND STOCKPILE IN DESIGNATED AREA FOR REVIEW BY OWNER FOR SALVAGE.
 - EXISTING FLURRED-IN ATTIC SPACE.
 - EXISTING PLASTERED CEILING.
 - REPAIR EXISTING DRAPERY TRAKS.
 - EXISTING ACOUSTIC CEILING TILE. REPLACE ANY EXPOSED TILES WHICH ARE CRACKED, DISINTEGRATED OR OTHERWISE DAMAGED. REMOVE AND DISCARD ALL DAMAGED TILES.
 - 2' X 4' LAY-IN ACOUSTICAL PANELS IN SUSPENDED T-BAR GRID. REFER TO DETAIL 1/A-10.
 - REPAIR, CLEAN AND PAINT EXISTING SUSPENDED PANELS. REMOVE AND DISCARD ANY DAMAGED PANELS WHICH HAVE BEEN REMOVED.
 - REPAIR, PATCH AND PREPARE CEILING SURFACE TO ACCEPT FINISH. REPAIR TO MECHANICAL PLAN.
 - COORDINATE PLACEMENT OF CEILING REGISTERS WITH EXISTING CEILING MOUNTED LIGHT FIXTURES. CEILING PANELS.
 - PROVIDE AND INSTALL 5/8" GYPSUM BOARD OVER 2' X 4' FORMING STRIPS AT 24" O.C.

BAKERSFIELD CITY SCHOOL DISTRICT
FREMONT ELEMENTARY SCHOOL
MODERNIZATION



BAKERSFIELD CITY SCHOOL DISTRICT BOARD OF EDUCATION

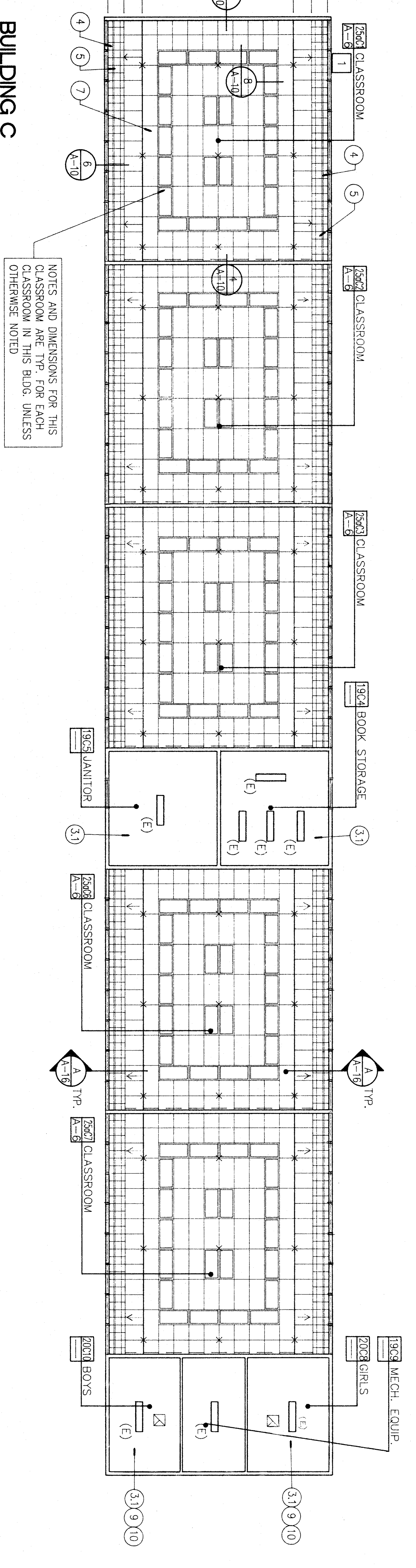
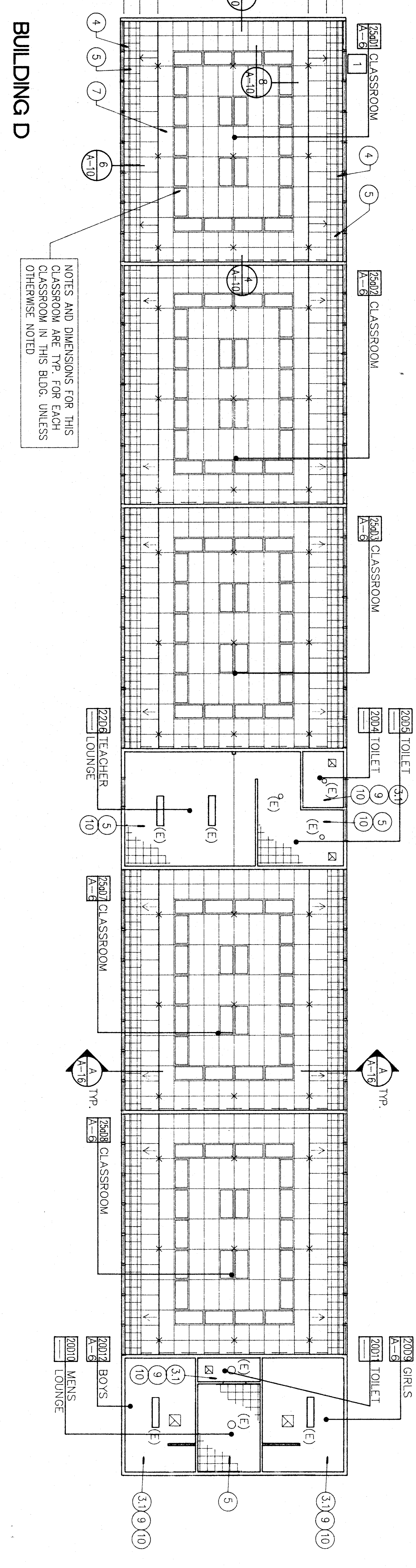
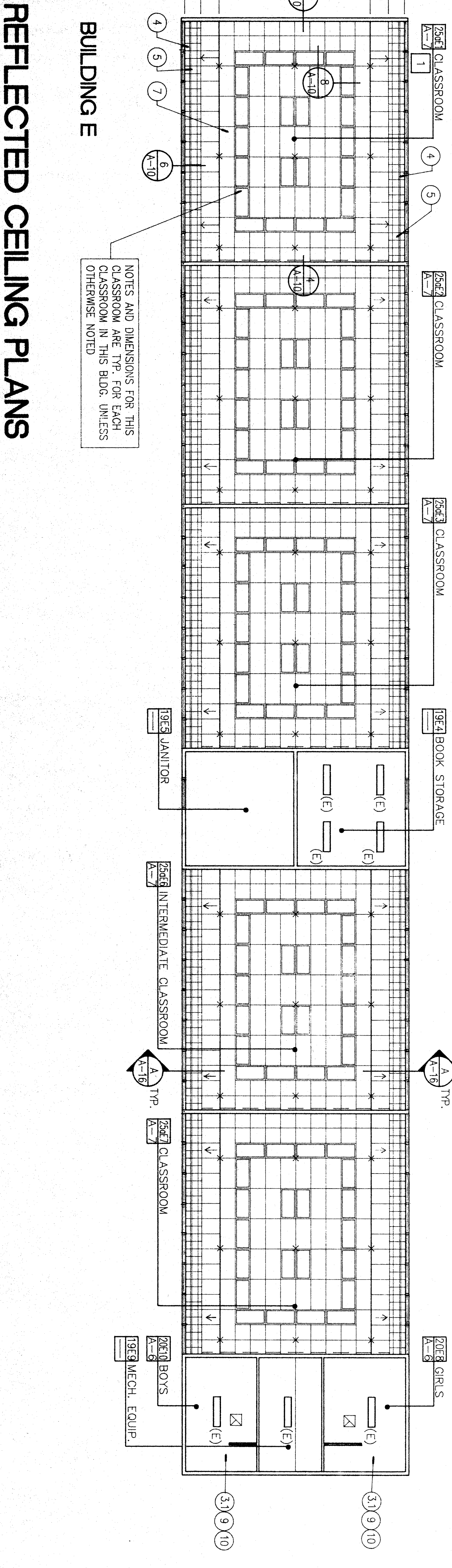
DATE	APPROVED
7-23-91	

DATE	ISSUED FOR
7-23-91	ISSUING

REFLECTED CEILING PLANS
BUILDINGS C, D, E

APPROVED ARCHITECT:
 CHECKED TWP:
 DRAWN BY: CDP/RS/SS
 PROJECT NO: 86-2167A
 SHEET NUMBER: A-11
 OF 19 SHEETS

1/8" N



REFLECTED CEILING PLANS
 CEILING MATERIAL, FINISH, LIGHT FIXTURES AND MECHANICAL REGISTERS SHALL REMAIN AS THEY EXIST UNLESS OTHERWISE NOTED. REFER TO MECHANICAL AND ELECTRICAL DRAWINGS FOR ADDITIONAL REQUIREMENTS.