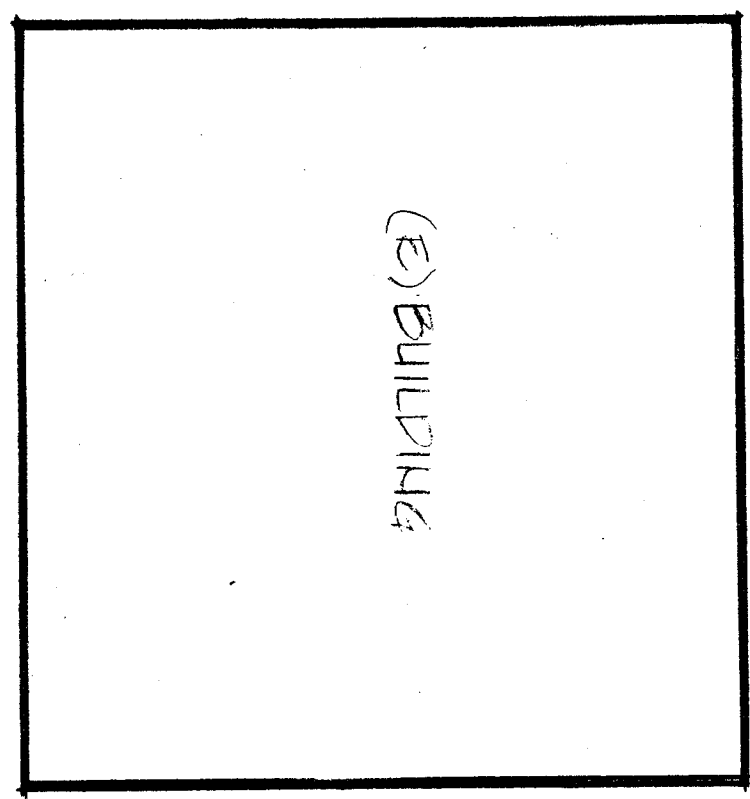


BUILDING 100

BUILDING 300

MATCH LINE SEE SHEET A-2



CLASS ROOM 407 SEE CLASSROOM FOOT FOR WORK

CLASS ROOM 408 SEE CLASSROOM FOOT FOR WORK

CLASS ROOM 409 SEE CLASSROOM FOOT FOR WORK

CLASS ROOM 410 SEE CLASSROOM FOOT FOR WORK

CLASS ROOM 411 SEE CLASSROOM FOOT FOR WORK

CLASS ROOM 412 SEE CLASSROOM FOOT FOR WORK

CLASS ROOM 413 SEE CLASSROOM FOOT FOR WORK

BUILDING 400 FLOOR PLAN

MECHANICAL 407

WORKROOM 408

SEE MECH REMOVE (A) ILC SEE MECH INVESTIGABLE

SEE PARTIAL FLOOR PLAN C FOR ENLARGEMENT OF THIS AREA (SHEET A-2)

SEE PARTIAL FLOOR PLAN D FOR ENLARGEMENT OF THIS AREA (SHEET A-2)

CLASS ROOM 500 SEE CLASSROOM FOOT FOR WORK

CLASS ROOM 501 SEE CLASSROOM FOOT FOR WORK

CLASS ROOM 502 SEE CLASSROOM FOOT FOR WORK

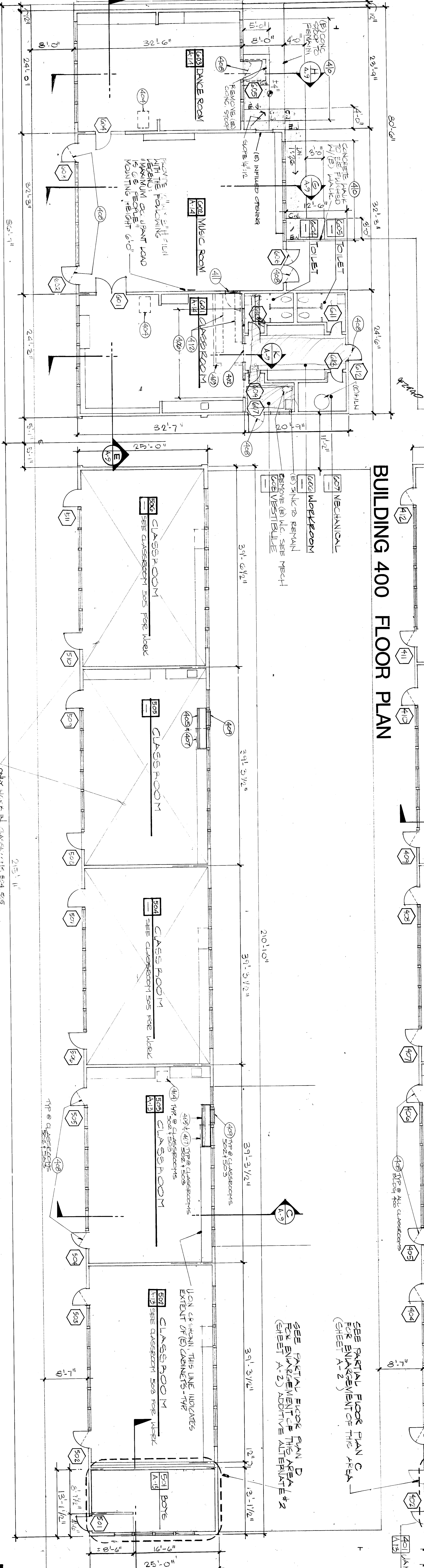
CLASS ROOM 503 SEE CLASSROOM FOOT FOR WORK

CLASS ROOM 504 SEE CLASSROOM FOOT FOR WORK

CLASS ROOM 505 SEE CLASSROOM FOOT FOR WORK

BUILDING 600

BUILDING 500 FLOOR PLAN



ONLY USE SKIN CLASSROOMS 504, 505 AND 506 TO BE REMOVED (E) FLOOR, MOVING CABINET TO FIT UNIT VENTILATOR

GENERAL NOTES:
1. RELOCATE ALL (E) BATTERY POWERED GLASS IN ROOMS WITH (N) T & I CEILING TO A HEIGHT OF 9'-0" ON AS SHOWN BY ARCHITECT.

- 401 REMOVE (E) WALL SHOWN DASHED
- 402 REMOVE (E) PLYWOOD PANEL AT (E) CASED OPENING
- 403 REMOVE (E) WALL SHOWN DASHED
- 404 REMOVE (E) FINISCH, SEE MECHANICAL
- 405 UNIT VENTILATION, SEE MECHANICAL
- 406 REMOVE (E) PLYWOOD AT (E) CLEARSTORY WINDOWS AND REPLACE WITH GLASS
- 407 REMOVE PORTION OF (E) CASE TO INCREASE VERTICAL CLEARANCE TO ACCOMMODATE UNIT VENTILATION. EXISTING NEW AND PANEL. SEE INTERIOR ELEVATION SHEET A-13
- 408 REMOVE (E) DOOR AND HARDWARE. EXISTING FRAME TO REMAIN

- 409 NEW OPENING THRU (E) WALL FOR O.S.A. LOWER. SEE DETAIL 4 SHEET A-6
- 410 NOT USED
- 411 REMOVE (E) DOOR AND FRAME. INSTALL OPENING FOR DETAIL 3B, SHEET A-12.
- 412 REMOVE (E) SHELVES, TURN OVER TO OWNER

Application No. 77/50602

BUILDINGS 400/500/600 FLOOR PLANS 1/8" = 1'-0"

MT. VERNON MODERNIZATION
BAKERSFIELD CITY SCHOOL DISTRICT
2161 POTOMAC AVENUE
BAKERSFIELD, CALIFORNIA 93307

87-126

1 FEB. 89

