

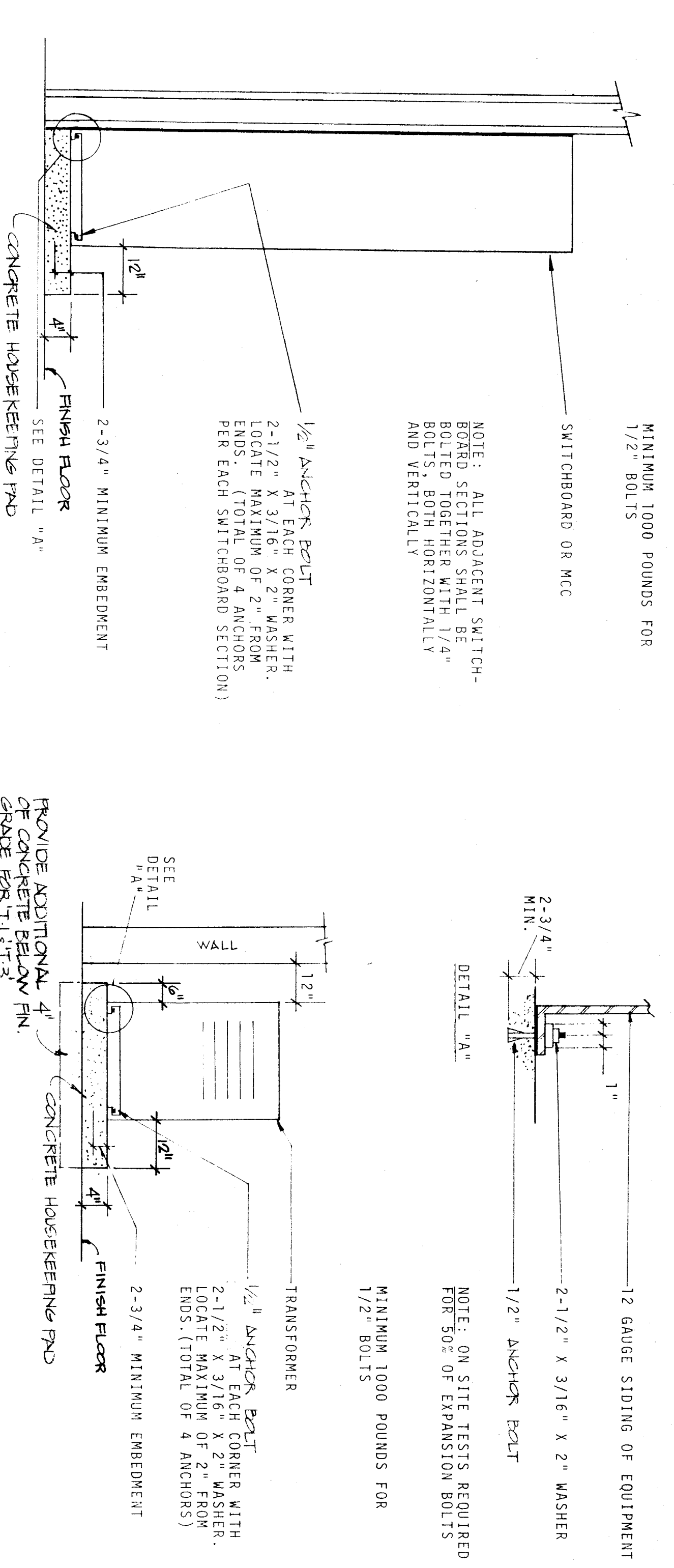
MINIMUM 1000 POUNDS FOR 1/2" BOLTS

12 GAUGE SIDING OF EQUIPMENT

2-1/2" X 3/16" X 2" WASHER

1/2" ANCHOR BOLT

NOTE: ALL ADJACENT SWITCHBOARD SECTIONS SHALL BE 4" BOLTS, BOTH HORIZONTALLY AND VERTICALLY



TRANSFORMER & SWITCHBOARD MTG. DETAIL

(BOLTS MUST HAVE I.C.B.O. APPROVAL)

ALL CONCRETE ANCHOR BOLTS OF THE EXPANSION TYPE (LOADED IN EITHER PULL OR TENSION) MUST BE PROOF TESTED IN TENSION TO MAKE THE ALLOWABLE TENSION LOAD. IF THERE ARE ANY FAILURES THE IMMEDIATELY ADJACENT BOLTS MUST THEN ALSO BE TESTED.

TYPE OF MATERIALS	TYPE OF TEST	BOLT DIAMETER
HARD ROCK CONCRETE	DIRECT PULL-TENSION, LBS.	3/8" 1/2" 5/8" 3/4"
CONCRETE	TORQUE WRENCH-TORQUE, FT. LBS.	1300 2000 2900 4300
	L.T. WT.	25 50 110 150
	TORQUE WRENCH-TORQUE, FT. LBS.	970 1400 1950 2890
		20 35 75 90

SCHOOL'S EQUIPMENT ANCHORAGE

ALL MECHANICAL AND ELECTRICAL EQUIPMENT SHALL BE BRACED OR ANCHORED TO RESIST A HORIZONTAL FORCE ACTING IN ANY DIRECTION USING THE FOLLOWING CRITERIA:

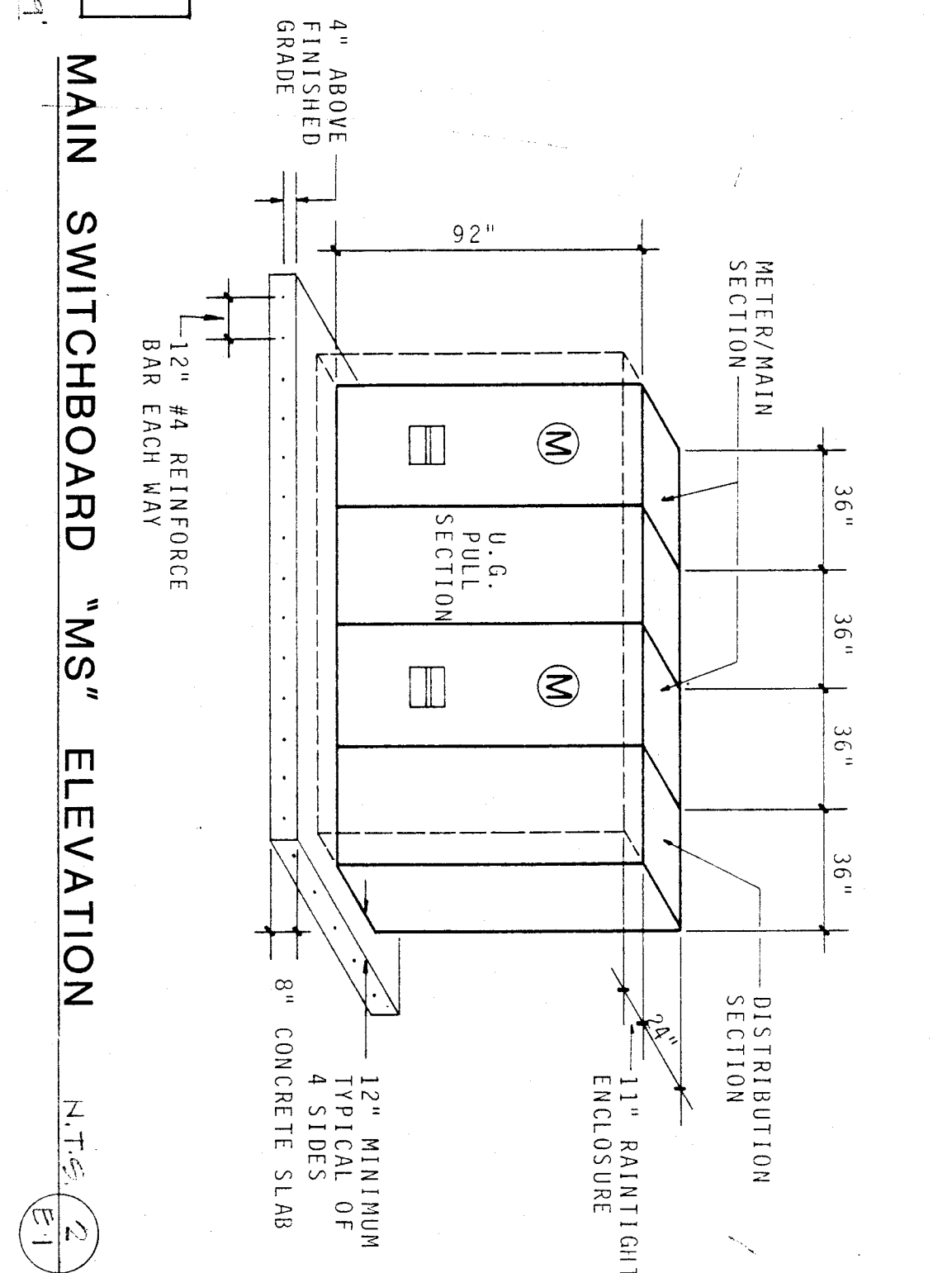
FIXED EQUIPMENT ON GRADE	200 - 500	500 - 1000	1000 - 2000	2000 - 5000	5000 - 10000
PERCENT OF OPERATING WEIGHT	25%	33%	40%	45%	50%
PERCENT OF OPERATING WEIGHT	25%	33%	40%	45%	50%
PERCENT OF OPERATING WEIGHT	25%	33%	40%	45%	50%

FOR FLEXIBLY MOUNTED EQUIPMENT USE 2 X THE ABOVE VALUES.

WHERE ANCHORAGE DETAILS ARE NOT SHOWN ON THE DRAWINGS FOR EQUIPMENT APPROX 500 POUNDS THE FIELD INSTALLATION SHALL BE SUBJECT TO THE APPROVAL OF THE MECHANICAL AND ELECTRICAL ENGINEER AND THE FIELD REPRESENTATIVE OF THE OFFICE OF THE STATE ARCHITECT.

FIRE DETECTION SYSTEM NOTES:

- ALL WIRING IS SHOWN DIAGRAMMATICALLY. CONTRACTOR MAY VARY SEQUENCE OR CIRCUITRY, HOWEVER ALL CIRCUITS SHALL BE CONTINUOUS AND SUPERVISED FROM DETECTOR TO DEVICE OR FROM DETECTOR TO PANEL TO DETECTOR. ALL CIRCUITS SHALL BE BY TERMINAL CONNECTION AT A DEVICE OR AT A PANEL ONLY.
- ALL CONNECTIONS SHALL BE PROPERLY LABELED BY CONDUCTOR AND SHALL HAVE STRAIGHT END CONNECTIONS.
- FA TERMINAL CABINETS SHALL HAVE SUFFICIENT SPACE, TERMINAL BOARDS AND SCHEMATIC DRAWINGS TO ALLOW CONNECTION OF ALL CONDUCTORS SPACED ACCORDING TO HIS PROPOSED CONNECTIONS AT EACH FA TERMINAL CABINET PATTERN TO CORRECTING ANY WORK.
- ALL CONDUCTORS SHALL BE #16 AWG. SOLID COPPER UNLESS OTHERWISE NOTED.
- WRITTEN CERTIFICATION BY THE FIRE ALARM EQUIPMENT DISTRIBUTOR (OR VENDOR OR TRICAL ENGINEER AND THE STATE FIRE MARSHAL) AND THAT THE INSTALLATION INCLUDES TESTING AND OPERATION CONFORMS IN ALL RESPECTS TO THE REQUIREMENTS AS SET FORTH IN TITLE 19 OF THE CALIFORNIA ADMINISTRATIVE CODE AND CAL. P.C. ARTICLE 5-760 OF TITLE 24 OF THE C.A.C. AND SECTION E-609 OF PART 2 OF 7-24 C.A.C.
- INSTALLATION OF FIRE ALARM SYSTEMS SHALL NOT BE CONSIDERED COMPLETE UNTIL THE CONTRACTOR HAS SUBMITTED SHOP DRAWINGS AND MATERIALS TO THE ARCHITECT FOR APPROVAL.

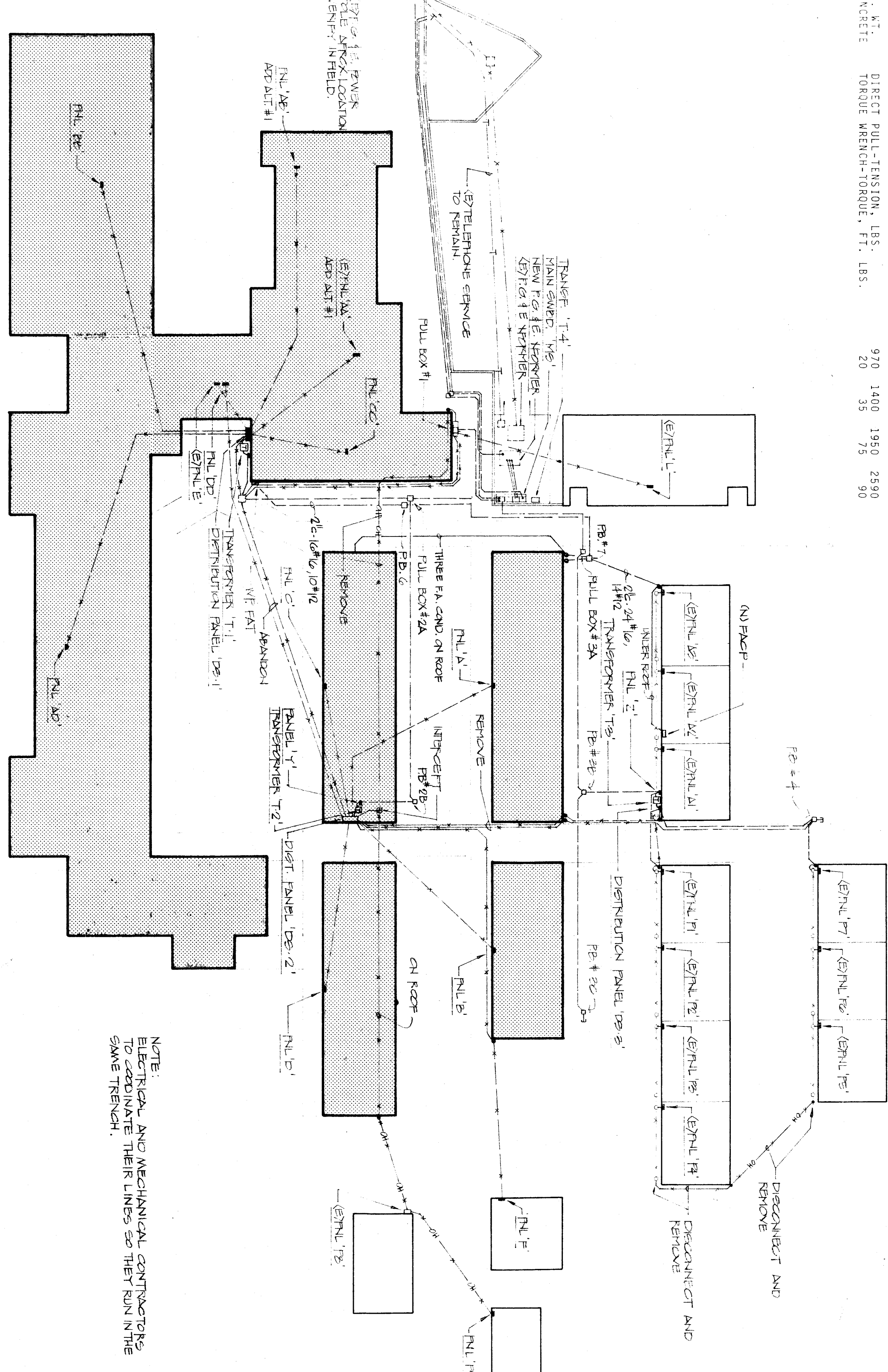


MAIN SWITCHBOARD "MS" ELEVATION

PULL BOX SCHEDULE

PB #1	30-1/4 X 48-1/4"	SEE DETAIL 3/E1
PB #2A	30-1/4 X 48-1/4"	SEE DETAIL 3/E1
PB #2B	30-1/4 X 48-1/4"	SEE DETAIL 3/E1
PB #2C	30-1/4 X 48-1/4"	SEE DETAIL 3/E1
PB #2D	30-1/4 X 48-1/4"	SEE DETAIL 3/E1
PB #3	30-1/4 X 48-1/4"	SEE DETAIL 3/E1
PB #4	30-1/4 X 48-1/4"	SEE DETAIL 3/E1
PB #5	48 X 48"	SEE DETAIL 3/E1
PB #6	STATE #5	SEE DETAIL 3/E1
PB #7	STATE #5	SEE DETAIL 3/E1

HORACE MANN AVENUE

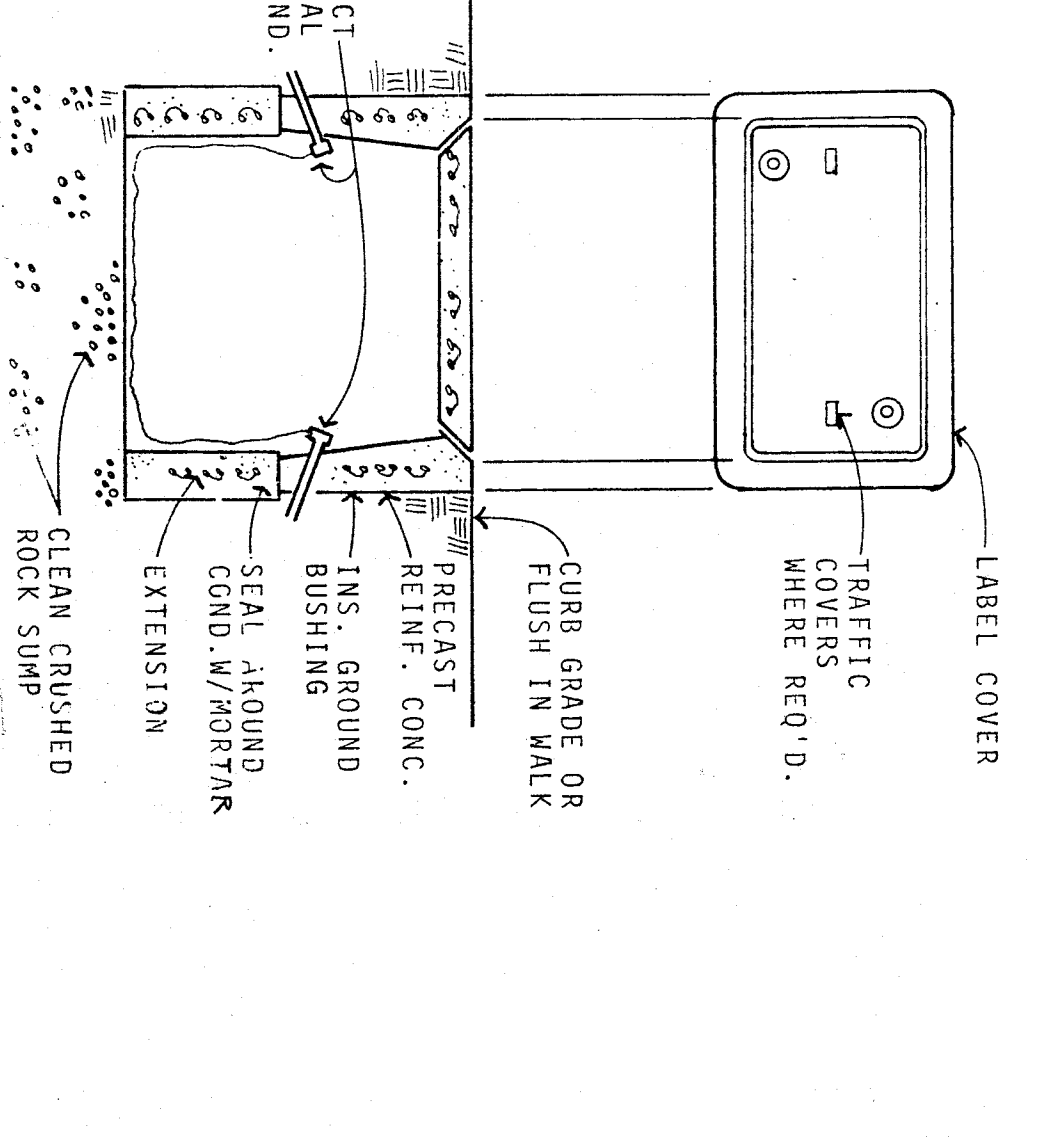


ELECTRICAL SITE PLAN

1"=30.0'

SYMBOL SCHEDULE

SYMBOL	NAME	DESCRIPTION
□	FLUORESCENT FIXTURE	SEE PLAN & FIXTURE SCHEDULE
○	RECESSED FIXTURE	SEE PLAN & FIXTURE SCHEDULE
□	WALL BRACKET FIXTURE	SEE PLAN & FIXTURE SCHEDULE
⊗	EXIT LIGHT FIXTURE	SEE PLAN & FIXTURE SCHEDULE
⊙	PORCELAIN RECEPTACLE	SEE PLAN & FIXTURE SCHEDULE
⊖	LOCAL SWITCH MTD. @ 48" MAX.	20 A - AC QUIET 277V
⊖	3-WAY SWITCH MTD. @ 48" MAX.	20 A - AC QUIET 277V
⊖	SMITH WITH PILOT LITE	NEON IN HANDLE MTD. @ 48" MAX. SWITCH MTD. @ 48" MAX.
⊖	FIXTURE TO LOCAL SWITCH & FIXTURE TYPE AND MATTAGE	SEE FIXTURE SCHEDULE
⊖	DENOTES MECHANICAL EQUIP.	REFER TO MECHANICAL DRAWINGS
⊖	DUPEX CONVENIENCE OUTLET	20 A NEMA GROUNDED MTD. @ 12" MIN.
⊖	FOURPEX CONV. OUTLET	20 A NEMA GROUNDED MTD. @ 12" MIN.
⊖	J-BOX AS REQUIRED	45 BOX & FLUSH PLATE MIN. AS REQUIRED. MINIMUM 1" CONDUIT
⊖	TELEPHONE OUTLET	
⊖	DENOTES EXISTING ITEM	
⊖	DENOTES NEW ITEM	
(N)	SIGNAL RACKWAY	
(N)	WIRING IN CEILING	
(N)	WIRING IN FLOOR OR WALL	
(N)	L.T.G. CONTROL & OUTPUT MODULES	HONEYWELL #EL720 AND #EL700
⊖	SWITCH/PACK	LIGHT-O-MATIC #13-011
⊖	MOTION DETECTOR	LIGHT-O-MATIC #10183
⊖	LIGHT SENSOR	HONEYWELL #EL720
⊖	SURFACE MTD. METAL RACKWAY	SEE PLANS & REF. NOTES
⊖	(E) LIGHTING OUTLET	UNLESS OTHERWISE NOTED
⊖	(E) LIGHT SWITCH	UNLESS OTHERWISE NOTED
⊖	(E) DUPLEX OUTLET	REFER TO MECHANICAL DRAWINGS
⊖	(E) THERMOSTAT	REFER TO MECHANICAL DRAWINGS
⊖	DISCONNECT SWITCH	REFER TO MECHANICAL DRAWINGS
⊖	ELECTRICAL PANEL	REFER TO MECHANICAL DRAWINGS
⊖	TERMINAL CABINET	REFER TO MECHANICAL DRAWINGS
⊖	GROUND FAULT INTERRUPTING	REFER TO MECHANICAL DRAWINGS
⊖	WEATHERPROOF	
⊖	FIRE ALARM FLASHING LITE	PROTONICS #A930 WITH #A8003
⊖	MOUNTED @ +84" REFER TO SHEET	CSFM #7300-067-39
⊖	GROUND FAULT INTERRUPTING	PROTONICS #A930-24/A1320
⊖	MOUNTED @ +84" REFER TO SHEET	CSFM #7135-067-20/7300-067-39
⊖	IONIZATION SMOKE DETECTOR	PROTONICS #D327/0835
⊖	IONIZATION SMOKE DETECTOR	CSFM #7256-067-101
⊖	HEAT DETECTOR, FIXED TEMP. IN ATTIC	PROTONICS #D1200F
⊖	HEAT DETECTOR, RATE OF RISE	CSFM #7270-067-10
⊖	HEAT DETECTOR, RATE OF RISE	PROTONICS SYSTEM 3
⊖	HEAT DETECTOR, RATE OF RISE	CSFM #7165-067-35
⊖	HEAT DETECTOR, RATE OF RISE	PROVIDE SEPARATE 20A CIRCUIT
⊖	HEAT DETECTOR, RATE OF RISE	EXTERIOR ELEV. SIGNS SHALL BE RIGID STEEL
⊖	END OF LINE DEVICE	
⊖	HEAT DETECTOR, RATE OF RISE	PROTONICS #D11358
⊖	HEAT DETECTOR, RATE OF RISE	CSFM #7270-067-10
⊖	HEAT DETECTOR, RATE OF RISE	PROTONICS SYSTEM 3
⊖	HEAT DETECTOR, RATE OF RISE	CSFM #7165-067-35
⊖	HEAT DETECTOR, RATE OF RISE	PROVIDE SEPARATE 20A CIRCUIT
⊖	HEAT DETECTOR, RATE OF RISE	EXTERIOR ELEV. SIGNS SHALL BE RIGID STEEL



PULL BOX DETAIL

ELEC. SITE PLAN, SYMBOL SCHEDULE, GENERAL NOTES & DETAIL

HORACE MANN MODERNIZATION

BAKERSFIELD CITY SCHOOL DISTRICT
2710 NILES AVENUE
BAKERSFIELD, CALIFORNIA 93307

Approved

Professional Engineer Services

DATE: 01/13/21

PROJECT: HORACE MANN MODERNIZATION

LOCATION: 2710 NILES AVENUE, BAKERSFIELD, CA 93307

SCALE: AS SHOWN

Architectural

DATE: 01/13/21

PROJECT: HORACE MANN MODERNIZATION

LOCATION: 2710 NILES AVENUE, BAKERSFIELD, CA 93307

SCALE: AS SHOWN

MECHANICAL

DATE: 01/13/21

PROJECT: HORACE MANN MODERNIZATION

LOCATION: 2710 NILES AVENUE, BAKERSFIELD, CA 93307

SCALE: AS SHOWN

ELECTRICAL

DATE: 01/13/21

PROJECT: HORACE MANN MODERNIZATION

LOCATION: 2710 NILES AVENUE, BAKERSFIELD, CA 93307

SCALE: AS SHOWN

INTERSTATE ENGINEERING, INC.

DATE: 01/13/21

PROJECT: HORACE MANN MODERNIZATION

LOCATION: 2710 NILES AVENUE, BAKERSFIELD, CA 93307

SCALE: AS SHOWN

Copyrighted 1987

DATE: 01/13/21

PROJECT: HORACE MANN MODERNIZATION

LOCATION: 2710 NILES AVENUE, BAKERSFIELD, CA 93307

SCALE: AS SHOWN

Architects Planners

DATE: 01/13/21

PROJECT: HORACE MANN MODERNIZATION

LOCATION: 2710 NILES AVENUE, BAKERSFIELD, CA 93307

SCALE: AS SHOWN

DATE: 01/13/21

PROJECT: HORACE MANN MODERNIZATION

LOCATION: 2710 NILES AVENUE, BAKERSFIELD, CA 93307

SCALE: AS SHOWN

DATE: 01/13/21

PROJECT: HORACE MANN MODERNIZATION

LOCATION: 2710 NILES AVENUE, BAKERSFIELD, CA 93307

SCALE: AS SHOWN

DATE: 01/13/21

PROJECT: HORACE MANN MODERNIZATION

LOCATION: 2710 NILES AVENUE, BAKERSFIELD, CA 93307

SCALE: AS SHOWN

