

- LEGEND**
- TC TOP CURB (ON TOP OF CURB) (DOTTED)
 - F FLOWLINE (DOTTED)
 - E.E. EDGE OF R/W (DOTTED)
 - C.C. CONCRETE CURB (DOTTED)
 - W.V. WASTE VALVE (DOTTED)
 - F.F. FINISH FLOOR (DOTTED)
 - U.G. UNDERGROUND (DOTTED)
 - O.H. OVERHEAD (DOTTED)

NOTE

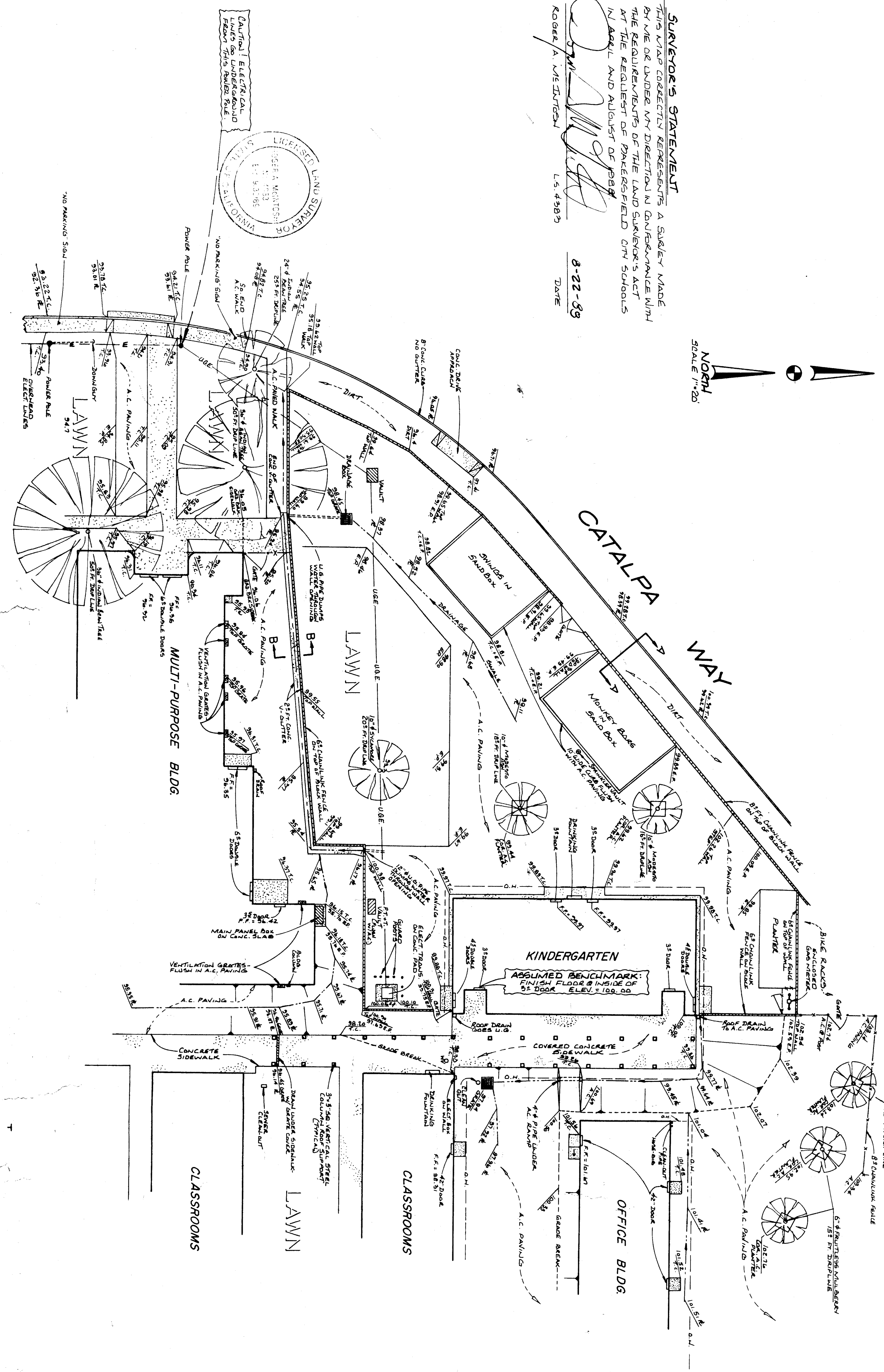
NOT ALL UNDERGROUND FACILITIES OR UTILITIES WERE LOCATED. THE LOCATION OF UNDERGROUND FACILITIES NOT SHOWN OR PROVIDED BY OTHER SOURCES, NOT SHOWN OR PROVIDED BY OTHER SOURCES, NOT SHOWN OR PROVIDED BY OTHER SOURCES, NOT SHOWN OR PROVIDED BY OTHER SOURCES.

ADDITIONAL 750' R/W FOR NEW LOCATION OF CUTLER WARD PLANTED AUGUST 23, 1988. (WEST SIDE OF MULTI-PURPOSE BUILDING)

SURVEYOR'S STATEMENT

THIS WAS CONDUCTED IN ACCORDANCE WITH THE REQUIREMENTS OF THE LAND SURVEYOR'S ACT BY THE REQUIREMENTS OF THE LAND SURVEYOR'S ACT IN ADOPT AND ADOPTED OF 1987

[Signature]
 ROBERT A. WELTON
 L.S. 4983
 8-22-85
 DATE



| | | | | | | | | | | | |
|---|-----------------------|-----------------------|-----------------------|-----------------------|-----------------------|-----------------------|-----------------------|-----------------------|-----------------------|-----------------------|-----------------------|
| <p>Copyright 1987</p> <p>11 589</p> <p>Copyright 1987</p> | <p>Copyright 1987</p> | <p>Copyright 1987</p> | <p>Copyright 1987</p> | <p>Copyright 1987</p> | <p>Copyright 1987</p> | <p>Copyright 1987</p> | <p>Copyright 1987</p> | <p>Copyright 1987</p> | <p>Copyright 1987</p> | <p>Copyright 1987</p> | <p>Copyright 1987</p> |
|---|-----------------------|-----------------------|-----------------------|-----------------------|-----------------------|-----------------------|-----------------------|-----------------------|-----------------------|-----------------------|-----------------------|

C. 3132
 C. 3288
 K.C. 6944
 C. 8021
 C. 8702

DR. ORIN

bfgc Inc.
 architects/planners
 31 South West Lake Blvd. Suite 200
 Bakersfield, California 93307
 (805) 832-8122

EXISTING SITE SURVEY

HORACE MANN MODERNIZATION
 BAKERSFIELD CITY SCHOOL DISTRICT
 2710 NILES AVENUE
 BAKERSFIELD, CALIFORNIA 93307



architects - planners